

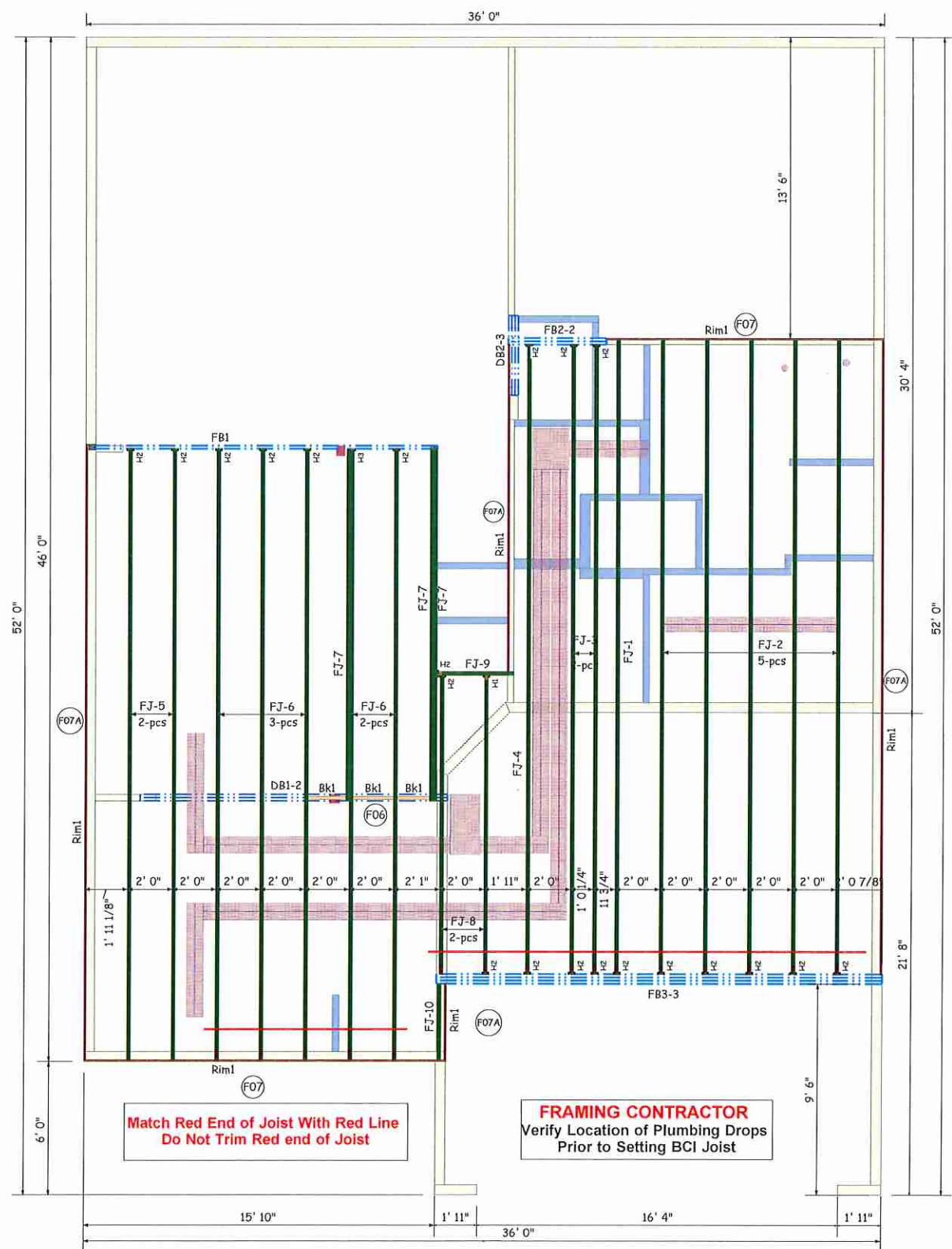
**Boise Cascade**  
 www.bldr.com  
 1135 ROBESON STREET  
 FAYETTEVILLE, NC 28305  
 V (910) 485-1111  
 7601 BOEING DRIVE  
 GREENSBORO, NC 27409  
 V (336) 884-5454  
 3189 NC HIGHWAY 5  
 ABERDEEN NC 28315  
 V (910) 944-2516

This layout and associated materials list has been prepared based on project plans and/or information provided to Builders FirstSource (BFS). It remains the responsibility of the builder, architect, designer, or other responsible persons to review this information to assure that it is appropriate, accurate, complete and complies with applicable building codes.

**GENERAL NOTES:**  
 1.) READ THE INSTALLATION GUIDE BEFORE FRAMING.  
 2.) ALL WALLS SHOWN ARE LOAD BEARING UNLESS NOTED OTHERWISE. WALLS NOT SHOWN ARE CONSIDERED NON-LOAD BEARING.  
 3.) UNLESS STATED OTHERWISE ALL CEILING & ROOF LOADS BRACE DIRECTLY TO LOAD BEARING WALLS SUPPORTED BY FOUNDATION.  
 4.) CONTACT BUILDERS FIRSTSOURCE BEFORE MAKING ANY ALTERATIONS OR ADJUSTMENTS...FAILURE TO DO SO MAY RESULT IN COSTLY REPAIRS.

**H & H HOMES**  
 JORDAN R  
 2ND FLOOR PLACEMENT PLAN  
 Builders FirstSource, Central Carolina Markets  
 DRAWN BY: AJ NAPIER DATE: 4/4/2019  
 SCALE: NTS JOB NUMBER:

MINIMUM DESIGN DATA  
 LIVE LOAD 40 PSF  
 DEAD LOAD 10 PSF  
 TOTAL LOAD 50 PSF  
 DOL = 100%  
 DEFLECTION CRITERIA  
 L/480 (MINIMUM)  
 ARCHITECTURAL PLAN DATE  
 10-10-2015  
 REVISED ARCH. PLAN DATE  
 XX-XX-XX  
**SD032519**  
 Sheet  
 1 of 1



PlotID	Length	Product	Plies	Net Qty
FJ-1	28' 5 3/4"	14" BCI® 4500s-1.8	1	1
FJ-2	28' 5 3/4"	14" BCI® 4500s-1.8	1	5
FJ-3	28' 3 1/4"	14" BCI® 4500s-1.8	1	2
FJ-4	28' 3 1/4"	14" BCI® 4500s-1.8	1	1
FJ-5	27' 5 1/4"	14" BCI® 4500s-1.8	1	2
FJ-6	27' 5 1/4"	14" BCI® 4500s-1.8	1	5
FJ-7	15' 10"	14" BCI® 4500s-1.8	1	3
FJ-8	13' 5"	14" BCI® 4500s-1.8	1	2
FJ-9	3' 6"	14" BCI® 4500s-1.8	1	1
FJ-10	3' 5"	14" BCI® 4500s-1.8	1	1
DB1-2	14' 0"	1-3/4" x 9-1/4" VERSA-LAM® 2.0 3100 SP	2	2
DB2-3	4' 0"	1-3/4" x 9-1/4" VERSA-LAM® 2.0 3100 SP	3	3
FB1	16' 0"	1-3/4" x 14" VERSA-LAM® 2.0 3100 SP	1	1
FB2-2	6' 0"	1-3/4" x 14" VERSA-LAM® 2.0 3100 SP	2	2
FB3-3	22' 0"	1-3/4" x 18" VERSA-LAM® 2.0 3100 SP	3	3
Rim1	12' 0"	1" x 14" BC RIM BOARD OSB	1	9
Bk1	6' 0"	14" BCI® 4500s-1.8	1	1

Hangers			
PlotID	Qty	Manuf	Product
H1	1	Simpson	HU 14
H2	21	Simpson	IUS 1.81/14
H3	1	Simpson	IUS 3.56/14

JORDAN  
 SEAL DATE 03/25/19  
 2nd FLOOR EWP PLACEMENT PLAN

Match Red End of Joist With Red Line  
 Do Not Trim Red end of Joist

**FRAMING CONTRACTOR**  
 Verify Location of Plumbing Drops  
 Prior to Setting BCI Joist