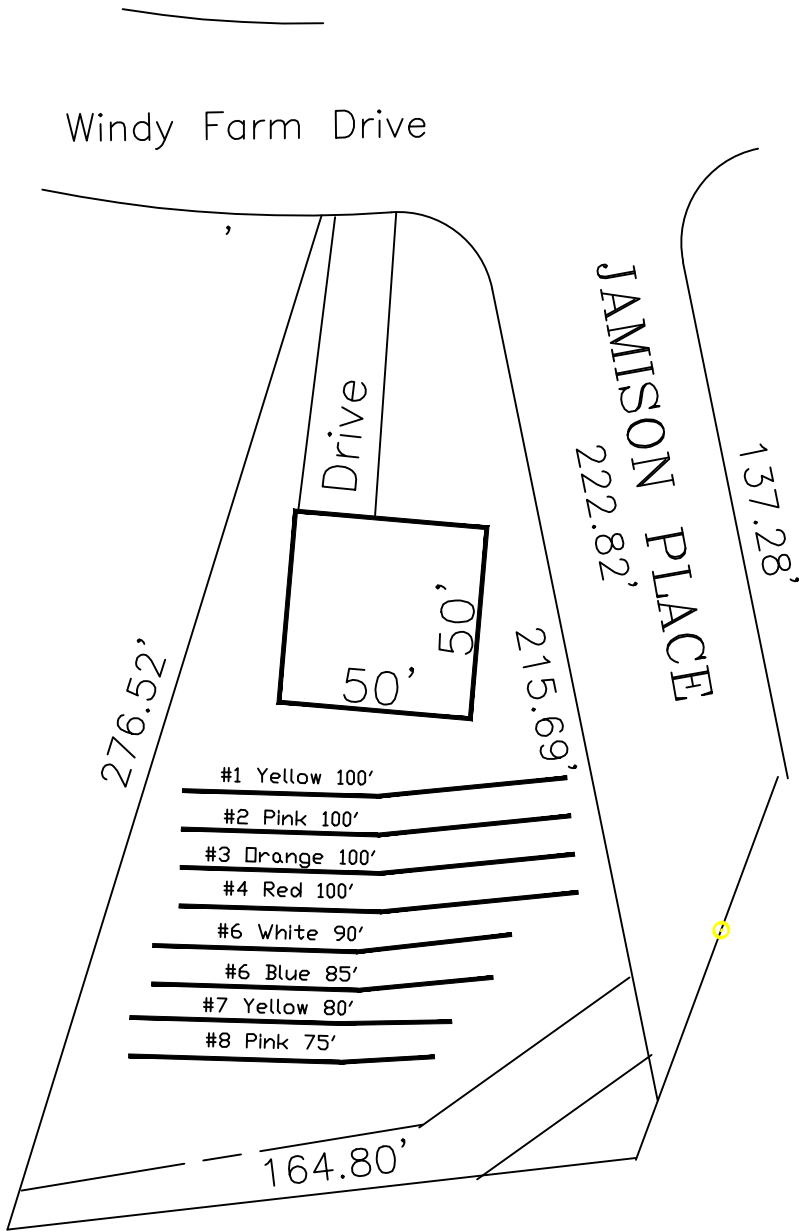


Windy Hill 4-Bedroom Septic Proposal Lot #26



*If plumbing is not sufficient
a separate pump and tank may
be required.

26

26,780 SQ.FT.

System: Pump to D-Box
 Lines: 1-4 (340')
 0.35 LTAR
 24" Trench Bottom
 Accepted Status System
 Repair: Serial Dist.
 Lines: 5-8 (340')
 0.35 LTAR
 24 Trench Bottom
 Accepted Status System

This drawing represents a
preliminary septic plan made prior
to final construction activities.
A revised plan may need to be
reworked at time of permitting.

GRAPHIC SCALE
1" = 50'



Adams
Soil Consulting
919-414-6761
Job #561