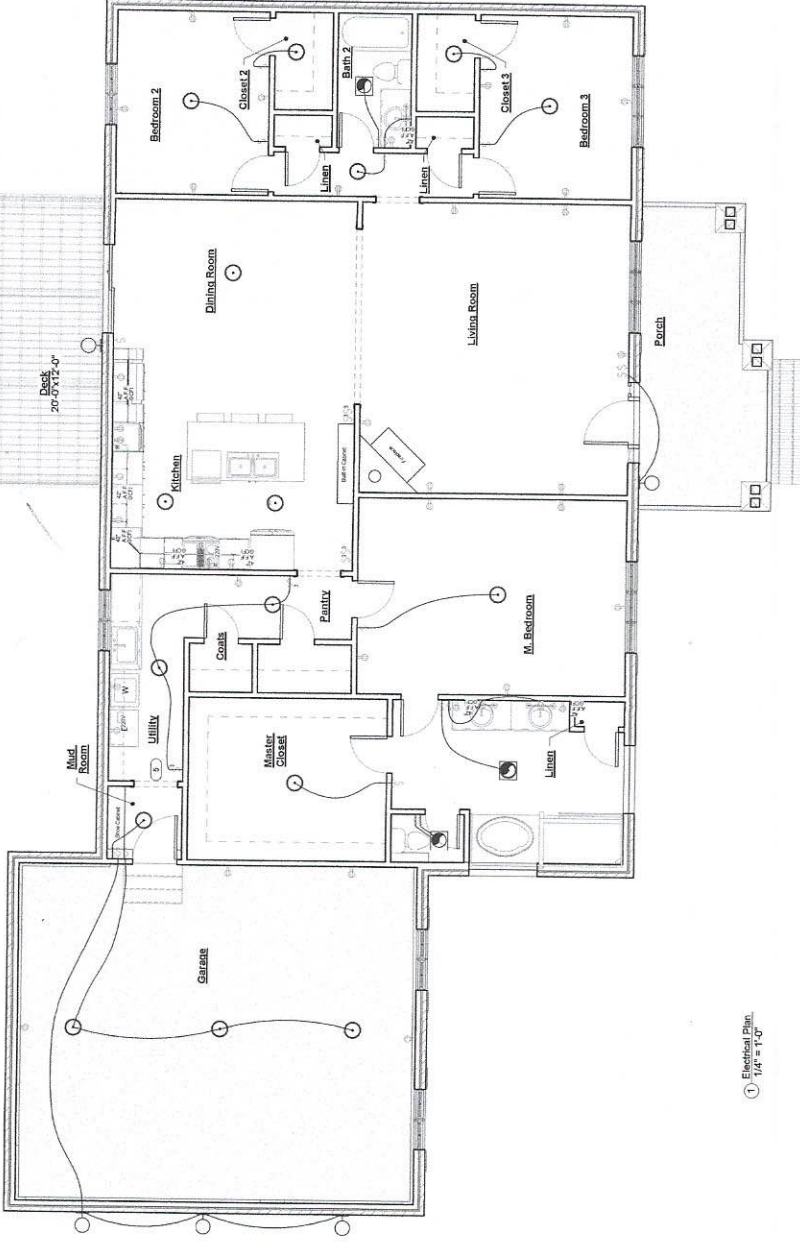


ELECTRICAL LEGEND	
	DUPLEX RECEPTACLE MOUNT AT 15' A.F.F.
	DUPLEX RECEPTACLE GROUND FAULT INTERRUPTER
	DUPLEX RECEPTACLE WEATHERPROOF GROUND FAULT INTERRUPTER
	SINGLE POLE POWER/LIGHTING OVER/UNDER (SINGLE PHASE)
	2-POLE POWER/NEUTRAL (SINGLE PHASE)
	WALL MOUNTED VOICE/DATA OUTLET
	TELEVISION OUTLET
	DISCONNECT
	JUNCTION BOX
	POWER PANEL
	SWITCH, OCCUPANCY SENSOR
	3-WAY SWITCH
	3-WAY DIMMER SWITCH
	LAY-IN/SURFACE MOUNTED LED
	EXISTING LIGHT FIXTURE TO REMAIN
	EMERGENCY LIGHT
	EXTREMEGENCY COMBO
	REMOTE HEAD FOR EXIT LIGHTING



IT IS THE SOLE RESPONSIBILITY OF THE CONTRACTOR TO OBTAIN ALL NECESSARY PERMITS AND APPROVALS FROM THE LOCAL AND STATE AUTHORITIES. THE CONTRACTOR SHALL BE RESPONSIBLE FOR OBTAINING ALL NECESSARY PERMITS AND APPROVALS FROM THE LOCAL AND STATE AUTHORITIES. THE CONTRACTOR SHALL BE RESPONSIBLE FOR OBTAINING ALL NECESSARY PERMITS AND APPROVALS FROM THE LOCAL AND STATE AUTHORITIES.

DESIGNED BY:  
 TRAVIS W. CAMERON  
 RESIDENTIAL DESIGN  
 CONSULTANT  
 NO. CAMERON  
 CAMERON, NC  
 (910) 844-4887

PROPERTY OF TRAVIS W. CAMERON  
 TRAVIS W. CAMERON RESIDENTIAL DESIGN CONSULTANT  
 25351 NC Hwy 24/27  
 CAMERON, NC

25351 NC Hwy 24/27  
 Cameron, NC

Hymbaugh Residence  
 Electrical Plan

SCALE: 1/4" = 1'-0"  
 DATE: 12/7/21  
 Project number: 0222010001  
 Drawn by: Aulford  
 Checked by: Chockley