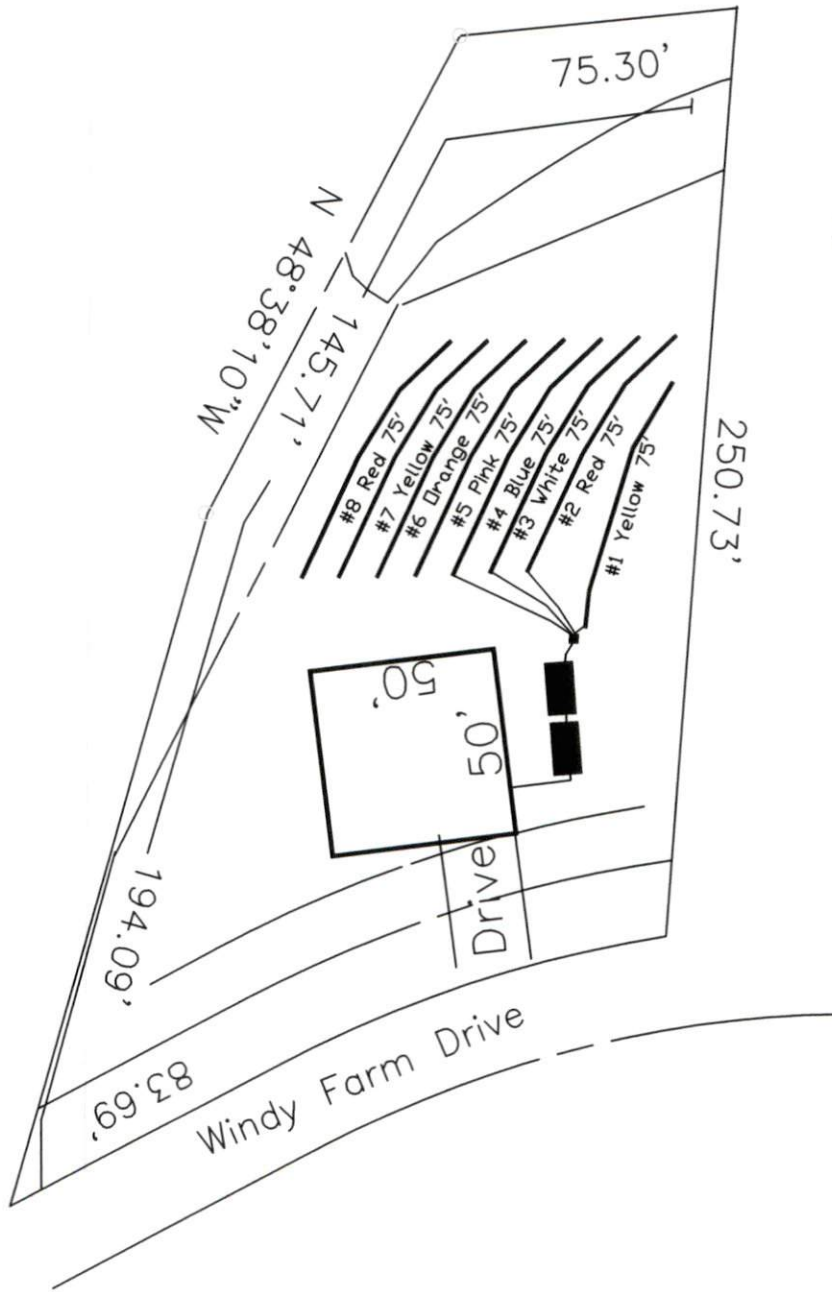


Highland Grove 3-Bedroom Septic Proposal Lot #12



12

34,698 SQ.FT.

This drawing represents a preliminary septic plan made prior to final construction activities. A revised plan may need to be reworked at time of permitting.

System: Pump to D-Box
 Lines: 1-4 (300')
 0.35 LTAR
 24' Trench Bottom
 Accepted Status System
 Repair: Pump to D-Box.
 Lines: 5-8 (300')
 0.35 LTAR
 24' Trench Bottom
 Accepted Status System

GRAPHIC SCALE
1" = 50'



Adams
Soil Consulting
919-414-6761
Job #561