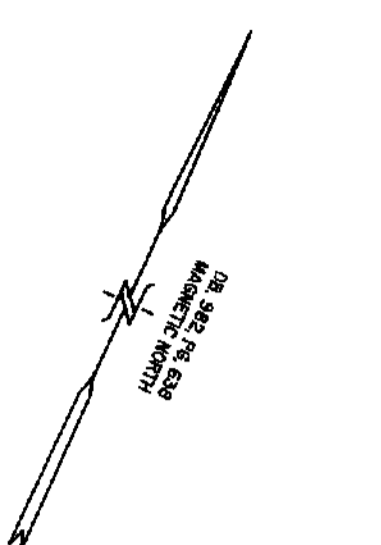


HC# F slide 367-B

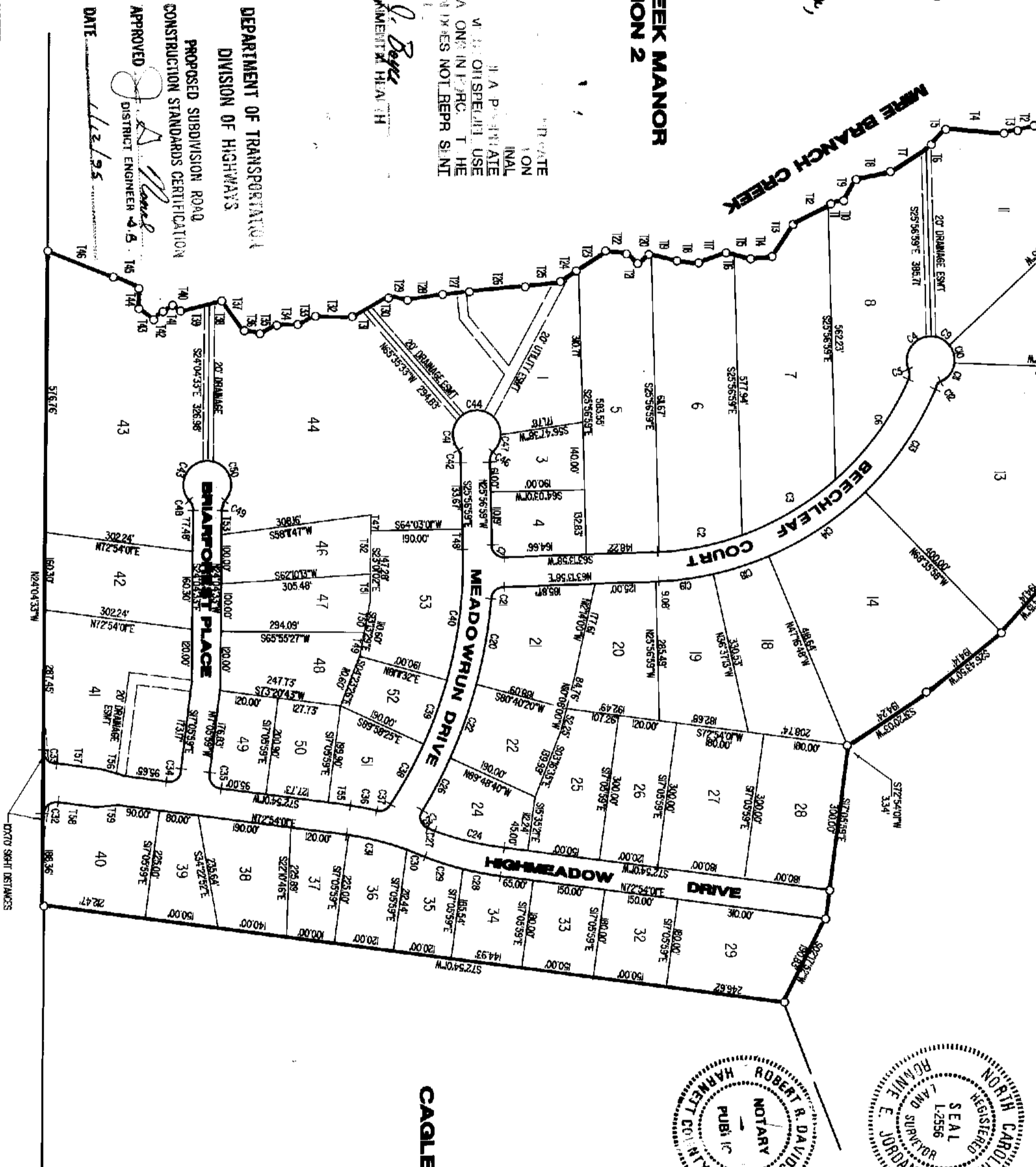


Robert R. Davidson
 17 January 95
 9:46 AM
 Roger P. Jordan by Quillik K. Jordan

**STONEY CREEK MANOR
 SECTION 2**

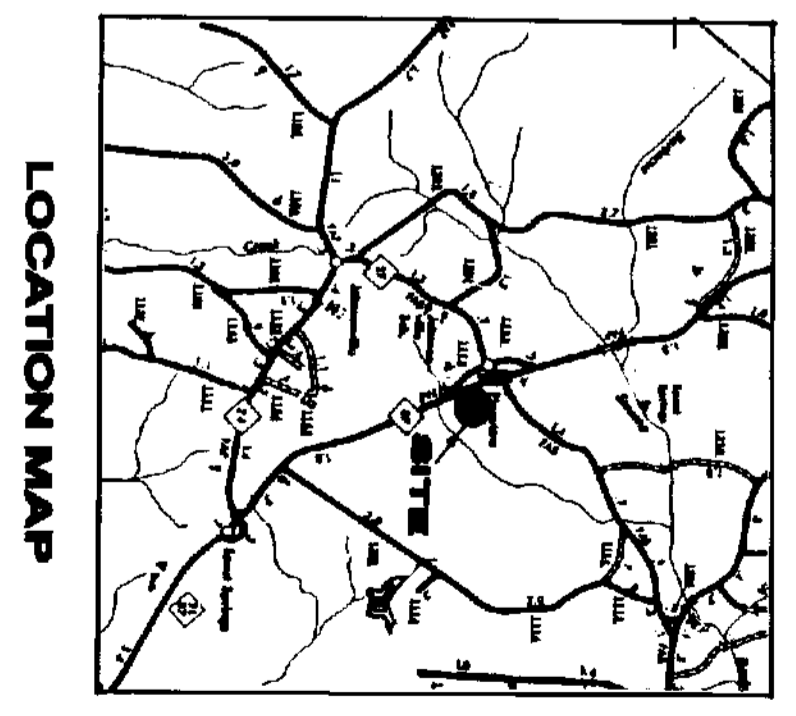
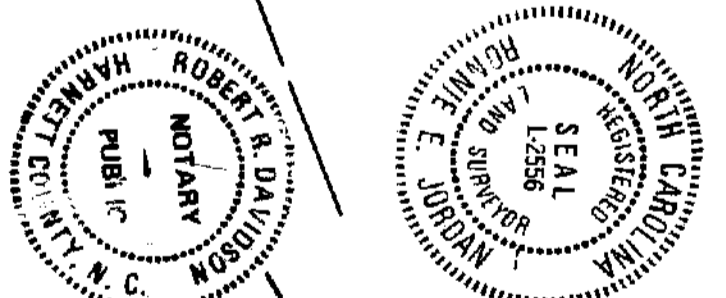
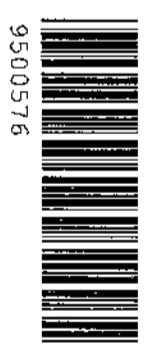
THE STATE OF NORTH CAROLINA
 COUNTY OF HARNETT
 I, ROBERT R. DAVIDSON, a Notary Public in and for the State of North Carolina, do hereby certify that the foregoing is a true and correct copy of the original as the same appears in my files and records.
 My commission expires on 1-13-95.
 ROBERT R. DAVIDSON
 Notary Public
 HARNETT COUNTY, N.C.

DEPARTMENT OF TRANSPORTATION
 DIVISION OF HIGHWAYS
 PROPOSED SUBDIVISION ROAD
 CONSTRUCTION STANDARDS CERTIFICATION
 APPROVED: [Signature]
 DISTRICT ENGINEER
 DATE: 11/2/95



**FUTURE
 DEVELOPMENT**

N.C. HWY. 87 150' R/W



LOCATION MAP

I, Ronnie E. Jordan, Registered Land Surveyor No. L-2556, certify that the following is a true and correct copy of the original as the same appears in my files and records.
 My commission expires March 22, 1997.
 RONNIE E. JORDAN
 Registered Land Surveyor
 HARNETT COUNTY, N.C.

CAGLE

CONVEYANCE OF OWNERSHIP, DEDICATION AND JURISDICTION

I, (WE) HEREBY CERTIFY THAT I AM (WE ARE) THE OWNER(S) OR PART OF THE PARTS OWNERS AND DESCRIBED HEREON AND THAT I (WE) HEREBY ADAPT THIS PLAN OF SUBDIVISION WITH MY (OUR) FREE CONSENT, ESTABLISH THE NEIGHBORHOOD STRUCK LINES, AND DEDICATE ALL STREETS, ALLEYS, WALKS, PARKS, AND OTHER SITES AND EASEMENTS TO PUBLIC OR PRIVATE USE AS NOTED, AND ALL OF THE LAND SHOWN HEREON IS WITHIN THE SUBDIVISION REGULATION JURISDICTION OF HARNETT COUNTY EXCEPT:

1. That this act is of a survey of another category, such as the recombination of existing parcels, a court-ordered survey or other exception to the definition of subdivision.

2. That the information applicable to this survey is such that I am unable to make a determination to the best of my professional ability as to provisions prohibited in (A) through (D) here.

3. That this act is of a survey that is located in such a portion of a county or municipality that is unregulated as to an ordinance that requires parcels of land.

4. That this act is of a survey of an existing parcel or parcels of land.

5. That this act is of a survey of another category, such as the recombination of existing parcels, a court-ordered survey or other exception to the definition of subdivision.

6. That the information applicable to this survey is such that I am unable to make a determination to the best of my professional ability as to provisions prohibited in (A) through (D) here.

RONNIE E. JORDAN, REGISTERED LAND SURVEYOR NO. L-2556

OWNERS ADDRESS:
 INVESTMENT'S UNLIMITED
 P.O. BOX 249
 DUNN, N.C. 28334
 PH: 499-0824

02-877-0101
 111 PACER 19 PHASE
 [Signature]
 OVER

<p>REVISED PLAT FOR STONEY CREEK MANOR SECTION 3 BARBECUE TWP. HARNETT CO., N.C. SCALE 1" = 200'</p>		<p>GODWIN - JORDAN & ASSOCIATES, P.A. ENGINEERING, SURVEYING & PLANNING P.O. BOX 249 DUNN, N.C. 28335 DUNN PH. (919) 892-5159 FAYE PH. (919) 483-1489</p>	
<p>REVISIONS</p>	<p>CONTRACT NO.</p>	<p>DATE 1-9-95</p>	<p>DRAWN BY R. DAVIDSON</p>
<p>SHEET NO. 1 OF 2</p>	<p>CHECKED BY R. JORDAN</p>		

367-B(A)

- C1 = 90-49-03
R = 25.00'
A = 39.63'
C = 35.61'
T = 25.36'
CH = N71 21'31"W 35.51'
- C2 = 15-51-28
R = 595.00'
A = 172.12'
C = 171.30'
T = 86.69'
CH = S34 48'14"W 171.50'
- C3 = 21-53-07
R = 585.00'
A = 229.45'
C = 222.10'
T = 113.11'
CH = S35 29'57"W 222.10'
- C4 = 112-37-25
R = 50.00'
A = 98.28'
C = 83.21'
T = 75.01'
CH = S09 46'00"W 83.21'
- C5 = 45-22-54
R = 25.00'
A = 19.80'
C = 19.29'
T = 10.45'
CH = S23 51'15"E 19.29'
- C6 = 25-39-11
R = 585.00'
A = 261.92'
C = 259.74'
T = 133.19'
CH = S11 39'47"W 259.74'
- C9 = 45-50-20
R = 50.00'
A = 40.00'
C = 38.94'
T = 21.14'
CH = S88 53'53"W 38.94'
- C10 = 45-50-12
R = 50.00'
A = 40.00'
C = 38.94'
T = 21.14'
CH = N45 09'51"W 38.94'
- C11 = 51-15-40
R = 50.00'
A = 53.46'
C = 50.95'
T = 29.61'
CH = N08 23'05"E 50.95'
- C12 = 40-36-21
R = 25.00'
A = 17.27'
C = 17.25'
T = 9.25'
CH = N18 42'45"E 17.35'
- C13 = 22-59-28
R = 645.00'
A = 238.82'
C = 237.09'
T = 131.18'
CH = N09 54'18"E 237.09'
- C14 = 21-19-10
R = 645.00'
A = 240.00'
C = 238.62'
T = 121.40'
CH = N32 03'37"E 238.62'
- C18 = 10-39-35
R = 545.00'
A = 120.00'
C = 119.89'
T = 60.17'
CH = N46 02'59"E 119.89'
- C19 = 9-51-11
R = 645.00'
A = 110.37'
C = 110.78'
T = 55.50'
CH = N50 18'22"E 110.78'
- C20 = 10-35-42
R = 369.00'
A = 129.60'
C = 128.75'
T = 89.76'
CH = N14 37'31"W 128.75'
- C21 = 83-09-29
R = 25.00'
A = 36.28'
C = 33.18'
T = 22.18'
CH = N21 39'18"E 33.18'
- C22 = 9-31-30
R = 568.00'
A = 160.78'
C = 150.60'
T = 80.58'
CH = N04 34'10"W 150.60'
- C23 = 82-01-26
R = 25.00'
A = 36.23'
C = 33.14'
T = 22.13'
CH = N65 35'16"W 33.14'
- C24 = 16-00-46
R = 519.30'
A = 145.30'
C = 144.83'
T = 73.13'
CH = S80 54'24"W 144.83'
- C25 = 39-36-51
R = 25.00'
A = 43.48'
C = 38.20'
T = 29.51'
CH = N42 40'33"W 38.20'
- C28 = 6-57-23
R = 968.00'
A = 117.57'
C = 117.50'
T = 58.86'
CH = N03 40'06"E 117.50'
- C29 = 9-05-24
R = 579.90'
A = 81.68'
C = 81.61'
T = 41.01'
CH = N46 52'05"E 81.61'
- C30 = 4-04-05
R = 579.90'
A = 41.17'
C = 41.17'
T = 20.60'
CH = N46 52'45"E 41.17'
- C31 = 11-56-41
R = 579.90'
A = 120.89'
C = 120.68'
T = 60.57'
CH = N78 52'21"E 120.68'
- C32 = 96-58-34
R = 25.00'
A = 42.31'
C = 37.44'
T = 28.25'
CH = N24 24'44"E 37.44'
- C33 = 82-01-26
R = 25.00'
A = 36.23'
C = 33.14'
T = 22.13'
CH = N65 35'16"W 33.14'
- C34 = 90-06-00
R = 25.00'
A = 39.27'
C = 35.36'
T = 25.00'
CH = S27 54'01"W 35.36'
- C35 = 30-00-00
R = 25.00'
A = 39.27'
C = 35.36'
T = 25.00'
CH = N62 03'59"W 35.36'
- C36 = 4-45-10
R = 53.00'
A = 53.00'
C = 53.00'
T = 26.55'
CH = S75 16'36"W 53.07'
- C37 = 59-39-29
R = 25.00'
A = 15.78'
C = 28.19'
T = 17.07'
CH = S49 19'57"W 28.19'
- C38 = 8-59-07
R = 908.00'
A = 142.40'
C = 142.25'
T = 40.16'
CH = S04 31'08"W 142.25'
- C39 = 42-50-00
R = 25.00'
A = 18.59'
C = 18.26'
T = 9.81'
CH = N02 33'33"W 18.26'
- C40 = 17-08-31
R = 908.00'
A = 271.60'
C = 270.65'
T = 136.85'
CH = S17 22'44"E 270.65'
- C41 = 39-11-26
R = 50.00'
A = 81.32'
C = 72.65'
T = 52.87'
CH = S22 11'16"E 72.65'
- C42 = 42-50-00
R = 25.00'
A = 18.69'
C = 18.26'
T = 9.81'
CH = S47 21'53"E 18.26'
- C43 = 139-50-31
R = 50.00'
A = 115.92'
C = 91.65'
T = 114.54'
CH = S00 29'34"E 91.65'
- C44 = 122-23-11
R = 50.00'
A = 106.80'
C = 87.63'
T = 90.32'
CH = S85 35'03"W 87.63'
- C45 = 42-50-00
R = 25.00'
A = 18.69'
C = 18.26'
T = 9.81'
CH = N04 31'59"W 18.26'
- C46 = 42-50-00
R = 25.00'
A = 18.69'
C = 18.26'
T = 9.81'
CH = N04 31'59"W 18.26'
- C47 = 56-05-23
R = 50.00'
A = 43.71'
C = 42.33'
T = 23.36'
CH = N08 03'40"W 42.33'
- C48 = 42-50-01
R = 25.00'
A = 18.49'
C = 18.26'
T = 9.81'
CH = S45 29'34"E 18.26'
- C49 = 42-50-00
R = 25.00'
A = 18.59'
C = 18.26'
T = 9.81'
CH = N02 33'33"W 18.26'
- C50 = 132-50-00
R = 50.00'
A = 115.92'
C = 91.65'
T = 114.54'
CH = N47 39'33"W 91.65'
- C51 = 57-42-26
R = 579.90'
A = 120.89'
C = 120.68'
T = 60.57'
CH = N78 52'21"E 120.68'
- C52 = 96-58-34
R = 25.00'
A = 42.31'
C = 37.44'
T = 28.25'
CH = N24 24'44"E 37.44'
- C53 = 82-01-26
R = 25.00'
A = 36.23'
C = 33.14'
T = 22.13'
CH = N65 35'16"W 33.14'
- C54 = 90-06-00
R = 25.00'
A = 39.27'
C = 35.36'
T = 25.00'
CH = S27 54'01"W 35.36'
- C55 = 30-00-00
R = 25.00'
A = 39.27'
C = 35.36'
T = 25.00'
CH = N62 03'59"W 35.36'
- C56 = 4-45-10
R = 53.00'
A = 53.00'
C = 53.00'
T = 26.55'
CH = S75 16'36"W 53.07'
- C57 = 59-39-29
R = 25.00'
A = 15.78'
C = 28.19'
T = 17.07'
CH = S49 19'57"W 28.19'
- C58 = 8-59-07
R = 908.00'
A = 142.40'
C = 142.25'
T = 40.16'
CH = S04 31'08"W 142.25'
- C59 = 42-50-00
R = 25.00'
A = 18.59'
C = 18.26'
T = 9.81'
CH = N02 33'33"W 18.26'
- C60 = 17-08-31
R = 908.00'
A = 271.60'
C = 270.65'
T = 136.85'
CH = S17 22'44"E 270.65'
- C61 = 39-11-26
R = 50.00'
A = 81.32'
C = 72.65'
T = 52.87'
CH = S22 11'16"E 72.65'
- C62 = 42-50-00
R = 25.00'
A = 18.69'
C = 18.26'
T = 9.81'
CH = S47 21'53"E 18.26'
- C63 = 139-50-31
R = 50.00'
A = 115.92'
C = 91.65'
T = 114.54'
CH = S00 29'34"E 91.65'
- C64 = 122-23-11
R = 50.00'
A = 106.80'
C = 87.63'
T = 90.32'
CH = S85 35'03"W 87.63'
- C65 = 42-50-00
R = 25.00'
A = 18.69'
C = 18.26'
T = 9.81'
CH = N04 31'59"W 18.26'
- C66 = 42-50-00
R = 25.00'
A = 18.69'
C = 18.26'
T = 9.81'
CH = N04 31'59"W 18.26'
- C67 = 56-05-23
R = 50.00'
A = 43.71'
C = 42.33'
T = 23.36'
CH = N08 03'40"W 42.33'
- C68 = 42-50-01
R = 25.00'
A = 18.49'
C = 18.26'
T = 9.81'
CH = S45 29'34"E 18.26'
- C69 = 42-50-00
R = 25.00'
A = 18.59'
C = 18.26'
T = 9.81'
CH = N02 33'33"W 18.26'
- C70 = 132-50-00
R = 50.00'
A = 115.92'
C = 91.65'
T = 114.54'
CH = N47 39'33"W 91.65'
- C71 = 57-42-26
R = 579.90'
A = 120.89'
C = 120.68'
T = 60.57'
CH = N78 52'21"E 120.68'
- C72 = 96-58-34
R = 25.00'
A = 42.31'
C = 37.44'
T = 28.25'
CH = N24 24'44"E 37.44'
- C73 = 82-01-26
R = 25.00'
A = 36.23'
C = 33.14'
T = 22.13'
CH = N65 35'16"W 33.14'
- C74 = 90-06-00
R = 25.00'
A = 39.27'
C = 35.36'
T = 25.00'
CH = S27 54'01"W 35.36'
- C75 = 30-00-00
R = 25.00'
A = 39.27'
C = 35.36'
T = 25.00'
CH = N62 03'59"W 35.36'
- C76 = 4-45-10
R = 53.00'
A = 53.00'
C = 53.00'
T = 26.55'
CH = S75 16'36"W 53.07'
- C77 = 59-39-29
R = 25.00'
A = 15.78'
C = 28.19'
T = 17.07'
CH = S49 19'57"W 28.19'
- C78 = 8-59-07
R = 908.00'
A = 142.40'
C = 142.25'
T = 40.16'
CH = S04 31'08"W 142.25'
- C79 = 42-50-00
R = 25.00'
A = 18.59'
C = 18.26'
T = 9.81'
CH = N02 33'33"W 18.26'
- C80 = 17-08-31
R = 908.00'
A = 271.60'
C = 270.65'
T = 136.85'
CH = S17 22'44"E 270.65'
- C81 = 39-11-26
R = 50.00'
A = 81.32'
C = 72.65'
T = 52.87'
CH = S22 11'16"E 72.65'
- C82 = 42-50-00
R = 25.00'
A = 18.69'
C = 18.26'
T = 9.81'
CH = S47 21'53"E 18.26'
- C83 = 139-50-31
R = 50.00'
A = 115.92'
C = 91.65'
T = 114.54'
CH = S00 29'34"E 91.65'
- C84 = 122-23-11
R = 50.00'
A = 106.80'
C = 87.63'
T = 90.32'
CH = S85 35'03"W 87.63'
- C85 = 42-50-00
R = 25.00'
A = 18.69'
C = 18.26'
T = 9.81'
CH = N04 31'59"W 18.26'
- C86 = 42-50-00
R = 25.00'
A = 18.69'
C = 18.26'
T = 9.81'
CH = N04 31'59"W 18.26'
- C87 = 56-05-23
R = 50.00'
A = 43.71'
C = 42.33'
T = 23.36'
CH = N08 03'40"W 42.33'
- C88 = 42-50-01
R = 25.00'
A = 18.49'
C = 18.26'
T = 9.81'
CH = S45 29'34"E 18.26'
- C89 = 42-50-00
R = 25.00'
A = 18.59'
C = 18.26'
T = 9.81'
CH = N02 33'33"W 18.26'
- C90 = 132-50-00
R = 50.00'
A = 115.92'
C = 91.65'
T = 114.54'
CH = N47 39'33"W 91.65'
- C91 = 57-42-26
R = 579.90'
A = 120.89'
C = 120.68'
T = 60.57'
CH = N78 52'21"E 120.68'
- C92 = 96-58-34
R = 25.00'
A = 42.31'
C = 37.44'
T = 28.25'
CH = N24 24'44"E 37.44'
- C93 = 82-01-26
R = 25.00'
A = 36.23'
C = 33.14'
T = 22.13'
CH = N65 35'16"W 33.14'
- C94 = 90-06-00
R = 25.00'
A = 39.27'
C = 35.36'
T = 25.00'
CH = S27 54'01"W 35.36'
- C95 = 30-00-00
R = 25.00'
A = 39.27'
C = 35.36'
T = 25.00'
CH = N62 03'59"W 35.36'
- C96 = 4-45-10
R = 53.00'
A = 53.00'
C = 53.00'
T = 26.55'
CH = S75 16'36"W 53.07'
- C97 = 59-39-29
R = 25.00'
A = 15.78'
C = 28.19'
T = 17.07'
CH = S49 19'57"W 28.19'
- C98 = 8-59-07
R = 908.00'
A = 142.40'
C = 142.25'
T = 40.16'
CH = S04 31'08"W 142.25'
- C99 = 42-50-00
R = 25.00'
A = 18.59'
C = 18.26'
T = 9.81'
CH = N02 33'33"W 18.26'
- C100 = 17-08-31
R = 908.00'
A = 271.60'
C = 270.65'
T = 136.85'
CH = S17 22'44"E 270.65'
- C101 = 39-11-26
R = 50.00'
A = 81.32'
C = 72.65'
T = 52.87'
CH = S22 11'16"E 72.65'
- C102 = 42-50-00
R = 25.00'
A = 18.69'
C = 18.26'
T = 9.81'
CH = S47 21'53"E 18.26'
- C103 = 139-50-31
R = 50.00'
A = 115.92'
C = 91.65'
T = 114.54'
CH = S00 29'34"E 91.65'
- C104 = 122-23-11
R = 50.00'
A = 106.80'
C = 87.63'
T = 90.32'
CH = S85 35'03"W 87.63'
- C105 = 42-50-00
R = 25.00'
A = 18.69'
C = 18.26'
T = 9.81'
CH = N04 31'59"W 18.26'
- C106 = 42-50-00
R = 25.00'
A = 18.69'
C = 18.26'
T = 9.81'
CH = N04 31'59"W 18.26'
- C107 = 56-05-23
R = 50.00'
A = 43.71'
C = 42.33'
T = 23.36'
CH = N08 03'40"W 42.33'
- C108 = 42-50-01
R = 25.00'
A = 18.49'
C = 18.26'
T = 9.81'
CH = S45 29'34"E 18.26'
- C109 = 42-50-00
R = 25.00'
A = 18.59'
C = 18.26'
T = 9.81'
CH = N02 33'33"W 18.26'
- C110 = 132-50-00
R = 50.00'
A = 115.92'
C = 91.65'
T = 114.54'
CH = N47 39'33"W 91.65'
- C111 = 57-42-26
R = 579.90'
A = 120.89'
C = 120.68'
T = 60.57'
CH = N78 52'21"E 120.68'
- C112 = 96-58-34
R = 25.00'
A = 42.31'
C = 37.44'
T = 28.25'
CH = N24 24'44"E 37.44'
- C113 = 82-01-26
R = 25.00'
A = 36.23'
C = 33.14'
T = 22.13'
CH = N65 35'16"W 33.14'
- C114 = 90-06-00
R = 25.00'
A = 39.27'
C = 35.36'
T = 25.00'
CH = S27 54'01"W 35.36'
- C115 = 30-00-00
R = 25.00'
A = 39.27'
C = 35.36'
T = 25.00'
CH = N62 03'59"W 35.36'
- C116 = 4-45-10
R = 53.00'
A = 53.00'
C = 53.00'
T = 26.55'
CH = S75 16'36"W 53.07'
- C117 = 59-39-29
R = 25.00'
A = 15.78'
C = 28.19'
T = 17.07'
CH = S49 19'57"W 28.19'
- C118 = 8-59-07
R = 908.00'
A = 142.40'
C = 142.25'
T = 40.16'
CH = S04 31'08"W 142.25'
- C119 = 42-50-00
R = 25.00'
A = 18.59'
C = 18.26'
T = 9.81'
CH = N02 33'33"W 18.26'
- C120 = 17-08-31
R = 908.00'
A = 271.60'
C = 270.65'
T = 136.85'
CH = S17 22'44"E 270.65'
- C121 = 39-11-26
R = 50.00'
A = 81.32'
C = 72.65'
T = 52.87'
CH = S22 11'16"E 72.65'
- C122 = 42-50-00
R = 25.00'
A = 18.69'
C = 18.26'
T = 9.81'
CH = S47 21'53"E 18.26'
- C123 = 139-50-31
R = 50.00'
A = 115.92'
C = 91.65'
T = 114.54'
CH = S00 29'34"E 91.65'
- C124 = 122-23-11
R = 50.00'
A = 106.80'
C = 87.63'
T = 90.32'
CH = S85 35'03"W 87.63'
- C125 = 42-50-00
R = 25.00'
A = 18.69'
C = 18.26'
T = 9.81'
CH = N04 31'59"W 18.26'
- C126 = 42-50-00
R = 25.00'
A = 18.69'
C = 18.26'
T = 9.81'
CH = N04 31'59"W 18.26'
- C127 = 56-05-23
R = 50.00'
A = 43.71'
C = 42.33'
T = 23.36'
CH = N08 03'40"W 42.33'
- C128 = 42-50-01
R = 25.00'
A = 18.49'
C = 18.26'
T = 9.81'
CH = S45 29'34"E 18.26'
- C129 = 42-50-00
R = 25.00'
A = 18.59'
C = 18.26'
T = 9.81'
CH = N02 33'33"W 18.26'
- C130 = 132-50-00
R = 50.00'
A = 115.92'
C = 91.65'
T = 114.54'
CH = N47 39'33"W 91.65'
- C131 = 57-42-26
R = 579.90'
A = 120.89'
C = 120.68'
T = 60.57'
CH = N78 52'21"E 120.68'
- C132 = 96-58-34
R = 25.00'
A = 42.31'
C = 37.44'
T = 28.25'
CH = N24 24'44"E 37.44'
- C133 = 82-01-26
R = 25.00'
A = 36.23'
C = 33.14'
T = 22.13'
CH = N65 35'16"W 33.14'
- C134 = 90-06-00
R = 25.00'
A = 39.27'
C = 35.36'
T = 25.00'
CH = S27 54'01"W 35.36'
- C135 = 30-00-00
R = 25.00'
A = 39.27'
C = 35.36'
T = 25.00'
CH = N62 03'59"W 35.36'
- C136 = 4-45-10
R = 53.00'
A = 53.00'
C = 53.00'
T = 26.55'
CH = S75 16'36"W 53.07'
- C137 = 59-39-29
R = 25.00'
A = 15.78'
C = 28.19'
T = 17.07'
CH = S49 19'57"W 28.19'
- C138 = 8-59-07
R = 908.00'
A = 142.40'
C = 142.25'
T = 40.16'
CH = S04 31'08"W 142.25'
- C139 = 42-50-00
R = 25.00'
A = 18.59'
C = 18.26'
T = 9.81'
CH = N02 33'33"W 18.26'
- C140 = 17-08-31
R = 908.00'
A = 271.60'
C = 270.65'
T = 136.85'
CH = S17 22'44"E 270.65'
- C141 = 39-11-26
R = 50.00'
A = 81.32'
C = 72.65'
T = 52.87'
CH = S22 11'16"E 72.65'
- C142 = 42-50-00
R = 25.00'
A = 18.69'
C = 18.26'
T = 9.81'
CH = S47 21'53"E 18.26'
- C143 = 139-50-31
R = 50.00'
A = 115.92'
C = 91.65'
T = 114.54'
CH = S00 29'34"E 91.65'
- C144 = 122-23-11
R = 50.00'
A = 106.80'
C = 87.63'
T = 90.32'
CH = S85 35'03"W 87.63'
- C145 = 42-50-00
R = 25.00'
A = 18.69'
C = 18.26'
T = 9.81'
CH = N04 31'59"W 18.26'
- C146 = 42-50-00
R = 25.00'
A = 18.69'
C = 18.26'
T = 9.81'
CH = N04 31'59"W 18.26'
- C147 = 56-05-23
R = 50.00'
A = 43.71'
C = 42.33'
T = 23.36'
CH = N08 03'40"W 42.33'
- C148 = 42-50-01
R = 25.00'
A = 18.49'
C = 18.26'
T = 9.81'
CH = S45 29'34"E 18.26'
- C149 = 42-50-00
R = 25.00'
A = 18.59'
C = 18.26'
T = 9.81'
CH = N02 33'33"W 18.26'
- C150 = 132-50-00
R = 50.00'
A = 115.92'
C = 91.65'
T = 114.54'
CH = N47 39'33"W 91.65'
- C151 = 57-42-26
R = 579.90'
A = 120.89'
C = 120.68'
T = 60.57'
CH = N78 52'21"E 120.68'
- C152 = 96-58-34
R = 25.00'
A = 42.31'
C = 37.44'
T = 28.25'
CH = N24 24'44"E 37.44'
- C153 = 82-01-26
R = 25.00'
A = 36.23'
C = 33.14'
T = 22.13'
CH = N65 35'16"W 33.14'
- C154 = 90-06-00
R = 25.00'
A = 39.27'
C = 35.36'
T = 25.00'
CH = S27 54'01"W 35.36'
- C155 = 30-00-00
R =