

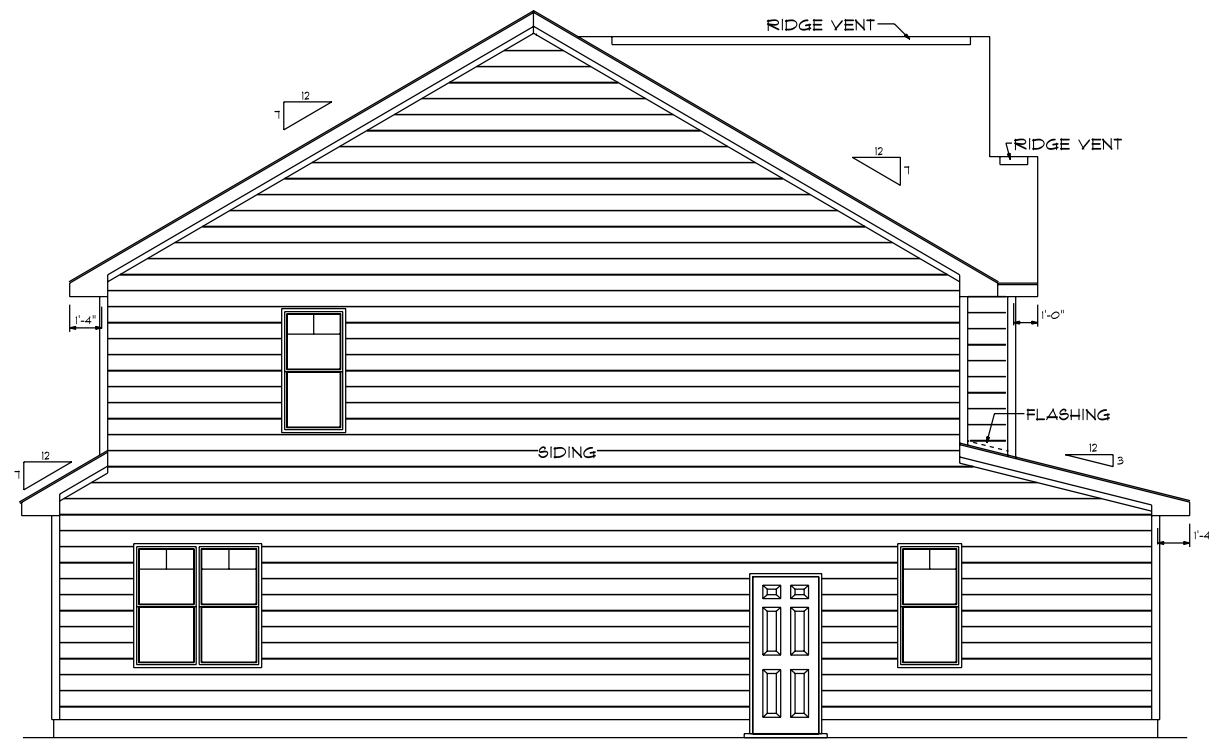
FRONT ELEVATION

SCALE: 1/4" = 1'0"

DETERMINE STEPS
ON SITE BY GRADE

ATTIC VENTILIZATION - $3462 \text{ S/F} / 300 = 11.54 \text{ S/F REQUIRED}$

9'0" FINISHED CEILING HEIGHT ON FIRST FLOOR
 1'4" WINDOW HEADER HEIGHT ON FIRST FLOOR
 8'0" FINISHED CEILING HEIGHT ON SECOND FLOOR
 6'8" WINDOW HEADER HEIGHT ON SECOND FLOOR



LEFT ELEVATION

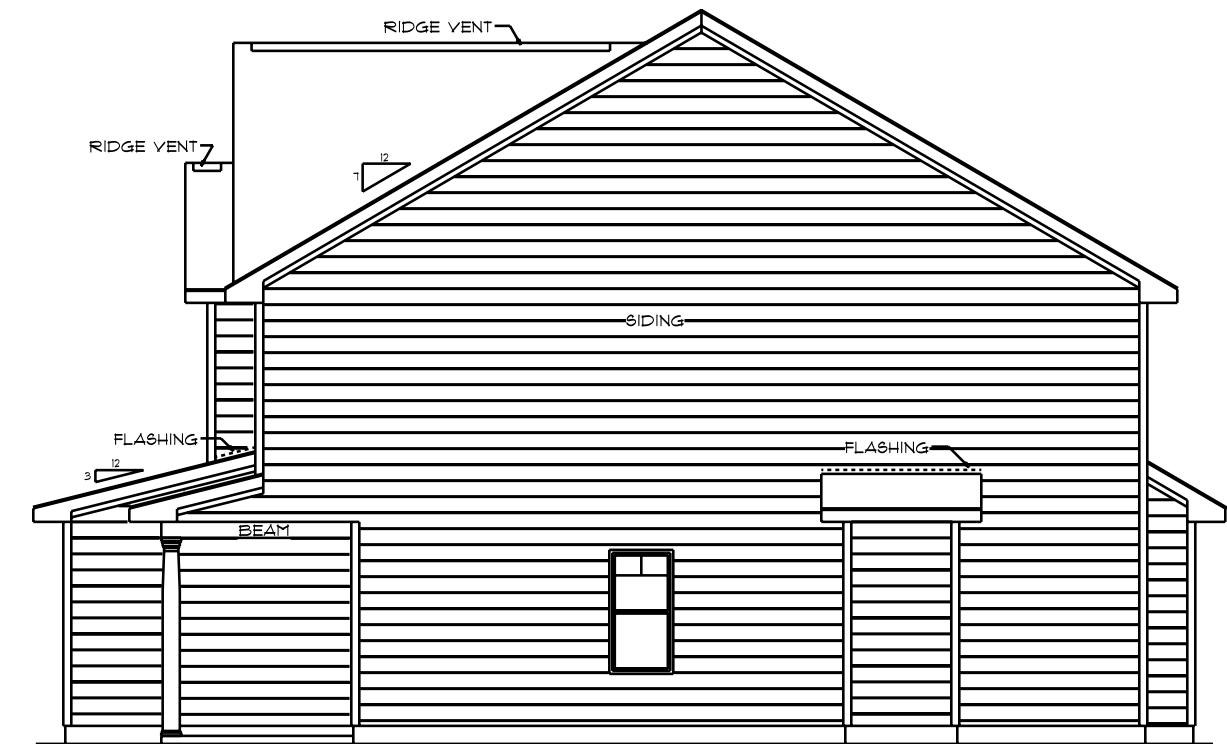
SCALE: 1/8" = 1'0"



REAR ELEVATION

SCALE: 1/8" = 1'0"

DETERMINE STEPS
ON SITE BY GRADE



RIGHT ELEVATION

SCALE: 1/8" = 1'0"

I DO HERBY CERTIFY THAT THIS DRAWING AND RELATED SPECIFICATIONS MEET ALL LOCAL REQUIREMENTS AND ARE IN SUBSTANTIAL CONFORMITY WITH THE INTERNATIONAL BUILDING CODE COUNCIL(2018 N.C. BUILDING CODE).

DESIGNED BY
 GCP DESIGNS
 HOPE MILLS, NORTH CAROLINA
 WWW.GCP@MYWAY.COM

BOOHER
 SE-2171

SOUTHEASTERN CONSTRUCTION

SUBDIVISION

SCALE: AS NOTED

DATE: FEB. 2021

LOT NO.

DRAWN BY: GCP

NOTES