

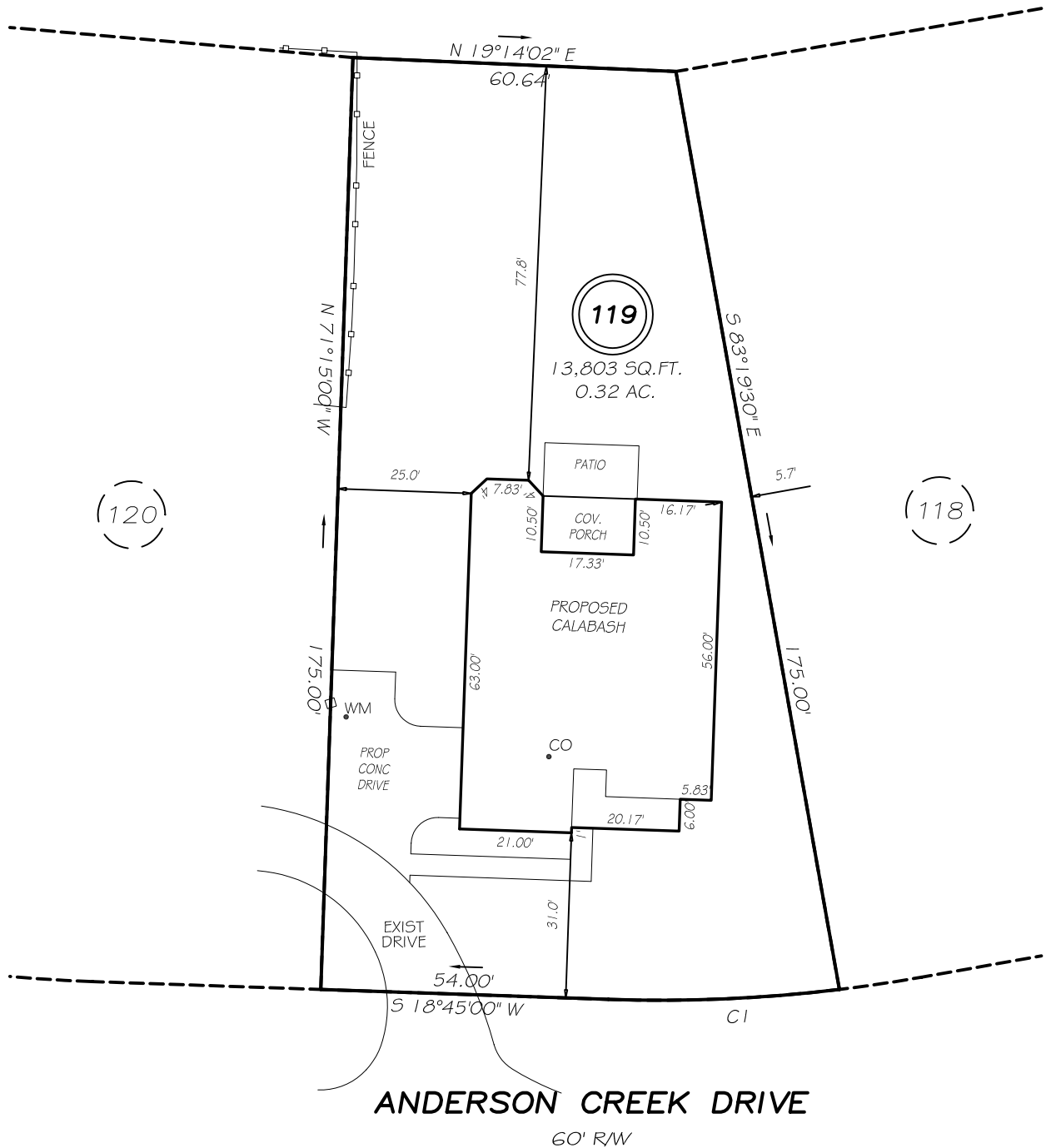
I, NICHOLAS M. FRENCH, certify that under my direction and supervision this map was drawn from an actual field survey; that the error of closure of the survey as calculated by coordinates is 1: 10,000+; that the area shown hereon was calculated by coordinates.

Witness my hand and seal this day of MONTH 2020.

MAP 2001 PG 617
HARNETT CO. REGISTRY

N

FUTURE DEVELOPMENT



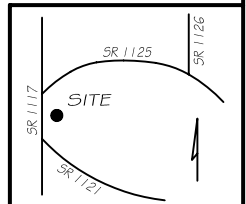
REVISION: LEFT HAND & FORWARD 1/20/21
REVISION: FIELD LOCATIONS 1/19/21

CI R=280.00' L=43.42' N14°18'27"E 43.38'

LEGEND

PRELIMINARY
NOT FOR RECORDATION,
SALES OR CONVEYANCE

EIP	EXISTING IRON PIPE	FES	FLARED END SECTION
IPS	IRON PIPE SET	WM	WATER METER
RAW	RIGHT OF WAY	CO	CLEAN OUT
N/F	NOW OR FORMERLY	FH	FIRE HYDRANT
EIS	EXISTING IRON STAKE	CB	CATCH BASIN



GRIFFIN LAND SURVEYING, INC.

P. O. BOX 148
FUQUAY-VARINA, NC 27526
(919) - 567-1963

PLOT PLAN

FOR

H & H HOMES
ANDERSON CREEK CLUB
PHASE 1- MAP 3
LOT 119

SCHOLAR DRIVE
NORTH CAROLINA

HARNETT COUNTY ANDERSON CREEK TOWNSHIP

DRAWN BY NMF

DATE 11/30/20

CHECKED BY NMF

SCALE 1" = 30'