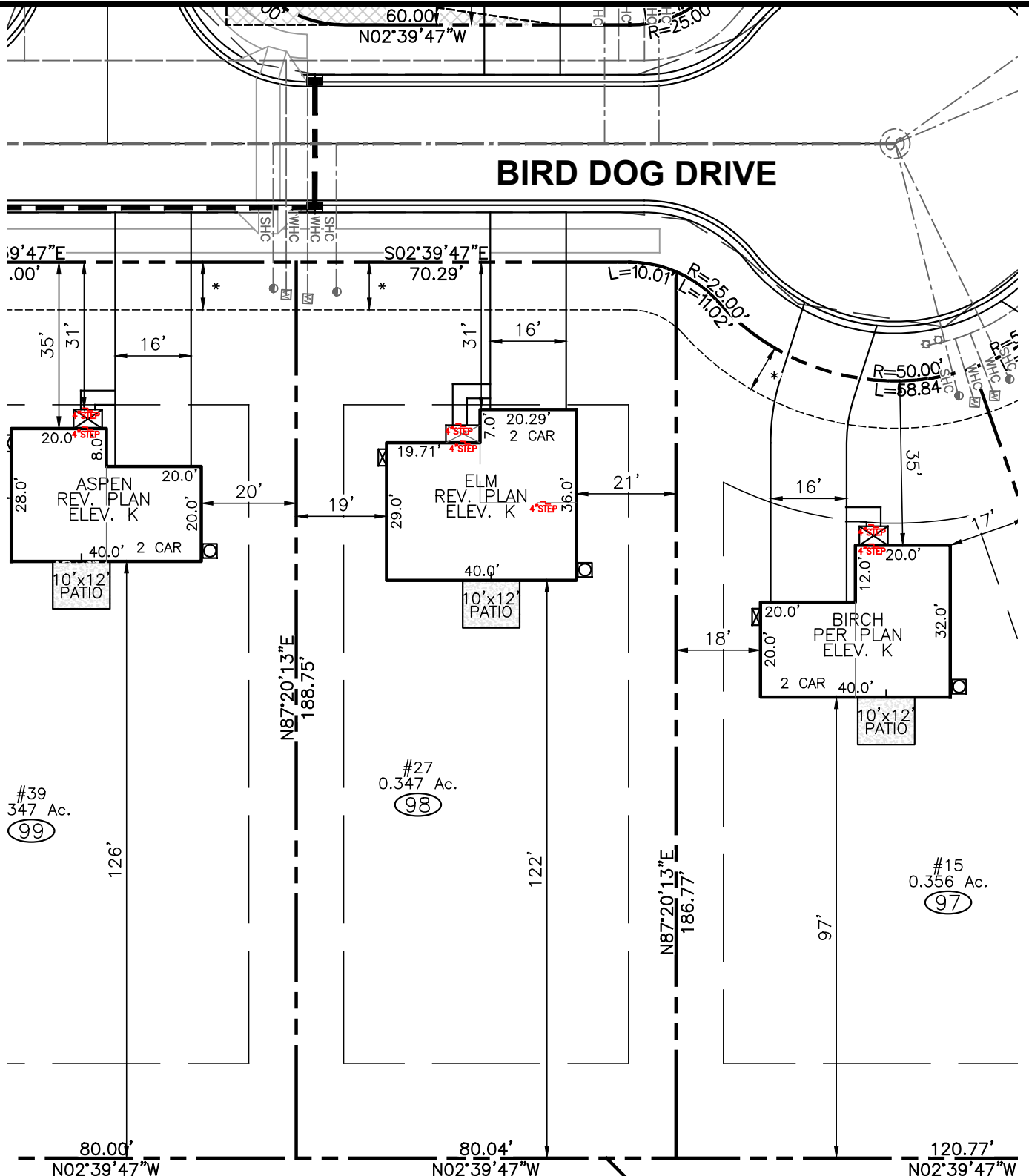


BIRD DOG DRIVE



#39
347 Ac.
(99)

#27
0.347 Ac.
(98)

#15
0.356 Ac.
(97)

N/F
AZUZAN BUSTOS
GABRIEL CAMPOS
DEED BOOK 3787, PAGE 374
MAP NUMBER 2007-636

N/F
Jacqueline A. Wilson
Deed Book 3219, Page 767
Map Number 2007-635

LEGEND

- ELEC. METER
- A/C UNIT

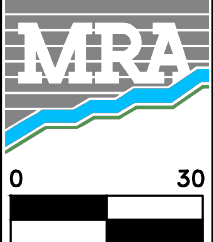
* DENOTES 10' UTILITY AND DRAINAGE EASEMENT



BUILDING SETBACK CHART	
FRONT	30' MIN.
SIDE	10' MIN. (20' CORNER)
REAR	20' MIN.
IMPERVIOUS	2,005 S.F. (13%)

RYAN HOMES—RLH AREA CALCULATIONS	
DRIVEWAY	664 SF
LEADWALK	41 SF
PUBLIC WALK	303 SF
SOD	13,094 SF
WHC	33 LF
SHC	34 LF
PATIO	120 SF
HSE FACING	WEST

BUILDER
RYAN HOMES
5734 TRINITY ROAD, SUITE 200
RALEIGH, NC 27607
PHONE: 919-233-0793



MORRIS & RITCHE ASSOCIATES OF NC, PC
ENGINEERS, ARCHITECTS, PLANNERS, SURVEYORS AND LANDSCAPE ARCHITECTS
5605 CHAPEL HILL ROAD, SUITE 112
RALEIGH, NC 27607 PHONE:
984-200-2103
FIRM LICENSES C-4182 & G-492

www.mragta.com

SITE PLAN
FOR
QUAIL GLEN
PHASE 5
LOT 98 #27 BIRD DOG DRIVE
BLACK RIVER TOWNSHIP
HARNETT COUNTY NORTH CAROLINA

SCALE: 1"=30' DATE: FEBRUARY 11, 2021 DRAWN BY: M.H. DESIGN BY: M.H. REVIEW BY: D.AL. JOB NO.: 20314