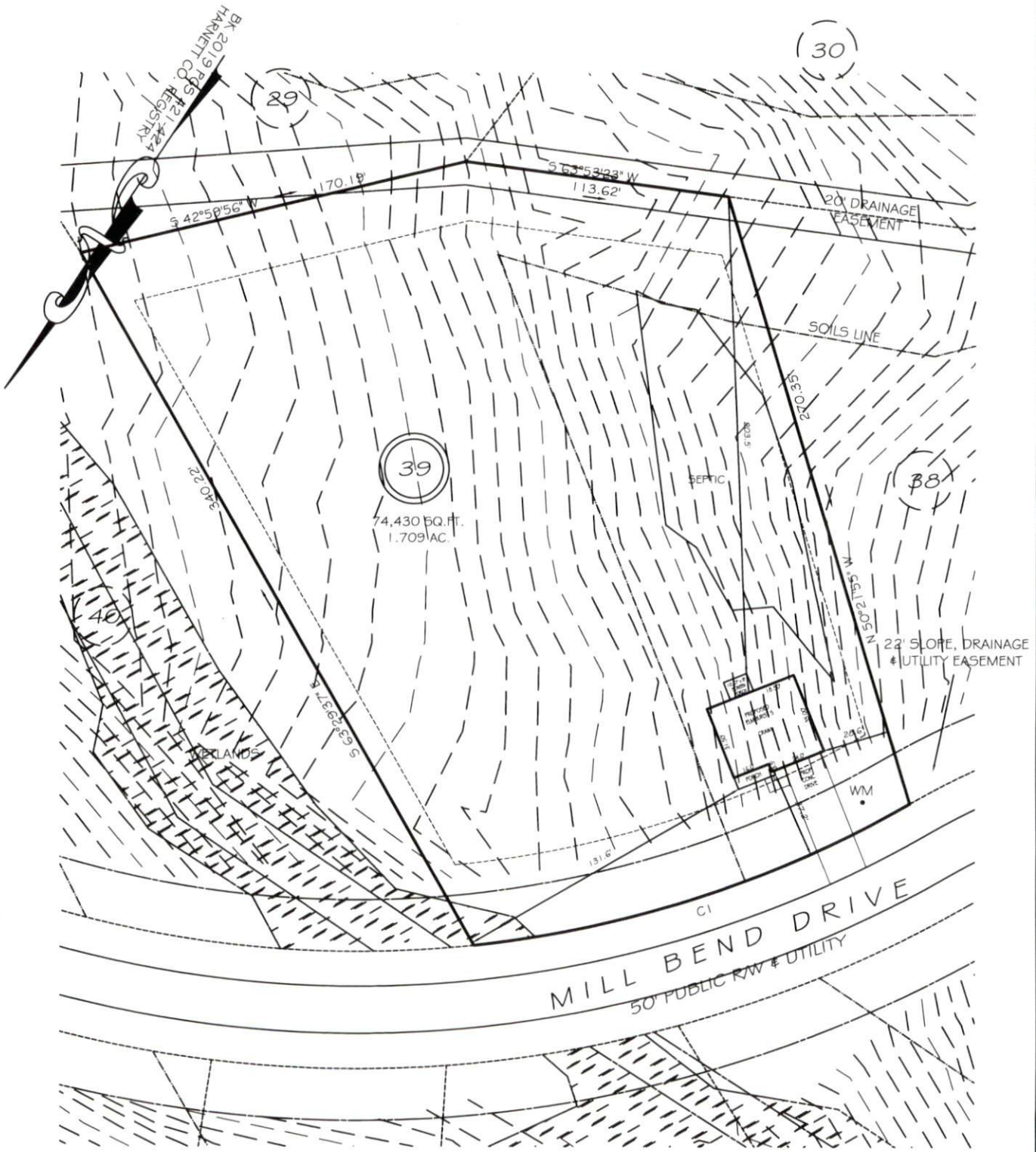


I, MICHAEL P. GRIFFIN, certify that under my direction and supervision this map was drawn from an actual field survey; that the error of closure of the survey as calculated by coordinates is 1: 10,000+; that the area shown hereon was calculated by coordinates.  
 Witness my hand and seal this day of MONTH 2020.



39  
 74,430 SQ. FT.  
 1.709 AC.

30

38

40

MILL BEND DRIVE  
 50' PUBLIC R/W & UTILITY

IMPERVIOUS AREAS

HOUSE	1515 SQ. FT.
DRIVE & WALKS	696 SQ. FT.
PATIO	000 SQ. FT.
TOTAL	2211 SQ. FT.
ALLOWED	3250 SQ. FT.

SETBACKS

FRONT	35'
REAR	25'
SIDE	10'
CORNER SIDE	20'

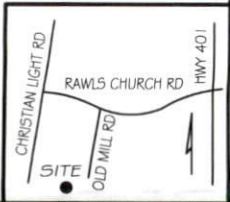
REVISION: NEW PLANS 1/15/21

CI R=475.00' L=197.68' S38°22'32"W 196.26'

**PRELIMINARY**  
 NOT FOR RECORDATION,  
 SALES OR CONVEYANCE

LEGEND

EIP	EXISTING IRON PIPE	FES	FLARED END SECTION
IPS	IRON PIPE SET	WM	WATER METER
R/W	RIGHT OF WAY	CO	CLEAN OUT
N/F	NOW OR FORMERLY	FH	FIRE HYDRANT
EIS	EXISTING IRON STAKE	CB	CATCH BASIN



PLOT PLAN