

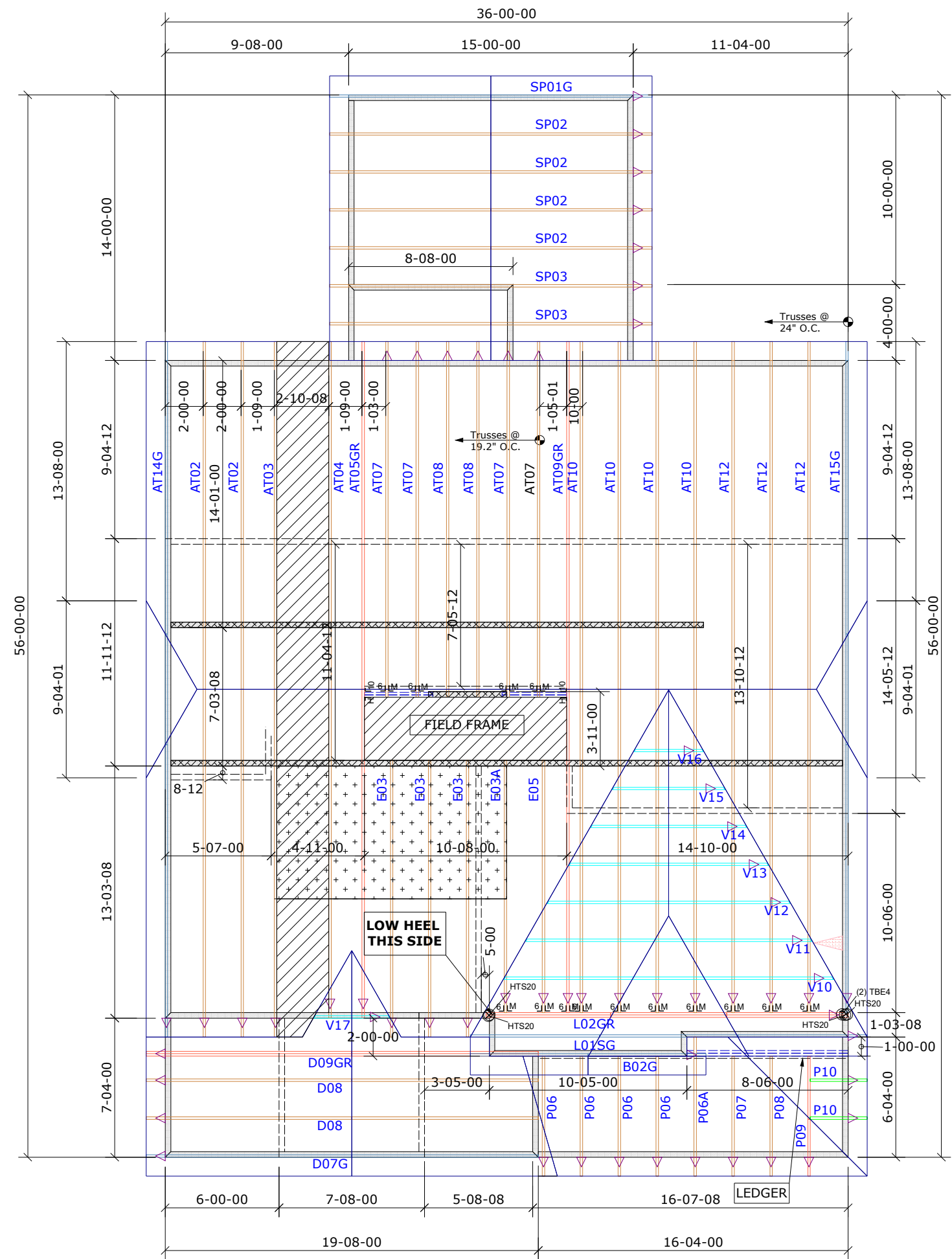
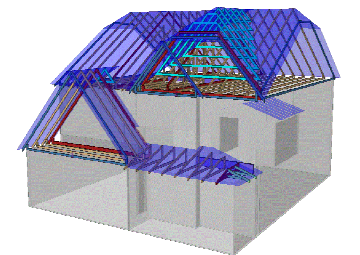
General Notes:
 - Per ANSI/TPI 1-2002 all " Truss to Wall" connections are the responsibility of the Building Designer, not the Truss Manufacturer.
 - Dimensions are Feet-Inches- Sixteenths.
 - Trusses are to be 24" o.c. unless noted otherwise (U.N.O.)
 - Trusses are not designed to support brick U.N.O.
 - Do not cut or modify trusses without first contacting Builders FirstSource.
 - Immediately contact Builders FirstSource if trusses are damaged.

Connection Notes:
 - All hangers are to be Simpson or equivalent U.N.O.
 - Use Manufacturer's specifications for all hanger connections U.N.O.
 - Use 10d x 1 1/2" Nails in hanger connections to single ply roof girder trusses.

Floor notes:
 - Shift truss as required to avoid plumbing traps.
 - Installation Contractor and/or Field Supervisor are to verify all dimensions, trap locations, and options prior to installation

Dimension Notes:
 - Drawing not to scale. Do not scale dimensions

◁ ▷ ▽ LEFT END OF TRUSS AS SHOWN ON TRUSS DETAIL DRAWINGS ARE INDICATED BY TRIANGLE ICONS.



HANGER LIST		ALL TIE DOWNS H2.5A UNLESS NOTED	
14	HTU26	M	16
2	HHUS410	Hj	10
2	TBE4	I	1
4	HTS20	/	

SPECIAL ITEMS LIST	

MISC MATERIAL	

MCKEE	
NELSON II	ELEV: EURO
ANDERSON CREEK ACADEMY	
---	NC LOT: 1076
APPWRIGHT #	

[FINISHED WALKUP]	CODE: IRC 2015
[COVERED PORCH]	LOADING:
[---]	T.C.L.L. 20 PSF
DESIGNED BY: MTJ	T.C.D.L. 10 PSF
LAYOUT: EUROWUCP	B.C.L.L. 0 PSF
L/O DATE: 2/16/2021	B.C.D.L. 10 PSF
REVISION HISTORY	
REV1: XX/XX/XX	M.P.H. 130 MPH
REV2: XX/XX/XX	EXPOSURE CATEGORY
REV3: XX/XX/XX	B (WOODED AREAS/OTHERS)
PICK TICKET: ---	JOB NO: ---
SALES NO: ---	ACCT NO: ---

HATCH LEGEND	
	ATTIC ROOM
	VOLUME CEILING
	STICK FRAMING