

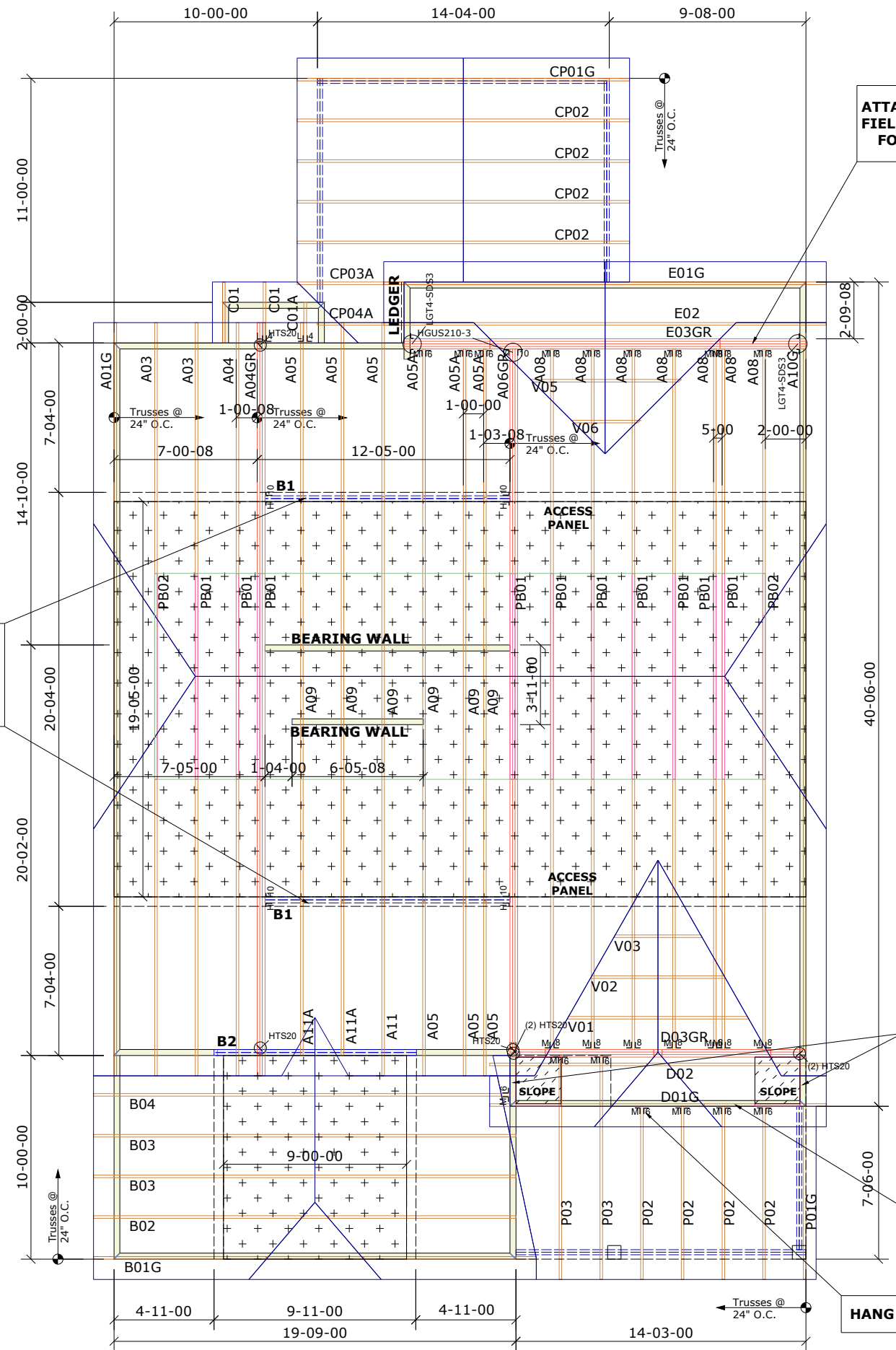
Builders First Source
 23 Red Cedar Way
 Apex, NC 27523
 Phone: (919) 363-4956
 Fax: (919) 387-8565
 http://www.blr.com

General Notes:
 - Per ANSI/TPI 1-2002 all "Truss to Wall" connections are the responsibility of the Building Designer, not the Truss Manufacturer.
 - Dimensions are Feet-Inches- Sixteenths.
 - Trusses are to be 24" o.c. unless noted otherwise (U.N.O.)
 - Trusses are not designed to support brick U.N.O.
 - Do not cut or modify trusses without first contacting Builders FirstSource.
 - Immediately contact Builders FirstSource if trusses are damaged.

Connection Notes:
 - All hangers are to be Simpson or equivalent U.N.O.
 - Use Manufacturer's specifications for all hanger connections U.N.O.
 - Use 10d x 1 1/2" Nails in hanger connections to single ply roof girder trusses.

Floor Notes:
 - Shift truss as required to avoid plumbing traps.
 - Installation Contractor and/or Field Supervisor are to verify all dimensions, trap locations, and options prior to installation.

Dimension Notes:
 - Drawing not to scale. Do not scale dimensions



ATTACH 4-PLY GIRDER TOGETHER IN FIELD. REFERENCE TRUSS DRAWING FOR SPECIFIC BOLTING PATTERN

ATTACH DOUBLE 2X6 TOP PLATE TO TOP OF END VERTICAL MEMBER FOR TRUSSES (A05, A05A, A11)

FRAME WALLS TO 5'-6-1/8" A.F.F

FIELD/BALLOON FRAME GABLE WALL TO UNDERSIDE OF E01G GABLE TRUSS

HANG TO RIM BOARD

Hanger List		All Tie Downs H2.5A Unless noted	
2	LUS24	U14	
10	HTU26	M18	
14	HTU28	M18	
4	HHUS410	Hj 09	B2
1	HGUS210-3	Hj 10	
7	HTS20		
2	LGT4-SDS3		

Beam List	
	(2-PLY) 1-3/4" x 16" x 13'-0"
	(2-PLY) 1-3/4" x 11-7/8" x 11'-0"

MCKEE HOMES		
FINLEY	Elev:	EURO
ANDERSON CREEK		
WAKE	NC	Lot: 1071
UNFINISHED 3RD FLOOR, BDR4		
Appwright #		
Code: IRC 2015		
Loading:		
T.C.L.L.	20.0 lb/ft2	
T.C.D.L.	10.0 lb/ft2	
B.C.L.L.	0.0 lb/ft2	
B.C.D.L.	10.0 lb/ft2	
Designed By:	MWA	
Layout:	FINLEY	
L/O Date:	02/11/2021	
Revision History		
Rev1:	xx/xx/xx	M.P.H. 130
Rev2:	xx/xx/xx	Exposure Category
Rev3:	xx/xx/xx	B
Pick Ticket:	---	Job No: ---
Sales No:	---	Acct No: ---

Hatch Legend	
	Attic Room
	Volume Ceiling
	Stick Framing

