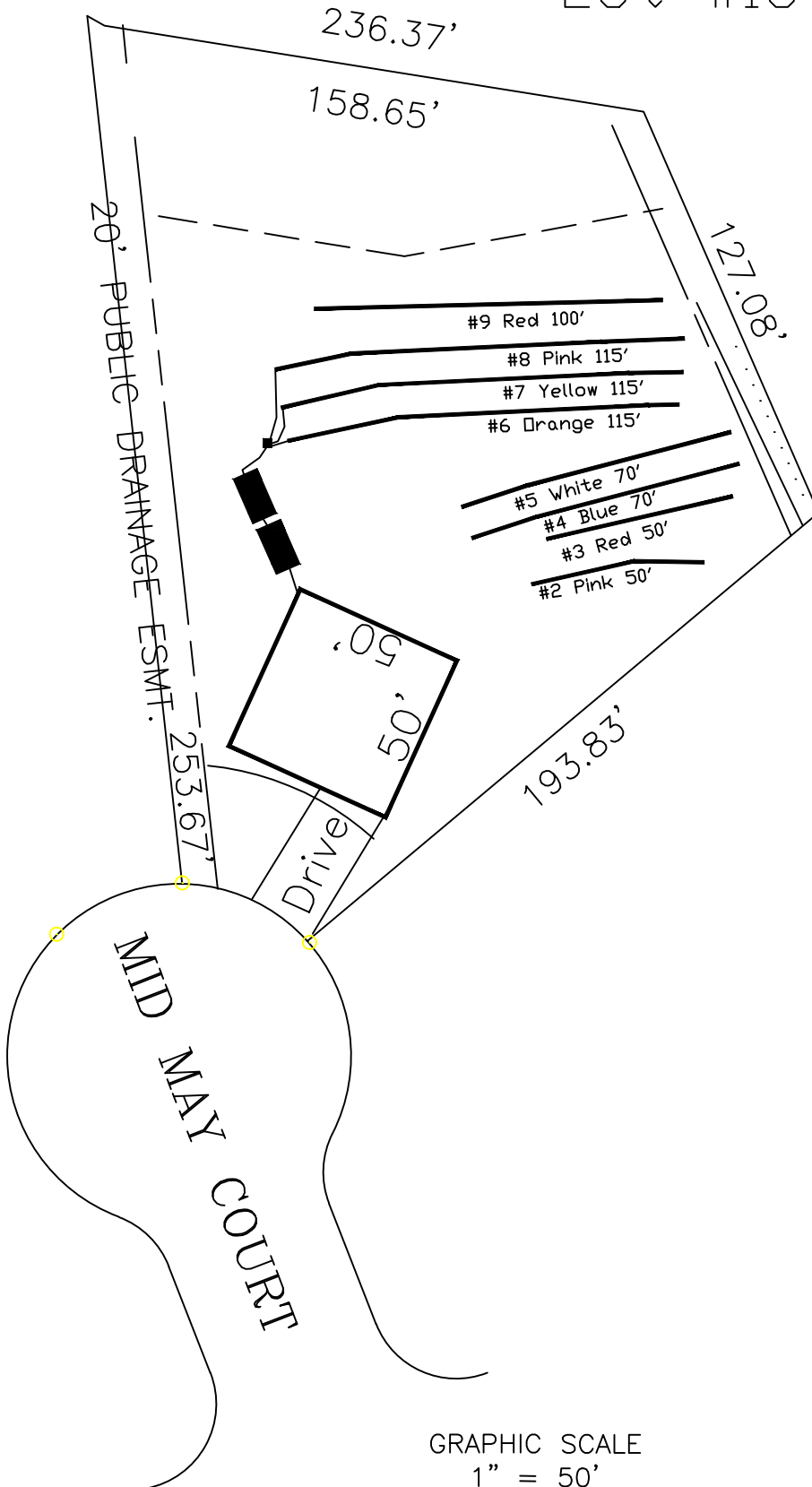


Highland Grove 4-Bedroom Septic Proposal Lot #16



16

36,721 SQ.FT.

This drawing represents a preliminary septic plan made prior to final construction activities. A revised plan may need to be reworked at time of permitting.

System: Pump to D-Box
 Lines: 6-8 (345')
 0.35 LTAR
 24" Trench Bottom
 Accepted Status System
 Repair: Pressure Manifold
 Lines: 2-5, 9 (340')
 0.35 LTAR
 24 Trench Bottom
 Accepted Status System

GRAPHIC SCALE
1" = 50'



Adams
Soil Consulting
919-414-6761
Job #561