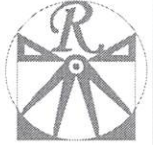


CSI

PLANS DESIGNED TO THE
2018 NORTH CAROLINA STATE
RESIDENTIAL BUILDING CODE.

GENERAL NOTES

1. ALL WORK SHALL BE PERFORMED IN ACCORDANCE WITH ALL APPLICABLE NATIONAL, STATE, AND LOCAL CODES AND REGULATIONS.
2. CONTRACTOR SHALL THOROUGHLY REVIEW ALL SHEETS IN PLAN SET AND VERIFY ALL DETAILS AND DIMENSIONS BEFORE BEGINNING CONSTRUCTION. ANY DISCREPANCIES SHALL BE REPORTED TO RENAISSANCE RESIDENTIAL DESIGN, INC. FOR JUSTIFICATION AND/OR CORRECTION BEFORE PROCEEDING WITH WORK. CONTRACTORS SHALL ASSUME RESPONSIBILITY FOR ERRORS THAT ARE NOT REPORTED PRIOR TO CONSTRUCTION.
3. ALL DIMENSIONS SHOULD BE READ OR CALCULATED AND NEVER SCALED.
4. CONTRACTOR SHALL ENSURE COMPATIBILITY OF THE BUILDING WITH ALL SITE REQUIREMENTS.



RENAISSANCE
RESIDENTIAL DESIGN, INC.

RALEIGH, NC 27612
919.684.4138
WWW.RENCAROLINA.COM

The art of transforming your vision into reality.

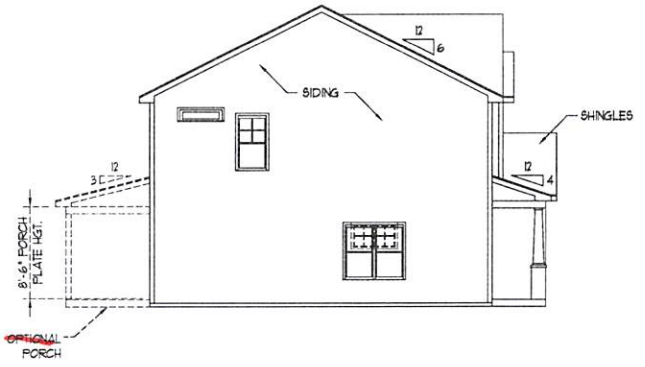
RENAISSANCE RESIDENTIAL DESIGN, INC. HEREBY EXPRESSLY DISCLAIMS ITS LIABILITY FOR ANY ERRORS OR OMISSIONS IN THESE PLANS. THE PLANS AND DIMENSIONS ARE NOT TO BE REPRODUCED, CHANGED, OR COPIED IN ANY FORM OR MANNER WITHOUT THE WRITTEN CONSENT OF RENAISSANCE RESIDENTIAL DESIGN, INC. AND ARE THE PROPERTY OF RENAISSANCE RESIDENTIAL DESIGN, INC. CONTRACTORS SHALL BE RESPONSIBLE FOR VERIFYING ALL DIMENSIONS AND CONDITIONS BEFORE BEGINNING CONSTRUCTION.

WEAVER
HOMES
1555 W. WILSON DRIVE • STATESVILLE, NC 28680
www.weaver-homes.com

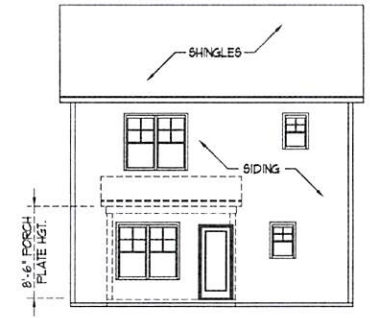


*Stained
Cedar - Elbow*

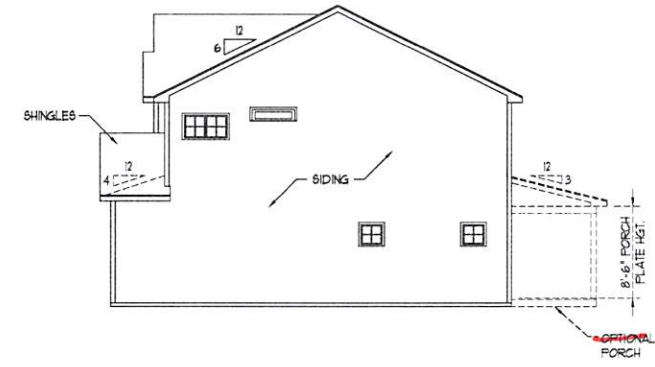
FRONT ELEVATION-C
SCALE: 1/4" = 1'-0"



LEFT ELEVATION
SCALE: 1/8" = 1'-0"



REAR ELEVATION
SCALE: 1/8" = 1'-0"



RIGHT ELEVATION
SCALE: 1/8" = 1'-0"

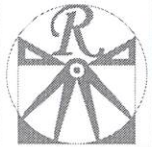
FILES FOR THE PLAN, SECTION, ELEVATION, AND OTHER DRAWINGS. CONTRACTOR SHALL VERIFY ALL DIMENSIONS AND CONDITIONS BEFORE BEGINNING CONSTRUCTION. ANY DISCREPANCIES SHALL BE REPORTED TO RENAISSANCE RESIDENTIAL DESIGN, INC. FOR JUSTIFICATION AND/OR CORRECTION BEFORE PROCEEDING WITH WORK. CONTRACTORS SHALL ASSUME RESPONSIBILITY FOR ERRORS THAT ARE NOT REPORTED PRIOR TO CONSTRUCTION.

WEAVER HOMES
CAROLINA COLLECTION
HICKORY

DATE: AUGUST 25, 2020
REV.
SCALE: 1/4" = 1'-0"
DRAWN BY: WJO
ENGINEERED BY:
REVIEWED BY:

C - ELEVATIONS

A-3



RENAISSANCE
RESIDENTIAL DESIGN, INC.

RALEIGH, NC 27612
919.848.4138
WWW.REDCAROLINA.COM

The art of transforming your vision into reality.

RENAISSANCE RESIDENTIAL DESIGN, INC.
RESERVES THE RIGHT TO MAKE
MODIFICATIONS TO FLOOR PLANS,
ELEVATIONS, MATERIALS AND
SPECIFICATIONS WITHOUT NOTICE
IF THESE CHANGES ARE FOR THE
PURPOSE OF COMPLYING AN
ARCHITECTURAL CODES ONLY.

RENAISSANCE RESIDENTIAL DESIGN, INC.
HEREBY EXPRESSLY DISCLAIMS ITS
COMMON LAW CONTRACT AND IMPLIED
PROPERTY RIGHTS IN THESE PLANS.
THESE PLANS AND DRAWINGS ARE NOT
TO BE REPRODUCED, CHANGED, OR
COPIED IN ANY FORM OR MANNER
WITHOUT FIRST OBTAINING THE EXPRESS
WRITTEN CONSENT OF RENAISSANCE
RESIDENTIAL DESIGN, INC. IN CASE
THEY ARE AMENDED TO ANY OTHER
PARTY WITHOUT FIRST OBTAINING
WRITTEN PERMISSION AND CONSENT.

**WEAVER
HOMES**
1550 Weaver Drive • Cary, NC 27513
919.848.2240 • 919.848.2240
WWW.WEAVERHOMES.COM

PLEASE PRINT OR PRINTED IN CAPITAL LETTERS. COPIES
OF THESE PLANS MAY BE MADE FOR PERSONAL USE ONLY.
NO PART OF THESE PLANS OR DRAWINGS IS TO BE
REPRODUCED, CHANGED, OR COPIED IN ANY FORM
OR MANNER WITHOUT THE WRITTEN CONSENT OF
RENAISSANCE RESIDENTIAL DESIGN, INC. IN CASE
THEY ARE AMENDED TO ANY OTHER PARTY
WITHOUT FIRST OBTAINING THE WRITTEN
CONSENT OF RENAISSANCE RESIDENTIAL DESIGN,
INC. IN CASE THEY ARE AMENDED TO ANY OTHER
PARTY WITHOUT FIRST OBTAINING WRITTEN
PERMISSION AND CONSENT.

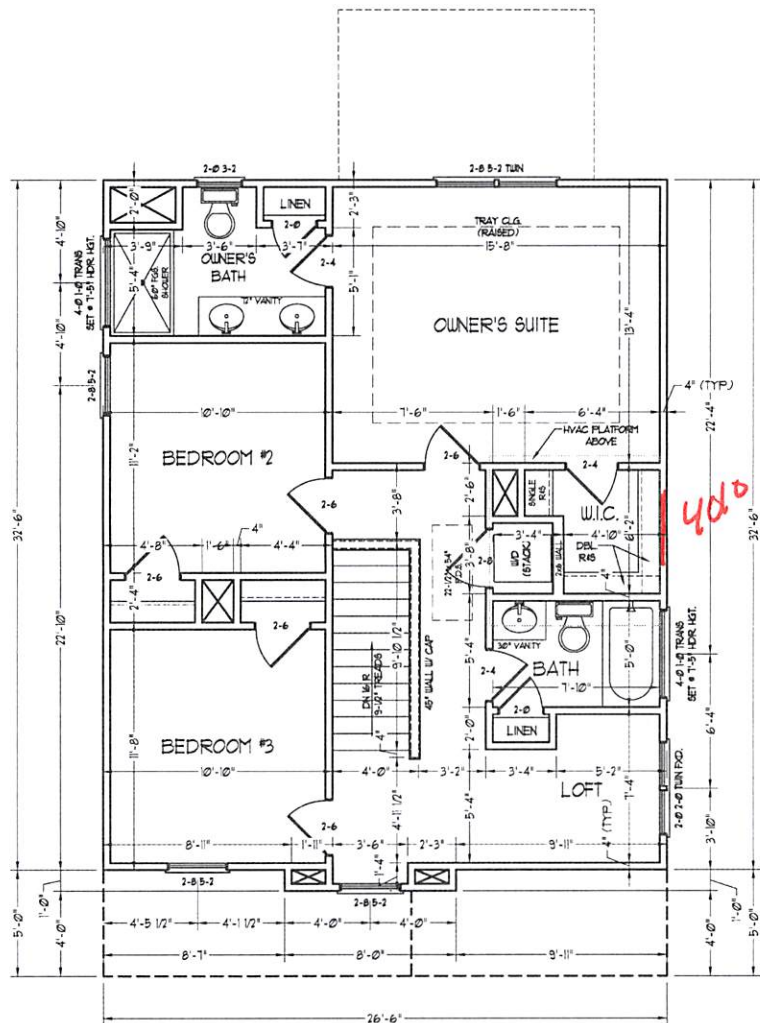
WEAVER HOMES
CAROLINA COLLECTION
HICKORY

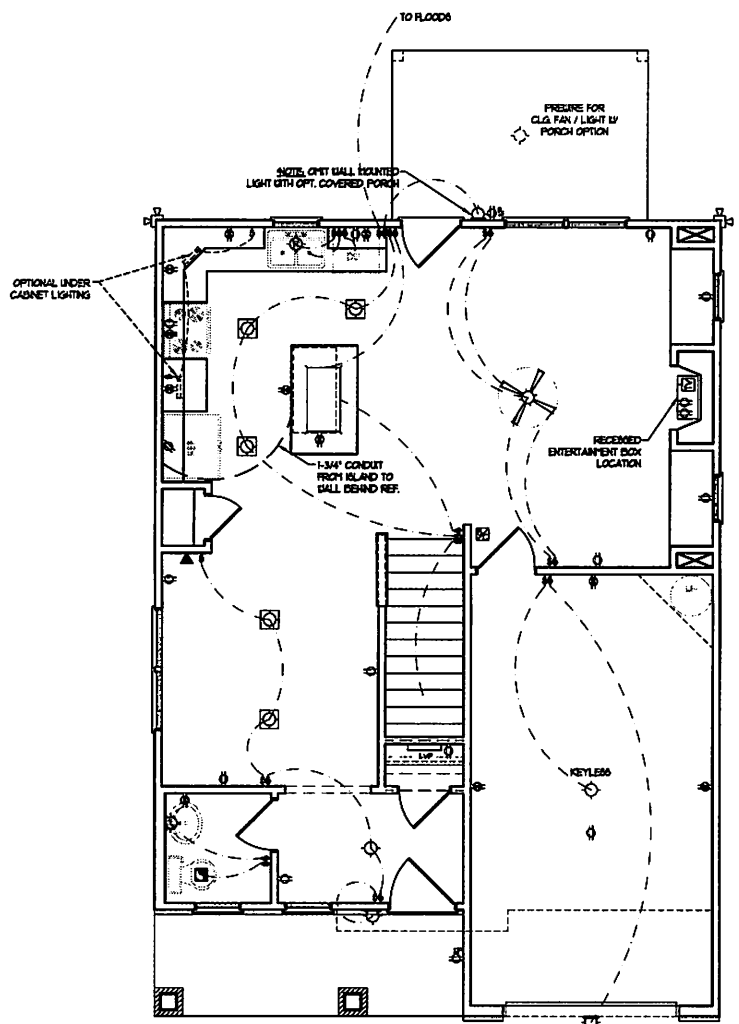
DATE	AUGUST 25, 2020
REV	
SCALE	1/4" = 1'-0"
DRAWN BY	WCO
ENGINEERED BY	
REVIEWED BY	

SECOND FLOOR
PLAN

A-5

SCALE NOTE: 18x24 PRINTS ARE
TO SCALE AS NOTED.
11x17 PRINTS ARE NOT TO SCALE



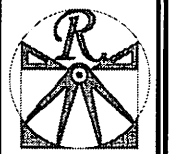


ELECTRICAL LAYOUT NOTES:

- 1) BLOCK AND LINE FOR ALL CEILING FANS PER PLAN
- 2) VANITY LIGHTS TO BE SET @ 90° AFF. (TYP)
- 3) ADDITIONAL EXTERIOR OUTLETS REQUIRED BY CODE TO BE LOCATED BY ELECTRICIAN
- 4) PLACE SWITCHES @ 10" FROM ROUGH OPENING.

- ELECTRICAL LEGEND**
- ⊖ 120 V OUTLET
 - ⊖ 120 V GFI OUTLET
 - ⊖ 120 V SWITCHED OUTLET
 - ⊖ 120 V BASEBOARD OUTLET
 - ⊖ 4-FLEX
 - ⊖ COUNTER OR FLOOR MOUNTED
 - ⊖ COUNTER OR FLOOR MOUNTED 120V GFI
 - ⊖ WEATHER-PROOF
 - ⊖ 220 V OUTLET
 - ⊖ 120 V DEDICATED CIRCUIT
 - ⊖ 220 V DEDICATED CIRCUIT
 - ⊖ SPECIAL PURPOSE (120 V, ETC.)
 - ⊖ WALL MOUNT LIGHT
 - ⊖ CEILING MOUNT LIGHT
 - ⊖ PENDANT LIGHT
 - ⊖ RECESSED CAN LIGHT
 - ⊖ NON CAN LIGHT
 - ⊖ EYE-BALL LIGHT
 - ⊖ FLUORESCENT LIGHT
 - ⊖ UNDERCABINET LIGHT
 - ⊖ FLOOD LIGHT
 - ⊖ SWITCH
 - ⊖ DIMMER SWITCH
 - ⊖ TELEPHONE
 - ⊖ DATA
 - ⊖ TELEPHONE AND DATA
 - ⊖ TV CONNECTION
 - ⊖ TV/ DATA
 - ⊖ CONDUIT FOR COMPONENT DRING
 - ⊖ SPEAKER
 - ⊖ 120 V SMOKE/ CO DETECTOR
 - ⊖ 120 V SMOKE DETECTOR
 - ⊖ EXHAUST FAN
 - ⊖ LOW VOLTAGE PANEL
 - ⊖ ALARM PANEL
 - ⊖ CEILING FAN
 - ⊖ CEILING FAN W/ LIGHT

SCALE NOTE: 18x24 PRINTS ARE TO SCALE AS NOTED. 11x17 PRINTS ARE NOT TO SCALE



RENAISSANCE
RESIDENTIAL DESIGN, INC.
RALEIGH, NC 27612
(919) 843-4128
WWW.RENDESIGN.COM

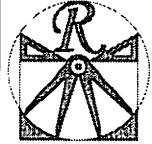
RENAISSANCE RESIDENTIAL DESIGN, INC. IS AN EQUAL OPPORTUNITY EMPLOYER. ANY DISCRIMINATION IN THESE PLANS, SPECIFICATIONS, CONTRACTS, OR AGREEMENTS WILL BE PROSECUTED TO THE FULL EXTENT OF THE LAW. THE CLIENT AGREES TO HOLD RENDESIGN, INC. HARMLESS FROM ALL LIABILITY ARISING FROM THE USE OF THESE PLANS, SPECIFICATIONS, CONTRACTS, OR AGREEMENTS. RENDESIGN, INC. IS NOT RESPONSIBLE FOR ANY DAMAGE TO PERSONS OR PROPERTY ARISING FROM THE USE OF THESE PLANS, SPECIFICATIONS, CONTRACTS, OR AGREEMENTS. RENDESIGN, INC. IS NOT RESPONSIBLE FOR ANY DAMAGE TO PERSONS OR PROPERTY ARISING FROM THE USE OF THESE PLANS, SPECIFICATIONS, CONTRACTS, OR AGREEMENTS.

WEAVER
HOMES
1315 W. WOODBINE AVENUE
HICKORY, NC 28633
704.326.1111

WEAVER HOMES
CAROLINA COLLECTION
HICKORY

DATE: AUGUST 25, 2020
REV:
SCALE: 1/4" = 1'-0"
DRAWN BY: WCI
ENGINEERED BY:
REVIEWED BY:
FIRST FLOOR
ELECTRICAL
PLAN

E-1



RENAISSANCE
RESIDENTIAL DESIGN, INC.
RALEIGH, NC 27612
(919) 568-4128
WWW.RENDESIGN.COM

The art of transforming your vision into reality.

RENAISSANCE RESIDENTIAL DESIGN, INC. RESERVES THE RIGHT TO MAKE MODIFICATIONS TO ANY DESIGN OR SPECIFICATIONS WITHOUT NOTICE. THE CLIENT AGREES TO HOLD RENDESIGN, INC. HARMLESS FROM ANY AND ALL CLAIMS, DAMAGES, LOSSES AND EXPENSES, INCLUDING REASONABLE ATTORNEY'S FEES, ARISING FROM ANY AND ALL SUCH CLAIMS, DAMAGES, LOSSES AND EXPENSES.

RENAISSANCE RESIDENTIAL DESIGN, INC. HEREBY DISCLAIMS ANY AND ALL WARRANTIES, EXPRESS OR IMPLIED, INCLUDING BUT NOT LIMITED TO THE WARRANTIES OF MERCHANTABILITY AND FITNESS FOR A PARTICULAR PURPOSE. THE CLIENT AGREES TO HOLD RENDESIGN, INC. HARMLESS FROM ANY AND ALL CLAIMS, DAMAGES, LOSSES AND EXPENSES, INCLUDING REASONABLE ATTORNEY'S FEES, ARISING FROM ANY AND ALL SUCH CLAIMS, DAMAGES, LOSSES AND EXPENSES.

WEAVER
HOMES
— CAROLINA COLLECTION —
HICKORY
5500 W. WOODBRIDGE DRIVE, SUITE 100, RALEIGH, NC 27617
WWW.WEAVERHOMES.COM

THIS ELECTRICAL PLAN IS A PROFESSIONAL SERVICE PROVIDED BY RENDESIGN, INC. IT IS THE PROPERTY OF RENDESIGN, INC. AND IS NOT TO BE REPRODUCED OR TRANSMITTED IN ANY FORM OR BY ANY MEANS, ELECTRONIC OR MECHANICAL, INCLUDING PHOTOCOPYING, RECORDING, OR BY ANY INFORMATION STORAGE AND RETRIEVAL SYSTEM. ANY UNAUTHORIZED REPRODUCTION OR TRANSMISSION OF THIS PLAN IS STRICTLY PROHIBITED. RENDESIGN, INC. SHALL BE RESPONSIBLE FOR ANY AND ALL CLAIMS, DAMAGES, LOSSES AND EXPENSES, INCLUDING REASONABLE ATTORNEY'S FEES, ARISING FROM ANY AND ALL SUCH CLAIMS, DAMAGES, LOSSES AND EXPENSES.

WEAVER HOMES
CAROLINA COLLECTION
HICKORY

DATE: AUGUST 25, 2020
REV: _____
SCALE: 1/4" = 1'-0"
DRAWN BY: WO
ENGINEERED BY: _____
REVIEWED BY: _____

SECOND FLOOR
ELECTRICAL
PLAN

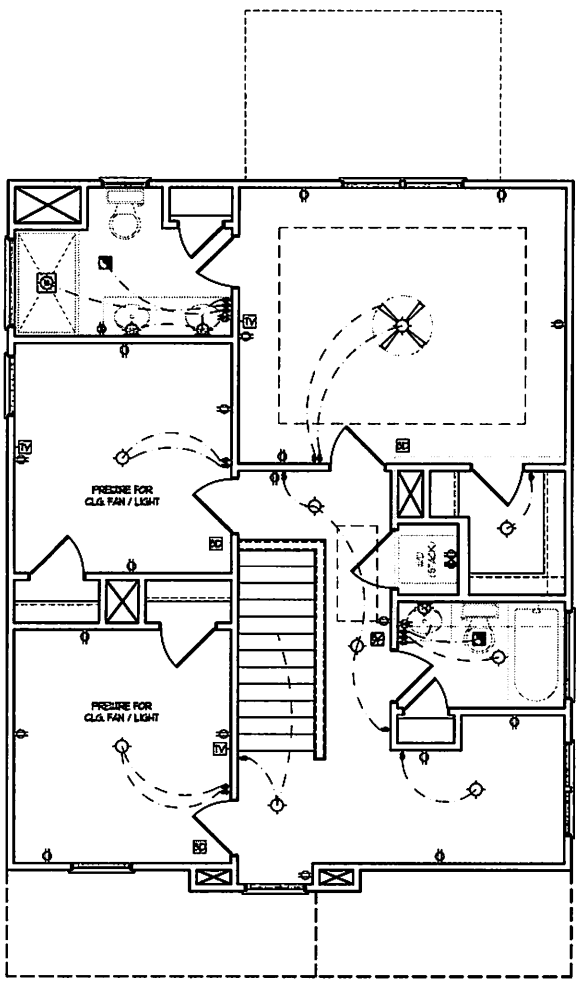
E-2

ELECTRICAL LAYOUT NOTES:

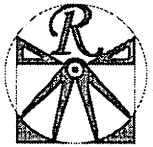
- 1) BLOCK AND WIRE FOR ALL CEILING FANS PER PLAN.
- 2) VANITY LIGHTS TO BE SET @ 50" AFF. (TYP.)
- 3) ADDITIONAL EXTERIOR OUTLETS REQUIRED BY CODE TO BE LOCATED BY ELECTRICIAN.
- 4) PLACE SWITCHES 18" MIN FROM ROUGH OPENINGS.

ELECTRICAL LEGEND

- ⊕ 120 V OUTLET
- ⊕ 120 V GFI OUTLET
- ⊕ 120 V SWITCHED OUTLET
- ⊕ 120 V BASEBOARD OUTLET
- ⊕ 4-FLEX
- ⊕ COUNTER OR FLOOR MOUNTED
- ⊕ COUNTER OR FLOOR MOUNTED 120V GFI
- ⊕ WEATHER-PROOF
- ⊕ 220 V OUTLET
- ⊕ 120 V DEDICATED CIRCUIT
- ⊕ 220 V DEDICATED CIRCUIT
- ⊕ SPECIAL PURPOSE (240 V, ETC.)
- ⊕ HALL MOUNT LIGHT
- ⊕ CEILING MOUNT LIGHT
- ⊕ PENDANT LIGHT
- ⊕ RECESSED CAN LIGHT
- ⊕ MINI CAN LIGHT
- ⊕ EYEBALL LIGHT
- ⊕ FLUORESCENT LIGHT
- ⊕ UNDERCABINET LIGHT
- ⊕ FLOOD LIGHT
- ⊕ SWITCH
- ⊕ DIMMER SWITCH
- ⊕ TELEPHONE
- ⊕ DATA
- ⊕ TELEPHONE AND DATA
- ⊕ TV CONNECTION
- ⊕ TV/ DATA
- ⊕ CONDUIT FOR COMPONENT WIRING
- ⊕ SPEAKER
- ⊕ 120 V SMOKE/ CO DETECTOR
- ⊕ 120 V SMOKE DETECTOR
- ⊕ EXHAUST FAN
- ⊕ LOW VOLTAGE PANEL
- ⊕ ALARM PANEL
- ⊕ CEILING FAN
- ⊕ CEILING FAN W/ LIGHT



SCALE NOTE: 18x24 PRINTS ARE TO SCALE AS NOTED.
11x17 PRINTS ARE NOT TO SCALE



RENAISSANCE
RESIDENTIAL DESIGN, INC.
RALEIGH, NC 27612
(919) 844-4128
WWW.RENCAROLINA.COM

The art of transferring your vision into reality.

RENAISSANCE RESIDENTIAL DESIGN, INC. HAS THE RIGHT TO REPRODUCE OR TRANSMIT THIS INFORMATION IN ANY MANNER AND FOR ANY PURPOSES WITHOUT NOTICE. THE INFORMATION AND FOR THE PURPOSES OF THESE TERMS ARE PROVIDED AS IS AND WITHOUT WARRANTY OF ANY KIND. RENAISSANCE RESIDENTIAL DESIGN, INC. HAS THE RIGHT TO REPRODUCE OR TRANSMIT THIS INFORMATION IN ANY MANNER AND FOR ANY PURPOSES WITHOUT NOTICE. THE INFORMATION AND FOR THE PURPOSES OF THESE TERMS ARE PROVIDED AS IS AND WITHOUT WARRANTY OF ANY KIND.

WEAVER
HOMES
3150 Weaver Drive • Raleigh, NC 27612
www.weaverhomes.com

PLEASE PRINT WITH ALL INFORMATION ON THIS DRAWING. ANY CHANGES TO THIS DRAWING MUST BE APPROVED BY THE ARCHITECT. THE ARCHITECT'S OFFICE SHALL BE RESPONSIBLE FOR THE ACCURACY OF ALL INFORMATION PROVIDED ON THIS DRAWING. THE ARCHITECT'S OFFICE SHALL NOT BE RESPONSIBLE FOR THE ACCURACY OF ANY INFORMATION PROVIDED BY OTHER SOURCES. THE ARCHITECT'S OFFICE SHALL NOT BE RESPONSIBLE FOR THE ACCURACY OF ANY INFORMATION PROVIDED BY OTHER SOURCES.

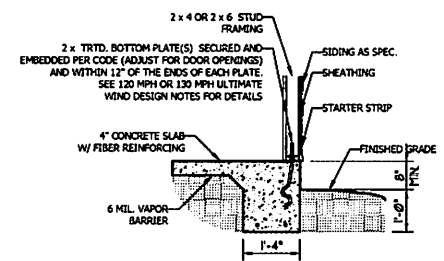
WEAVER HOMES
CAROLINA COLLECTION
HICKORY

DATE: AUGUST 25, 2020
REV
SCALE: 1/4" = 1'-0"
DRAWN BY: WJO
ENGINEERED BY:
REVIEWED BY:
MONOSLAB
FOUNDATION
PLAN

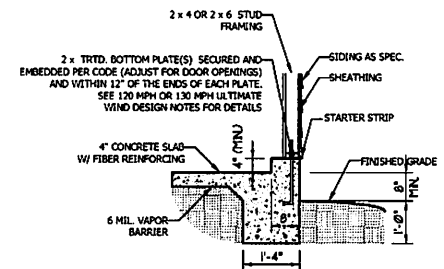
S-1

ULTIMATE DESIGN WIND SPEED NOTES FOR LESS THAN 30' MEAN ROOF HEIGHT:

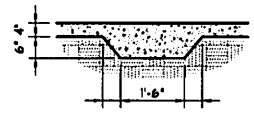
1. STRUCTURAL DESIGN PER NORTH CAROLINA RESIDENTIAL CODE, 2018 EDITION.
2. FOR 120 MPH WIND ZONES INSTALL 1/2" ANCHOR BOLTS 4'-0" O.C. AND WITHIN 1'-0" FROM END OF EACH CORNER. ANCHOR BOLTS MUST EXTEND A MINIMUM OF 7" INTO CONCRETE OR 15" INTO MASONRY. LOCATE BOLT WITHIN MIDDLE THIRD OF PLATE WIDTH.
3. FOR 130 MPH WIND ZONES INSTALL 1/2" ANCHOR BOLTS 4'-0" O.C. AND WITHIN 1'-0" FROM END OF EACH CORNER. ANCHOR BOLTS MUST EXTEND A MINIMUM OF 7" INTO CONCRETE OR 15" INTO MASONRY. LOCATE BOLT WITHIN MIDDLE THIRD OF PLATE WIDTH.
4. MEAN ROOF HEIGHT IS LESS THAN 30 FEET.
5. EXTERIOR WALLS DESIGNED FOR 120 OR 130 MPH WINDS.
6. INSTALL 7/16" OSB SHEATHING ON ALL EXTERIOR WALLS OF ALL STORIES IN ACCORDANCE WITH SECTION R602.10.3 OF THE IRC, 2018 EDITION.
7. ENERGY EFFICIENCY COMPLIANCE AND INSULATION VALUES OF THE BUILDING TO BE IN ACCORDANCE WITH CHAPTER 11 OF THE NCRC, 2018 EDITION.



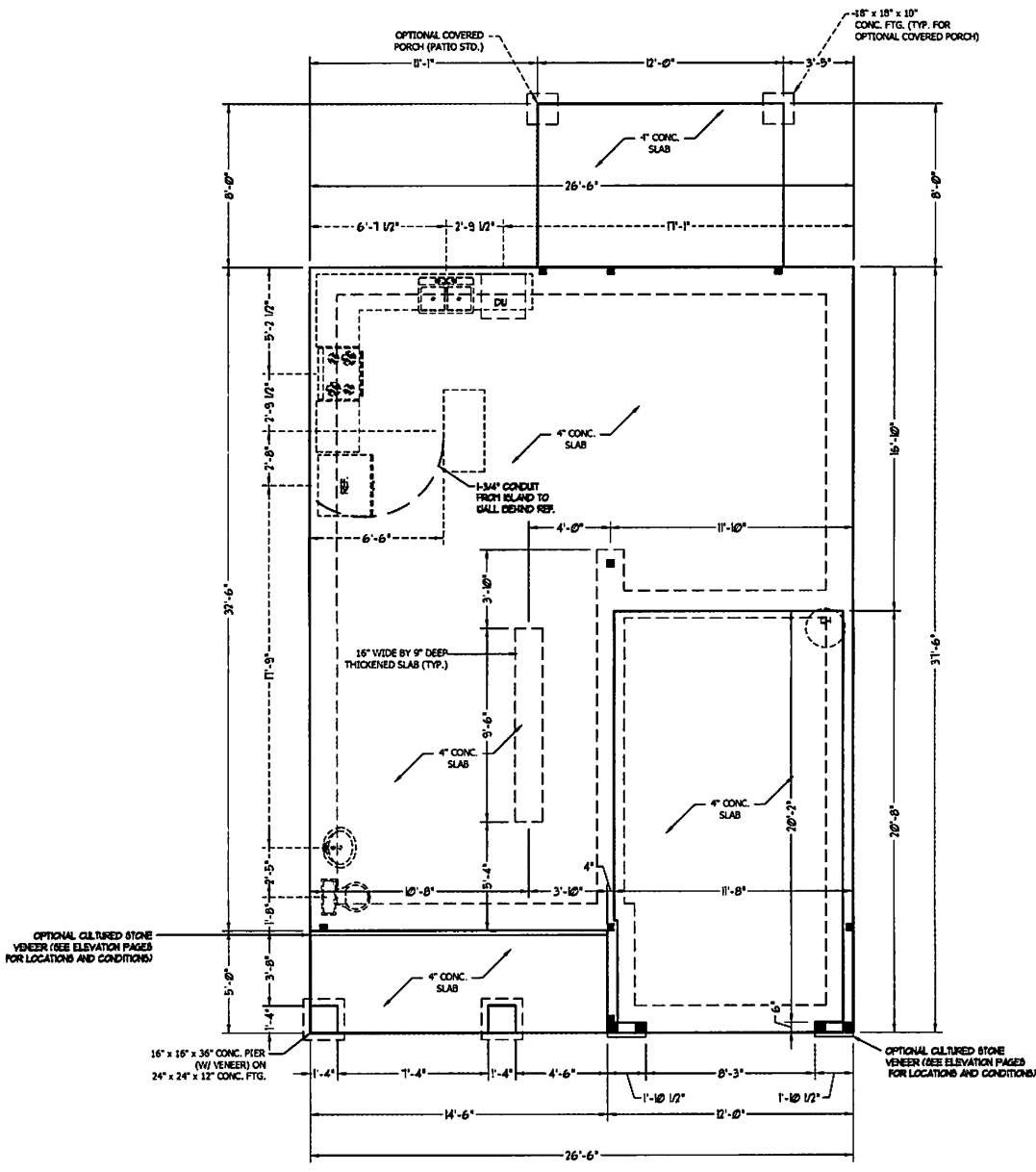
TYPICAL SLAB DETAIL



GARAGE CURB DETAIL



THICKENED SLAB DETAIL



SCALE NOTE: 18x24 PRINTS ARE TO SCALE AS NOTED.
11x17 PRINTS ARE NOT TO SCALE