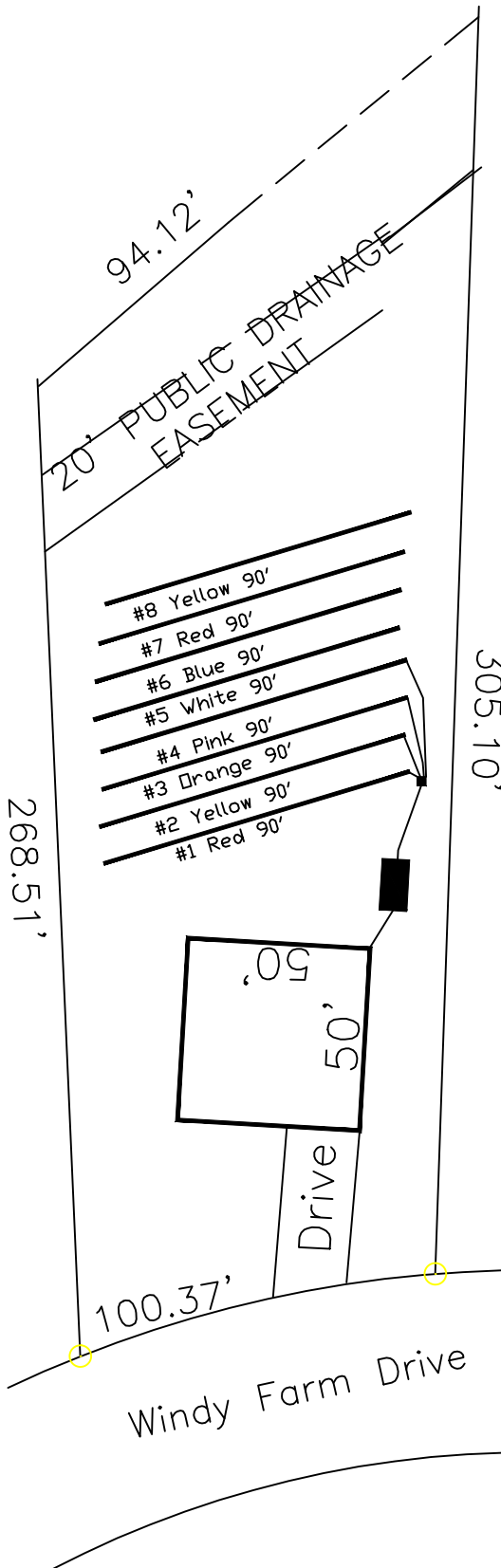


# Highland Grove 4-Bedroom Septic Proposal Lot #5

⑤

31,322 SQ.FT.



This drawing represents a preliminary septic plan made prior to final construction activities. A revised plan may need to be reworked at time of permitting.

\*If plumbing is not sufficient a separate pump and tank may be required.

System: Gravity to D-Box  
 Lines: 1-4 (360')  
 0.35 LTAR  
 24" Trench Bottom  
 Accepted Status System  
 Repair: Gravity to D-Box.  
 Lines: 5-8 (360')  
 0.35 LTAR  
 24 Trench Bottom  
 Accepted Status System

Adams  
 Soil Consulting  
 919-414-6761  
 Job #561