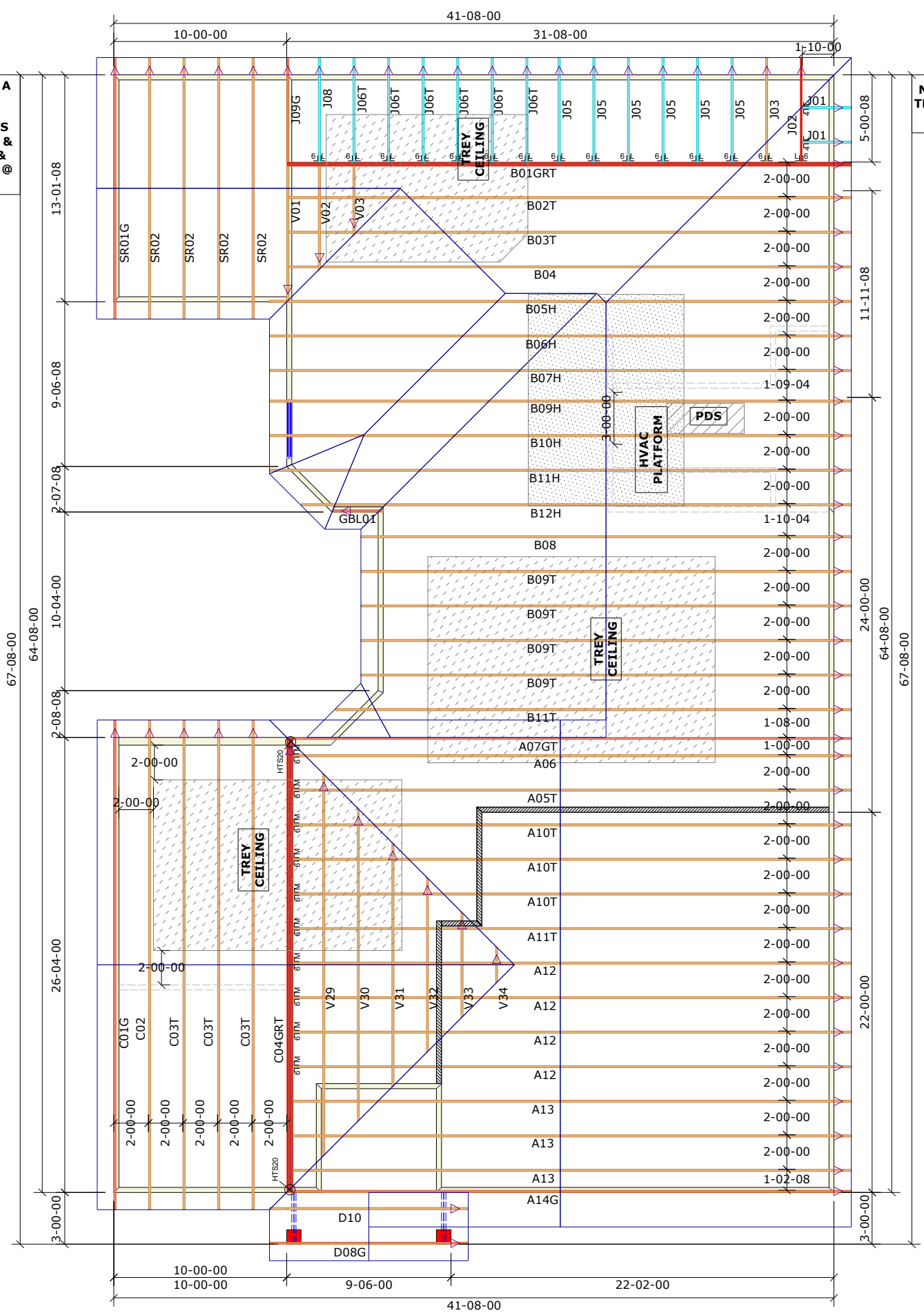


SPACE TRUSSES 2' O.C. UNLESS A WIDE P.D.S. IS GOING TO BE INSTALLED. IF WIDE P.D.S. IS USED, FOLLOW SPEDCIAL TRUSS SPACING AS NOTED ON LAYOUT & ATTACH 2X4 LEDGERS TO TOP & BOTTOM CHORDS W/ 12d NAILS @ 16" O.C.

NOTE: LEFT END OF TRUSS AS SHOWN ON TRUSS DETAIL DRAWINGS ARE INDICATED ON LAYOUT BY TRIANGLE ICONS

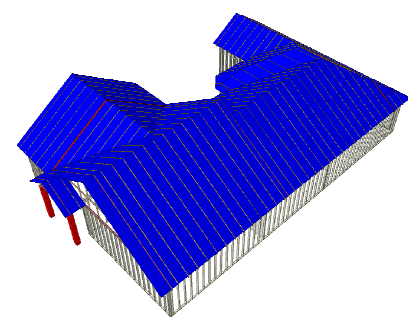


**General Notes:**  
 - Per ANSI/TPI 1-2002 all "Truss to Wall" connections are the responsibility of the Building Designer, not the Truss Manufacturer.  
 - Dimensions are Feet-Inches- Sixteenths.  
 - Trusses are to be 24" o.c. unless noted otherwise (U.N.O.)  
 - Trusses are not designed to support brick U.N.O.  
 - Do not cut or modify trusses without first contacting Builders FirstSource.  
 - Immediately contact Builders FirstSource if trusses are damaged.

**Connection Notes:**  
 - All hangers are to be Simpson or equivalent U.N.O.  
 - Use Manufacturer's specifications for all hanger connections U.N.O.  
 - Use 10d x 1 1/2" Nails in hanger connections to single ply roof girder trusses.

**Floor Notes:**  
 - Shift truss as required to avoid plumbing traps.  
 - Installation Contractor and/or Field Supervisor are to verify all dimensions, trap locations, and options prior to installation

**Dimension Notes:**  
 - Drawing not to scale. Do not scale dimensions



Hanger List		All Tie Downs H2.5T Unless noted	
2	LUS24	U14	
15	LUS26	U16	
10	HTU26	M16	
2	HTS20		

Special Items List	

Misc Material	

McKee	
Palazzo	Elev: Craftsman
Anderson Creek/88 Glenwood Ct	
Cumberland	NC Lot: 1012
Appwright #	
Permit	
Code: IRC 2015	
Loading:	
T.C.L.L.	20
T.C.D.L.	10
B.C.L.L.	0
B.C.D.L.	10

Revision History		Wind:	
Rev1:	xx/xx/xx	M.P.H.	130
Rev2:	xx/xx/xx	Exposure Category	
Rev3:	xx/xx/xx	B (Wooded areas/other)	
Pick Ticket:	---	Job No:	---
Sales No:	---	Acct No:	---

Hatch Legend	
	Attic Room
	Volume Ceiling
	Stick Framing