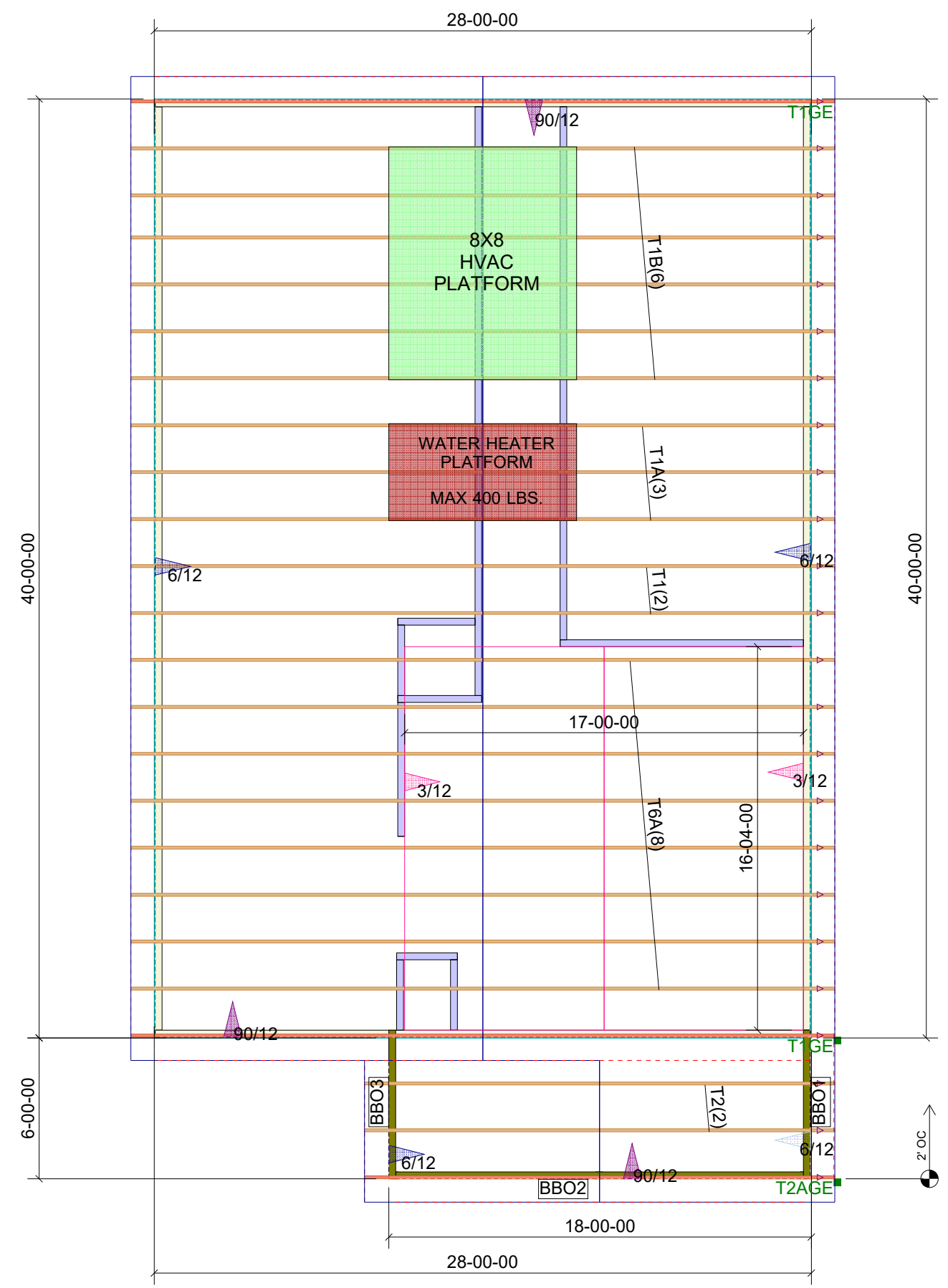


THIS LAYOUT IS TO BE USED AS A TRUSS PLACEMENT GUIDE ONLY.
 PLEASE REFER TO BUILDING PLANS FOR BUILDING CONSTRUCTION AND DETAILS,
 SUCH AS PLUMBING OR DUCT DROPS.

CONSTRUCTION COPY-
 FOR FIELD USE



**BENTLEY 2020
 ROOF TRUSSES
 2' OC, 1'-1/2" Overhang**

- Notes:
- Exterior dimensions shown are assumed to be:
 - ☐ Out-to-out of stud
 - ☒ Out-to-out of sheathing
 - Adjust truss locations as needed for plumbing and mechanical clearance. Unless otherwise noted, trusses may be shifted as long as O.C. spacing shown is not exceeded.
 - Do not cut, drill, or otherwise damage any part of any truss without prior approval from Peak Truss.
 - Do not approve drawings if any information herein is unclear. Once ordered trusses will be fabricated as approved.
 - Please contact Peak Truss Builders with any questions. We are available to help any way we can. We can be reached at 919-545-5555 or sales@peaktruss.com

Roof Truss Loading per 2012 NC Residential Code

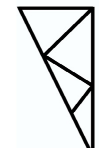
Top Chord Live Load	20# PSF
Top Chord Dead Load	10# PSF
Bottom Chord Live Load	0# PSF
Bottom Chord Dead Load	10# PSF

Trusses are designed for additional storage load wherever a 42"x24" box will fit between the webs.

- △ - This symbol denotes left end of truss as shown on truss drawings
- - Approximate location of toilet drop. Builder please confirm.

Truss connections by others:

- Ⓝ - Nailed
- Ⓛ - Ledger

Job #	P-6558
Bentley 2020 315 Burroughs Rd Holly Ridge NC	
Date Quoted:	1/29/2020 12:00:00 AM
Designer:	Sarah Billings
Herring Construction	
 Peak Truss Builders, LLC PO Box 340, New Hill, NC 27562	