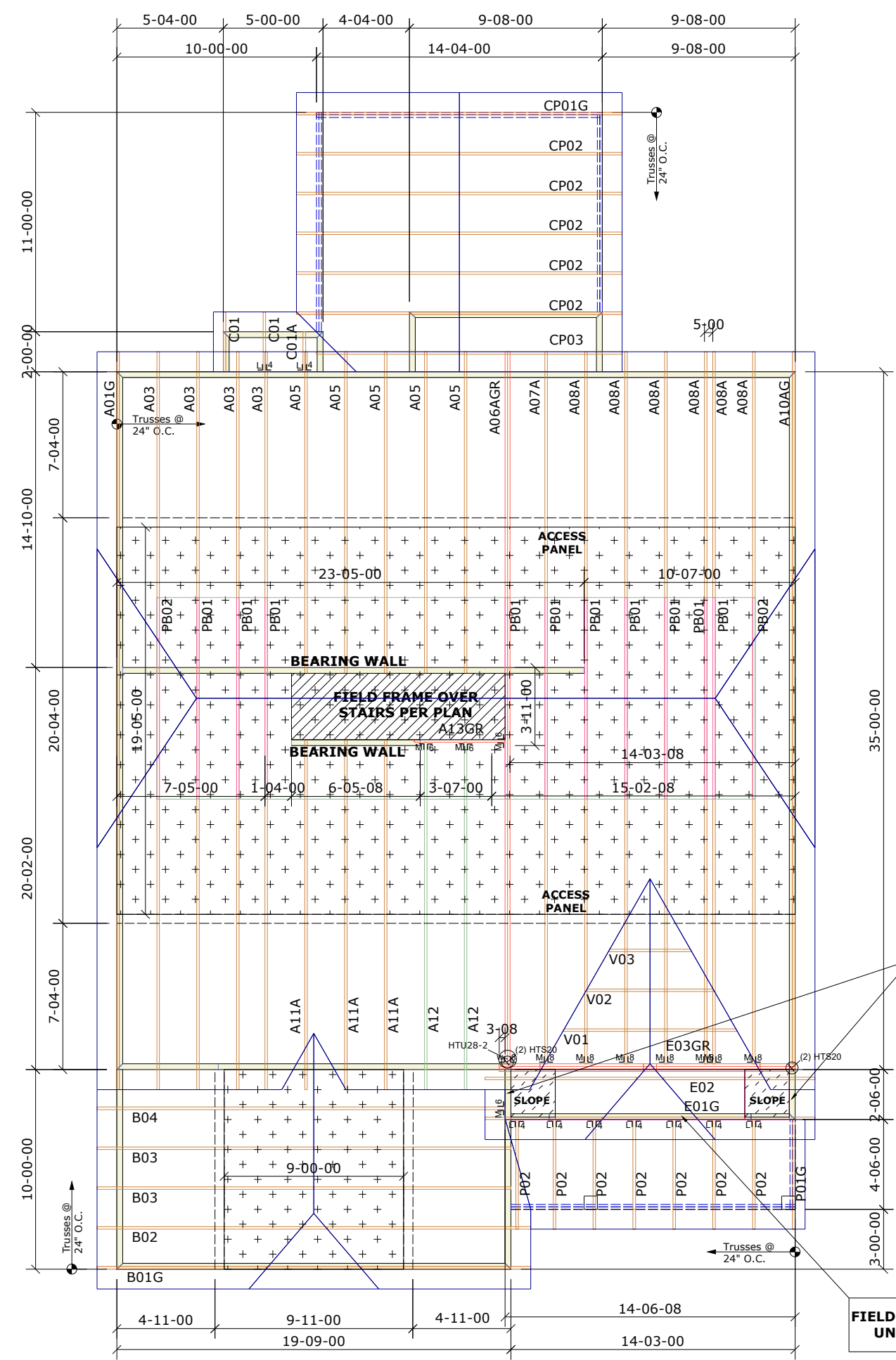


General Notes:
 - Per ANSI/TPI 1-2002 all " Truss to Wall" connections are the responsibility of the Building Designer, not the Truss Manufacturer.
 - Dimensions are Feet-Inches- Sixteenths.
 - Trusses are to be 24" o.c. unless noted otherwise (U.N.O.)
 - Trusses are not designed to support brick U.N.O.
 - Do not cut or modify trusses without first contacting Builders FirstSource.
 - Immediately contact Builders FirstSource if trusses are damaged.

Connection Notes:
 - All hangers are to be Simpson or equivalent U.N.O.
 - Use Manufacturer's specifications for all hanger connections U.N.O.
 - Use 10d x 1 1/2" Nails in hanger connections to single ply floor girder trusses.

Floor Notes:
 - Shift truss as required to avoid plumbing traps.
 - Installation Contractor and/or Field Supervisor are to verify all dimensions, trap locations, and options prior to installation

Dimension Notes:
 - Drawing not to scale. Do not scale dimensions



FRAME WALL TO 5'-6-5/16" A.F.F

FIELD/BALLOON FRAME GABLE WALL TO UNDERSIDE OF E01G GABLE TRUSS

Hanger List		All Tie Downs H2.5A Unless noted	
9	LUS24	U14	
4	HTU26	M18	
7	HTU28	M18	
1	HTU28-2	M18	
4	HTS20		

Special Items List	

Misc Material	

MCKEE HOMES		
FINLEY	Elev:	EURO
ANDERSON CREEK ACADEMY		
NC	Lot:	1129
Appwright #		

Code: IRC 2015		
Loading:		
T.C.L.L.	20.0 lb/ft2	
T.C.D.L.	10.0 lb/ft2	
B.C.L.L.	0.0 lb/ft2	
B.C.D.L.	10.0 lb/ft2	

Revision History		Wind:	
Rev1:	xx/xx/xx	M.P.H.	130
Rev2:	xx/xx/xx	Exposure Category	
Rev3:	xx/xx/xx	B	
Pick Ticket:	---	Job No:	---
Sales No:	---	Acct No:	---

Hatch Legend	
	Attic Room
	Volume Ceiling
	Stick Framing

