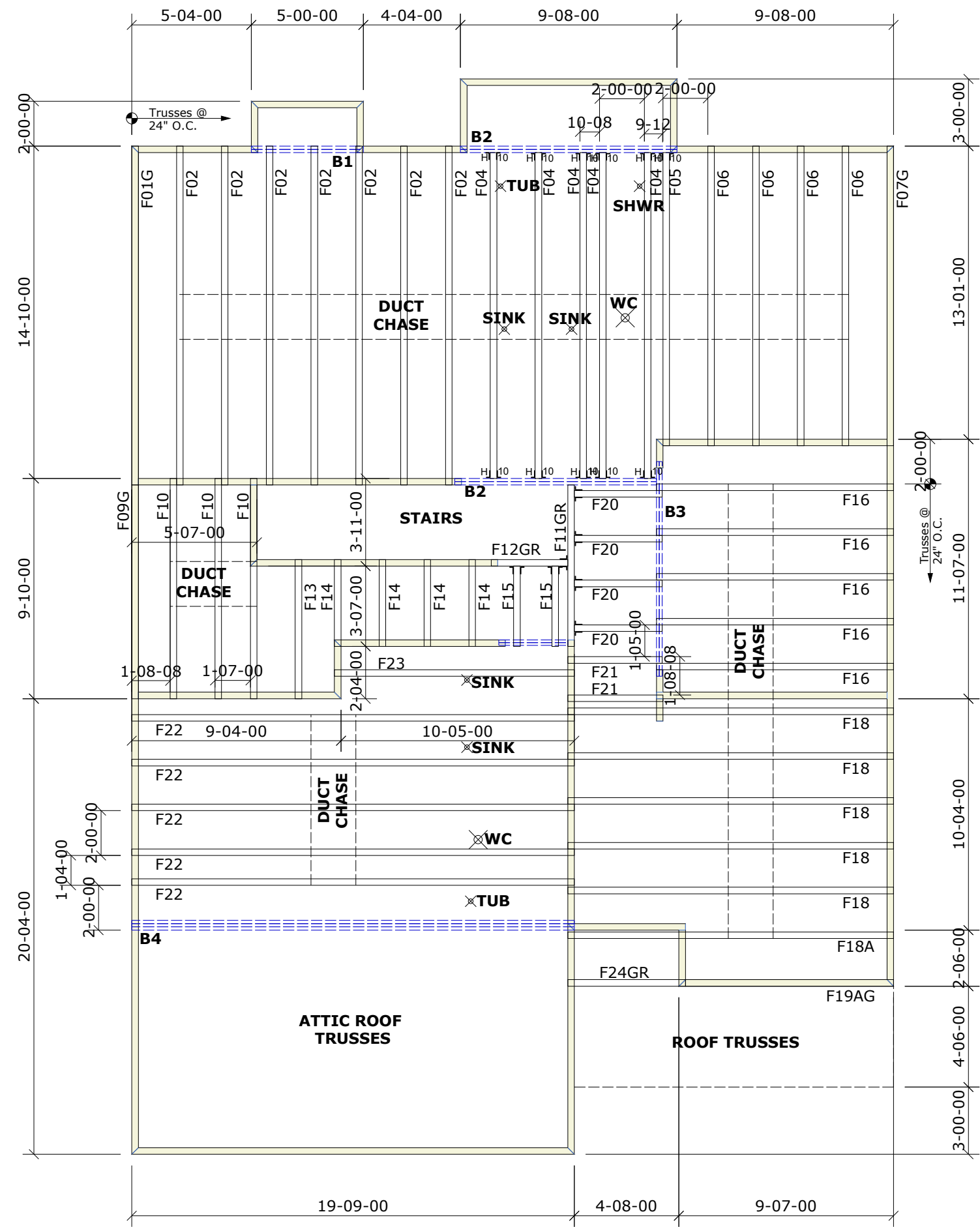


General Notes:
 - Per ANSI/TPI 1-2002 all "Truss to Wall" connections are the responsibility of the Building Designer, not the Truss Manufacturer.
 - Dimensions are Feet-Inches- Sixteenths.
 - Trusses are to be 24" o.c. unless noted otherwise (U.N.O.)
 - Trusses are not designed to support brick U.N.O.
 - Do not cut or modify trusses without first contacting Builders FirstSource.
 - Immediately contact Builders FirstSource if trusses are damaged.

Connection Notes:
 - All hangers are to be Simpson or equivalent U.N.O.
 - Use Manufacturer's specifications for all hanger connections U.N.O.
 - Use 10d x 1 1/2" Nails in hanger connections to single ply roof girder trusses.

Floor Notes:
 - Shift truss as required to avoid plumbing traps.
 - Installation Contractor and/or Field Supervisor are to verify all dimensions, trap locations, and options prior to installation

Dimension Notes:
 - Drawing not to scale. Do not scale dimensions



Hanger List		All Tie Downs H2.5A Unless noted	
7	THA422	J L	
11	HHUS410	H ₅ 00	

Beam List	
B1	(2-PLY) 1-3/4" X 9-1/4" X 6'-0"
B2	(2-PLY) 1-3/4" X 14" X 10'-0"
B3	(2-PLY) 1-3/4" X 9-1/4" X 10'-0"
B4	(3-PLY) 1-3/4" X 18" X 20'-0"

MCKEE HOMES		
FINLEY	Elev:	EURO
ANDERSON CREEK ACADEMY		
NC	Lot:	1129

2ND FLOOR	Appwright #	

	Code:	IRC 2015

Designed By:	MWA	T.C.D.L.	10.0 lb/ft2
Layout:	FINLEY	B.C.D.L.	0.0 lb/ft2
L/O Date:	02/02/2021	B.C.D.L.	5.0 lb/ft2

Revision History		Wind:	
Rev1:	xx/xx/xx	M.P.H.	
Rev2:	xx/xx/xx	Exposure Category	
Rev3:	xx/xx/xx		

Pick Ticket:	---	Job No.:	---
Sales No.:	---	Acct No.:	---

Hatch Legend	
	Attic Room
	Volume Ceiling
	Stick Framing

