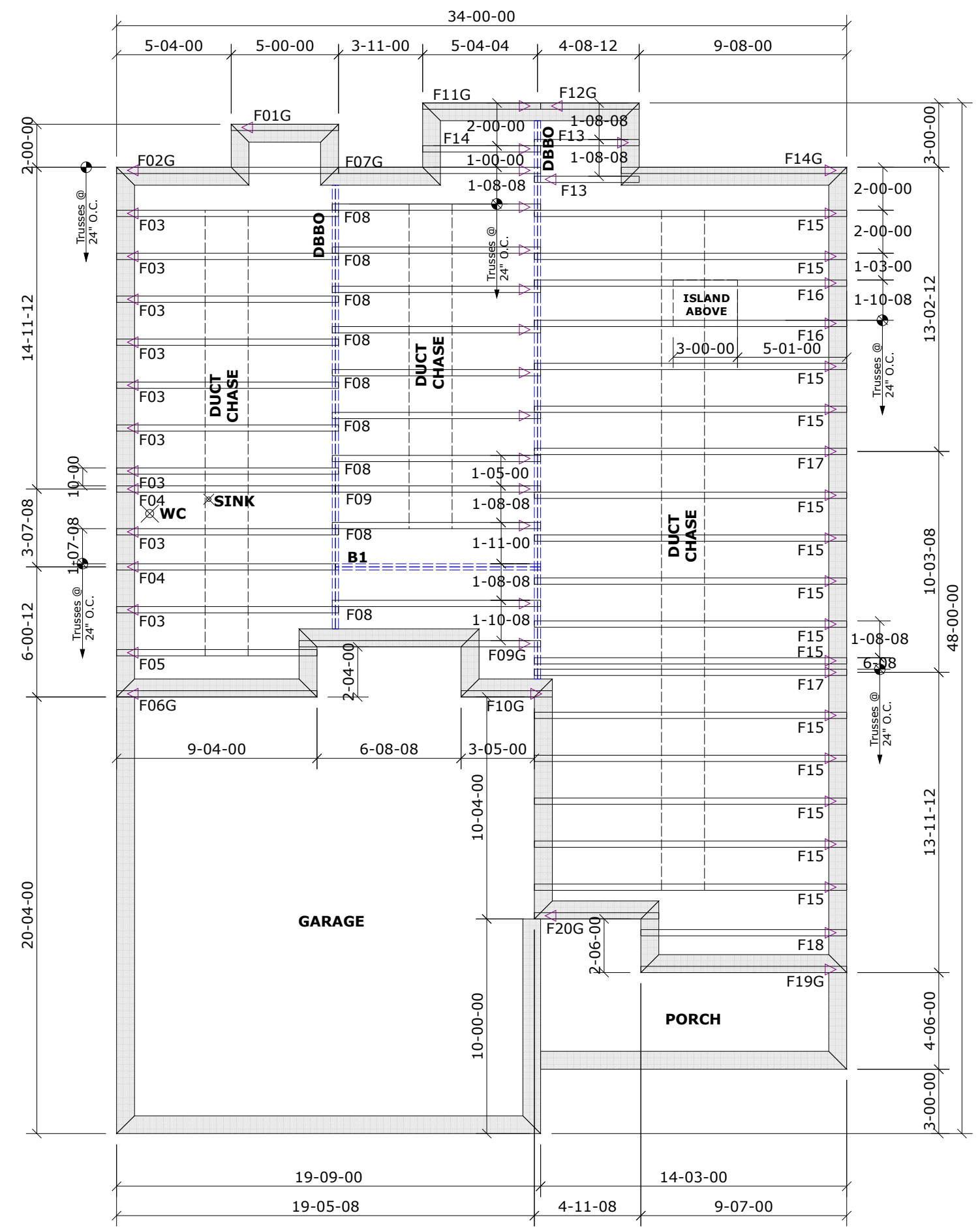


General Notes:
 - Per ANSI/TPI 1-2002 all " Truss to Wall" connections are the responsibility of the Building Designer, not the Truss Manufacturer.
 - Dimensions are Feet-Inches- Sixteenths.
 - Trusses are to be 24" o.c. unless noted otherwise (U.N.O.)
 - Trusses are not designed to support brick U.N.O.
 - Do not cut or modify trusses without first contacting Builders FirstSource.
 - Immediately contact Builders FirstSource if trusses are damaged.

Connection Notes:
 - All hangers are to be Simpson or equivalent U.N.O.
 - Use Manufacturer's specifications for all hanger connections U.N.O.
 - Use 10d x 1 1/2" Nails in hanger connections to single ply roof girder trusses.

Floor Notes:
 - Shift truss as required to avoid plumbing traps.
 - Installation Contractor and/or Field Supervisor are to verify all dimensions, trap locations, and options prior to installation

Dimension Notes:
 - Drawing not to scale. Do not scale dimensions



Hanger List	All Tie Downs H2.5A Unless noted
Beam List	
B1	(2-PLY) 1-3/4" x 14" x 10'-0"
Misc Material	

MCKEE HOMES			
FINLEY	Elev:	EURO	
ANDERSON CREEK ACADEMY			
---	NC	Lot:	1129
Appwright #			

Code: IRC 2015			
Loading:			
T.C.L.L.		10.0 lb/ft2	
T.C.D.L		10.0 lb/ft2	
B.C.L.L.		0.0 lb/ft2	
B.C.D.L.		5.0 lb/ft2	
Designed By:	MWA		
Layout:	SUNRISE		
L/O Date:	02/02/2021		
Revision History		Wind:	
Rev1:	xx/xx/xx	M.P.H.	
Rev2:	xx/xx/xx	Exposure Category	
Rev3:	xx/xx/xx		
Pick Ticket:	---	Job No.:	---
Sales No.:	---	Acct No.:	---

Hatch Legend	
	Attic Room
	Volume Ceiling
	Stick Framing

