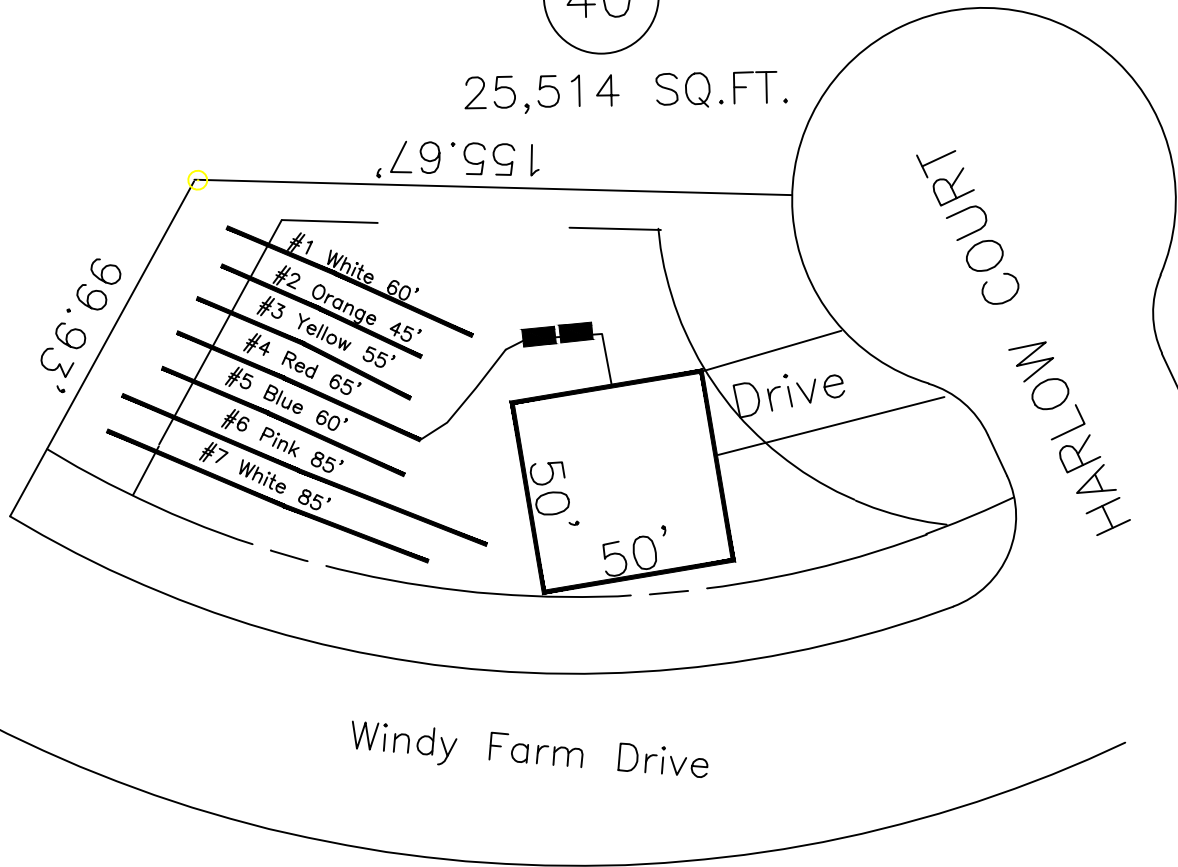


Highland Grove  
 3-Bedroom Septic Proposal  
 Lot #40

40

25,514 SQ.FT.



This drawing represents a preliminary septic plan made prior to final construction activities. A revised plan may need to be reworked at time of permitting.

System: Pump to serial dist.  
 Lines: 1-4 (225')  
 0.4 LTAR  
 24" Trench Bottom  
 Accepted Status System  
 Repair: Pump to D-Box.  
 Lines: 5-7 (225')  
 0.4 LTAR  
 24 Trench Bottom  
 Accepted Status System

\*If plumbing is not sufficient a seperate pump and tank may be required.

GRAPHIC SCALE  
 1" = 50'



Adams  
 Soil Consulting  
 919-414-6761  
 Job #561