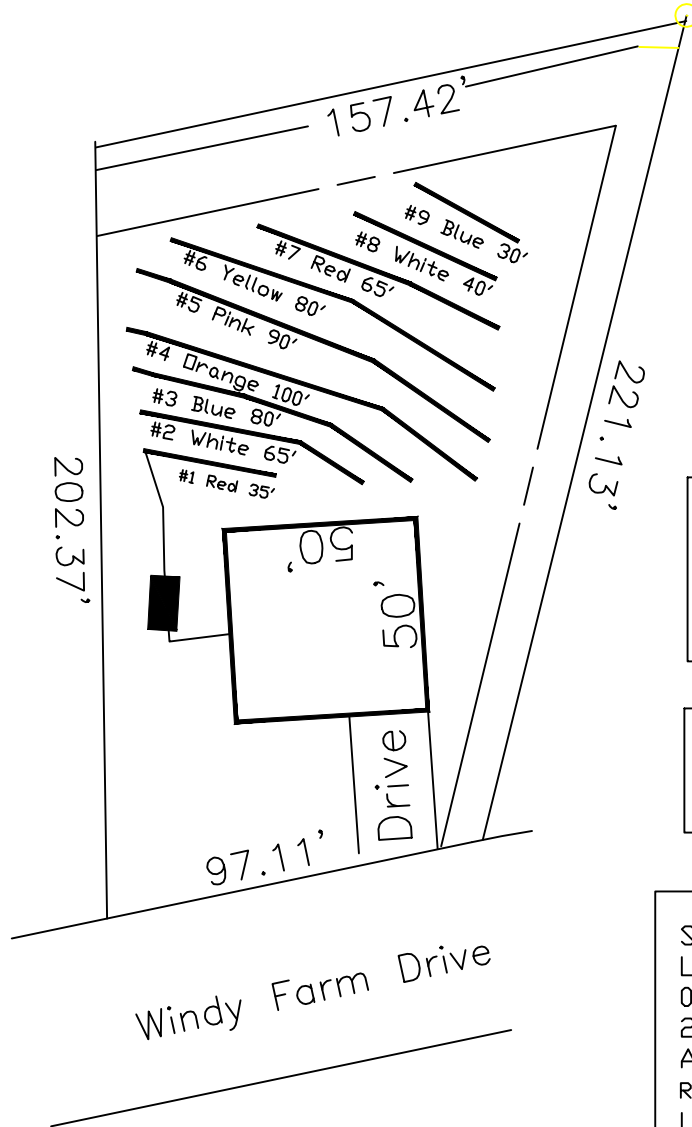


# Highland Grove 3-Bedroom Septic Proposal Lot #7

7

25,589 SQ.FT.



This drawing represents a preliminary septic plan made prior to final construction activities. A revised plan may need to be reworked at time of permitting.

\*If plumbing is not sufficient a separate pump and tank may be required.

System: Gravity to Serial Dist  
Lines: 1-4 (260')  
0.35 LTAR  
24" Trench Bottom  
Accepted Status System  
Repair: Gravity to serial dist..  
Lines: 5-9 (260')  
0.35 LTAR  
24 Trench Bottom  
Accepted Status System

Adams  
Soil Consulting  
919-414-6761  
Job #561