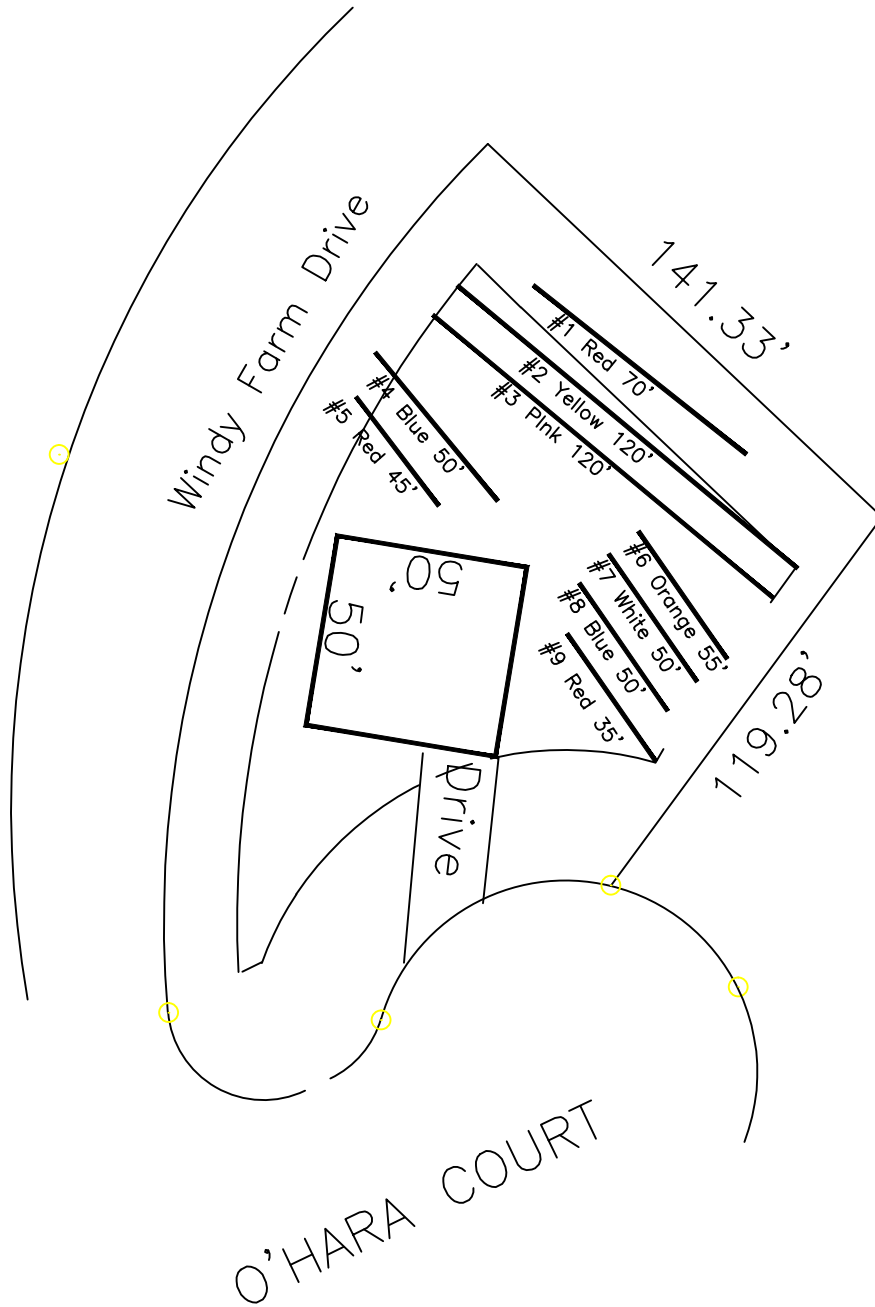


Highland Grove 3-Bedroom Septic Proposal Lot #36



This drawing represents a preliminary septic plan made prior to final construction activities. A revised plan may need to be reworked at time of permitting.

*If plumbing is not sufficient a separate pump and tank may be required.

36

25,641 SQ.FT.

System: Pump to serial dist.
 Lines: 1-3 (225')
 0.4 LTAR
 24" Trench Bottom
 Accepted Status System
 Repair: Pressure Manifold.
 Lines: 4-9 (225')
 0.4 LTAR
 24 Trench Bottom
 Accepted Status System

GRAPHIC SCALE
1" = 50'



Adams
Soil Consulting
919-414-6761
Job #561