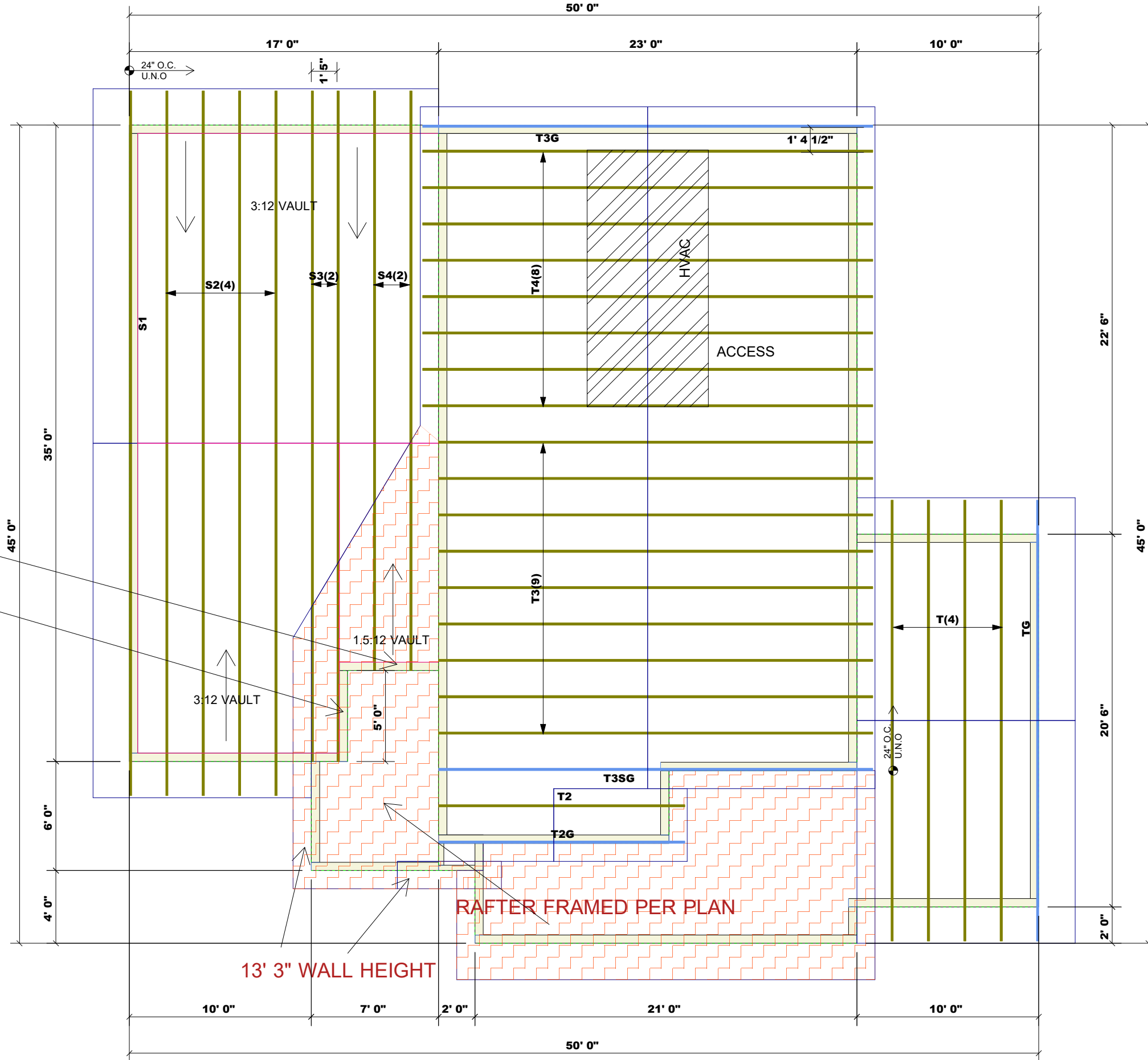


THIS LAYOUT IS INTENDED FOR THE PURPOSE OF TRUSS LOCATION AND PLACEMENT ONLY. REFER TO THE BUILDING PLANS FOR ACTUAL BUILDING CONSTRUCTION.



DEDICATED TO QUALITY AND EXCELLENCE
 200 EMMETT ROAD
 DUNN, NORTH CAROLINA 28334
 PHONE: 910-892-8400



11' 10 1/2" WALL HEIGHT

13' 3" WALL HEIGHT

GARAGE WALLS 8' 1 1/2" HEIGHT

RAFTER FRAMED PER PLAN

PROJECT:	6900AM
CUSTOMER:	J & R HOMES
MODEL:	6900AM RH
QUOTE #:	26012
PRINT DATE:	
DRAWN BY:	JTK
SCALE:	N.T.S

TOP LIVE LOAD:	20.000 lb/ft ²
TOP DEAD LOAD:	10.000 lb/ft ²
BOTTOM DEAD LOAD:	10.000 lb/ft ²
WIND SPEED:	130.0 mph

GENERAL NOTES:
 - DO NOT CUT OR MODIFY TRUSSES
 - TRUSSES ARE SPACED 24" ON CENTER UNLESS OTHERWISE NOTED
 - REFER TO THE INDIVIDUAL TRUSS DESIGN DRAWINGS FOR THE LOCATION OF LATERAL BRACING AND MULTI-PLY CONNECTION REQUIREMENTS.
 - PER ANSI TPI 1-2002 THE TRUSS ENGINEER IS RESPONSIBLE FOR TRUSS TO TRUSS CONNECTIONS AND TRUSS PLY TO PLY CONNECTIONS. THIS TRUSS PLAN RECOMMENDS TRUSS TO BEARING CONNECTIONS AND TRUSS TO BEAM CONNECTIONS WHICH SHALL BE REVIEWED BY THE BUILDING DESIGNER. IT IS THE RESPONSIBILITY OF THE BUILDING DESIGNER TO RESOLVE ALL ROOF FORCES ADEQUATELY TO THE FOUNDATION.