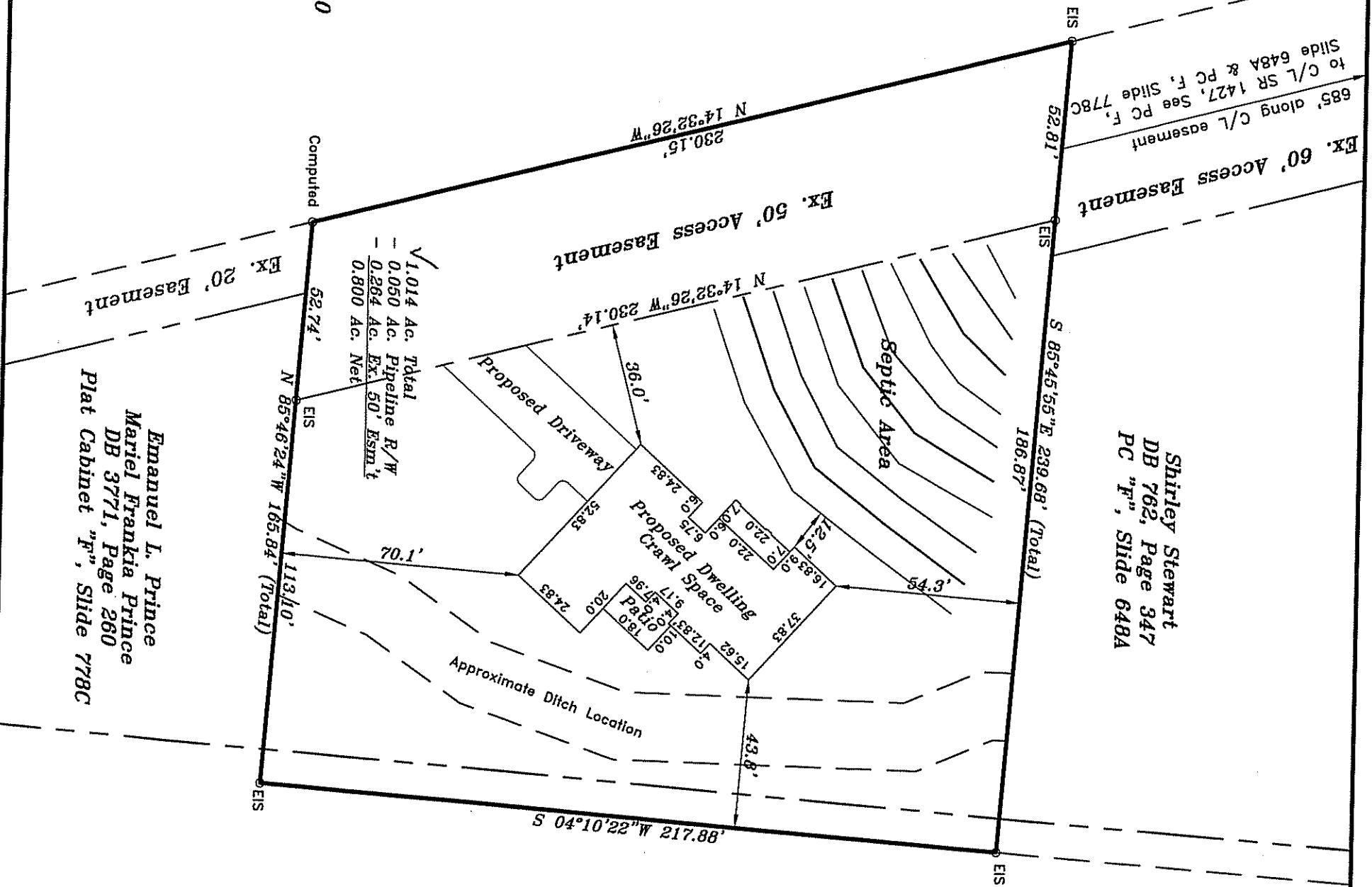


Proposed House Location Only

Kathy Tilley Shaffer
Julie C. Tilley
DB 2240, Page 589

Harnett County
Minimum Building
Setback Requirements
RA-20R, RA-20M, RA-30 & RA-40

FRONT: 35' from R/W
REAR: 25'
SIDE: 10'
CORNER LOT SIDE: 20'

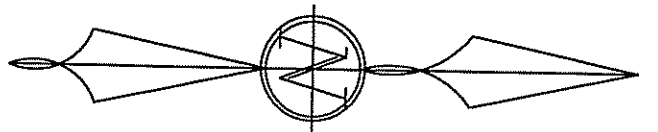


Shirley Stewart
DB 762, Page 347
PC "F", Slide 648A

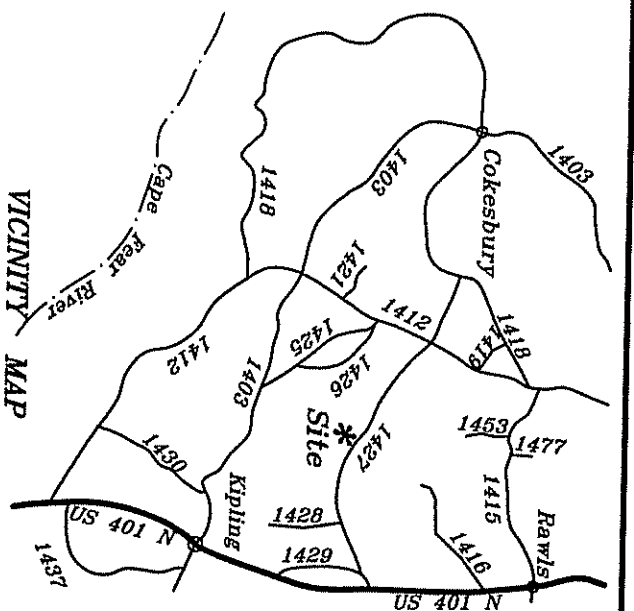
Emmanuel L. Prince
Mariel Frankia Prince
DB 3771, Page 260
Plat Cabinet "F", Slide 778C

50' Colonial Pipeline R/W

Emmanuel L. Prince
Mariel Frankia Prince
DB 3771, Page 260
Plat Cabinet "F", Slide 778C



Plat North
Map Number 2011-41



Baptist Grove Road
 Fuquay-Varina, NC 27526
 Emmanuel Prince Division
 Map Number 98-442
 PIN: 0643-77-2719.000
 Zoned: RA-30
 Hector's Creek Township
 Harnett County, NC
 1" = 40'
 3-15-2021, Revised 4-29-2021

Plot Plan for:

Jason Wade Goweh
Edwina G. Goweh



Surveyed & Mapped By
STANCIL & ASSOCIATES
 Professional Land Surveyor, P.A. C-0831
 P.O. Box 730, Angier, N.C. 27501
 919-639-2133 919-639-2602 (FAX)
 stancilsurvey@gmail.com

