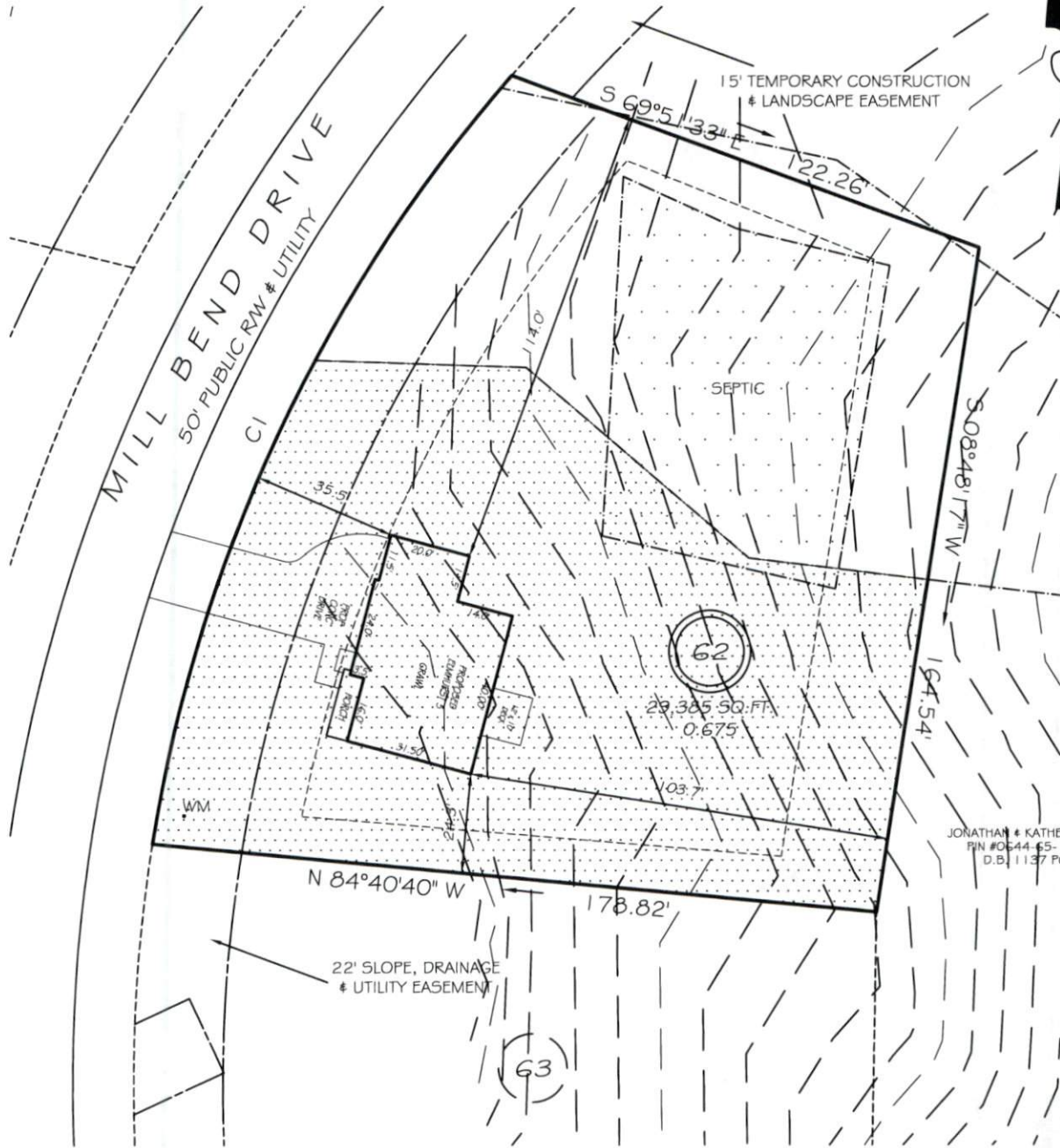


I, MICHAEL P. GRIFFIN, certify that under my direction and supervision this map was drawn from an actual field survey; that the error of closure of the survey as calculated by coordinates is 1: 10,000+; that the area shown hereon was calculated by coordinates.
 Witness my hand and seal this day of MONTH 2020.



BK 2019 PGS 421-424
 HARNETT CO. REGISTRY



JONATHAN & KATHERINE GRIFFIN
 PIN #0644-65-1818.000
 D.B. 1137 PG. 456

IMPERVIOUS AREAS

HOUSE	1660 SQ. FT.
DRIVE & WALKS	872 SQ. FT.
PATIO	000 SQ. FT.
TOTAL	2532 SQ. FT.
ALLOWED	3250 SQ. FT.

SETBACKS

FRONT	35'
REAR	25'
SIDE	10'
CORNER SIDE	20'

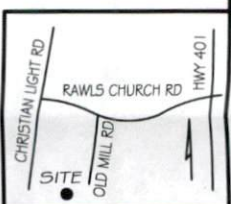
UNSUITABLE SOILS

CI R=375.00' L=210.62' S25°10'56"W 207.86'

PRELIMINARY
 NOT FOR RECORDATION,
 SALES OR CONVEYANCE

LEGEND

EIP	EXISTING IRON PIPE	FES	FLARED END SECTION
IPS	IRON PIPE SET	WM	WATER METER
R/W	RIGHT OF WAY	CO	CLEAN OUT
N/F	NOW OR FORMERLY	FH	FIRE HYDRANT
EIS	EXISTING IRON STAKE	CB	CATCH BASIN



PLOT PLAN