

Forest Oaks 312

LIST OF SYMBOLS			
	SECTION MARK		DATUM ELEVATION
	DETAIL MARK		SLOPE UP
	TITLE MARK		EARTH
	INTERIOR BEARING WALL		INSULATION
	NUMBER OF GANG STUDS IN WALL		

TABLE OF CONTENTS	
1	ELEVATIONS
2	ELEVATIONS
3	FOUNDATION PLAN
4	1st FLOOR PLAN
5	2nd FLOOR PLAN
E1	1st FLOOR ELECTRICAL PLAN
E2	2nd FLOOR ELECTRICAL PLAN

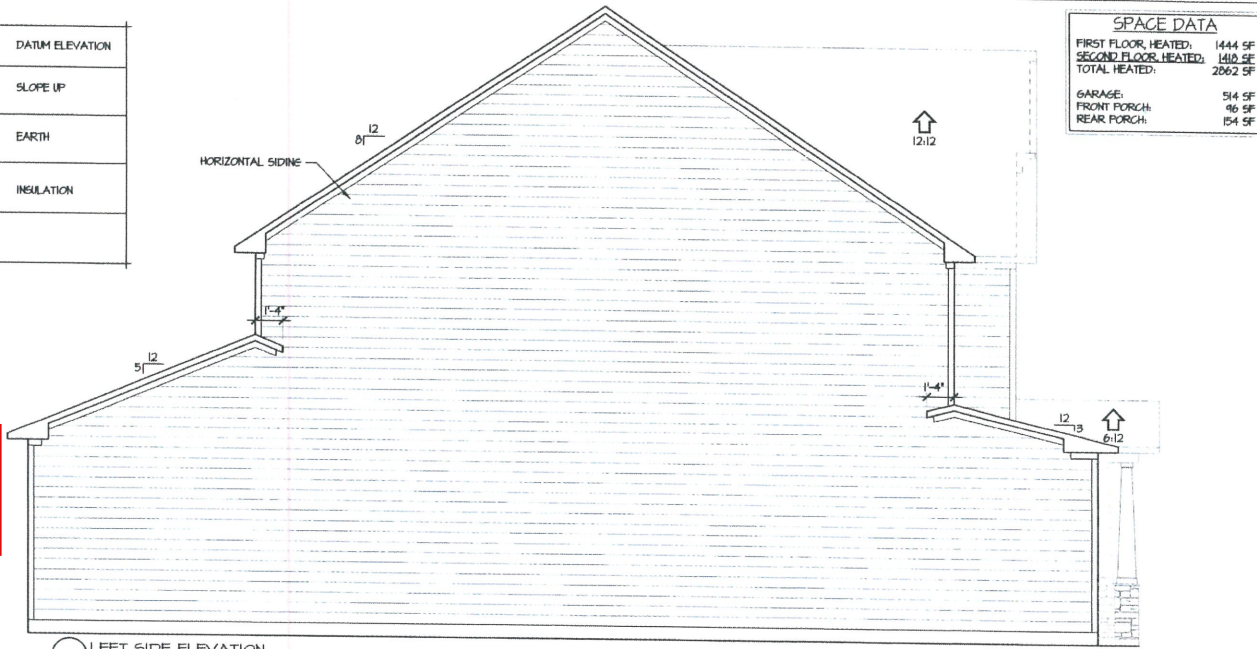
NOTICE TO CONTRACTOR
All construction shall comply with current NC Building Codes and subject to field inspection and verification.

APPROVED
Unlimited building only review
Revised holder responsible for full compliance with the code

Balaban



02/01/2021



SPACE DATA	
FIRST FLOOR, HEATED:	1444 SF
SECOND FLOOR, HEATED:	1410 SF
TOTAL HEATED:	2862 SF
GARAGE:	514 SF
FRONT PORCH:	96 SF
REAR PORCH:	154 SF

Professional Member
Institute of Chartered Architects
American Institute of Building Design
Certified Professional Building Designer
TODD TUCKER, AIA, CPBD
919-495-7930

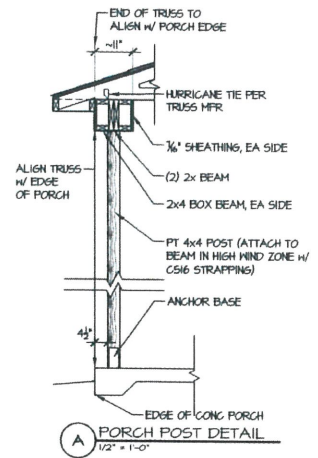
AMERICAN INSTITUTE OF BUILDING DESIGN

NATIONAL COUNCIL OF BUILDING OFFICIALS

TODD TUCKER 34 - 156

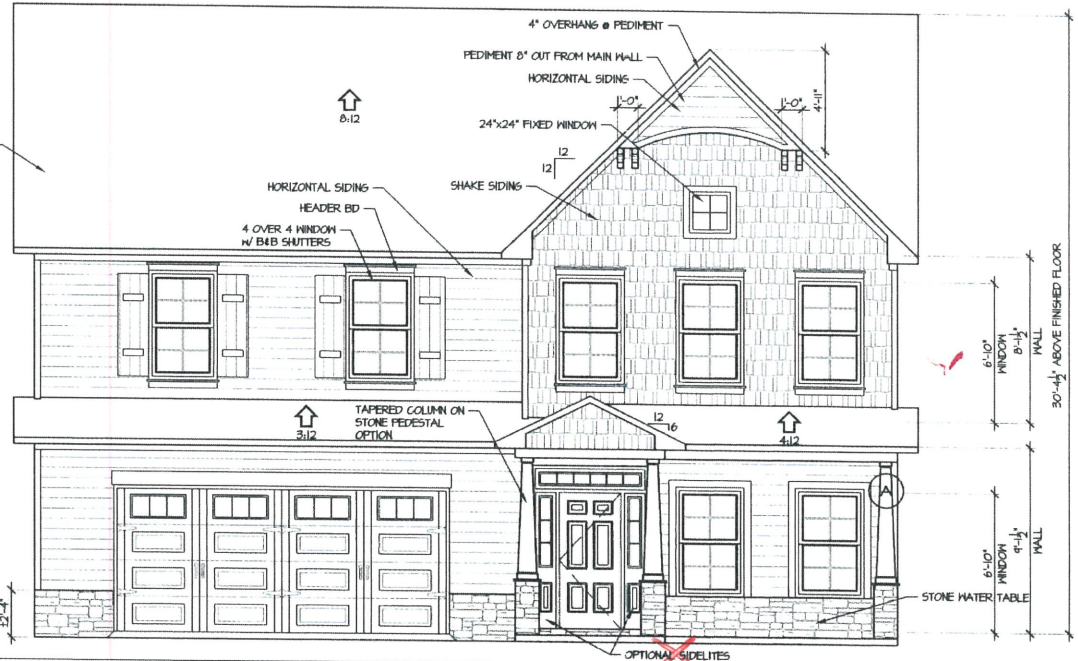
The Architectural Record, Construction Methods, and Building Materials are trademarks of McGraw-Hill Construction Information Group. All other trademarks are the property of their respective owners. This document is intended for use only in the state of North Carolina. It is not to be used in any other state without the express written consent of the Architect. The Architect assumes no responsibility for the construction of the project or for any damage to the project or the property of the owner.

2 LEFT SIDE ELEVATION
1/4" = 1'-0"



A PORCH POST DETAIL
1/2" = 1'-0"

1 FRONT ELEVATION
1/4" = 1'-0"

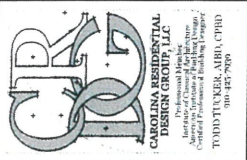


ELEVATIONS/DETAILS

SHEET TITLE:

CL 2862
SCALE AS NOTED
JANUARY 2018
REV:
1

E:\Autodesk Projects\2015\My Projects\CAVINESS LAND\CL 2862\CL 2862_8-21-18.dwg, 8/21/2018 9:41:57 AM, 1, 1



CAROLINA RESIDENTIAL DESIGN GROUP, LLC
 Licensed Professional Architect
 Carolina Residential Design Group, LLC
 2000 TUCKER, ABBY, CPD0
 910-457-7899



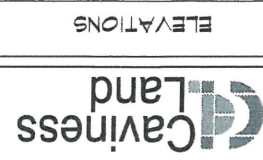
INSTITUTE OF BUILDING DESIGN
 A B D
 AMERICAN
 REGISTERED PROFESSIONAL ARCHITECTS



NATIONAL COUNCIL OF ARCHITECTS
 NORTH CAROLINA
 TODD TUCKER 34-156

ELEVATIONS

SHEET TITLE:



Caviness Land

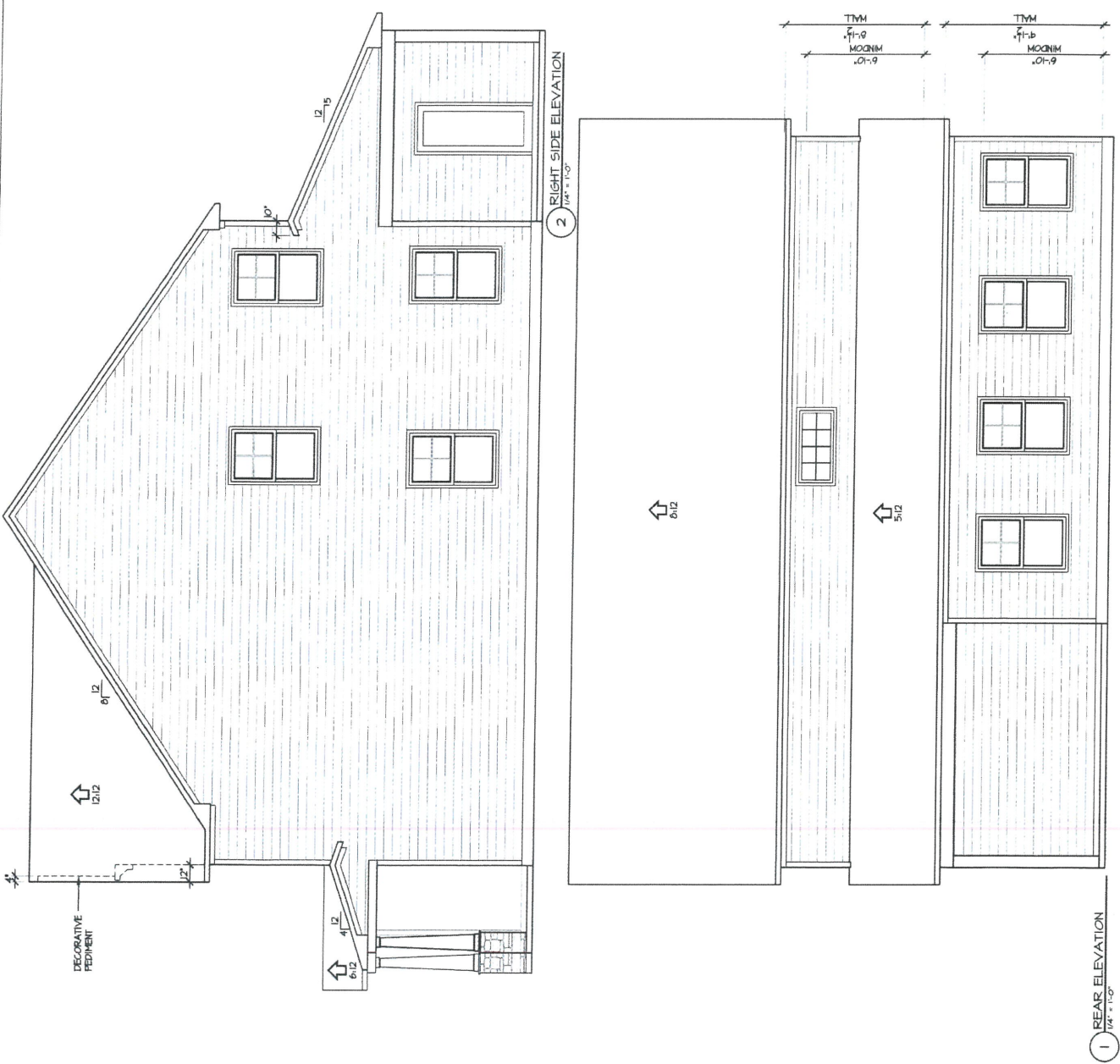
CL 2862

SCALE AS NOTED

JANUARY 2018

REV:

2

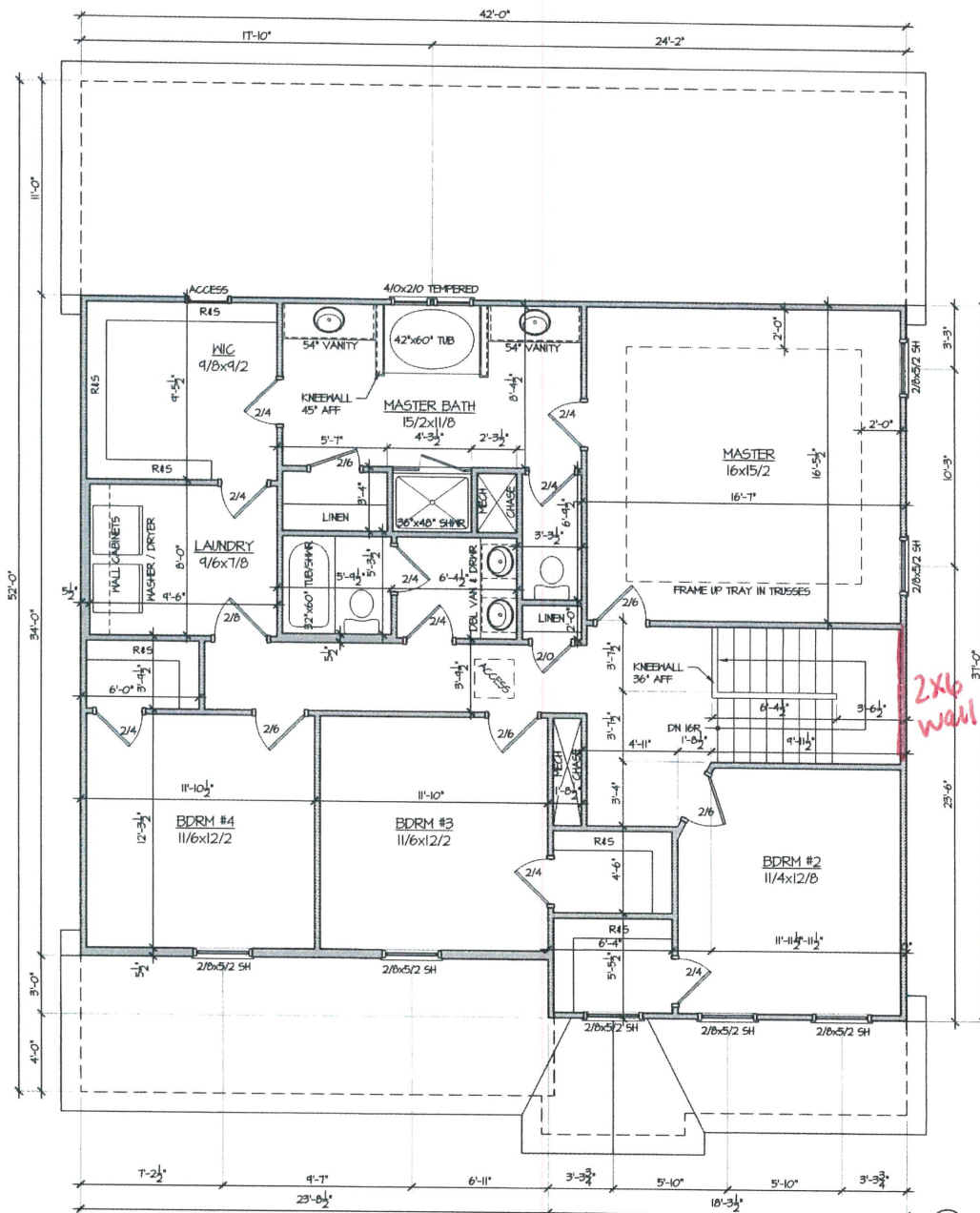


LIST OF ABBREVIATIONS

<p>TOP CHORD</p> <p>TOP OF WALL</p> <p>TRANSOM</p> <p>TYPICAL</p> <p>UNLESS OTHERWISE NOTED</p> <p>VAPOR BARRIER</p> <p>VANITY</p> <p>VAN</p> <p>VA</p> <p>VIBRANT</p> <p>W</p> <p>W</p> <p>NUMBER OF STUD POCKETS & WINDOW/DOOR JAMB</p>	<p>POCKET DOOR</p> <p>PREPARED</p> <p>PLATE</p> <p>POINT LOAD TREATED FOR EXPOSURE</p> <p>FR</p> <p>PL</p> <p>ROD & SHELF (CLOSERS)</p> <p>R4S</p> <p>REINFORCER</p> <p>REIN</p> <p>REINFORCER</p> <p>ROOF</p> <p>REG-INT</p> <p>REG-EXT</p> <p>SHAKE</p> <p>SHELVES</p> <p>SHELVES</p> <p>SPECIFICATION / SPECIFIED</p> <p>SQUARE</p> <p>S5T</p> <p>SIMPLER</p> <p>SIP-FLOOR</p> <p>SIP-LOOK</p> <p>SOUTHERN YELLOW PINE</p>	<p>DISH WASHER</p> <p>EQ</p> <p>FOUNDATION VENT</p> <p>FN</p> <p>GLASS (DOOR)</p> <p>GR</p> <p>HOSE BIB</p> <p>HR</p> <p>DOOR / WINDOW / OPENING HEADER</p> <p>HVAC</p> <p>HEATING, VENTING & AIR CONDITION</p> <p>KIBEWALL</p> <p>LVL</p> <p>LAMINATED VENEER LIMBER</p> <p>MANUF</p> <p>MANUFACTURED</p> <p>MASONRY</p> <p>NOT IN CONTRACT</p> <p>NC</p> <p>OH</p> <p>ON CENTER</p> <p>OPENINGS</p>	<p>ACCESS TO ATTIC OR CRAWL SPACE</p> <p>AFF</p> <p>ABOVE FLOOR</p> <p>BEDROOM</p> <p>BDRM</p> <p>BATH</p> <p>CAB</p> <p>CABINETS / CABINETS</p> <p>CONTROL JOINT</p> <p>CHU</p> <p>CONCRETE MASONRY UNIT</p> <p>CLEAR OPENING</p> <p>COL</p> <p>COLUMN</p> <p>CASH</p> <p>CASHEMENT</p> <p>CONC</p> <p>CONCRETE</p> <p>DOUBLE HANG / SINGLE HANG WINDOW</p> <p>DIAH</p> <p>DISH</p> <p>DOWN</p> <p>DEEP</p>
---	---	---	--

1 REAR ELEVATION
1/8" = 1'-0"

2 RIGHT SIDE ELEVATION
1/8" = 1'-0"



SPACE DATA	
FIRST FLOOR HEATED	1444 SF
SECOND FLOOR HEATED	1460 SF
TOTAL HEATED	2862 SF
GARAGE:	
FRONT PORCH	514 SF
REAR PORCH	154 SF

FIELD & REDLINE NOTES

CAROLINA RESIDENTIAL DESIGN GROUP, LLC
 Professional Building
 Institute of Class of the Architecture
 Approved Institute of Building Design
 Certified Professional Building Designer
 TODD TUCKER, AIA, CPBD
 919-425-7030

NATIONAL INSTITUTE OF BUILDING DESIGN

NATIONAL COUNCIL OF BUILDING DESIGNERS
 TODD TUCKER 34-156

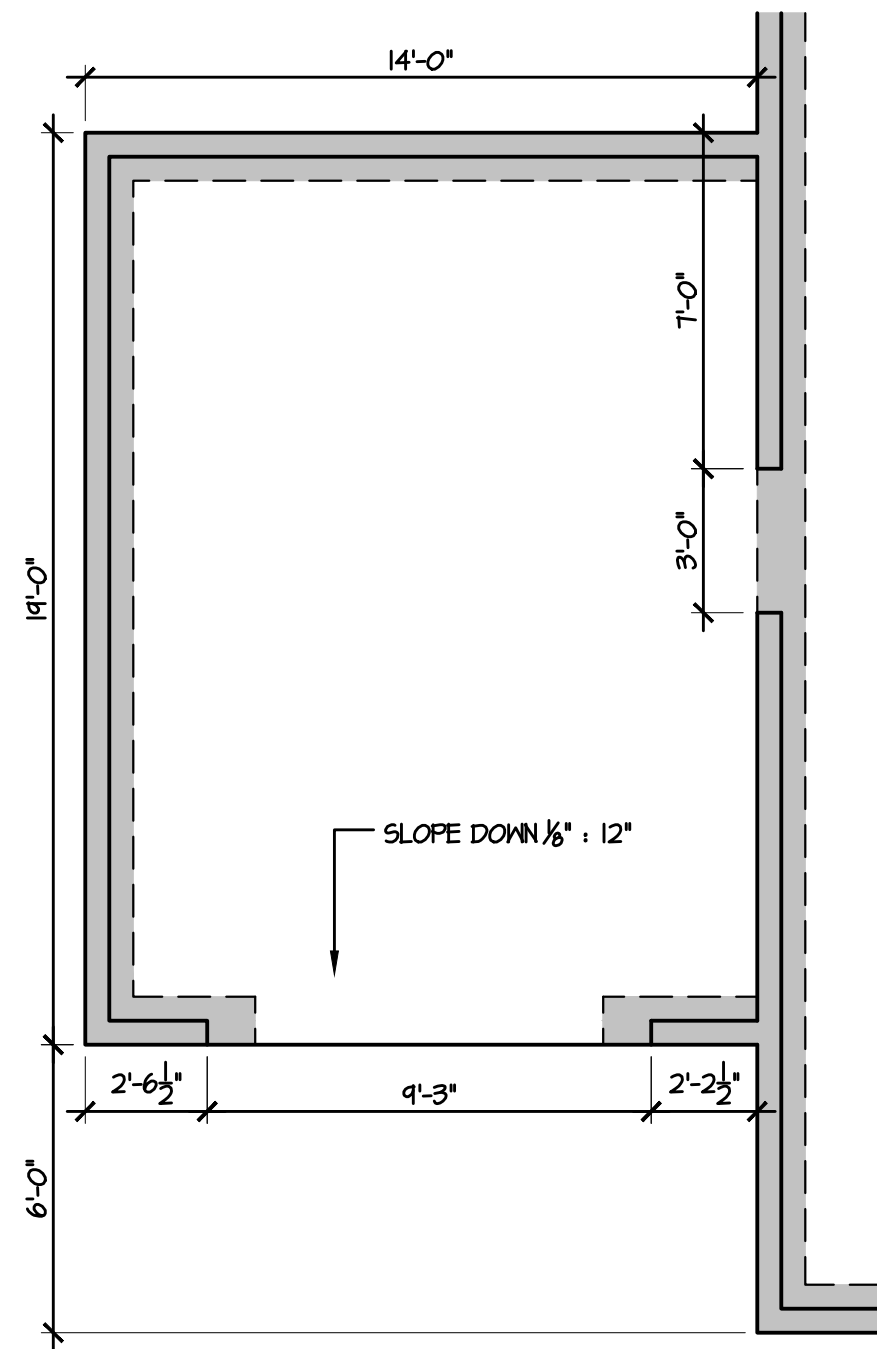
THE INFORMATION ON THIS SHEET IS FOR INFORMATIONAL PURPOSES ONLY. IT IS NOT TO BE USED AS A CONTRACT DOCUMENT. THE CONTRACTOR SHALL BE RESPONSIBLE FOR VERIFYING ALL DIMENSIONS AND CONDITIONS ON THE JOB. THE ARCHITECT SHALL NOT BE RESPONSIBLE FOR ANY ERRORS OR OMISSIONS IN THIS DOCUMENT. THE CONTRACTOR SHALL BE RESPONSIBLE FOR OBTAINING ALL NECESSARY PERMITS AND APPROVALS FROM THE LOCAL, STATE, AND FEDERAL AUTHORITIES. THE CONTRACTOR SHALL BE RESPONSIBLE FOR OBTAINING ALL NECESSARY INSURANCE COVERAGE. THE CONTRACTOR SHALL BE RESPONSIBLE FOR OBTAINING ALL NECESSARY UTILITIES INFORMATION. THE CONTRACTOR SHALL BE RESPONSIBLE FOR OBTAINING ALL NECESSARY SURVEY INFORMATION. THE CONTRACTOR SHALL BE RESPONSIBLE FOR OBTAINING ALL NECESSARY GEOTECHNICAL INFORMATION. THE CONTRACTOR SHALL BE RESPONSIBLE FOR OBTAINING ALL NECESSARY ENVIRONMENTAL INFORMATION. THE CONTRACTOR SHALL BE RESPONSIBLE FOR OBTAINING ALL NECESSARY HISTORICAL INFORMATION. THE CONTRACTOR SHALL BE RESPONSIBLE FOR OBTAINING ALL NECESSARY ARCHAEOLOGICAL INFORMATION. THE CONTRACTOR SHALL BE RESPONSIBLE FOR OBTAINING ALL NECESSARY PALEONTOLOGICAL INFORMATION. THE CONTRACTOR SHALL BE RESPONSIBLE FOR OBTAINING ALL NECESSARY ANTHROPOLOGICAL INFORMATION. THE CONTRACTOR SHALL BE RESPONSIBLE FOR OBTAINING ALL NECESSARY LINGUISTIC INFORMATION. THE CONTRACTOR SHALL BE RESPONSIBLE FOR OBTAINING ALL NECESSARY ETHNOGRAPHIC INFORMATION. THE CONTRACTOR SHALL BE RESPONSIBLE FOR OBTAINING ALL NECESSARY ETHNOHISTORICAL INFORMATION. THE CONTRACTOR SHALL BE RESPONSIBLE FOR OBTAINING ALL NECESSARY ETHNOARCHAEOLOGICAL INFORMATION. THE CONTRACTOR SHALL BE RESPONSIBLE FOR OBTAINING ALL NECESSARY ETHNOLINGUISTIC INFORMATION. THE CONTRACTOR SHALL BE RESPONSIBLE FOR OBTAINING ALL NECESSARY ETHNOMUSICOLOGICAL INFORMATION. THE CONTRACTOR SHALL BE RESPONSIBLE FOR OBTAINING ALL NECESSARY ETHNOBOTANICAL INFORMATION. THE CONTRACTOR SHALL BE RESPONSIBLE FOR OBTAINING ALL NECESSARY ETHNOZOOLOGICAL INFORMATION. THE CONTRACTOR SHALL BE RESPONSIBLE FOR OBTAINING ALL NECESSARY ETHNOLINGUISTIC INFORMATION. THE CONTRACTOR SHALL BE RESPONSIBLE FOR OBTAINING ALL NECESSARY ETHNOMUSICOLOGICAL INFORMATION. THE CONTRACTOR SHALL BE RESPONSIBLE FOR OBTAINING ALL NECESSARY ETHNOBOTANICAL INFORMATION. THE CONTRACTOR SHALL BE RESPONSIBLE FOR OBTAINING ALL NECESSARY ETHNOZOOLOGICAL INFORMATION.

Caviness Land
 SHEET TITLE:
SECOND FLOOR PLAN - 4 BDRM

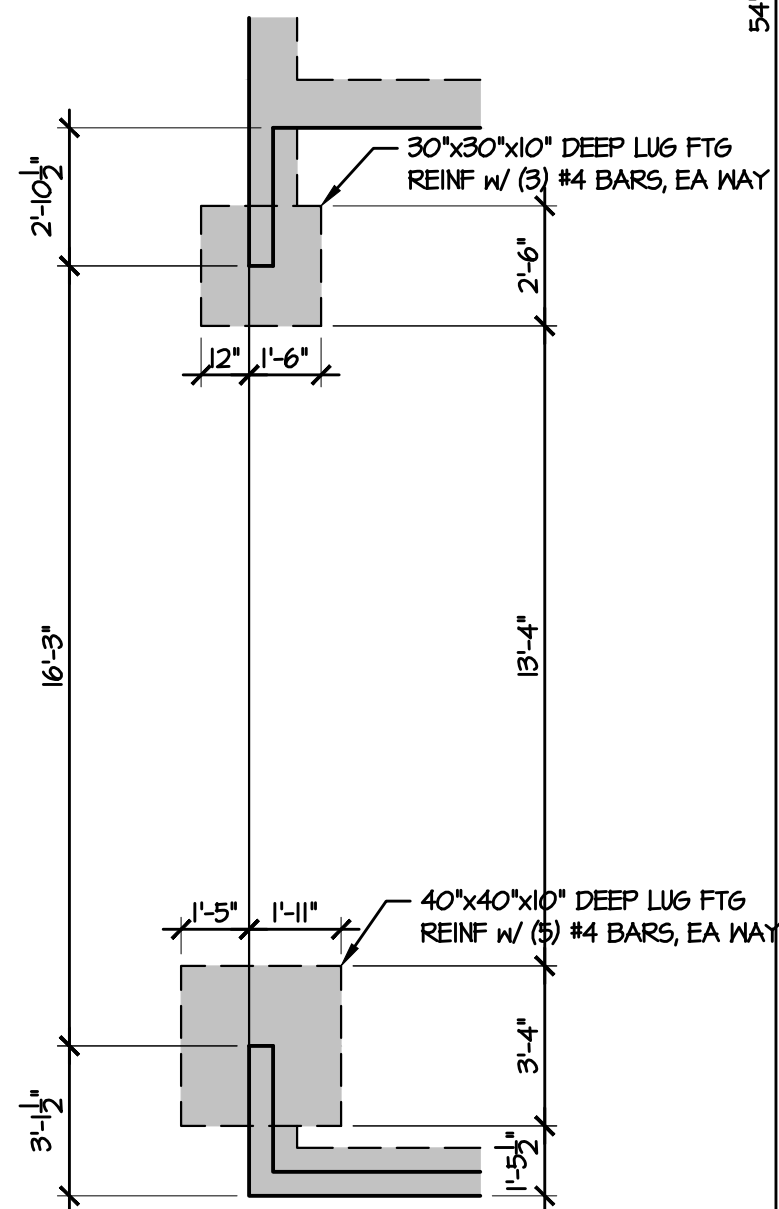
CL 2862
 SCALE AS NOTED
 JANUARY 2018
 REV: **5**

1 SECOND FLOOR PLAN
 1/4" = 1'-0"

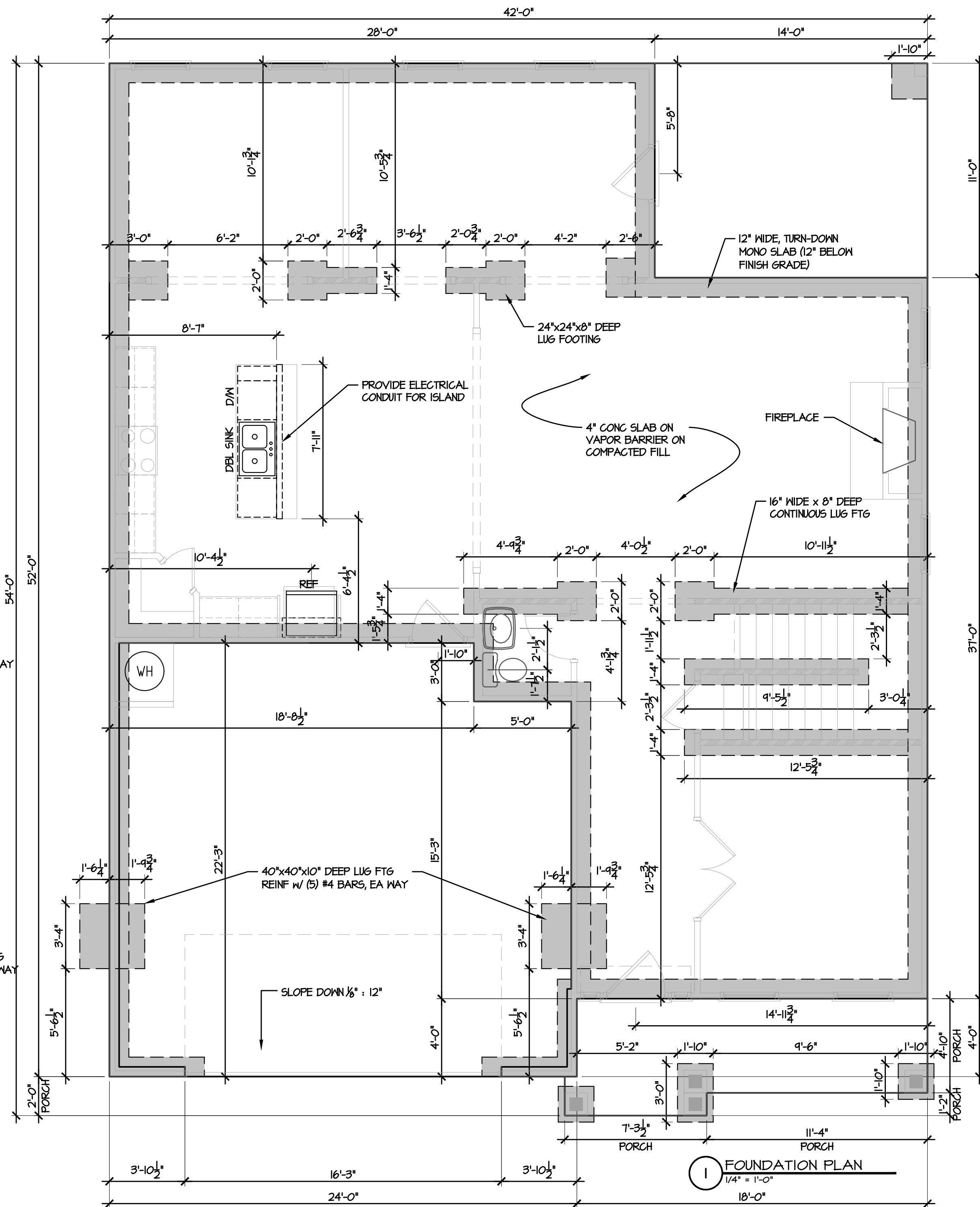
C:\Projects\Caviness Land\CL 2862\CL 2862 CL 5-3-20.dwg, 5/3/2020 10:07:22 AM



3 3rd CAR OPTION
1/4" = 1'-0"



2 SIDE LOAD OPTION
1/4" = 1'-0"



1 FOUNDATION PLAN
1/4" = 1'-0"



TODD TUCKER 34 - 156

© 2019 CavLand
1041-B Robeson St
Fayetteville, NC 28305
Office: 910-339-6330
Fax: 910-339-6333

CL 2862

SLAB PLAN

SCALE:
AS NOTED

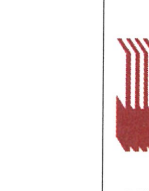
DATE:
APRIL 2019

PLAN:
CL 2862

LOT NO:

SHEET NO:

3

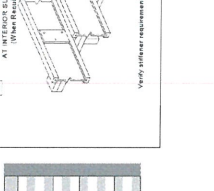
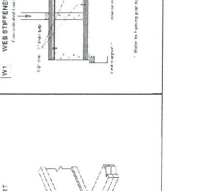
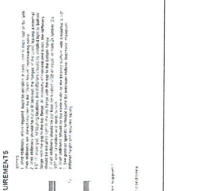
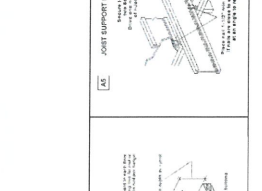
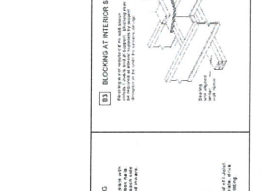
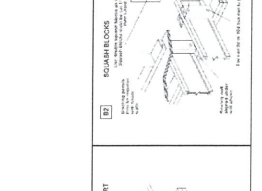
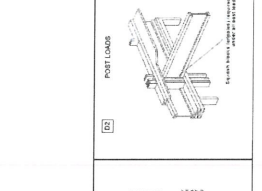
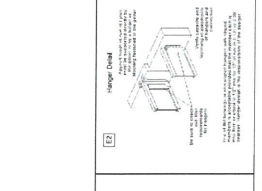
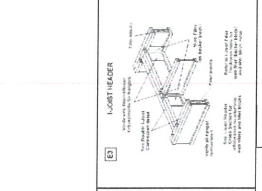
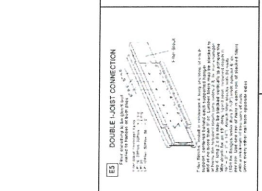
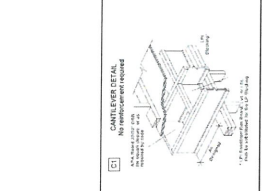


U.S. LUMBER
2160 Stadler Blvd., Suite 450
Duluth, GA 30097
888-613-5078



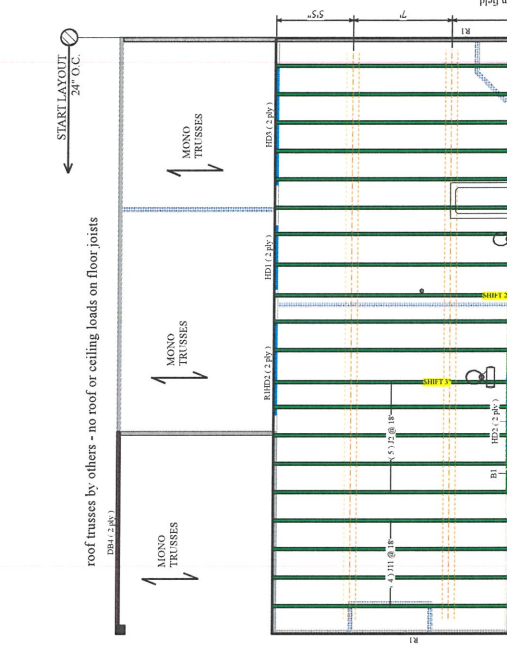
84 LUMBER
Build on what we know™
Vender: 84 Lumber, Fayetteville 3207
Dealer Address: 620 Bell Road, Fayetteville, NC 28301, (910) 879-9185
Project: OSB
Created: January 21, 2020
Layout Name: 20200-14511
Description: Curves Land
Designer: 16734 Blackhawk Village, K&A-Milner

2nd Flr	Design Method	Design Code	Floor	Joist	Truss	Beam	Decking	OSB	Substrate
ASD (USA)	ASD	IBC 2018	40	40	40	40	40	40	40
Web Stiffener: 2x3 APA Rated Strand Joist: 2x10 Truss: 2x6 Beam: 2x10 Decking: 2x8 OSB: 2332 APA Rated Strand Substrate: 1/2" OSB									



Series	Depth	Minimum Thickness	Max Spacing	Min Spacing	Min Spacing	Min Spacing	Min Spacing	Min Spacing	Min Spacing
LP 18	1 1/2"	1/4"	24"	12"	12"	12"	12"	12"	12"
LP 16	1 1/4"	1/4"	24"	12"	12"	12"	12"	12"	12"
LP 14	1 1/8"	1/4"	24"	12"	12"	12"	12"	12"	12"
LP 12	1 1/4"	1/4"	24"	12"	12"	12"	12"	12"	12"
LP 10	1 1/4"	1/4"	24"	12"	12"	12"	12"	12"	12"
LP 8	1 1/4"	1/4"	24"	12"	12"	12"	12"	12"	12"
LP 6	1 1/4"	1/4"	24"	12"	12"	12"	12"	12"	12"

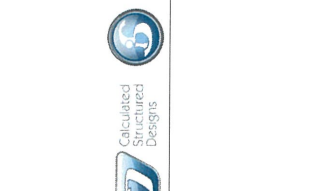
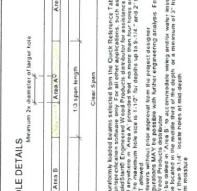
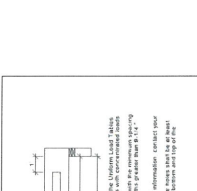
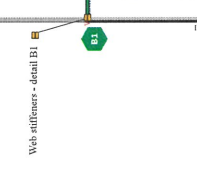
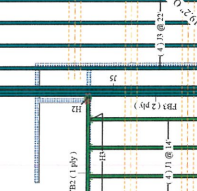
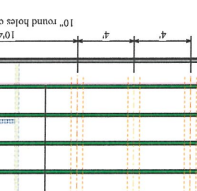
Label	Description	Width	Depth	Qty	Flts	Fsa	Length
H1	LP 18 Truss	2 1/2"	14"	1	1	1	10'-0"
H2	LP 16 Truss	2 1/2"	14"	1	1	1	10'-0"
H3	LP 14 Truss	2 1/2"	14"	1	1	1	10'-0"
H4	LP 12 Truss	2 1/2"	14"	1	1	1	10'-0"
H5	LP 10 Truss	2 1/2"	14"	1	1	1	10'-0"
H6	LP 8 Truss	2 1/2"	14"	1	1	1	10'-0"
H7	LP 6 Truss	2 1/2"	14"	1	1	1	10'-0"
H8	LP 4 Truss	2 1/2"	14"	1	1	1	10'-0"
H9	LP 2 Truss	2 1/2"	14"	1	1	1	10'-0"
H10	LP 1 Truss	2 1/2"	14"	1	1	1	10'-0"
H11	LP 1 Truss	2 1/2"	14"	1	1	1	10'-0"
H12	LP 1 Truss	2 1/2"	14"	1	1	1	10'-0"
H13	LP 1 Truss	2 1/2"	14"	1	1	1	10'-0"
H14	LP 1 Truss	2 1/2"	14"	1	1	1	10'-0"
H15	LP 1 Truss	2 1/2"	14"	1	1	1	10'-0"



Series	Depth	Max Spacing	Min Spacing	Min Spacing	Min Spacing	Min Spacing	Min Spacing	Min Spacing	Min Spacing
LP 18	1 1/2"	24"	12"	12"	12"	12"	12"	12"	12"
LP 16	1 1/4"	24"	12"	12"	12"	12"	12"	12"	12"
LP 14	1 1/8"	24"	12"	12"	12"	12"	12"	12"	12"
LP 12	1 1/4"	24"	12"	12"	12"	12"	12"	12"	12"
LP 10	1 1/4"	24"	12"	12"	12"	12"	12"	12"	12"
LP 8	1 1/4"	24"	12"	12"	12"	12"	12"	12"	12"
LP 6	1 1/4"	24"	12"	12"	12"	12"	12"	12"	12"

Label	Description	Width	Depth	Qty	Flts	Fsa	Length
H1	LP 18 Truss	2 1/2"	14"	1	1	1	10'-0"
H2	LP 16 Truss	2 1/2"	14"	1	1	1	10'-0"
H3	LP 14 Truss	2 1/2"	14"	1	1	1	10'-0"
H4	LP 12 Truss	2 1/2"	14"	1	1	1	10'-0"
H5	LP 10 Truss	2 1/2"	14"	1	1	1	10'-0"
H6	LP 8 Truss	2 1/2"	14"	1	1	1	10'-0"
H7	LP 6 Truss	2 1/2"	14"	1	1	1	10'-0"
H8	LP 4 Truss	2 1/2"	14"	1	1	1	10'-0"
H9	LP 2 Truss	2 1/2"	14"	1	1	1	10'-0"
H10	LP 1 Truss	2 1/2"	14"	1	1	1	10'-0"
H11	LP 1 Truss	2 1/2"	14"	1	1	1	10'-0"
H12	LP 1 Truss	2 1/2"	14"	1	1	1	10'-0"
H13	LP 1 Truss	2 1/2"	14"	1	1	1	10'-0"
H14	LP 1 Truss	2 1/2"	14"	1	1	1	10'-0"
H15	LP 1 Truss	2 1/2"	14"	1	1	1	10'-0"

Label	Description	Width	Depth	Qty	Flts	Fsa	Length
H1	LP 18 Truss	2 1/2"	14"	1	1	1	10'-0"
H2	LP 16 Truss	2 1/2"	14"	1	1	1	10'-0"
H3	LP 14 Truss	2 1/2"	14"	1	1	1	10'-0"
H4	LP 12 Truss	2 1/2"	14"	1	1	1	10'-0"
H5	LP 10 Truss	2 1/2"	14"	1	1	1	10'-0"
H6	LP 8 Truss	2 1/2"	14"	1	1	1	10'-0"
H7	LP 6 Truss	2 1/2"	14"	1	1	1	10'-0"
H8	LP 4 Truss	2 1/2"	14"	1	1	1	10'-0"
H9	LP 2 Truss	2 1/2"	14"	1	1	1	10'-0"
H10	LP 1 Truss	2 1/2"	14"	1	1	1	10'-0"
H11	LP 1 Truss	2 1/2"	14"	1	1	1	10'-0"
H12	LP 1 Truss	2 1/2"	14"	1	1	1	10'-0"
H13	LP 1 Truss	2 1/2"	14"	1	1	1	10'-0"
H14	LP 1 Truss	2 1/2"	14"	1	1	1	10'-0"
H15	LP 1 Truss	2 1/2"	14"	1	1	1	10'-0"



2ND FLOOR FRAMING
SCALE: 1/4" = 1'

MONO TRUSSES
MONO TRUSSES
MONO TRUSSES
MONO TRUSSES
MONO TRUSSES

MONO TRUSSES
MONO TRUSSES
MONO TRUSSES
MONO TRUSSES
MONO TRUSSES

MONO TRUSSES
MONO TRUSSES
MONO TRUSSES
MONO TRUSSES
MONO TRUSSES

MONO TRUSSES
MONO TRUSSES
MONO TRUSSES
MONO TRUSSES
MONO TRUSSES

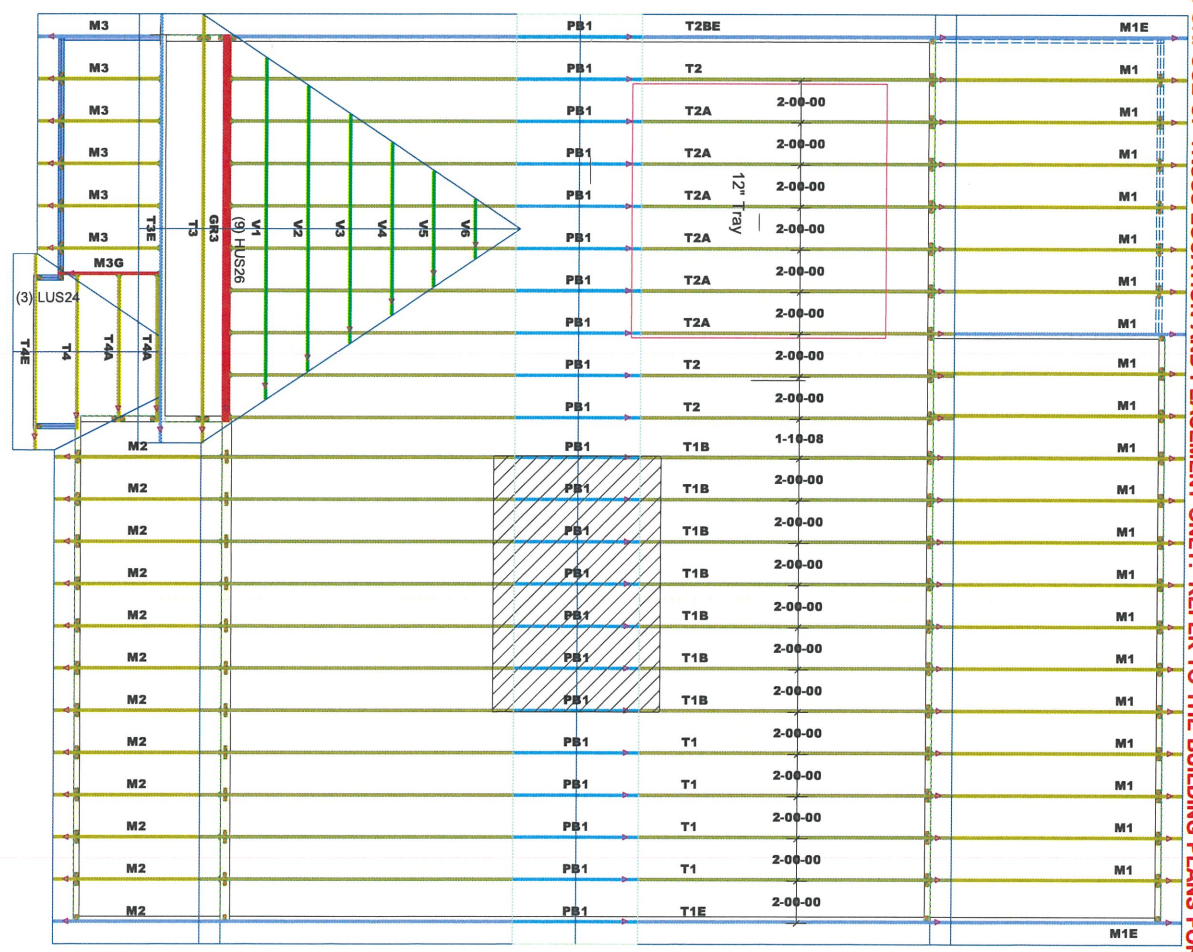
MONO TRUSSES
MONO TRUSSES
MONO TRUSSES
MONO TRUSSES
MONO TRUSSES

MONO TRUSSES
MONO TRUSSES
MONO TRUSSES
MONO TRUSSES
MONO TRUSSES

© 2020 CS2 Calculated Structured Designs. All rights reserved. This document is the property of CS2 Calculated Structured Designs. No part of this document may be reproduced or transmitted in any form or by any means, electronic, mechanical, photocopying, recording, or by any information storage and retrieval system, without the prior written permission of CS2 Calculated Structured Designs. This document is intended for use as a design guide only. It is not intended to be used as a substitute for professional engineering or architectural services. The user of this document assumes all liability for any errors or omissions. The user of this document is advised to verify the accuracy of the information contained herein before using it for any purpose. The user of this document is advised to consult with a qualified professional engineer or architect before using this document for any project. The user of this document is advised to consult with a qualified professional engineer or architect before using this document for any project. The user of this document is advised to consult with a qualified professional engineer or architect before using this document for any project. The user of this document is advised to consult with a qualified professional engineer or architect before using this document for any project.

THIS LAYOUT IS INTENDED FOR THE PURPOSE OF TRUSS LOCATION AND PLACEMENT ONLY. REFER TO THE BUILDING PLANS FOR ACTUAL BUILDING CONSTRUCTION.

1st Level Roof Area 910.01
2nd Level Roof Area 0



GENERAL NOTES:

- DO NOT CUT OR MODIFY TRUSSES
- TRUSSES ARE SPACED 24" ON CENTER UNLESS OTHERWISE NOTED
- REFER TO THE INDIVIDUAL TRUSS DESIGN DRAWINGS FOR THE LOCATION OF LATERAL BRACING AND MULTI-PLY CONNECTION REQUIREMENTS.
- PER ANSI TPI 1-2002 THE TRUSS ENGINEER IS RESPONSIBLE FOR TRUSS TO TRUSS CONNECTIONS AND TRUSS PLY TO PLY CONNECTIONS. THIS TRUSS PLACEMENT PLAN RECOMMENDS TRUSS TO BEARING CONNECTIONS AND TRUSS TO BEAM CONNECTIONS WHICH SHALL BE REVIEWED BY THE BUILDING DESIGNER. IT IS THE RESPONSIBILITY OF THE BUILDING DESIGNER TO RESOLVE ALL ROOF FORCES ADEQUATELY TO THE FOUNDATION.

WIND SPEED: 130 mph	TOP DEAD LOAD: 10.0 DPM
BOTTOM DEAD LOAD: 10.0 DPM	TOP LIVE LOAD: 20.0 DPM

PROJECT: Master CL 2862 CP			
CUSTOMER: Caviness Land Development			
MODEL: CL 2862 CP			
QUOTE #: 1800888	PRINT DATE: 6/14/2018	DRAWN BY: Rodney Evans	SCALE: N.T.S

DEDICATED TO QUALITY AND EXCELLENCE
200 EMMETT ROAD
DUNN, NORTH CAROLINA 28534
PHONE: 910-882-8400

