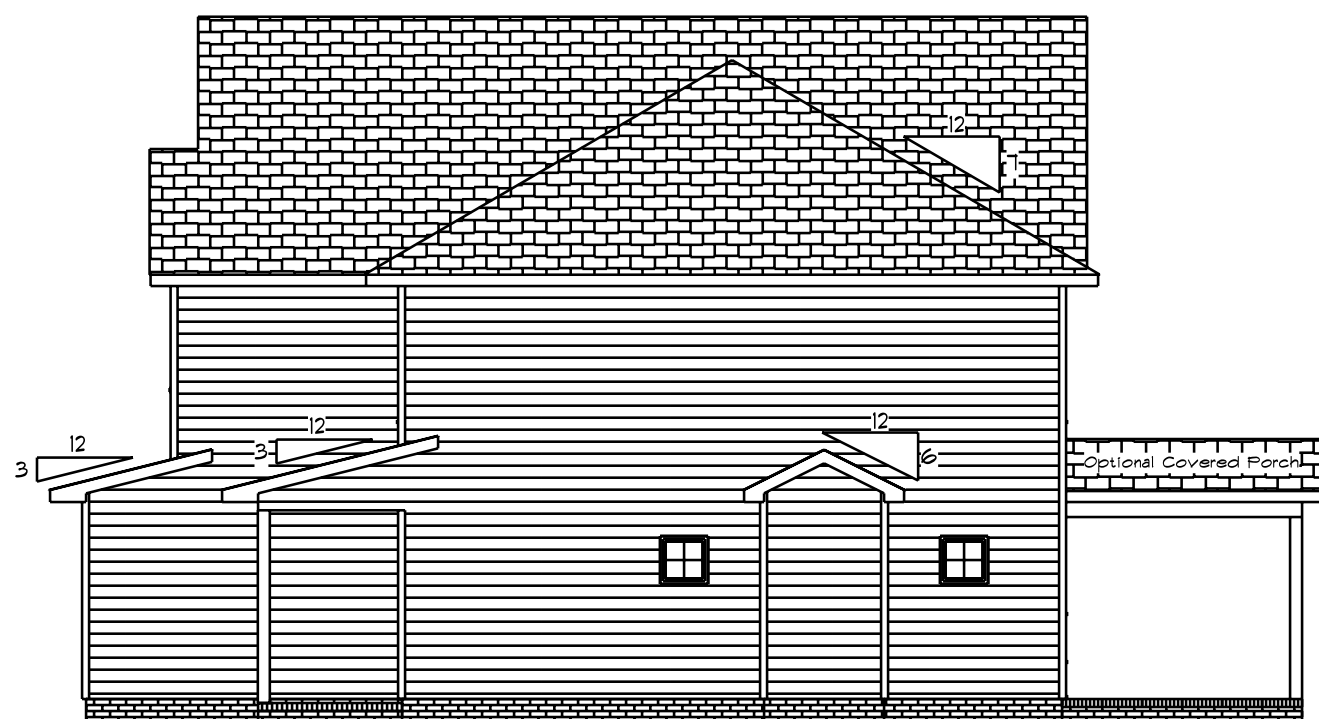




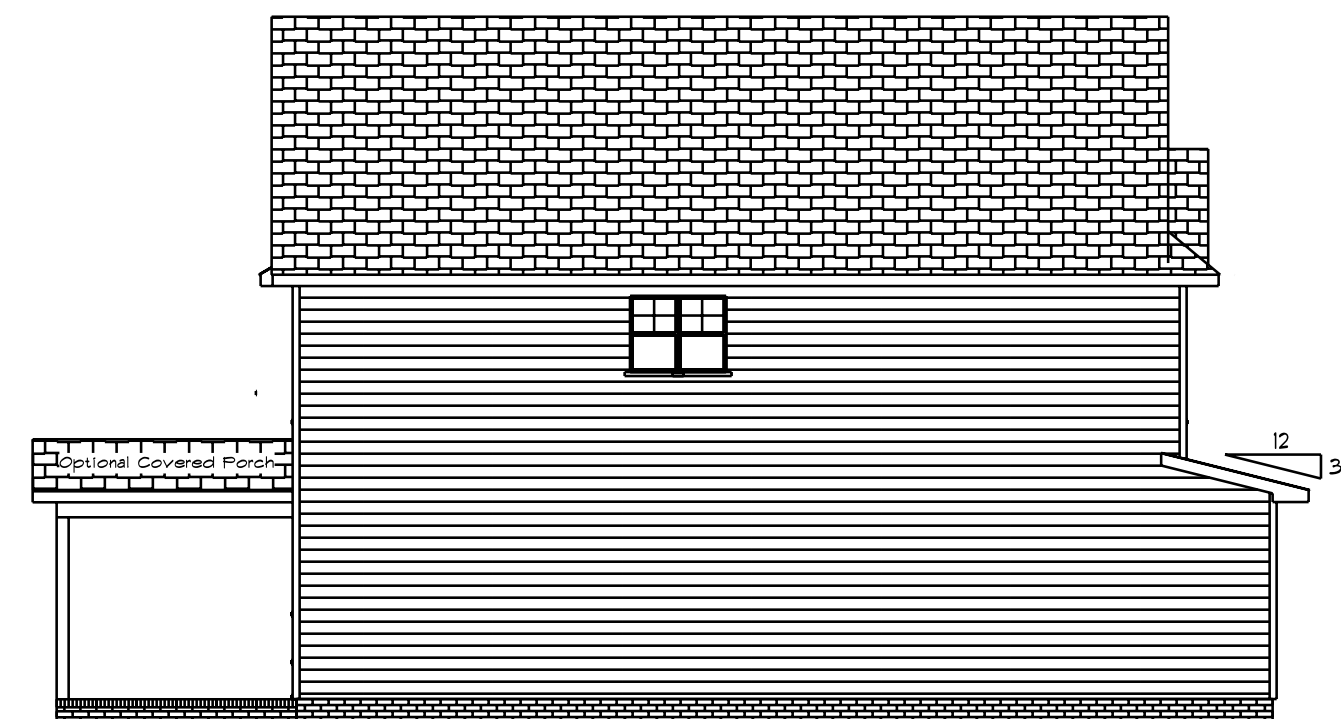
Front Elevation
Scale: 1/4" = 1'0"



Rear Elevation
Scale: 1/8" = 1'0"



Left Elevation
Scale: 1/8" = 1'0"



Right Elevation
Scale: 1/8" = 1'0"

DATE: 8/25/2020

REVISED

DRAWING#

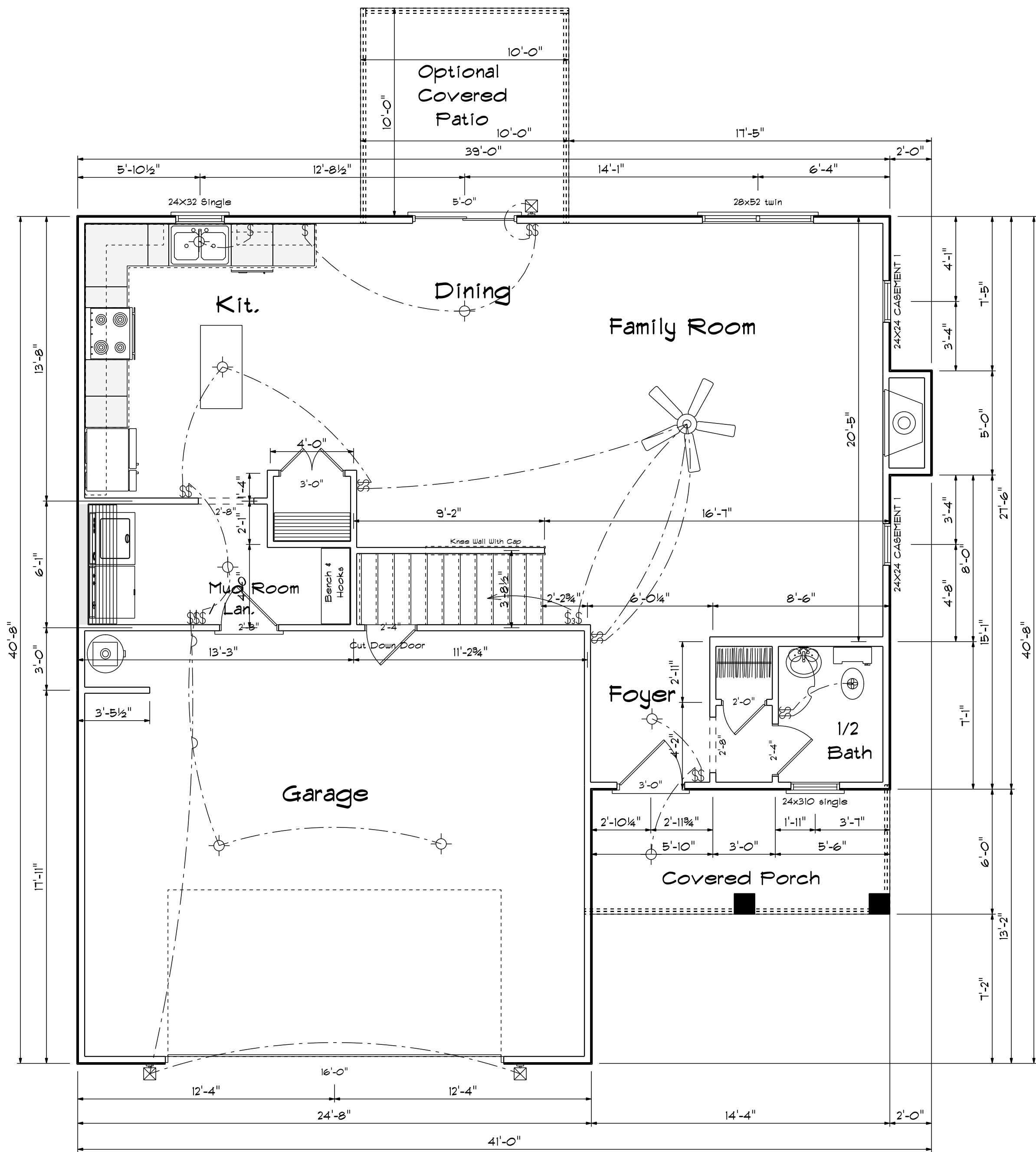
Elev. A

SCALE: 1/4"

DRAWN BY

APPROVED

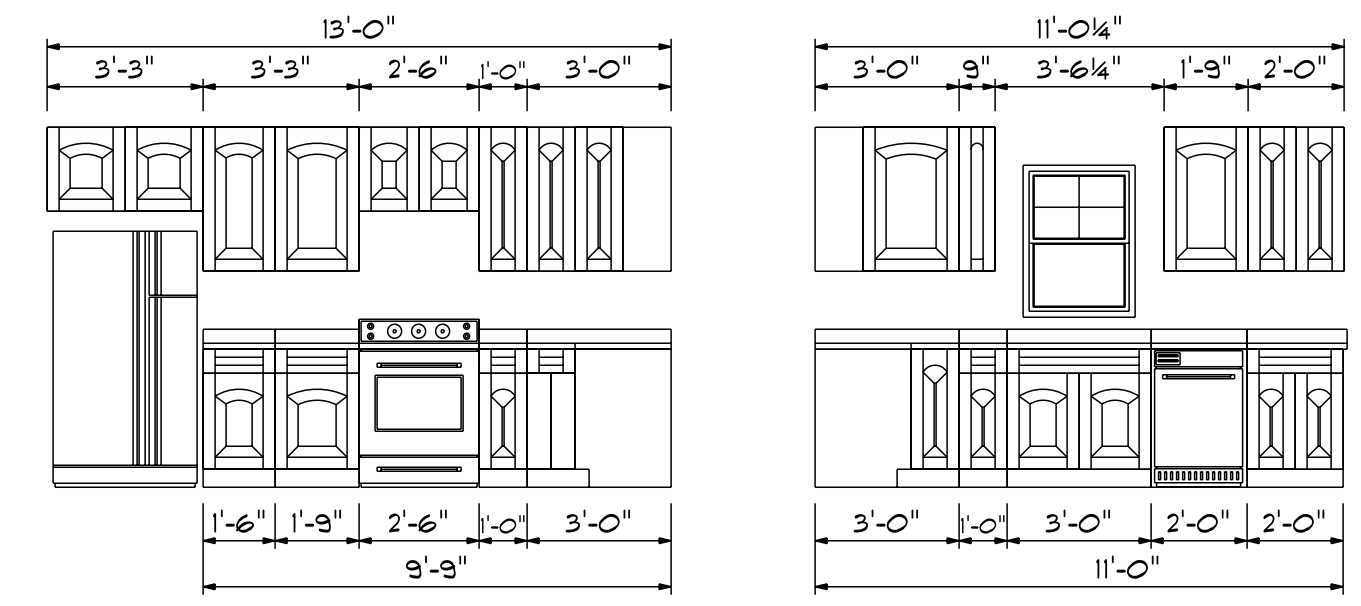
The Westbrook



First Floor Plan

Scale: 1/4" = 1'-0"

Kitchen Cabinets



| FIRST FLOOR OPENING SCHEDULE | | | |
|------------------------------|----------------|-------|-------|
| PRODUCT CODE | SIZE | HINGE | COUNT |
| 36X80 COLONIAL A 1 | 3'-0" | L | 1 |
| 192X96 - 8 PANEL - 4 WINDOW | 16'-0" | U | 1 |
| 72X80 SLIDING FRENCH 2 | 6'-0" | NL | 1 |
| 2-0 Door Unit | 2'-0" | L | 1 |
| 2-0 Door Unit | 2'-0" | R | 1 |
| 2-4 Door Unit | 2'-4" | L | 1 |
| 2-4 Door Unit | 2'-4" | R | 1 |
| 2-8 Door Unit | 2'-8" | R | 1 |
| 24X24 CASEMENT 1 | 2'-0" x 2'-0" | N | 2 |
| 24X32 Single | 2'-4" x 3'-2" | N | 1 |
| 24x310 single | 2'-4" x 3'-10" | N | 1 |
| 28x52 twin | 5'-4" x 5'-2" | NN | 1 |

Areas

| | |
|--------------|------|
| First Floor | 892 |
| Second Floor | 1316 |
| ===== | |
| Total Heated | 2208 |
| Garage | 512 |
| Front Porch | 85 |

DATE: 8/25/2020

REVISED

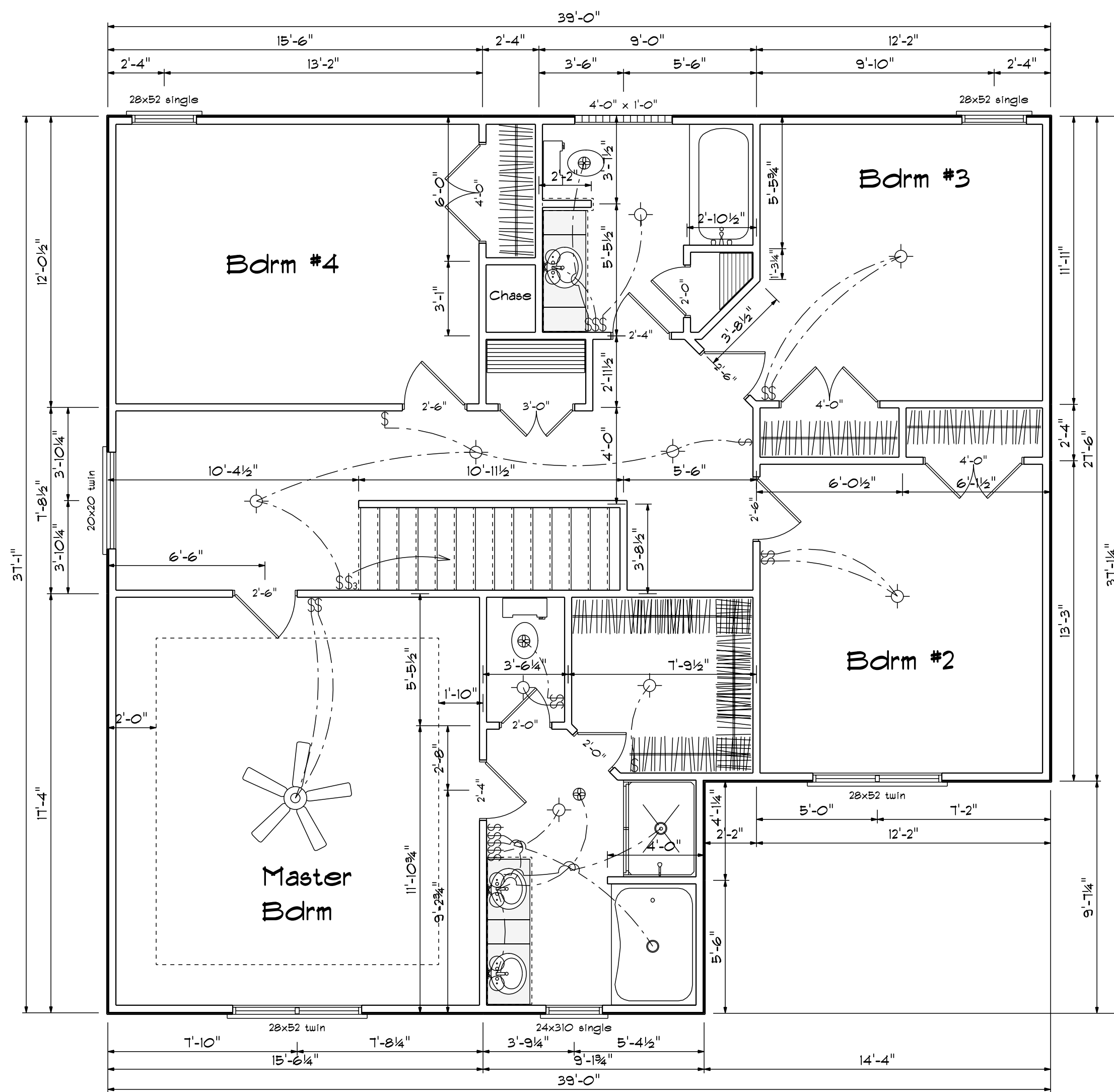
DRAWING#

SCALE: 1/4"

DRAWN BY

APPROVED

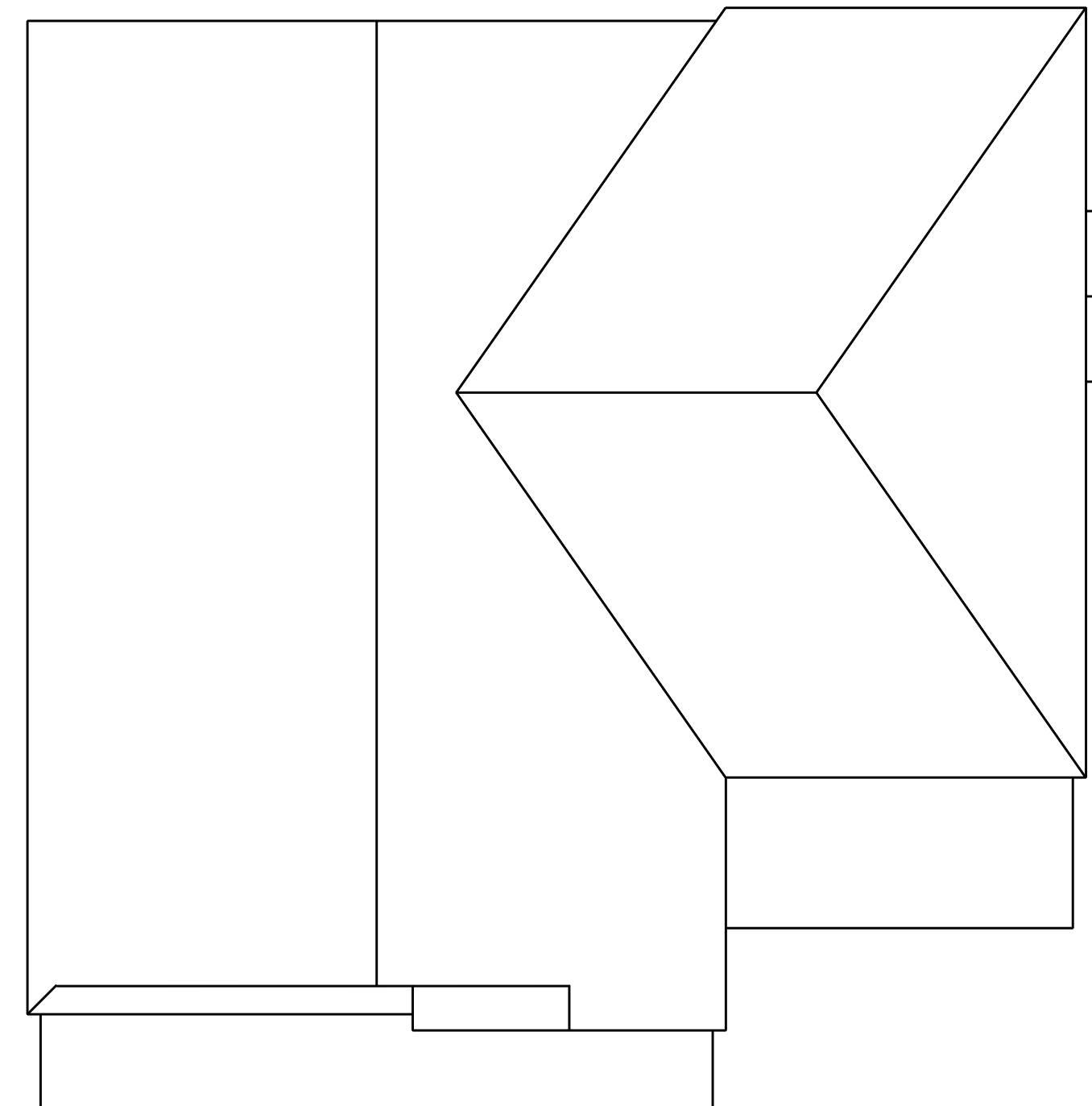
The Westbrook



Second Floor Plan

Scale: 1/4" = 1'-0"

| SECOND FLOOR OPENING SCHEDULE | | | |
|-------------------------------|----------------|-------|-------|
| PRODUCT CODE | SIZE | HINGE | COUNT |
| 2-0 Door Unit | 2'-0" | L | 3 |
| 2-4 Door Unit | 2'-4" | R | 1 |
| 2-4 Door Unit | 2'-4" | L | 1 |
| 2-6 Door Unit | 2'-6" | L | 2 |
| 2-6 Door Unit | 2'-6" | R | 2 |
| 3-0 Doublehung Door Unit | 3'-0" | LR | 1 |
| 4-0 Doublehung Door Unit | 4'-0" | LR | 3 |
| 20x20 twin | 4'-0" x 3'-2" | NA | 1 |
| 24x310 single | 2'-4" x 3'-10" | N | 1 |
| 28x52 single | 2'-8" x 5'-2" | N | 2 |
| 28x52 twin | 5'-4" x 5'-2" | NN | 2 |
| 12X12 GLASS BLOCK | 4'-0" x 1'-0" | N | 1 |



Roof Plan

DATE: 8/25/2020

REVISED

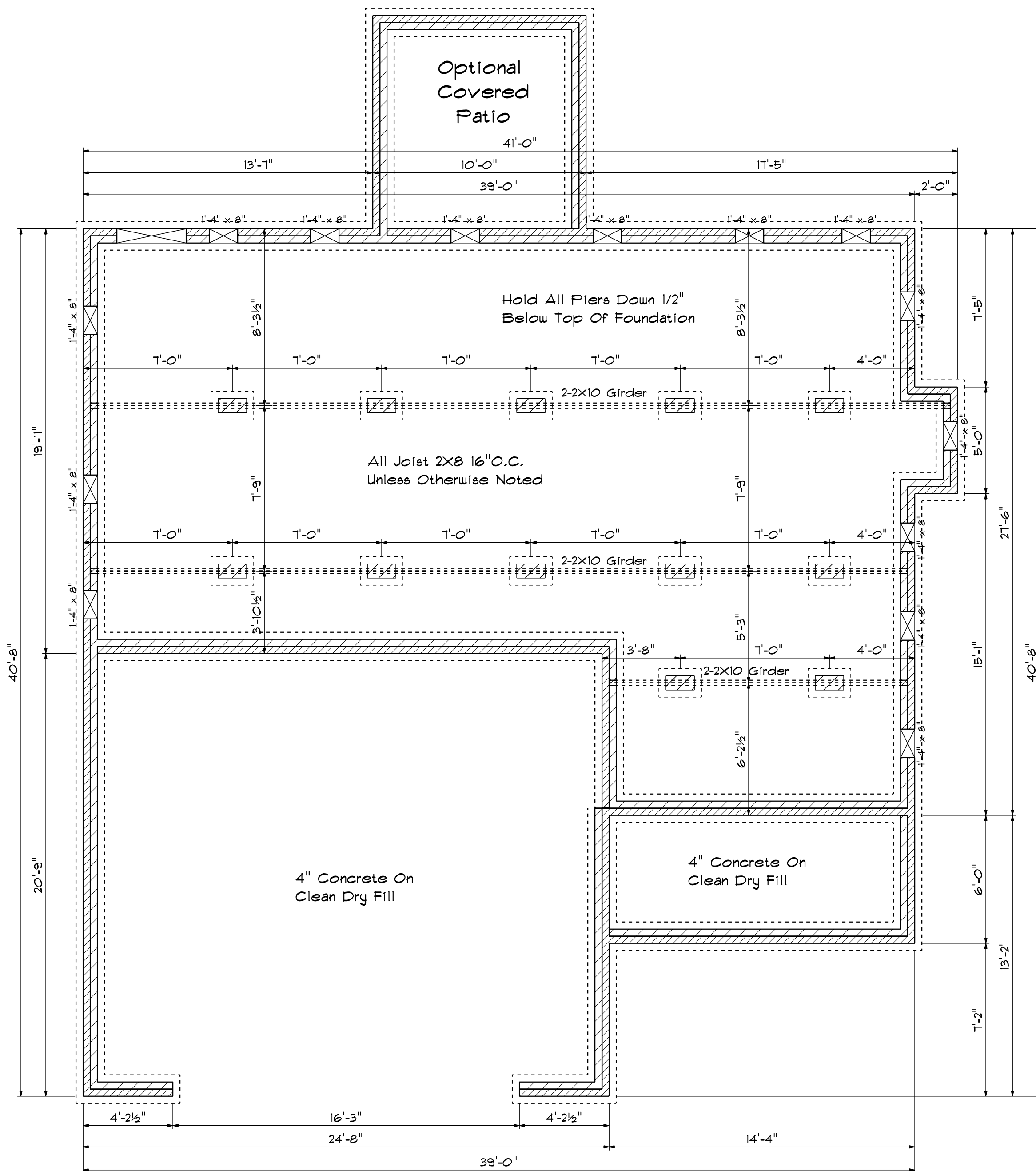
DRAWING#

SCALE: 1/4"

DRAWN BY

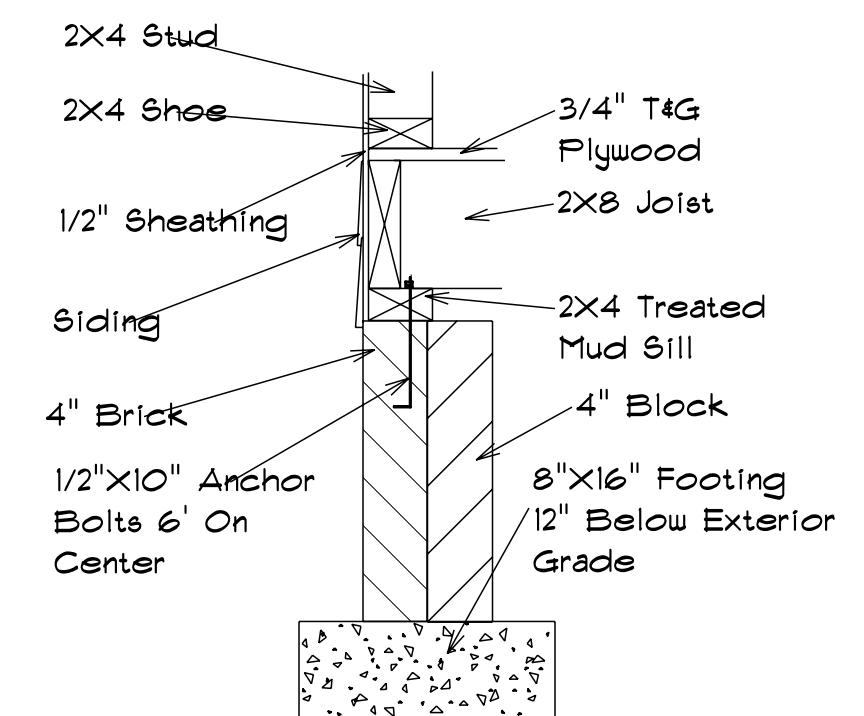
APPROVED

The Westbrook

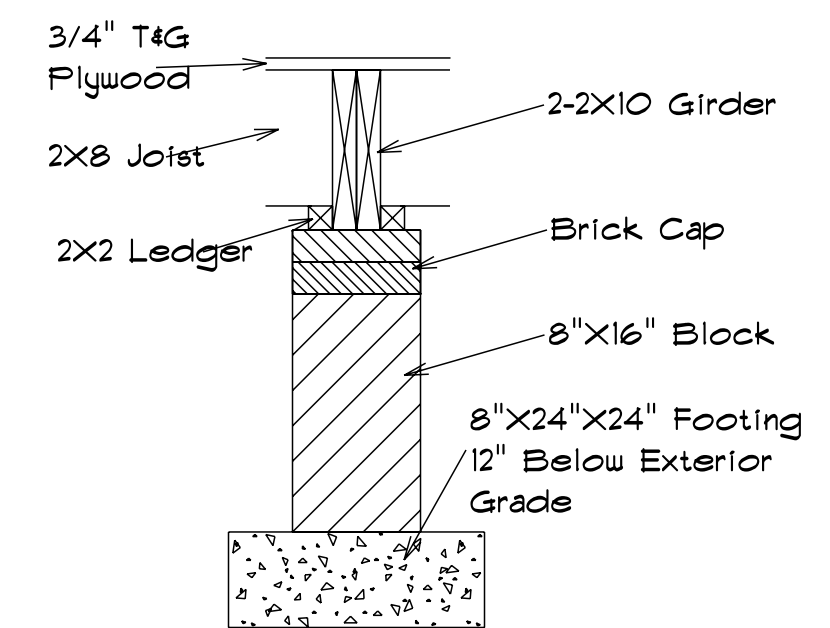


Foundation Plan

Foundation Detail



Footing & Pier Detail

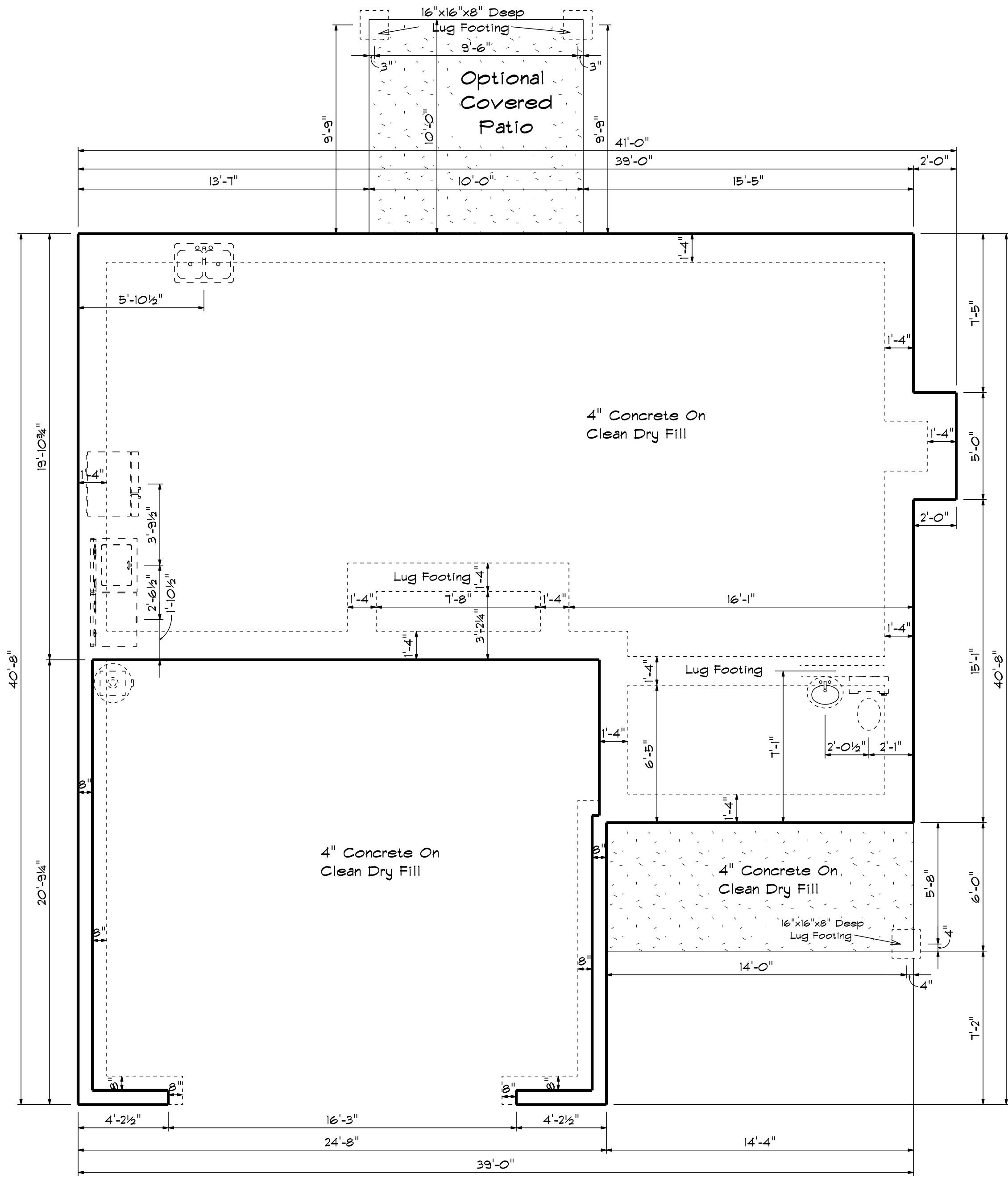


FOUNDATION VENTILATION

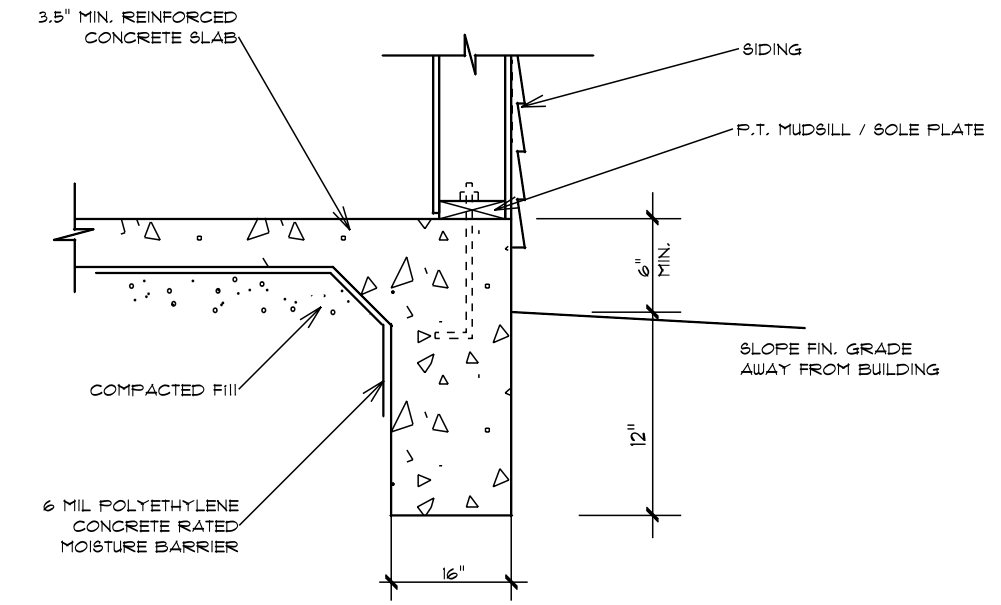
892 Sq.Ft. Foundation Area
 Requires 5.94 Sq.Ft. Ventilation.
 With 6 Mil. Poly, Plans Indicate
 Vents For Adequate Cross
 Ventilation.

| |
|-----------------|
| DATE: 8/25/2020 |
| REVISID |
| DRAWING# |
| SCALE: 1/4" |
| DRAWN BY |
| APPROVED |

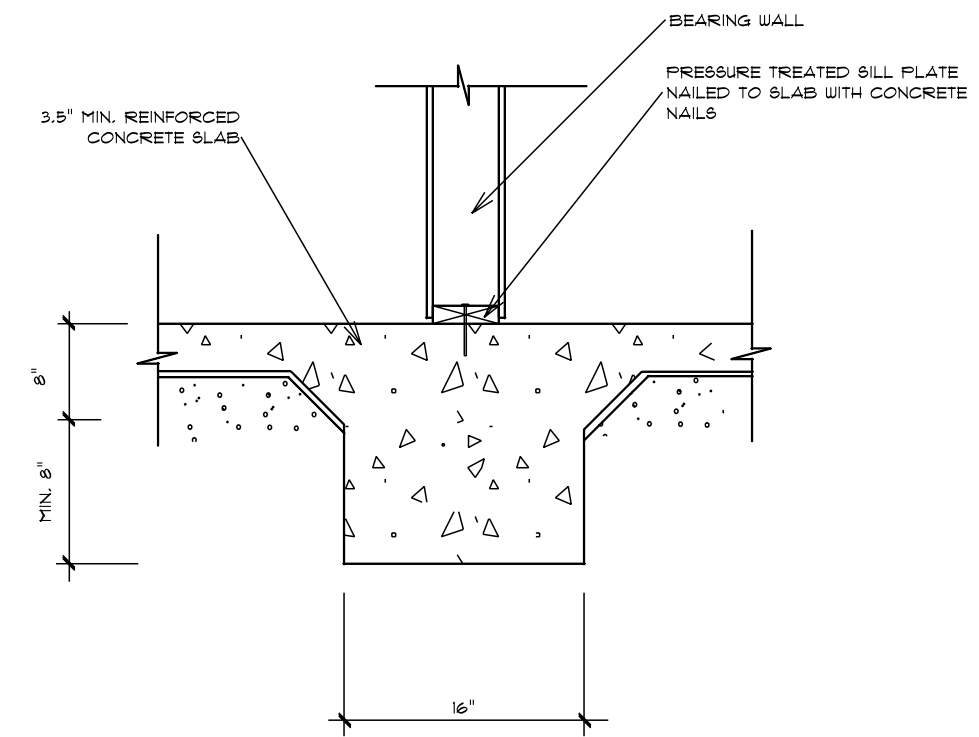
The Westbrook



Foundation Plan



TURN-DOWN FOOTING DETAIL



INTEGRAL SLAB FOOTING DETAIL AT BEARING WALL

DATE: 8/25/2020

REVISED

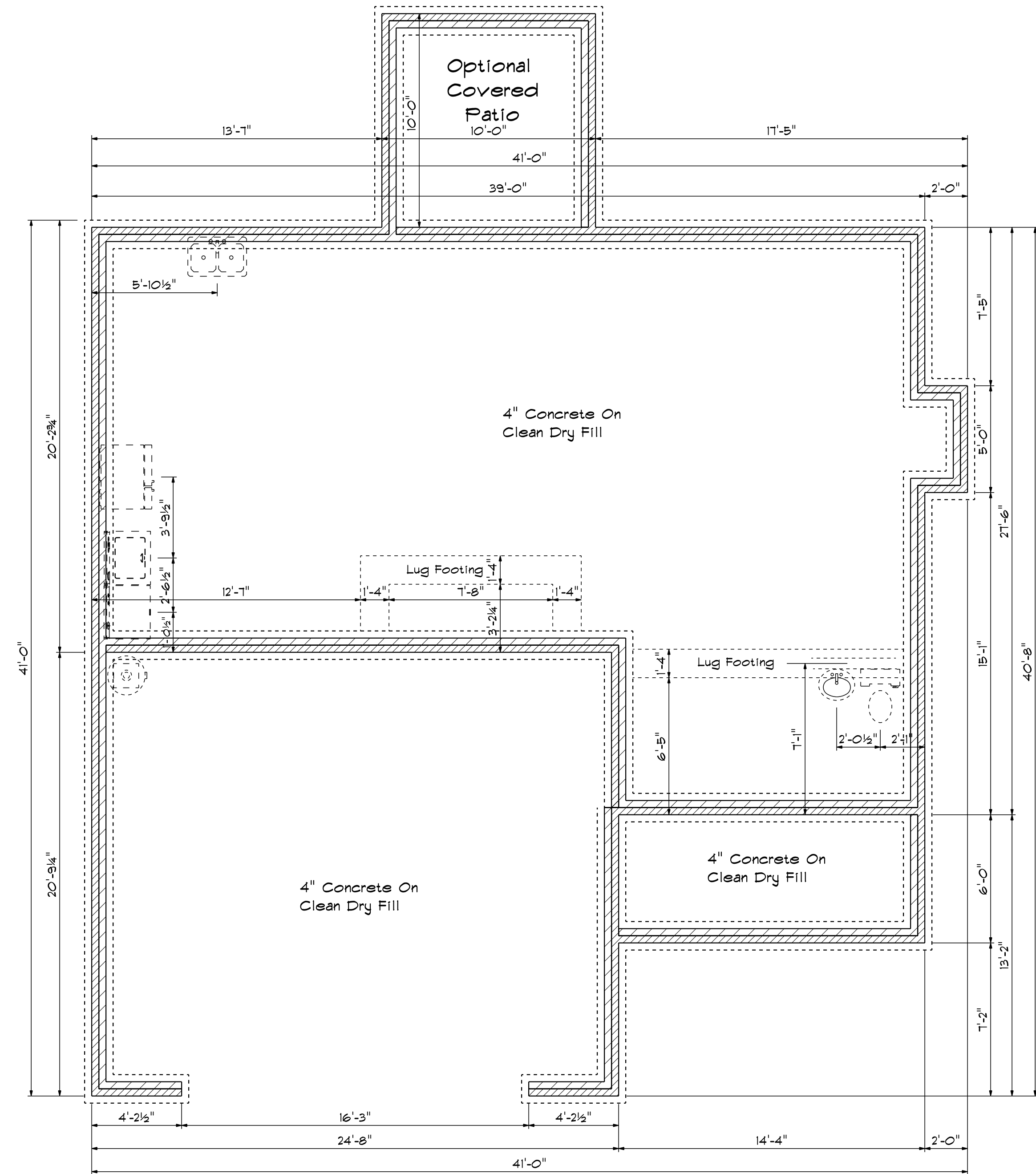
DRAWING#

SCALE: 1/4"

DRAWN BY

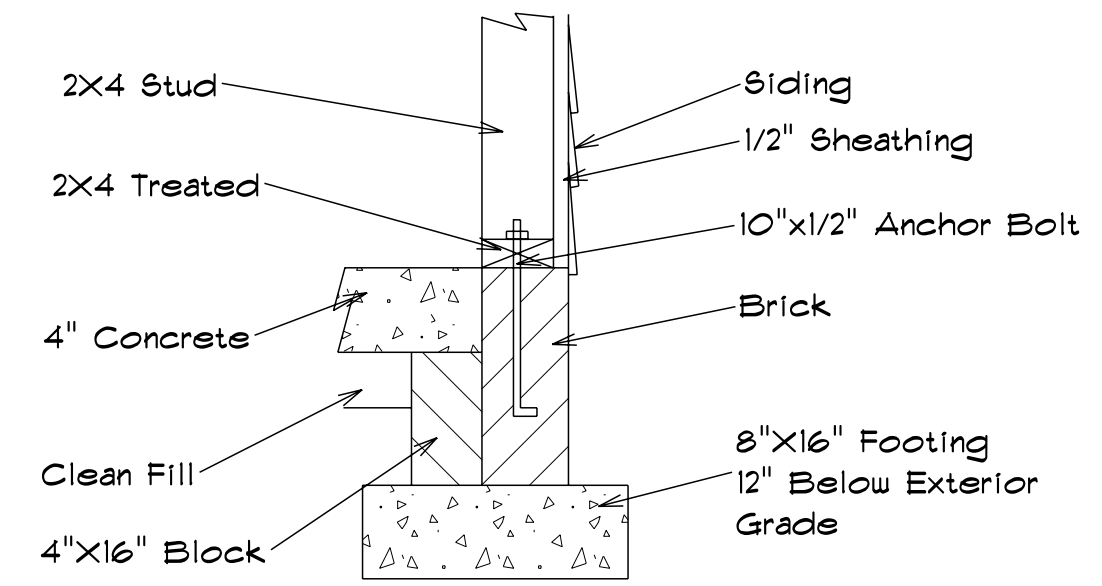
APPROVED

The Westbrook

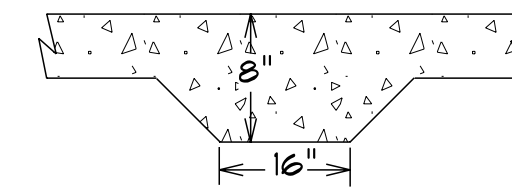


Foundation Plan

Foundation Detail Siding



Lug Footing Detail



| |
|-----------------|
| DATE: 8/25/2020 |
| REVISED |
| DRAWING# |
| SCALE: 1/4" |
| DRAWN BY |
| APPROVED |

The Westbrook