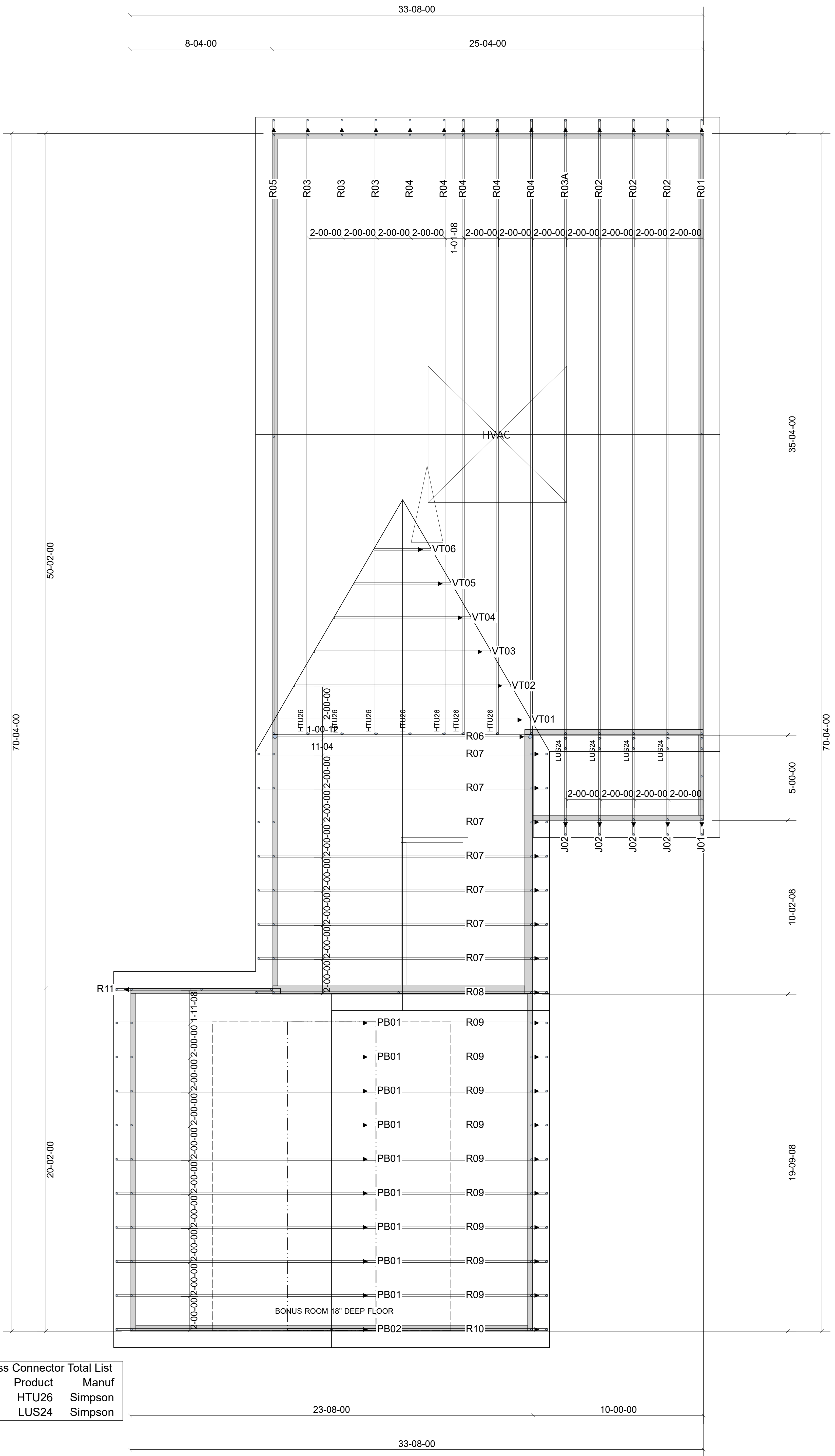


WARNING! Long span trusses, 60' or greater in length, require extreme care and experience for proper and safe handling and installation. For general handling and installation guidance, see the "Guide to Good Practice for Handling, Installing, Restraining & Bracing of Metal Plate Connected Wood Trusses" ("BCSI"), JOINTLY PRODUCED BY SBCA and TPI. For project specific guidance, consult with a registered design professional. ATLANTIC assumes no responsibility for the handling, installation or bracing of trusses.



Truss Connector Total List		
Qty	Product	Manuf
7	HTU26	Simpson
4	LUS24	Simpson

▲ = LEFT END OF TRUSS

NOT FOR CONSTRUCTION



Moncks Corner/Easley, SC (800) 475-3999
Sparta, NC (336) 372-2226

REVISIONS:

Client: **CAPITOL CITY HOMES, LLC**
Job: **LOT 1160 CARRIAGE CIRCLE**
Plan Information:
NICKLAUS-FARM

NOT TO SCALE

Date: / /

Drawn By:
AMH

Job #: 20-5716-R01
Sales Rep: KYLE GIBSON
Phone:

ROOF