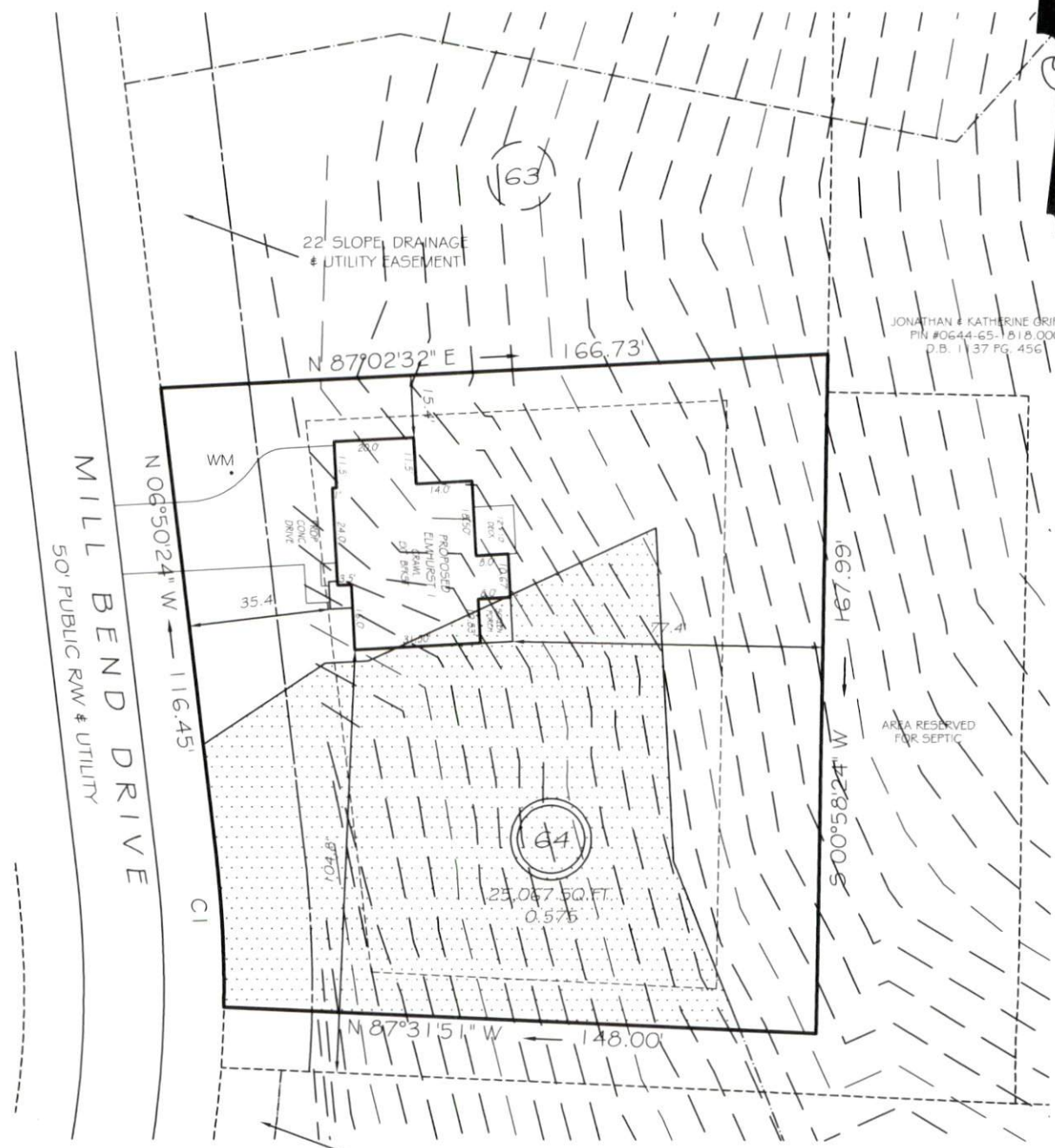


I, MICHAEL P. GRIFFIN, certify that under my direction and supervision this map was drawn from an actual field survey; that the error of closure of the survey as calculated by coordinates is 1:10,000+; that the area shown hereon was calculated by coordinates.

Witness my hand and seal this day of MONTH 2020.

BK. 2019 PGS 421-424
HARNETT CO. REGISTRY



JONATHAN & KATHERINE GRIFFIN
PIN #0644-65-1818.000
D.B. 1137 PG. 456

IMPERVIOUS AREAS

HOUSE	1780 SQ. FT.
DRIVE & WALKS	981 SQ. FT.
PATIO	000 SQ. FT.
TOTAL	2761 SQ. FT.
ALLOWED	3250 SQ. FT.

15' TEMPORARY CONSTRUCTION
& LANDSCAPE EASEMENT

SETBACKS

FRONT	35'
REAR	25'
SIDE	10'
CORNER SIDE	20'

UNSUITABLE SOILS

CI R=275.00' L=37.45' N02°56'21"W 37.42'

PRELIMINARY
NOT FOR RECORDATION,
SALES OR CONVEYANCE

LEGEND

EIP	EXISTING IRON PIPE	FES	FLARED END SECTION
IPS	IRON PIPE SET	WM	WATER METER
R/W	RIGHT OF WAY	CO	CLEAN OUT
N/F	NOW OR FORMERLY	FH	FIRE HYDRANT
EIS	EXISTING IRON STAKE	CB	CATCH BASIN

