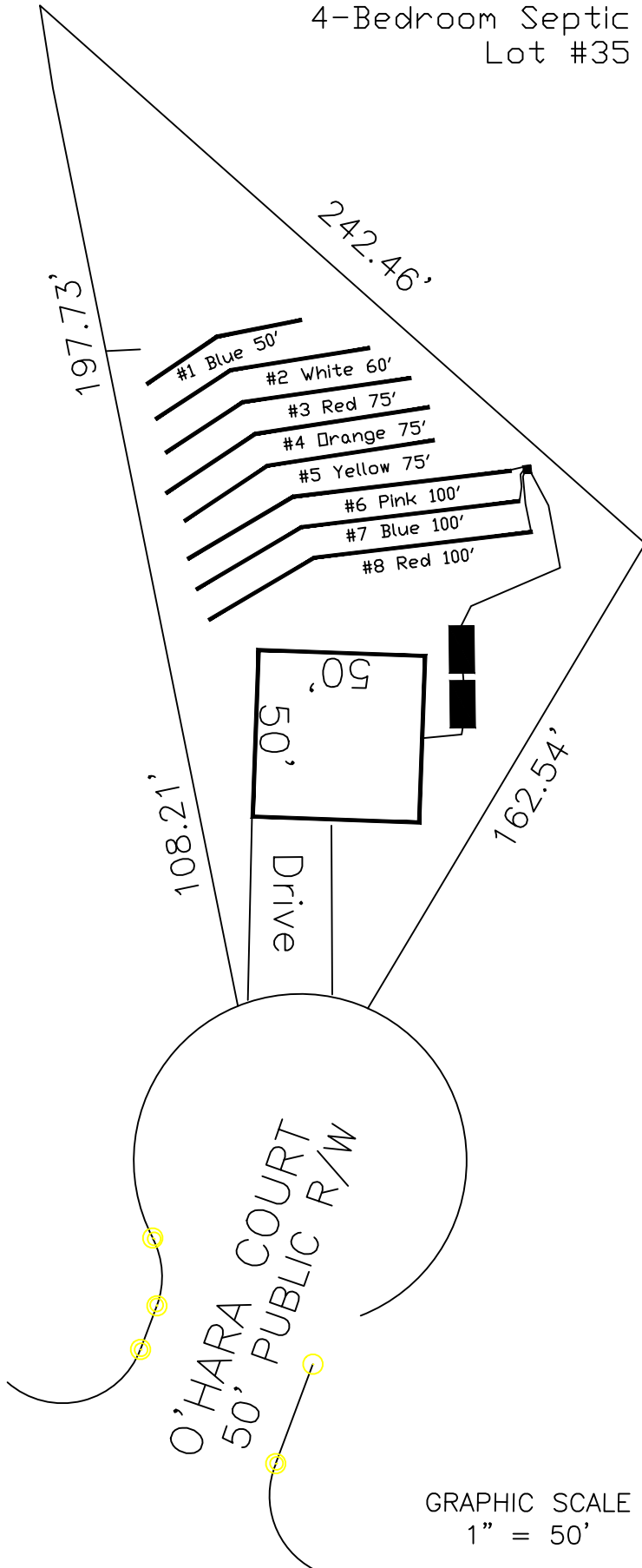


Highland Grove
4-Bedroom Septic Proposal
Lot #35

35

25,070 SQ.FT.



System: Pump to D-Box.
Lines: 6-8 (300')
0.4 LTAR
24" Trench Bottom
Accepted Status System
Repair: Pump to D-Box.
Lines: 1-5 (300')
0.4 LTAR
24 Trench Bottom
Accepted Status System

This drawing represents a preliminary septic plan made prior to final construction activities. A revised plan may need to be reworked at time of permitting.

Adams
Soil Consulting
919-414-6761
Job #561