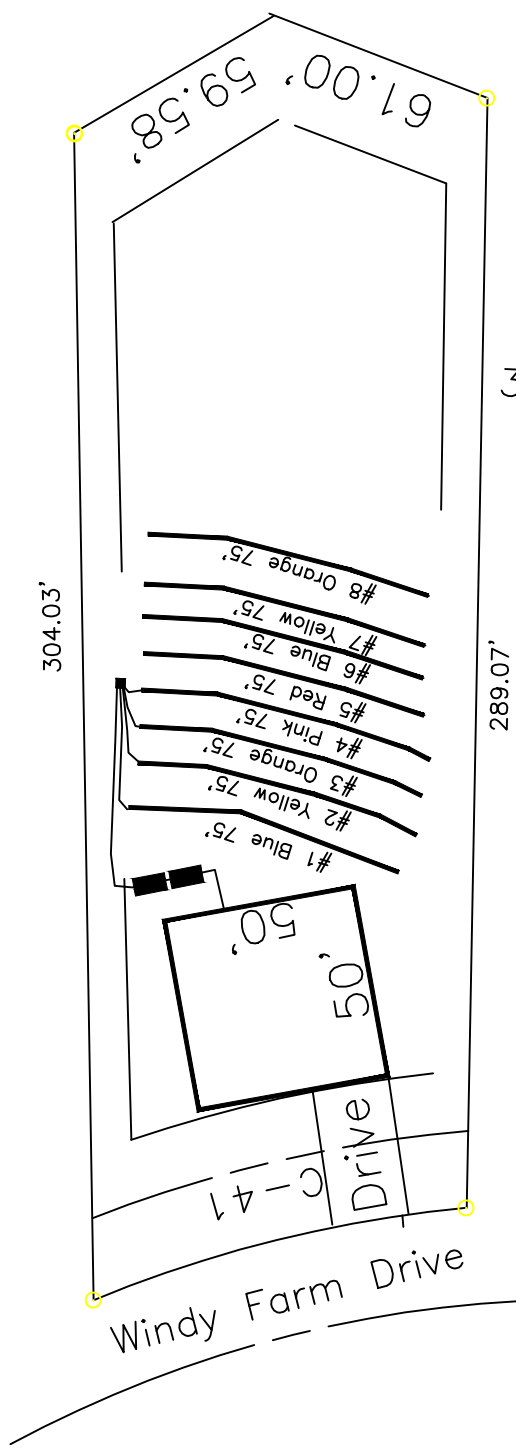


Highland Grove 4-Bedroom Septic Proposal Lot #30



31,562 SQ.FT.

30

This drawing represents a preliminary septic plan made prior to final construction activities. A revised plan may need to be reworked at time of permitting.

System: Pump to D-Box
 Lines: 1-4 (300')
 0.4 LTAR
 24" Trench Bottom
 Accepted Status System
 Repair: Pump to D-Box.
 Lines: 5-8 (300')
 0.4 LTAR
 24 Trench Bottom
 Accepted Status System

GRAPHIC SCALE
1" = 50'



Adams
 Soil Consulting
 919-414-6761
 Job #561