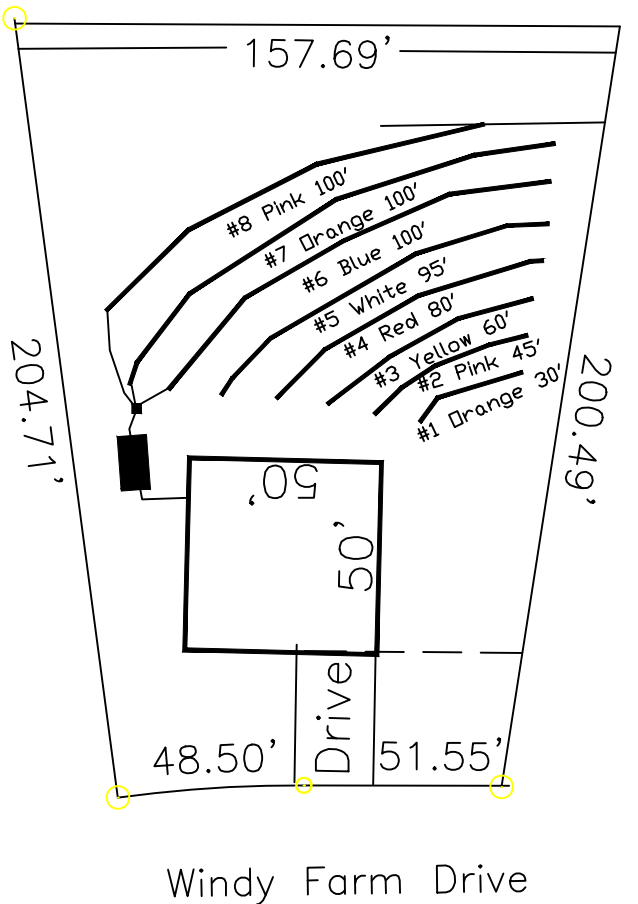


Highland Grove 3-Bedroom Septic Proposal Lot #9

9

25,705 SQ.FT.



This drawing represents a preliminary septic plan made prior to final construction activities. A revised plan may need to be reworked at time of permitting.

*If plumbing is not sufficient a separate pump and tank may be required.

System: Gravity to D-Box
 Lines: 6-8 (300')
 0.3 LTAR
 24" Trench Bottom
 Accepted Status System
 Repair: Pressure Manifold
 Lines: 1-5 (300')
 0.3 LTAR
 24 Trench Bottom
 Accepted Status System

Adams
 Soil Consulting
 919-414-6761
 Job #561