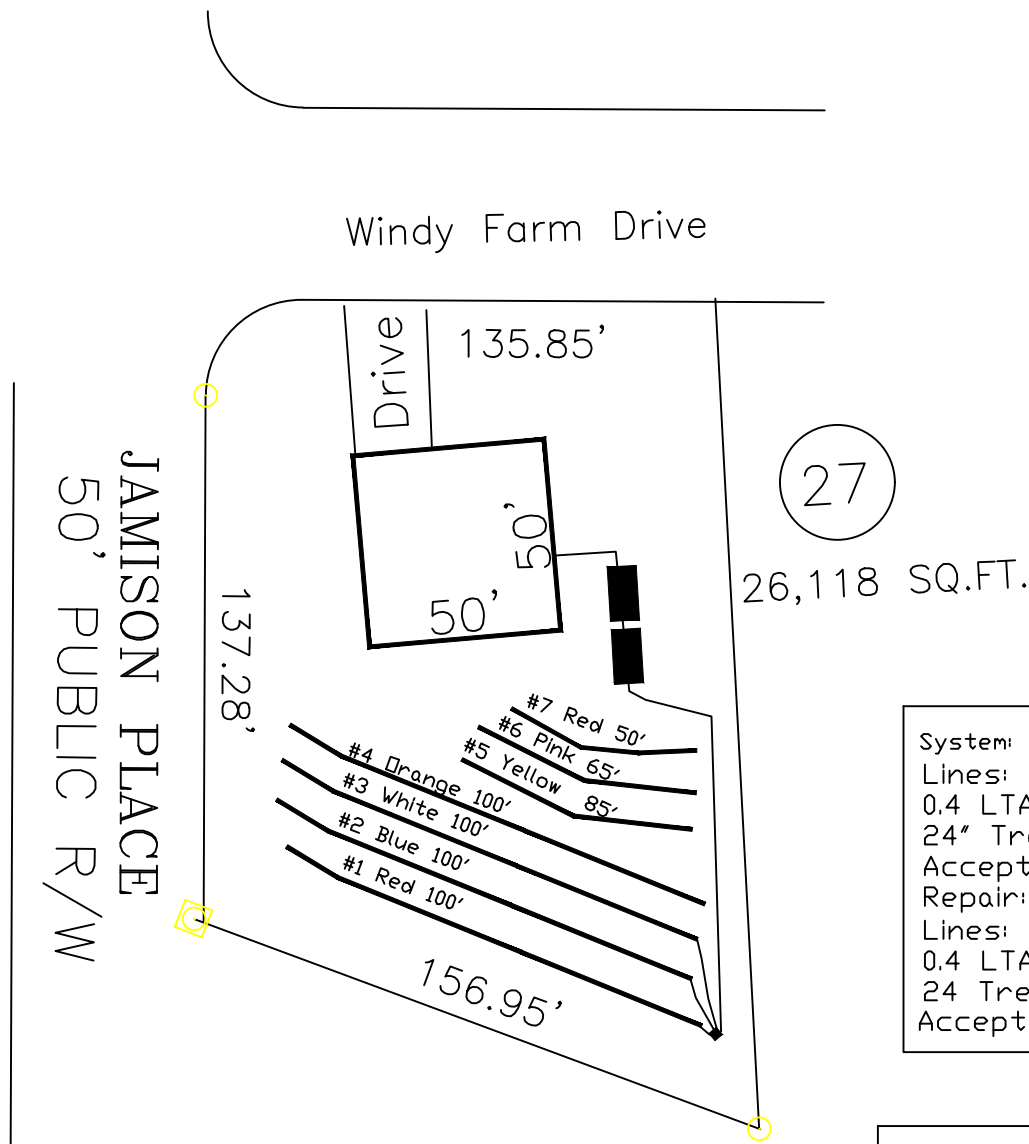


Highland Grove
 4-Bedroom Septic Proposal
 Lot #27



JAMISON PLACE
 50' PUBLIC R/W

27
 26,118 SQ.FT.

System: Pump to D-Box
 Lines: 1-3 (300')
 0.4 LTAR
 24" Trench Bottom
 Accepted Status System
 Repair: Pump to D-Box
 Lines: 4-7 (300')
 0.4 LTAR
 24 Trench Bottom
 Accepted Status System

This drawing represents a preliminary septic plan made prior to final construction activities. A revised plan may need to be reworked at time of permitting.

GRAPHIC SCALE
 1" = 50'



Adams
 Soil Consulting
 919-414-6761
 Job #561