



THIS PLAN IS DESIGNED TO MEET THE REQUIREMENTS OF THE NORTH CAROLINA RESIDENTIAL CODE 2018 EDITION

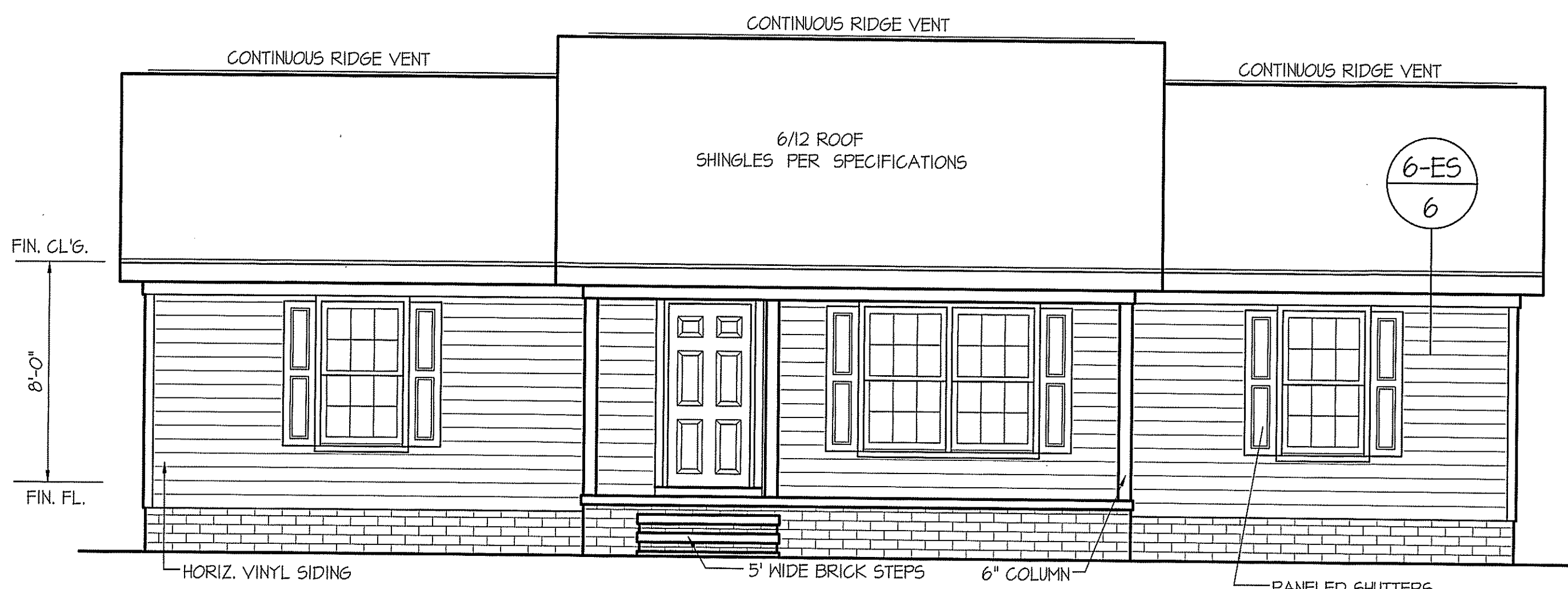
NOTICE TO CONTRACTOR
All construction must comply with current NC Building Codes and is subject to field inspection and verification.

APPROVED
Limited building only review
Permit holder responsible for full compliance with the code.

01/12/2021

DATE:
MAY 13, 2019

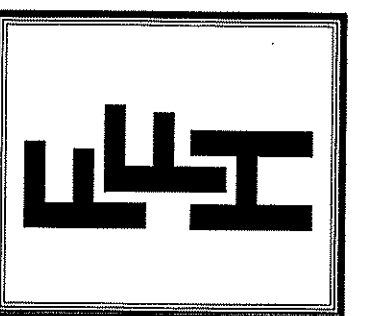


WIND ZONES (PER TABLE R301.2(4))

COUNTY	MPH
HARNETT	120
JOHNSTON	120
SAMPSON	130
WAKE	115

FRONT ELEVATION
SCALE: 1/4" = 1'-0"

FREEDOM FAMILY HOMES
P.O. BOX 608
DUNN, N.C. - 28335
O: (910) 892-1231 FAX: (910) 892-5680
© 2019, FREEDOM FAMILY HOMES



FREEDOM FAMILY HOMES
JEFFERSON

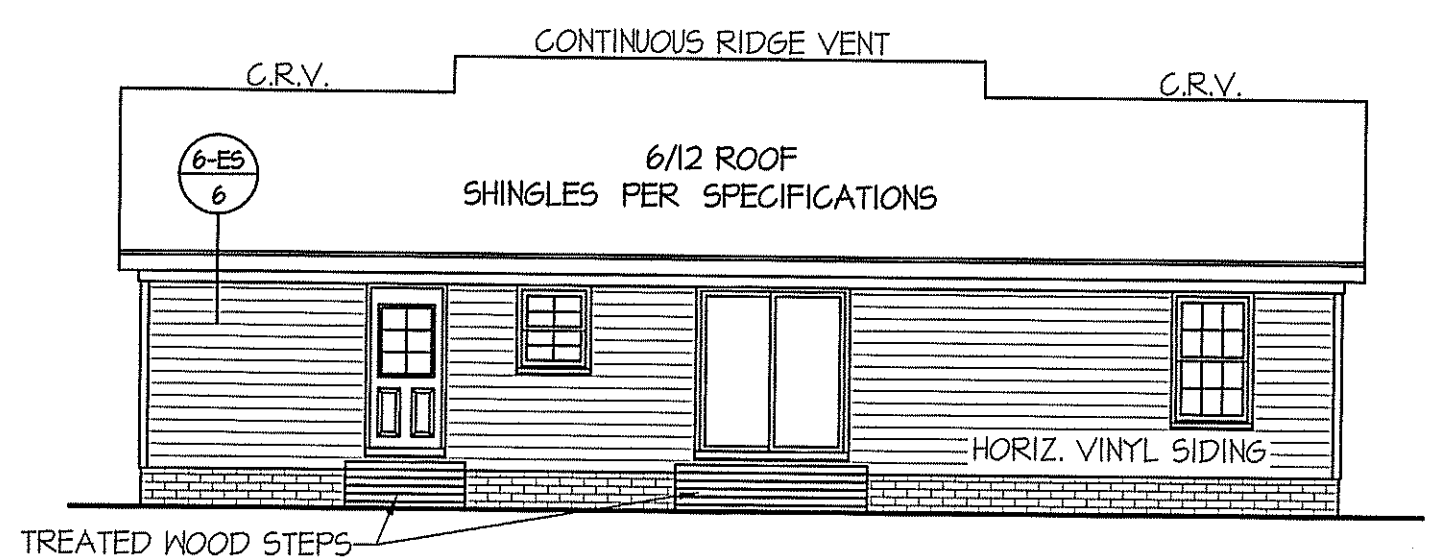
PLAN:

SHEET NO.
1

INSULATION and FENESTRATION REQUIREMENTS

CLIMATE ZONE	ZONE-3	ZONE-4
FENESTRATION U-FACTOR	0.35	0.35
GLAZED FENESTRATION SHGC	0.30	0.30
MINIMUM CEILING R-VALUE	R-38	R-38
MINIMUM WALL R-VALUE	R-15, 13+2.5	R-15, 13+2.5
MINIMUM FLOOR R-VALUE	R-19	R-19
MIN. CRAWL SPACE WALL R-VALUE	5/13	10/15
MIN. SLAB R-VALUE	0	R-10

PROVIDE STEPS AS REQUIRED
GRADE MAY VARY - BUILDER TO VERIFY



ROOF VENTILATION REQ'MTS.
1320 ATTIC SQ. FT. / 300 = 4.40

PROVIDED ON PLAN
48 LF. - RIDGE VENT = 7.87
100 LF. SOFFIT VENT = 6.25
TOTAL = 14.12 S.F. FREE NET AREA

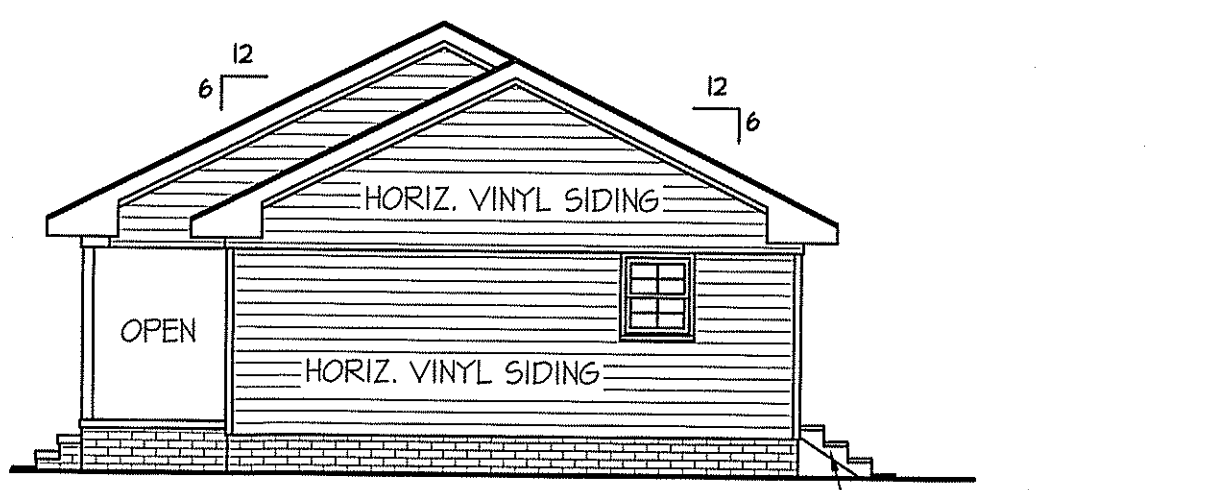
ALL EXTERIOR WALLS TO BE SHEATHED WITH CS-WSP (1/16" OSB) IN ACCORDANCE WITH SECTION R602.10.3 UNLESS OTHERWISE NOTED.

REAR ELEVATION
SCALE: 1/8" = 1'-0"

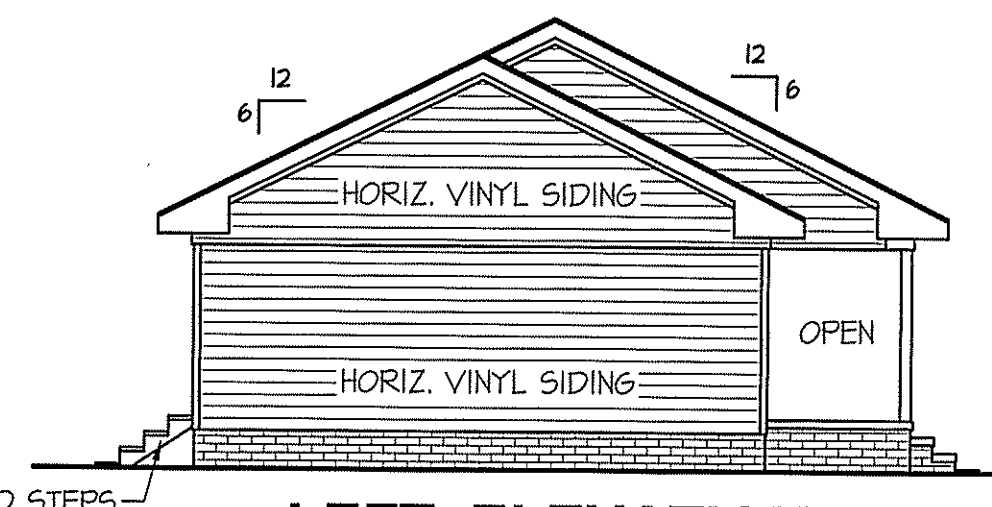
INSULATION and FENESTRATION REQUIREMENTS

CLIMATE ZONE	ZONE-3	ZONE-4
FENESTRATION U-FACTOR	0.35	0.35
GLAZED FENESTRATION SHGC	0.30	0.30
MINIMUM CEILING R-VALUE	R-30	R-38
MINIMUM WALL R-VALUE	R-13	R-15, 13+2.5
MINIMUM FLOOR R-VALUE	R-19	R-19
MIN. CRAWL SPACE WALL R-VALUE	5/10	10/13
MIN. SLAB R-VALUE	0	R-10

PROVIDE STEPS AS REQUIRED
GRADE MAY VARY - BUILDER TO VERIFY



RIGHT ELEVATION
SCALE: 1/8" = 1'-0"



LEFT ELEVATION
SCALE: 1/8" = 1'-0"

FILE: JEFFERSON Plan - COMPUTER FILED UNDER 2019-FREEDOM FAMILY HOMES

DATE:

MAY 13, 2019

FREEDOM FAMILY HOMES

P.O. BOX 608
DUNN, N.C. - 28335
O: (910) 892-1231 FAX: (910) 892-5680
© 2019, FREEDOM FAMILY HOMES



FREEDOM FAMILY HOMES

JEFFERSON

PLAN:

SHEET NO.

2

ALL INTERIOR AND EXTERIOR
LOAD BEARING HEADERS
WILL BE 2x10 #2 SPF
UNLESS OTHERWISE NOTED.

HEADER SCHEDULE		
SYMBOL #	SIZE	JACKS
H-1	(2) 2x10	1
H-2	(2) 2x10	2
H-3	(2) 2x8	2
H-4	(2) 2x12	2
H-5	(2) 1.75 x 9.25 LVL	3

ALL EXTERIOR WALLS TO BE
SHEATHED WITH OSB (1/16" OSB)
IN ACCORDANCE WITH SECTION
R602.10.3 UNLESS OTHERWISE NOTED.

WIND ZONES (PER TABLE R301.2(4))	
COUNTY	MPH
HARNETT	120
JOHNSTON	120
SAMPSON	130
WAKE	115

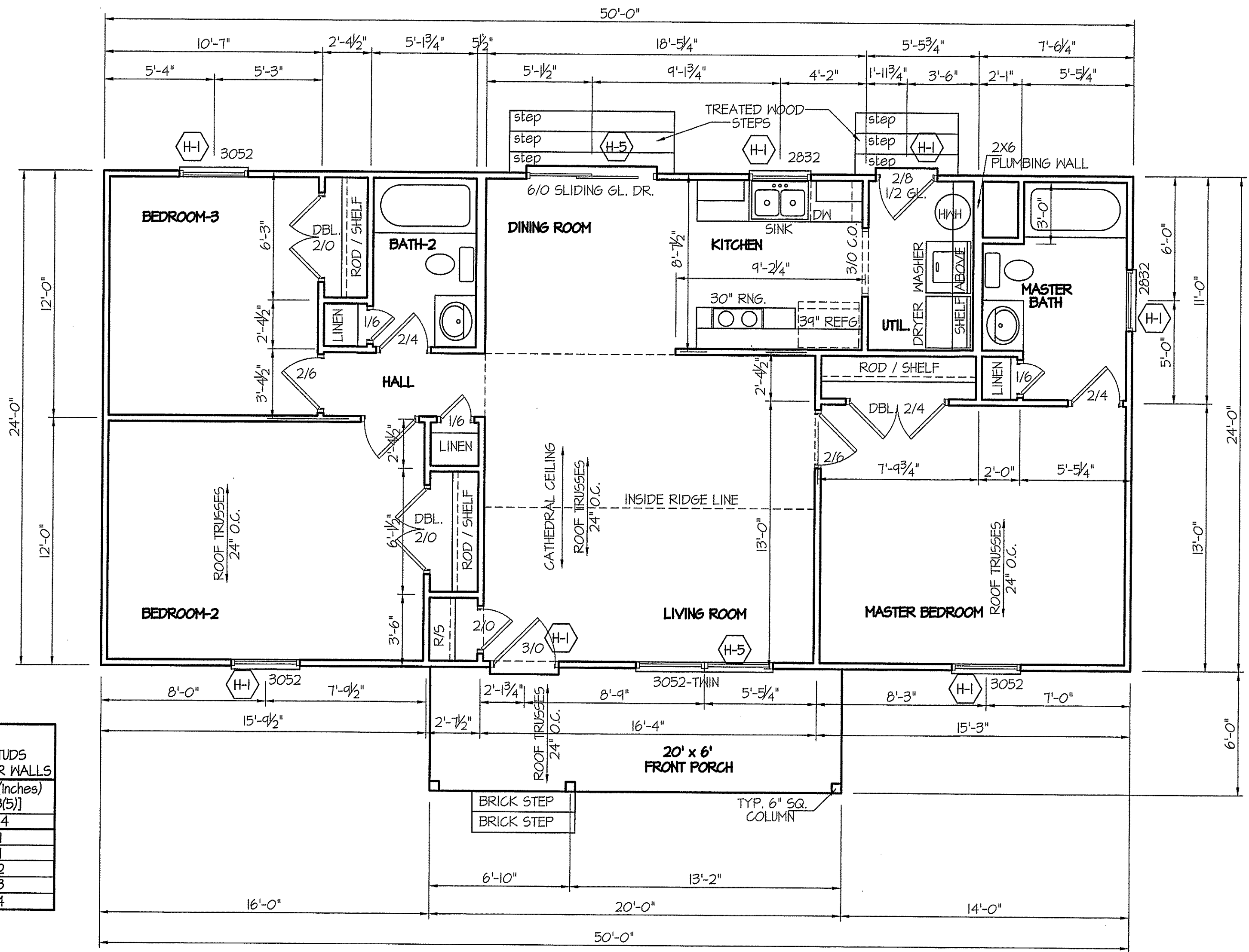


TABLE R602.1.5 MINIMUM NUMBER OF FULL HEIGHT STUDS AT EACH END OF HEADERS IN EXTERIOR WALLS		
HEADER SPAN (feet)	MAX. STUD SPACING (inches) [per Table R602.3(5)]	
	16	24
< 3'	1	1
4'	2	1
8'	3	2
12'	5	3
16'	6	4

GIRDER AND HEADER SIZES AND JACK STUD
REQUIREMENTS ON EXTERIOR AND INTERIOR LOAD
BEARING WALLS ARE TO COINCIDE WITH TABLE
EXT.-R602.7 (1) AND INT.-R602.7 (2).

SECTION R407-COLUMNS
R407.3 STRUCTURAL REQUIREMENTS.
THE COLUMNS SHALL BE RESTRAINED TO PREVENT LATERAL
DISPLACEMENT AT THE TOP AND BOTTOM END. WOOD COLUMNS
SHALL BE NOT LESS IN NOMINAL SIZE THAN 4 INCHES BY 4 INCHES
(102 mm BY 102 mm). STEEL COLUMNS SHALL BE NOT LESS THAN
3-INCH-DIAMETER (76 mm) SCHEDULE 40 PIPE MANUFACTURED IN
ACCORDANCE WITH ASTM A53 GRADE B OR APPROVED EQUIVALENT.

8' CEILINGS

FLOOR PLAN

SCALE: 1/4"=1'-0"

TOTAL FLOOR = 1200 SQUARE FEET (HEATED - FRAME)
120 SQUARE FEET (FRONT PORCH)

FILE: JEFFERSON Plan - COMPUTER FILED UNDER 2019-FREEDOM FAMILY HOMES

DATE:
MAY 13, 2019

FREEDOM FAMILY HOMES
P.O. BOX 608
DUNN, N.C. - 28335
O: (910) 892-1231 FAX: (910) 892-5680
© 2019, FREEDOM FAMILY HOMES

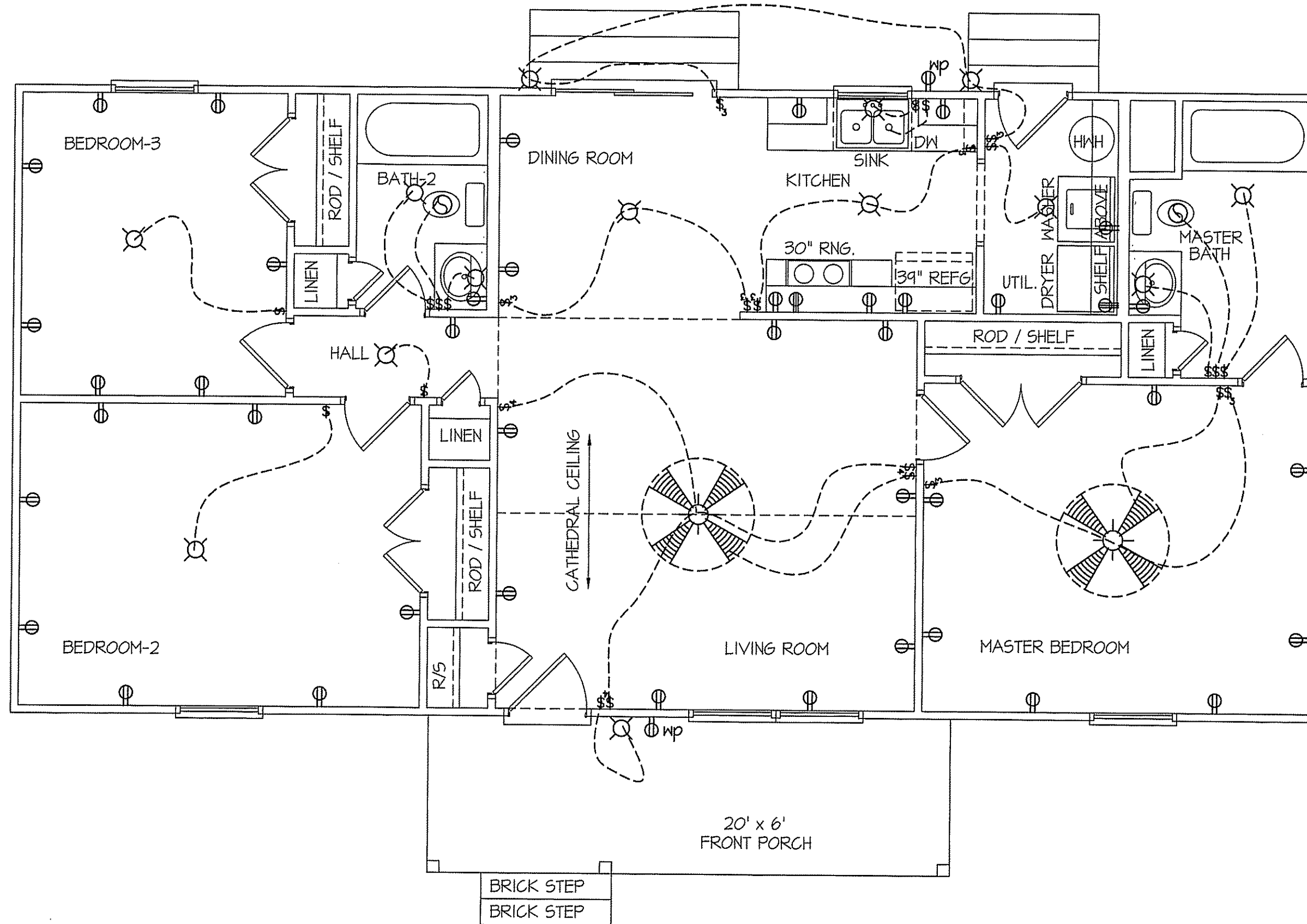


FREEDOM FAMILY HOMES
JEFFERSON

PLAN:

SHEET NO.

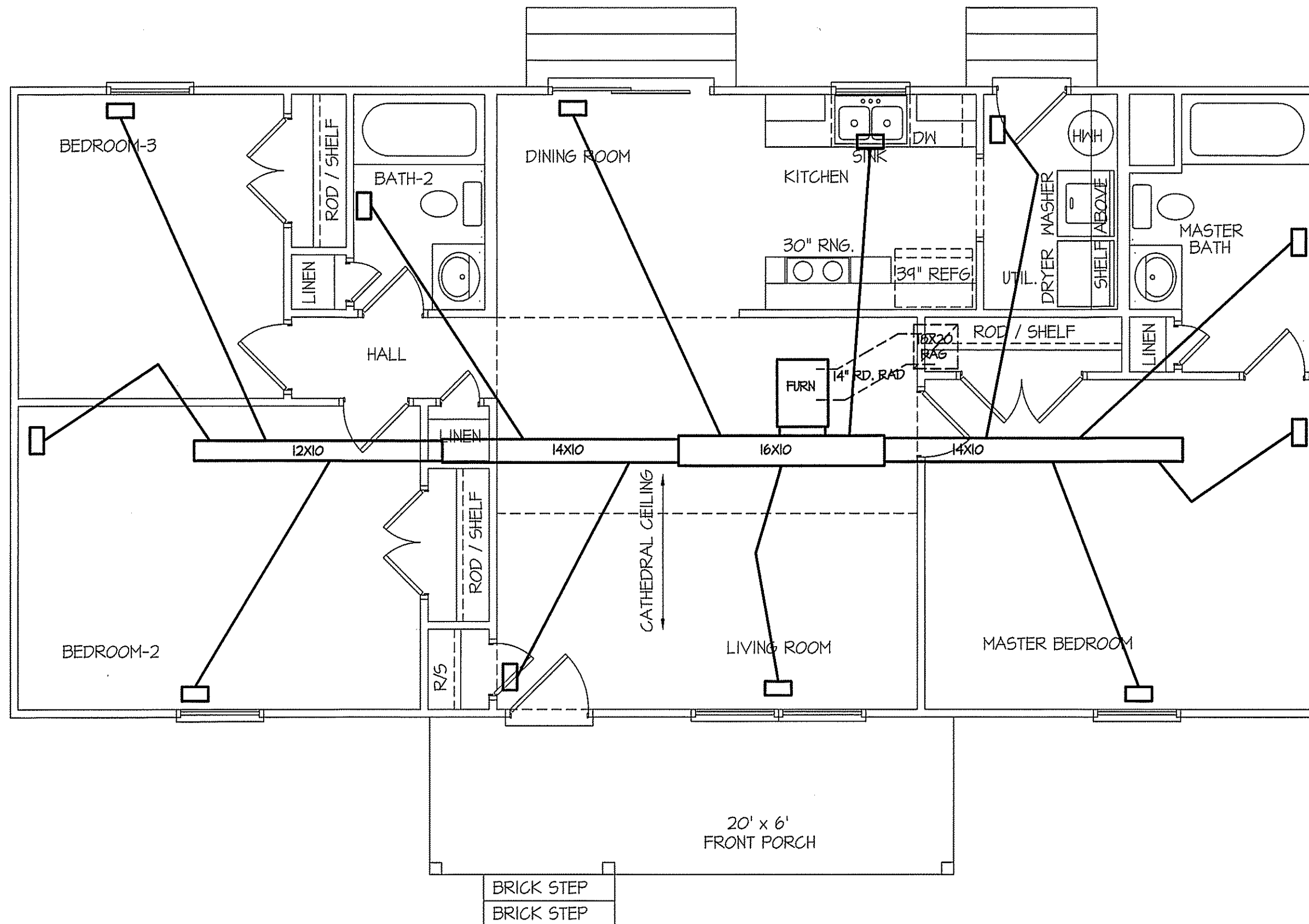
4



ELECTRICAL LEGEND		
<small>PROVIDE BURGLAR/SMOKE AND FIRE DETECTORS AS PER MANUFACTURER'S SPECIFICATIONS. PROVIDE CENTRAL VACUUM SYSTEM AS PER MANUFACTURER'S SPECIFICATIONS. ALL FANS ARE TO BE CONTROLLED BY VAR/SPEED AND DIRECTIONAL SWITCHES</small>		
⊕ SURF. MOUNTED LIGHT	⊕ TYPICAL WALL RECEP.	⊕ TYPICAL SWITCH
○ RECESSED LIGHT	⊕ TOP 1/2 HOT W/SWITCH	⊕ 3-WAY SWITCH
⊕ EYEBALL LIGHT	⊕ CEILING RECEPTACLE	⊕ 4-WAY SWITCH
⊕ FAN/LIGHT COMB.	⊕ FLOOR RECEPTACLE	⊕ DIMMER SWITCH
— FLUORESCENT TUBE	⊕ WATERPROOF RECEP.	⊕ ELEC. PANEL BOX
□ FLUOR. LIGHT FIXTURE	⊕ GROUND FAULT	⊕ T.V. CABLE RECEP.
⊕ EXHAUST FAN	⊕ DISPOSAL UNIT	⊕ TELEPHONE JACK
⊕ CL'G. FAN	⊕ 220 VOLT RECEPTACLE	⊕ COMPUTER JACK
⊕ FLOOD LIGHT		

8' CEILINGS
ELECTRICAL FLOOR PLAN
SCALE: 1/4"=1'-0"

TOTAL FLOOR = 1200 SQUARE FEET (HEATED - FRAME)
120 SQUARE FEET (FRONT PORCH)



HVAC FLOOR PLAN

SCALE: 1/4"=1'-0"

TOTAL FLOOR = 1200 SQUARE FEET (HEATED - FRAME)

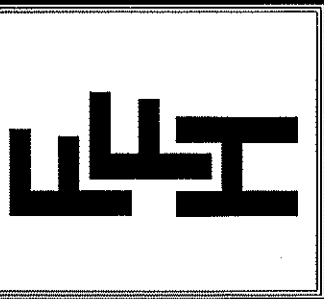
TOTAL HEAT GAIN = 25,560 BTUH

TOTAL HEAT LOSS = 36,115 BTUH

NOTE:
 HVAC CONTRACTOR TO VERIFY and PROVIDE OWNERS and BUILDER UNIT INFORMATION, BTUH REQUIREMENTS, and DUCT LAYOUTS BEFORE CONSTRUCTION BEGINS.

DATE:
 MAY 13, 2019

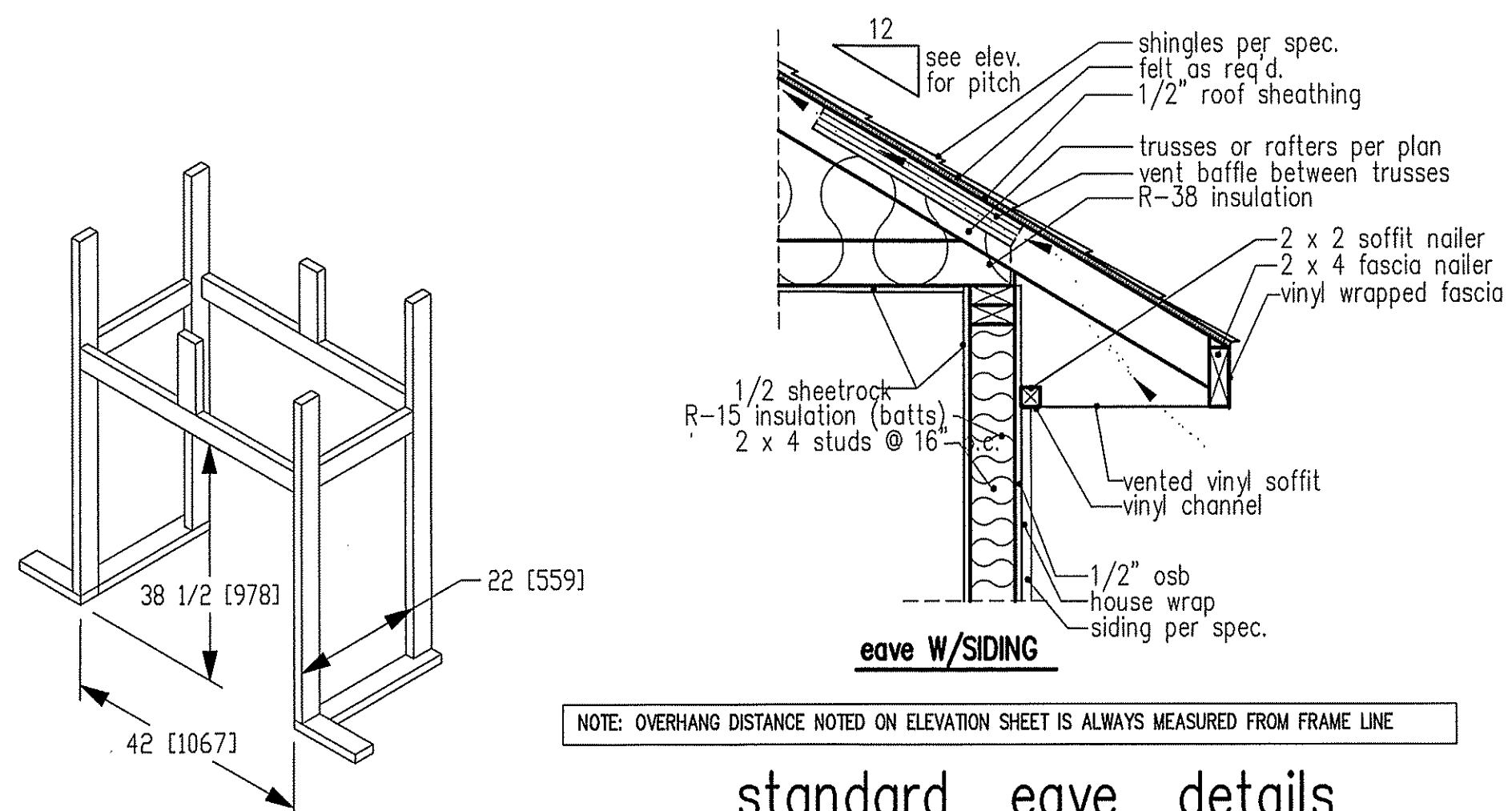
FREEDOM FAMILY HOMES
 P.O. BOX 608
 DUNN, N.C. - 28335
 O: (910) 892-1231 FAX: (910) 892-5680
 © 2019, FREEDOM FAMILY HOMES



FREEDOM FAMILY HOMES
JEFFERSON

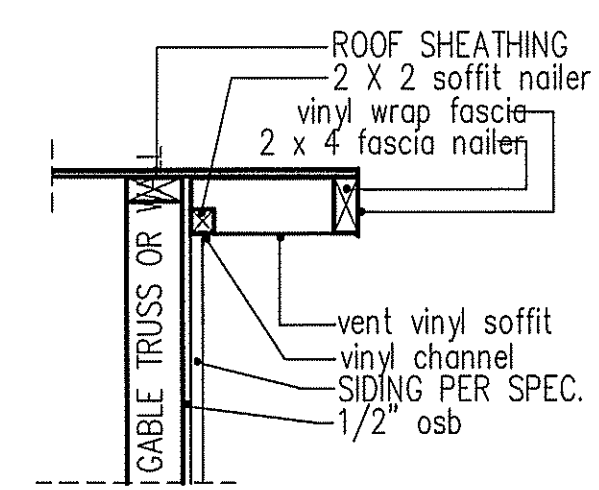
PLAN:

SHEET NO.
5



NOTE: OVERHANG DISTANCE NOTED ON ELEVATION SHEET IS ALWAYS MEASURED FROM FRAME LINE

standard eave details



NOTE: OVERHANG DISTANCE NOTED ON ELEVATION SHEET IS ALWAYS MEASURED FROM FRAME LINE

TABLE R602.7.5
MINIMUM NUMBER OF FULL HEIGHT STUDS AT EACH END OF HEADERS IN EXTERIOR WALLS

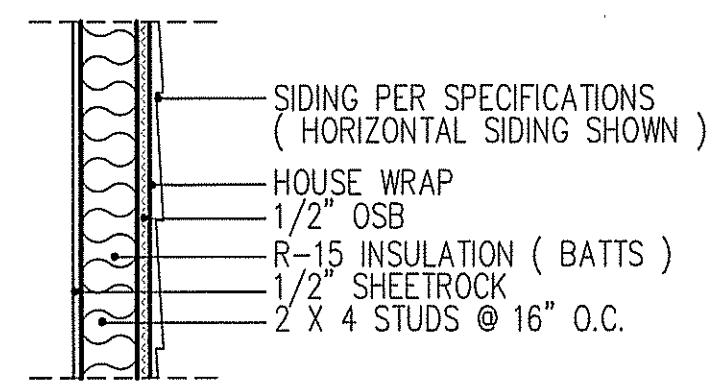
HEADER SPAN (feet)	MAX. STUD SPACING (Inches) [per Table R602.3(5)]	
	16	24
< 3'	1	1
4'	2	1
8'	3	2
12'	5	3
16'	6	4

GIRDER AND HEADER SIZES AND JACK STUD REQUIREMENTS ON EXTERIOR AND INTERIOR LOAD BEARING WALLS ARE TO COINCIDE WITH TABLE EXT.~R602.7 (1) AND INT.~R602.7 (2).

DIMENSIONS IN [] ARE MM

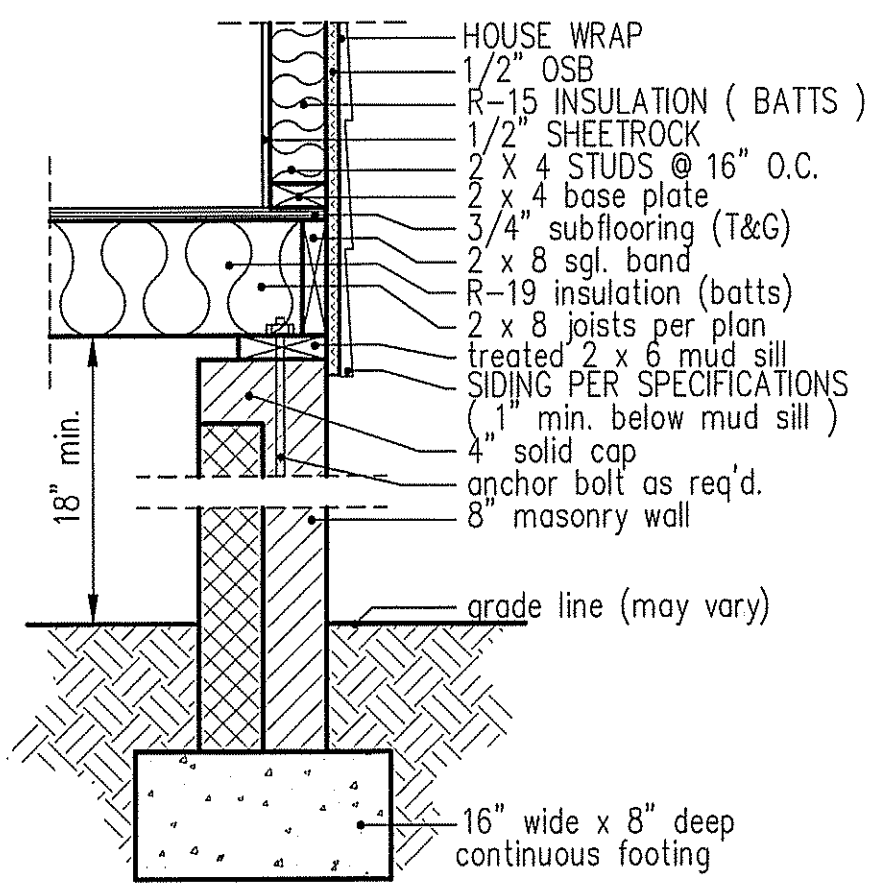
Model 6000-TR	Height		Front Width		Back Width		Depth		Glass Size	BTU Input
	Actual	Framing	Actual	Framing	Actual	Framing	Actual	Framing		
	Inches									
	38	38-1/2	41	42	28-1/2	42	21-1/2	22		

Reference dimensions only. We recommend measuring individual units at installation.

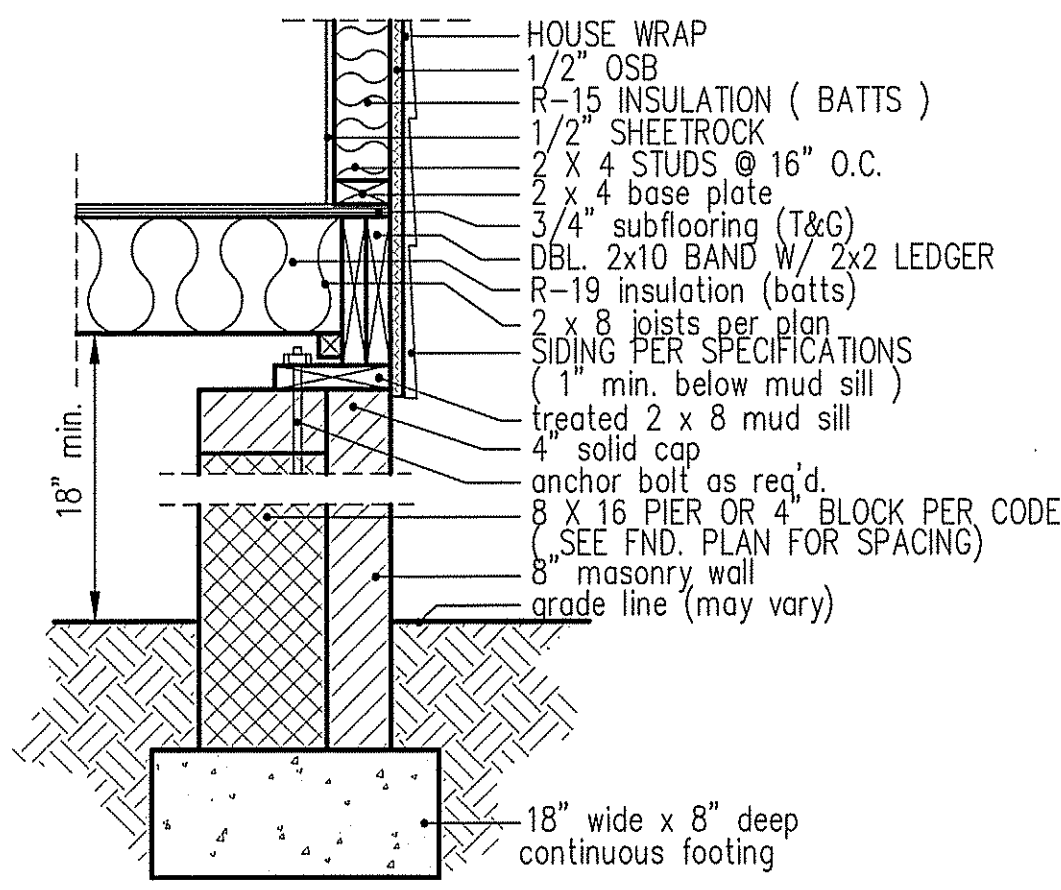


WALL W/siding

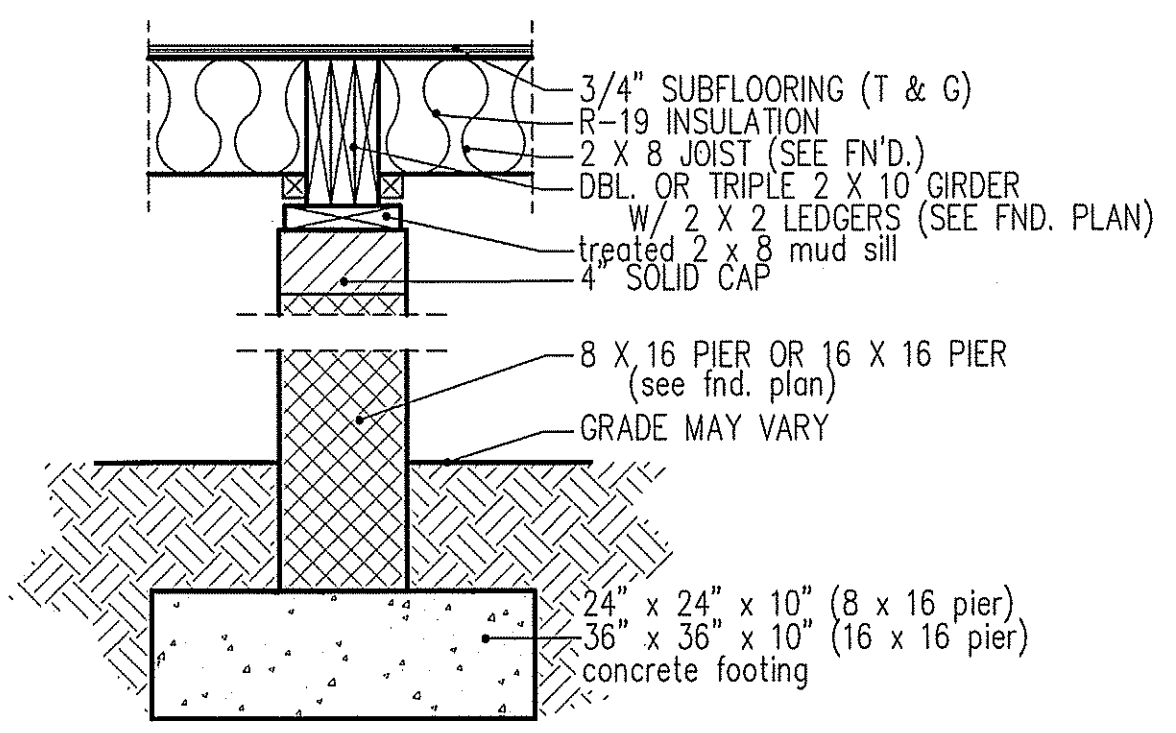
intermediate wall details



8" BOX SILL FOUNDATION WALL



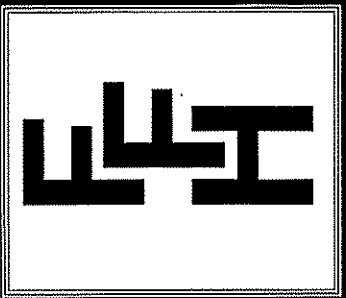
PIER and CURTAIN FOUNDATION WALL



PIER and GIRDER DETAIL

DATE:
MAY 13, 2019

FREEDOM FAMILY HOMES
P.O. BOX 608
DUNN, N.C. - 28335
O: (910) 892-1231 FAX: (910) 892-5680
©2019, FREEDOM FAMILY HOMES



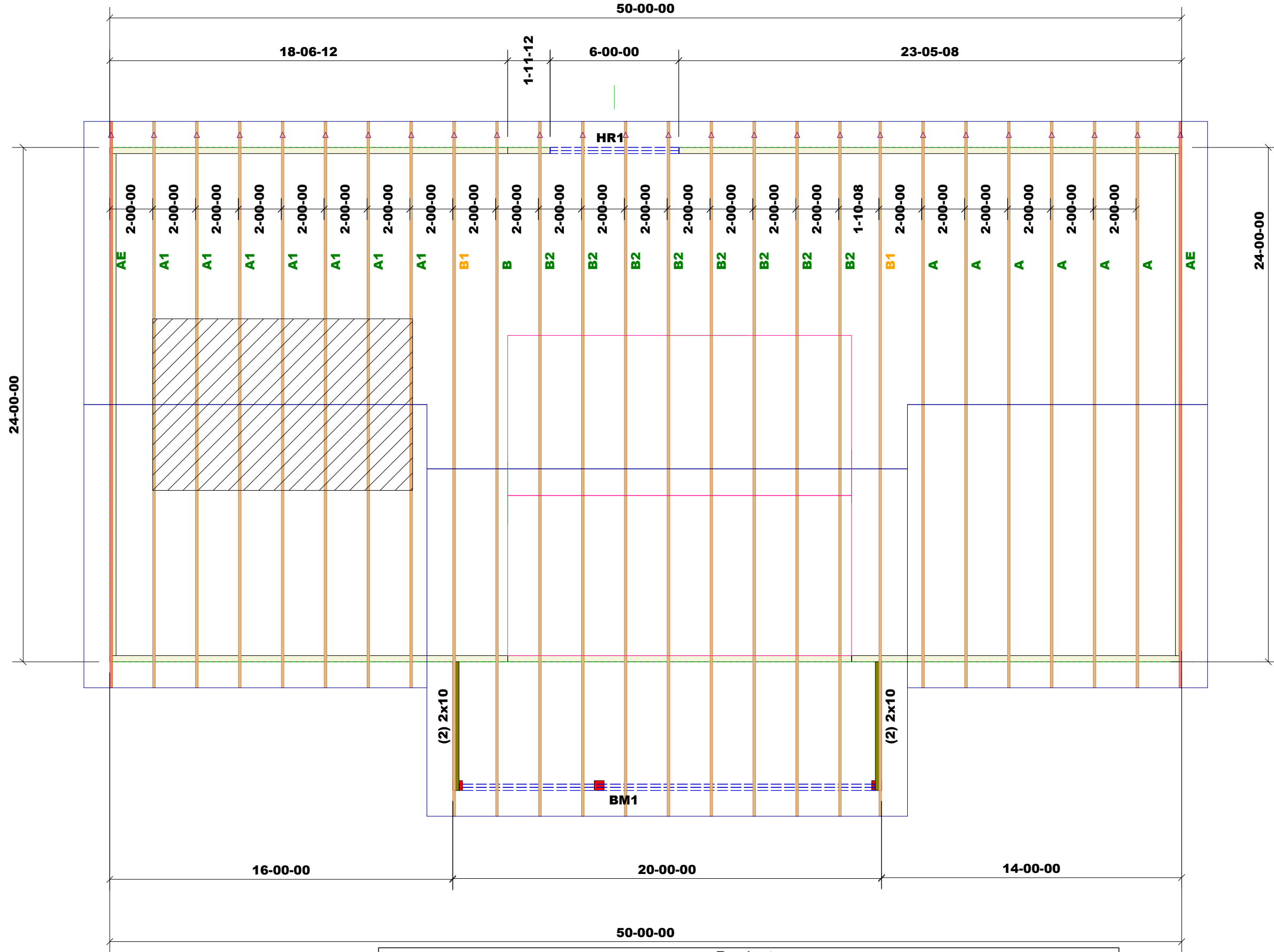
FREEDOM FAMILY HOMES
JEFFERSON

PLAN:
SHEET NO.
6

THIS LAYOUT IS INTENDED FOR THE PURPOSE OF TRUSS LOCATION AND PLACEMENT ONLY. REFER TO THE BUILDING PLANS FOR ACTUAL BUILDING CONSTRUCTION.



DEDICATED TO QUALITY AND EXCELLENCE
 200 EMMETT ROAD
 DUNN, NORTH CAROLINA 28334
 PHONE: 910-892-8400



PROJECT: JEFFERSON PLAN
 CUSTOMER: FREEDOM CONSTRUCTION
 MODEL: JEFFERSON PLAN
 QUOTE #: 2100003
 PRINT DATE: 1/4/2021
 DRAWN BY: Rodney Evans
 SCALE: N.T.S.

TOP LIVE LOAD: 20.0 lb/ft²
 TOP DEAD LOAD: 10.0 lb/ft²
 BOTTOM DEAD LOAD: 10.0 lb/ft²
 WIND SPEED: 130 mph

GENERAL NOTES:
 - DO NOT CUT OR MODIFY TRUSSES
 - TRUSSES ARE SPACED 24" ON CENTER UNLESS OTHERWISE NOTED
 - REFER TO THE INDIVIDUAL TRUSS DESIGN DRAWINGS FOR THE LOCATION OF LATERAL BRACING AND MULTI-PLY CONNECTION REQUIREMENTS.
 - PER ANSI TPI 1-2002 THE TRUSS ENGINEER IS RESPONSIBLE FOR TRUSS TO TRUSS CONNECTIONS AND TRUSS PLY TO PLY CONNECTIONS. THIS TRUSS PLAN RECOMMENDS TRUSS TO BEARING CONNECTIONS AND TRUSS TO BEAM CONNECTIONS WHICH SHALL BE REVIEWED BY THE BUILDING DESIGNER. IT IS THE RESPONSIBILITY OF THE BUILDING DESIGNER TO RESOLVE ALL ROOF FORCES ADEQUATELY TO THE FOUNDATION.

Products						
PlotID	Length	Product	Plies	Net Qty	Fab Type	
BM1	20-00-00	1-3/4" x 9-1/4" VERSA-LAM® 2.0 3100 SP	2	2	MFD	
HR1	8-00-00	1-3/4" x 9-1/4" VERSA-LAM® 2.0 3100 SP	2	2	MFD	

1st Level Roof Area: 0
 2nd Level Roof Area: 0