

TF 70

GENERAL NOTES

1. ALL WORK SHALL BE PERFORMED IN ACCORDANCE WITH ALL APPLICABLE NATIONAL, STATE, AND LOCAL CODES AND REGULATIONS.
2. CONTRACTOR SHALL THOROUGHLY REVIEW ALL SHEETS IN PLAN SET AND VERIFY ALL DETAILS AND DIMENSIONS BEFORE BEGINNING CONSTRUCTION. ANY DISCREPANCIES SHALL BE REPORTED TO RENAISSANCE RESIDENTIAL DESIGN, INC. FOR JUSTIFICATION AND/OR CORRECTION BEFORE PROCEEDING WITH WORK. CONTRACTORS SHALL ASSUME RESPONSIBILITY FOR ERRORS THAT ARE NOT REPORTED PRIOR TO CONSTRUCTION.
3. ALL DIMENSIONS SHOULD BE READ OR CALCULATED AND NEVER SCALED.
4. CONTRACTOR SHALL ENSURE COMPATIBILITY OF THE BUILDING WITH ALL SITE REQUIREMENTS.

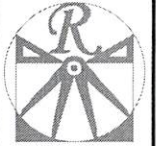
NOTICE TO CONTRACTOR
All construction must comply with current NC Building Codes and is subject to field inspections and verification.

APPROVED
Limited building only review.
Professional Engineer responsible for full compliance with the code.

01/11/2021




PLANS DESIGNED TO THE
**2018 NORTH CAROLINA STATE
RESIDENTIAL BUILDING CODE.**



RENAISSANCE
RESIDENTIAL DESIGN, INC.
RALEIGH, NC 27612
(919) 549-4128
WWW.RENAISSANCE.COM
The art of transforming your vision into reality.

RENAISSANCE RESIDENTIAL DESIGN, INC. HEREBY EXPRESSLY AGREES TO THE COMMON LAW COPYRIGHT AND OTHER RIGHTS OF RENAISSANCE RESIDENTIAL DESIGN, INC. IN THESE PLANS. THESE PLANS AND DIMENSIONS SHALL NOT BE REPRODUCED, CHANGED, OR COPIED IN ANY FORM OR MANNER, WITHOUT FIRST OBTAINING THE EXPRESS WRITTEN CONSENT OF RENAISSANCE RESIDENTIAL DESIGN, INC. NOR ARE THEY TO BE REPRODUCED OR TRANSMITTED IN ANY FORM OR BY ANY MEANS, WITHOUT FIRST OBTAINING THE EXPRESS WRITTEN PERMISSION AND CONSENT.

WEAVER
HOMES
3110 Woodcroft Drive, Fayetteville, NC 28403
910-437-2100
www.weaverhomes.com

PROFESSIONAL ARCHITECTURAL DRAWINGS. THESE PLANS AND DIMENSIONS SHALL NOT BE REPRODUCED, CHANGED, OR COPIED IN ANY FORM OR MANNER, WITHOUT FIRST OBTAINING THE EXPRESS WRITTEN CONSENT OF RENAISSANCE RESIDENTIAL DESIGN, INC. NOR ARE THEY TO BE REPRODUCED OR TRANSMITTED IN ANY FORM OR BY ANY MEANS, WITHOUT FIRST OBTAINING THE EXPRESS WRITTEN PERMISSION AND CONSENT.

WEAVER HOMES
CAROLINA COLLECTION
MAGNOLIA DRIVE LEFT

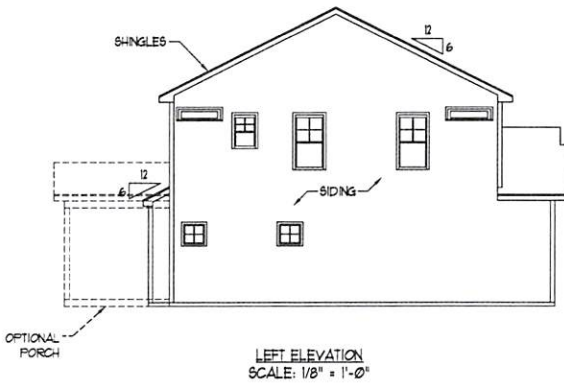
DATE:	JUNE 30, 2020
REV:	
SCALE:	AS NOTED
DRAWN BY:	WO
ENGINEERED BY:	
REVIEWED BY:	

B - ELEVATIONS

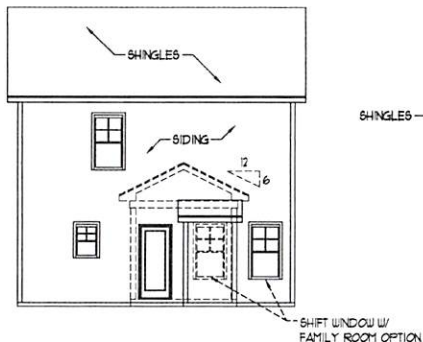
A-2



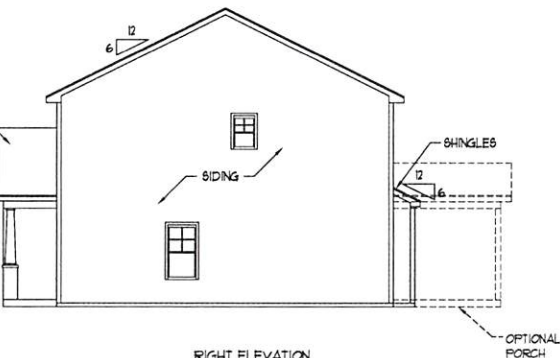
FRONT ELEVATION-B
SCALE: 1/4" = 1'-0"



LEFT ELEVATION
SCALE: 1/8" = 1'-0"

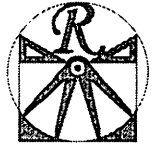


REAR ELEVATION
SCALE: 1/8" = 1'-0"



RIGHT ELEVATION
SCALE: 1/8" = 1'-0"

SCALE NOTE: 18x24 PRINTS ARE TO SCALE AS NOTED.
11x17 PRINTS ARE NOT TO SCALE



RENAISSANCE
RESIDENTIAL DESIGN, INC.
RALEIGH, NC 27612
(919) 648-4128
WWW.RENOCAROLINA.COM

The art of re-imagining your world into reality.
RENAISSANCE RESIDENTIAL DESIGN, INC. HAS THE RIGHT FORWARD THOUGHTS TO DESIGN AND CONSTRUCT THE BEST HOMES AND ARCHITECTURE THAT YOU CAN. THESE DRAWINGS ARE FOR THE PURPOSE OF CONVEYING AN ARCHITECTURAL CONCEPT ONLY.
RENAISSANCE RESIDENTIAL DESIGN, INC. HAS THE RIGHT FORWARD THOUGHTS TO DESIGN AND CONSTRUCT THE BEST HOMES AND ARCHITECTURE THAT YOU CAN. THESE DRAWINGS ARE FOR THE PURPOSE OF CONVEYING AN ARCHITECTURAL CONCEPT ONLY.
RENAISSANCE RESIDENTIAL DESIGN, INC. HAS THE RIGHT FORWARD THOUGHTS TO DESIGN AND CONSTRUCT THE BEST HOMES AND ARCHITECTURE THAT YOU CAN. THESE DRAWINGS ARE FOR THE PURPOSE OF CONVEYING AN ARCHITECTURAL CONCEPT ONLY.

WEAVER
HOMES
325 W. MARKET DRIVE - RALEIGH, NC 27601
www.weaverhomes.com

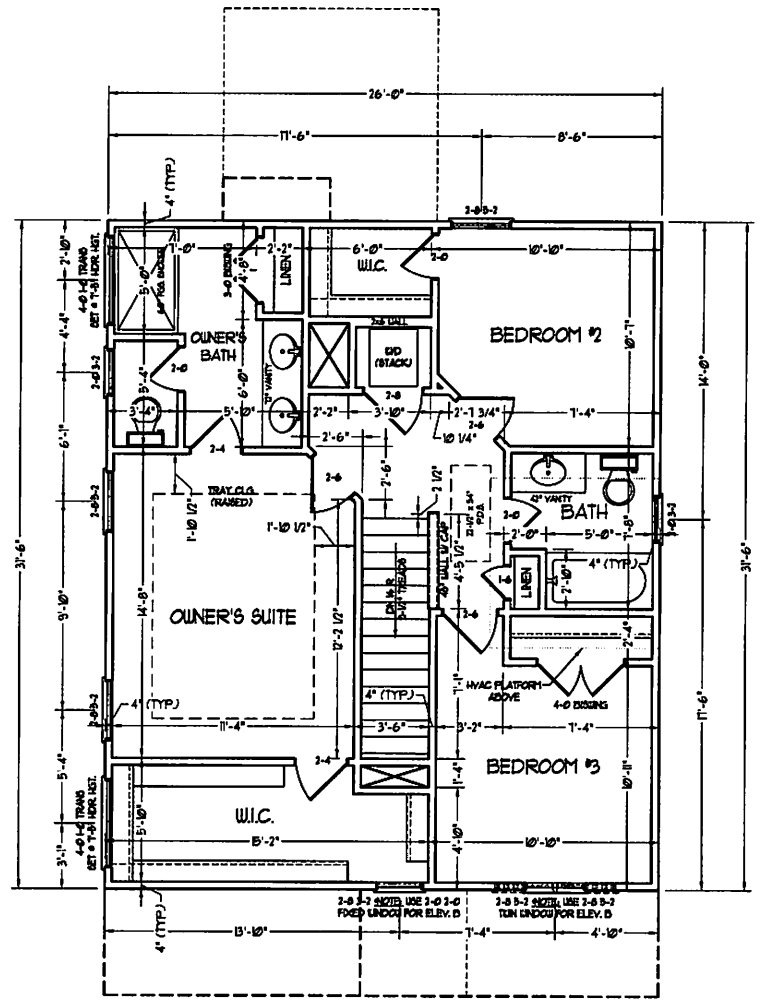
PLEASE CONSULT ARCHITECTURAL DRAWING OPTION SHEETS FOR FINISHES, MATERIALS, AND EQUIPMENT. ALL FINISHES, MATERIALS, AND EQUIPMENT SHALL BE AS SHOWN ON THESE DRAWINGS UNLESS OTHERWISE NOTED. ALL DIMENSIONS SHALL BE TAKEN TO THE CENTERLINE UNLESS OTHERWISE NOTED. ALL DIMENSIONS SHALL BE TAKEN TO THE CENTERLINE UNLESS OTHERWISE NOTED. ALL DIMENSIONS SHALL BE TAKEN TO THE CENTERLINE UNLESS OTHERWISE NOTED.

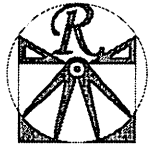
WEAVER HOMES
CAROLINA COLLECTION
MAGNOLIA DRIVE LEFT

DATE: JUNE 30, 2010
REV:
SCALE: 1/8" = 1'-0"
DRAWN BY: WJO
ENGINEERED BY:
REVIEWED BY:

SECOND FLOOR
PLAN
A-5

SCALE NOTE: 18x24 PRINTS ARE TO SCALE AS NOTED.
11x17 PRINTS ARE NOT TO SCALE





RENAISSANCE
RESIDENTIAL DESIGN, INC.

RALEIGH, NC 27612
(919) 843-4128
WWW.RENDESIGN.COM

The Art of Reimagining Your Home - One Plan at a Time

RENAISSANCE RESIDENTIAL DESIGN, INC. HEREBY EXPRESSLY AGREES TO COMPLY WITH ALL APPLICABLE LOCAL, STATE AND FEDERAL LAWS AND REGULATIONS. WE WILL NOT PROVIDE ANY SERVICE OR PRODUCT THAT VIOLATES ANY APPLICABLE LAWS OR REGULATIONS. WE WILL NOT PROVIDE ANY SERVICE OR PRODUCT THAT VIOLATES ANY APPLICABLE LAWS OR REGULATIONS. WE WILL NOT PROVIDE ANY SERVICE OR PRODUCT THAT VIOLATES ANY APPLICABLE LAWS OR REGULATIONS.

WEAVER
HOMES
3155 Westgate Parkway, Cary, NC 27513
919.487.2000
www.weaverhomes.com

PLEASE REVIEW THE ELECTRICAL PLAN CAREFULLY. THE CONTRACTOR SHALL BE RESPONSIBLE FOR VERIFYING ALL CONDITIONS AND CONDITIONS SHALL BE THE CONTRACTOR'S RESPONSIBILITY. THE CONTRACTOR SHALL BE RESPONSIBLE FOR VERIFYING ALL CONDITIONS AND CONDITIONS SHALL BE THE CONTRACTOR'S RESPONSIBILITY. THE CONTRACTOR SHALL BE RESPONSIBLE FOR VERIFYING ALL CONDITIONS AND CONDITIONS SHALL BE THE CONTRACTOR'S RESPONSIBILITY.

WEAVER HOMES
CAROLINA COLLECTION
MAGNOLIA DRIVE LEFT

DATE: JUNE 30, 2020
REV: _____
SCALE: 1/4" = 1'-0"
DRAWN BY: WJO
ENGINEERED BY: _____
REVIEWED BY: _____
FIRST FLOOR ELECTRICAL PLAN

E-1

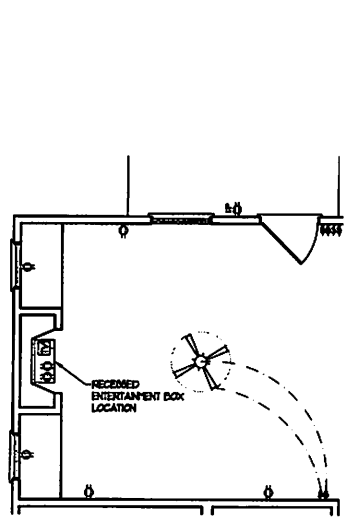
ELECTRICAL LAYOUT NOTES:

- 1) BLOCK AND WIRE FOR ALL CEILING FANS PER PLAN.
- 2) VANITY LIGHTS TO BE SET @ 30" AFF. (TYP)
- 3) ADDITIONAL EXTERIOR OUTLETS REQUIRED BY CODE TO BE LOCATED BY ELECTRICIAN.
- 4) PLACE SWITCHES BY (MNU) FROM RECESS OPENINGS.

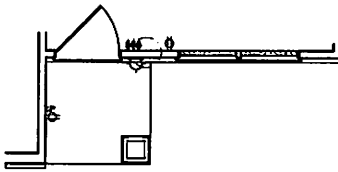
ELECTRICAL LEGEND

- ⊙ 120 V OUTLET
- ⊙ 120 V GF OUTLET
- ⊙ 120 V SWITCHED OUTLET
- ⊙ 120 V BASEBOARD OUTLET
- ⊙ 4-FLEX
- ⊙ COUNTER OR FLOOR MOUNTED
- ⊙ COUNTER OR FLOOR MOUNTED 120V GF
- ⊙ WEATHERPROOF
- ⊙ 220 V OUTLET
- ⊙ 220 V DEDICATED CIRCUIT
- ⊙ 220 V DEDICATED CIRCUIT
- ⊙ SPECIAL PURPOSE (240 V, ETC.)
- ⊙ WALL MOUNT LIGHT
- ⊙ CEILING MOUNT LIGHT
- ⊙ PENDANT LIGHT
- ⊙ RECESSED CAN LIGHT
- ⊙ PIN CAN LIGHT
- ⊙ EYE BALL LIGHT
- ⊙ FLUORESCENT LIGHT
- ⊙ UNDERCABINET LIGHT
- ⊙ FLOOD LIGHT
- ⊙ SWITCH
- ⊙ DIMMER SWITCH
- ⊙ TELEPHONE
- ⊙ DATA
- ⊙ TELEPHONE AND DATA
- ⊙ TV CONNECTION
- ⊙ TV/ DATA
- ⊙ CONDUIT FOR COMPONENT WIRING
- ⊙ SPEAKER
- ⊙ 120 V SMOKE/ CO DETECTOR
- ⊙ 120 V SMOKE DETECTOR
- ⊙ EXHAUST FAN
- ⊙ LOW VOLTAGE PANEL
- ⊙ ALARM PANEL
- ⊙ CEILING FAN
- ⊙ CEILING FAN BY LIGHT

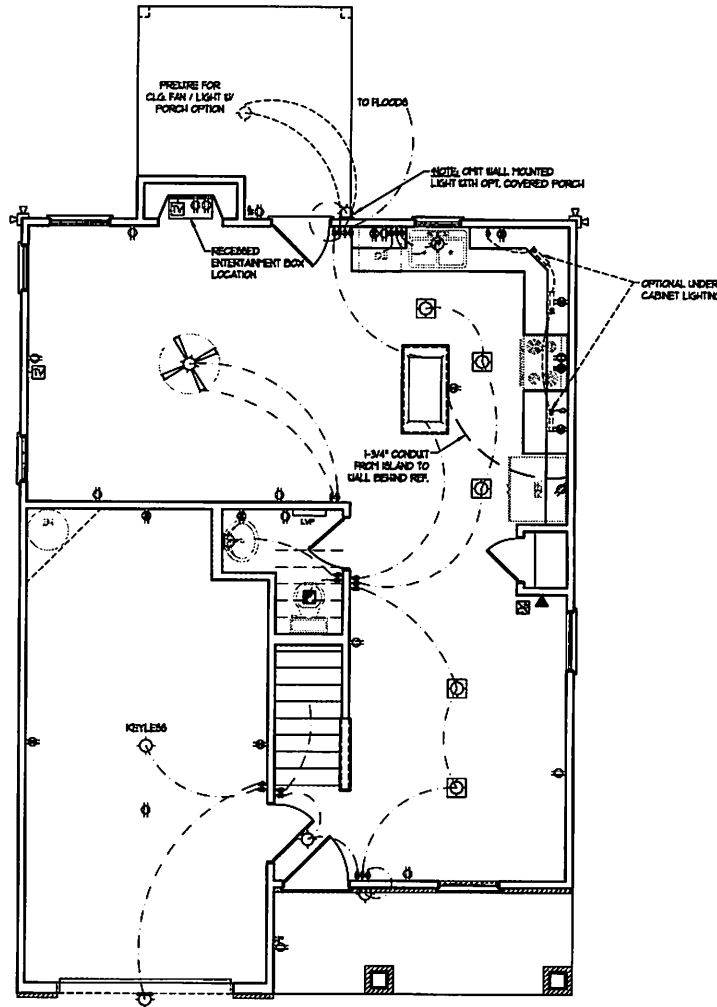
SCALE NOTE: 18x24 PRINTS ARE TO SCALE AS NOTED.
11x17 PRINTS ARE NOT TO SCALE



OPTIONAL FAMILY ROOM WITH ALTERNATE FIREPLACE LOCATION AND BUILT-INS



FRONT PORCH AND DINING ROOM WINDOW ELEVATION B





RENAISSANCE

RESIDENTIAL DESIGN, INC.

RALEIGH, NC 27612

(919) 849-4128

WWW.RENDESIGN.COM

The art of transforming your vision into reality.

RENAISSANCE RESIDENTIAL DESIGN, INC. HAS OVER THE PAST 10 YEARS MODIFIED OUR DESIGN PROCESS TO INCLUDE: CONSULTING, MATERIALS AND SPECIFICATIONS SERVICES FROM THE DESIGNER'S VIEW FOR THE PURPOSE OF CONVEYING AN ARCHITECTURAL CONCEPT ONLY.

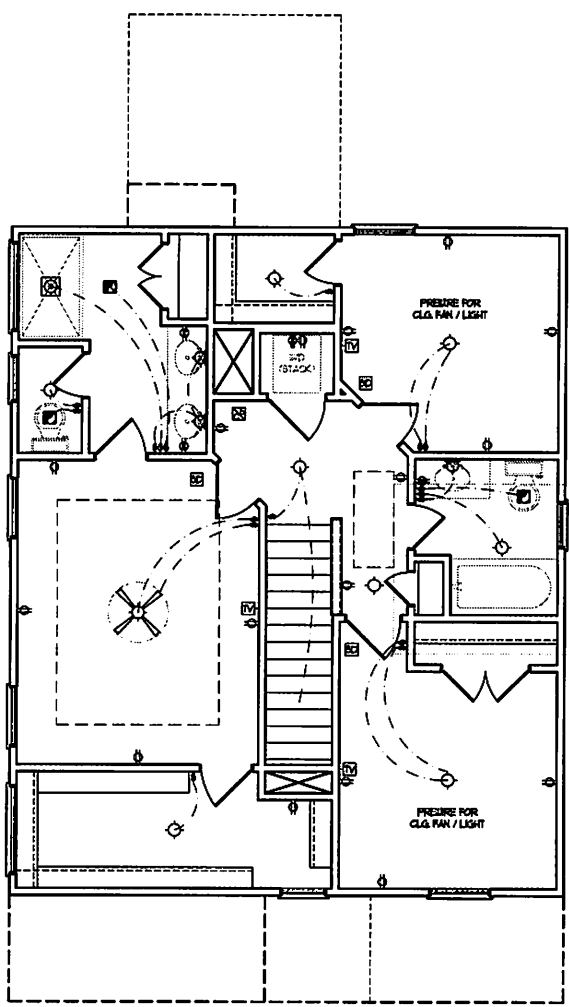
RENAISSANCE RESIDENTIAL DESIGN, INC. HAS OVER THE PAST 10 YEARS MODIFIED OUR DESIGN PROCESS TO INCLUDE: CONSULTING, MATERIALS AND SPECIFICATIONS SERVICES FROM THE DESIGNER'S VIEW FOR THE PURPOSE OF CONVEYING AN ARCHITECTURAL CONCEPT ONLY.

ELECTRICAL LAYOUT NOTES:

- 1) BLOCK AND GIVE FOR ALL CEILING FANS PER PLAN.
- 2) VANTY LIGHTS TO BE SET @ 90° OFF (TYP)
- 3) ADDITIONAL EXTERIOR OUTLETS REQUIRED BY CODE TO BE LOCATED BY ELECTRICIAN.
- 4) PLACE SWITCHES 8" FROM FINISH ROUGH OPENINGS.

ELECTRICAL LEGEND

- ⊕ 120 V OUTLET
- ⊕ 120 V GFI OUTLET
- ⊕ 120 V SWITCHED OUTLET
- ⊕ 120 V BAREBOARD OUTLET
- ⊕ 4-FLUX
- ⊕ COUNTER OR FLOOR MOUNTED
- ⊕ COUNTER OR FLOOR MOUNTED 120V GFI
- ⊕ LEATHER-PROOF
- ⊕ 220 V OUTLET
- ⊕ 220 V DEDICATED CIRCUIT
- ⊕ 220 V DEDICATED CIRCUIT
- ⊕ SPECIAL PURPOSE (240 V, ETC)
- ⊕ GALL MOUNT LIGHT
- ⊕ CEILING MOUNT LIGHT
- ⊕ PENDANT LIGHT
- ⊕ RECESSED CAN LIGHT
- ⊕ HIN CAN LIGHT
- ⊕ EYEBALL LIGHT
- ⊕ FLUORESCENT LIGHT
- ⊕ UNDERCABINET LIGHT
- ⊕ FLOOD LIGHT
- ⊕ SWITCH
- ⊕ DIMMER SWITCH
- ⊕ TELEPHONE
- ⊕ DATA
- ⊕ TELEPHONE AND DATA
- ⊕ TV CONNECTION
- ⊕ TV/ DATA
- ⊕ CONDUIT FOR COMPONENT BRING
- ⊕ SPEAKER
- ⊕ 120 V SMOKE/ CO DETECTOR
- ⊕ 120 V SMOKE DETECTOR
- ⊕ EXHAUST FAN
- ⊕ LOW VOLTAGE PANEL
- ⊕ ALARM PANEL
- ⊕ CEILING FAN
- ⊕ CEILING FAN w/ LIGHT



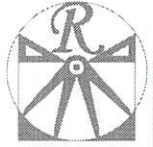
SCALE NOTE: 18x24 PRINTS ARE TO SCALE AS NOTED.
11x17 PRINTS ARE NOT TO SCALE

WEAVER
HOMES
CAROLINA COLLECTION
MAGNOLIA DRIVE LEFT

WEAVER HOMES RESIDENTIAL DESIGN, INC.
1100 W. HARRIS STREET, SUITE 100
RALEIGH, NC 27612
WWW.WEAVERTHOMES.COM

WEAVER HOMES
CAROLINA COLLECTION
MAGNOLIA DRIVE LEFT

DATE: JUNE 30, 2020
REV:
SCALE: 1/4" = 1'-0"
DRAWN BY: WJO
ENGINEERED BY:
REVIEWED BY:
SECOND FLOOR ELECTRICAL PLAN
E-2



RENAISSANCE
RESIDENTIAL DESIGN, INC.

RALEIGH, NC 27612
(919) 844-4128

WWW.RENDESIGN.COM

The art of transforming your vision into reality

RENAISSANCE RESIDENTIAL DESIGN, INC. HEREBY EXPRESSLY REPRESENTS IT IS PROVIDING CONTRACT DOCUMENTS TO YOU FOR YOUR PROJECT. THESE PLANS AND CONTRACT DOCUMENTS ARE NOT TO BE REPRODUCED, COPIED, OR COPIED FROM ANY FORM OF MEDIUM, WITHOUT FIRST OBTAINING THE EXPRESS WRITTEN CONSENT OF RENAISSANCE RESIDENTIAL DESIGN, INC. SHOULD THEY BE FOR ANY REASON, YOU ARE ADVISED THAT ANY REPRODUCTION OR TRANSMISSION OF THESE CONTRACT DOCUMENTS WITHOUT THE WRITTEN CONSENT OF RENAISSANCE RESIDENTIAL DESIGN, INC. IS STRICTLY PROHIBITED.

WEAVER
HOMES
— HOMES —
SUN WOODWAY DRIVE • FAYETTEVILLE, NC 28405
WWW.WEAVERHOMES.COM

PER A FLOOR PLAN, ELEVATION, SECTION, DETAIL OR ANY OTHER DRAWING OR DOCUMENT, THE CONTRACTOR SHALL BE RESPONSIBLE FOR VERIFYING ALL DIMENSIONS AND CONDITIONS OF THE SITE. THE CONTRACTOR SHALL BE RESPONSIBLE FOR VERIFYING ALL DIMENSIONS AND CONDITIONS OF THE SITE. THE CONTRACTOR SHALL BE RESPONSIBLE FOR VERIFYING ALL DIMENSIONS AND CONDITIONS OF THE SITE.

WEAVER HOMES
CAROLINA COLLECTION
MAGNOLIA DRIVE LEFT

DATE: JUNE 10, 2020

REV:

SCALE: 1/4" = 1'-0"

DRAWN BY: WO

ENGINEERED BY:

REVIEWED BY:

STEM WALL SLAB
FOUNDATION
PLAN

S-1

WALL HEIGHT (FEET)	MASONRY WALL TYPE			
	8" CMU	4" BRICK AND 4" CMU	4" BRICK AND 8" CMU	12" CMU
2' OR LESS	UNGROUTED	GROUT SOLID	UNGROUTED	UNGROUTED
3'	UNGROUTED	GROUT SOLID	UNGROUTED	UNGROUTED
4'	GROUT SOLID	GROUT SOLID w/ #4 REBAR @ 48" O.C.	GROUT SOLID	GROUT SOLID w/ #4 REBAR @ 64" O.C.
5'	GROUT SOLID w/ #4 REBAR @ 36" O.C.	N/A	GROUT SOLID w/ #4 REBAR @ 36" O.C.	GROUT SOLID w/ #4 REBAR @ 64" O.C.
6'	GROUT SOLID w/ #4 REBAR @ 24" O.C.	N/A	GROUT SOLID w/ #4 REBAR @ 24" O.C.	GROUT SOLID w/ #4 REBAR @ 64" O.C.
7' OR MORE	ENGINEERED BASED ON SITE CONDITIONS			

STRUCTURAL NOTES:

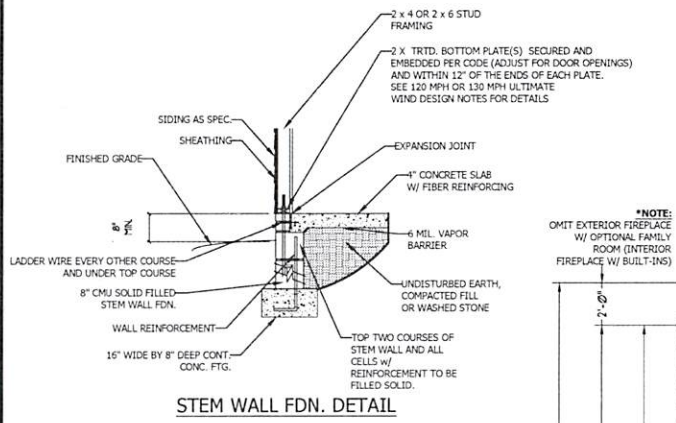
- TABLE ABOVE APPLIES TO HOUSE FOUNDATION ONLY. TABLE DOES NOT APPLY TO GARAGE FOUNDATION NOT COMMON TO HOUSE.
- TIE MULTIPLE WYTHES TOGETHER WITH LADDER WIRE @ 16" O.C. VERTICALLY.
- WALL HGT. IS MEASURED FROM TOP OF FOOTING TO TOP OF WALL.
- PREP SLAB PER RS06.2.1 AND RS05.2.2 BASE AND EXCEPTION OF THE 2018 NCR.
- MINIMUM 2" LAP SPlice LENGTH.
- BACKFILL OF WELL DRAINED SAND-GRAVEL MIXTURE SOILS (45 PSF/FT BELOW GRADE) CLASSIFIED AS GROUP 1 ACCORDING TO UNIFIED SOILS CLASSIFICATION SYSTEM IN ACCORDANCE WITH TABLE R405.1 OF THE 2018 NCR ARE ALLOWABLE.
- LOCATE REBAR IN CENTER OF FOUNDATION WALL.
- WHERE REQUIRED, FILL BLOCK SOLID WITH TYPE "S" MORTAR OR 3000 PSI GROUT. USE OF "LOW LIFT GROUTING" METHOD REQUIRED WHEN FILLING WALLS WITH GROUT AT HEIGHTS OF 5' AND GREATER.

ULTIMATE DESIGN WIND SPEED NOTES FOR LESS THAN 30' MEAN ROOF HEIGHT:

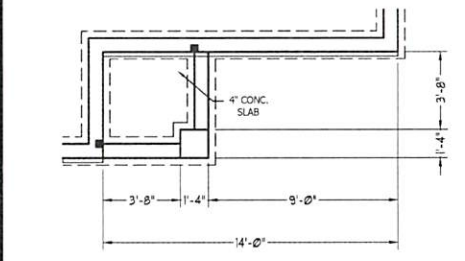
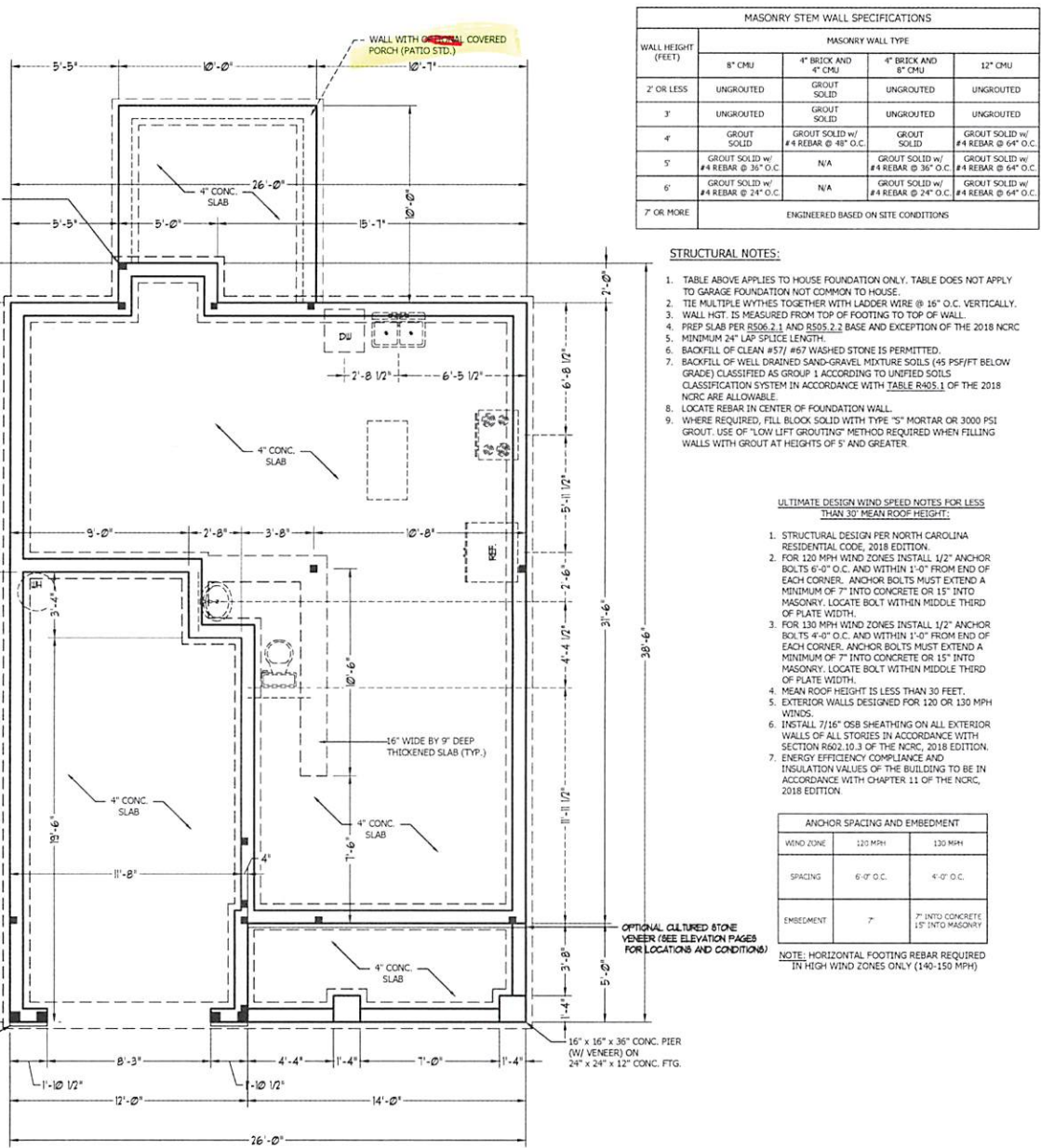
- STRUCTURAL DESIGN PER NORTH CAROLINA RESIDENTIAL CODE, 2018 EDITION.
- FOR 120 MPH WIND ZONES INSTALL 1/2" ANCHOR BOLTS 6'-0" O.C. AND WITHIN 1'-0" FROM END OF EACH CORNER. ANCHOR BOLTS MUST EXTEND A MINIMUM OF 7" INTO CONCRETE OR 15" INTO MASONRY. LOCATE BOLT WITHIN MIDDLE THIRD OF PLATE WIDTH.
- FOR 130 MPH WIND ZONES INSTALL 1/2" ANCHOR BOLTS 4'-0" O.C. AND WITHIN 1'-0" FROM END OF EACH CORNER. ANCHOR BOLTS MUST EXTEND A MINIMUM OF 7" INTO CONCRETE OR 15" INTO MASONRY. LOCATE BOLT WITHIN MIDDLE THIRD OF PLATE WIDTH.
- MEAN ROOF HEIGHT IS LESS THAN 30 FEET.
- EXTERIOR WALLS DESIGNED FOR 120 OR 130 MPH WINDS.
- INSTALL 7/16" OSB SHEATHING ON ALL EXTERIOR WALLS OF ALL STORIES IN ACCORDANCE WITH SECTION R602.10.3 OF THE NCR, 2018 EDITION.
- ENERGY EFFICIENCY COMPLIANCE AND INSULATION VALUES OF THE BUILDING TO BE IN ACCORDANCE WITH CHAPTER 11 OF THE NCR, 2018 EDITION.

ANCHOR SPACING AND EMBEDMENT		
WIND ZONE	120 MPH	130 MPH
SPACING	6'-0" O.C.	4'-0" O.C.
EMBEDMENT	7"	7" INTO CONCRETE 15" INTO MASONRY

NOTE: HORIZONTAL FOOTING REBAR REQUIRED IN HIGH WIND ZONES ONLY (140-150 MPH)

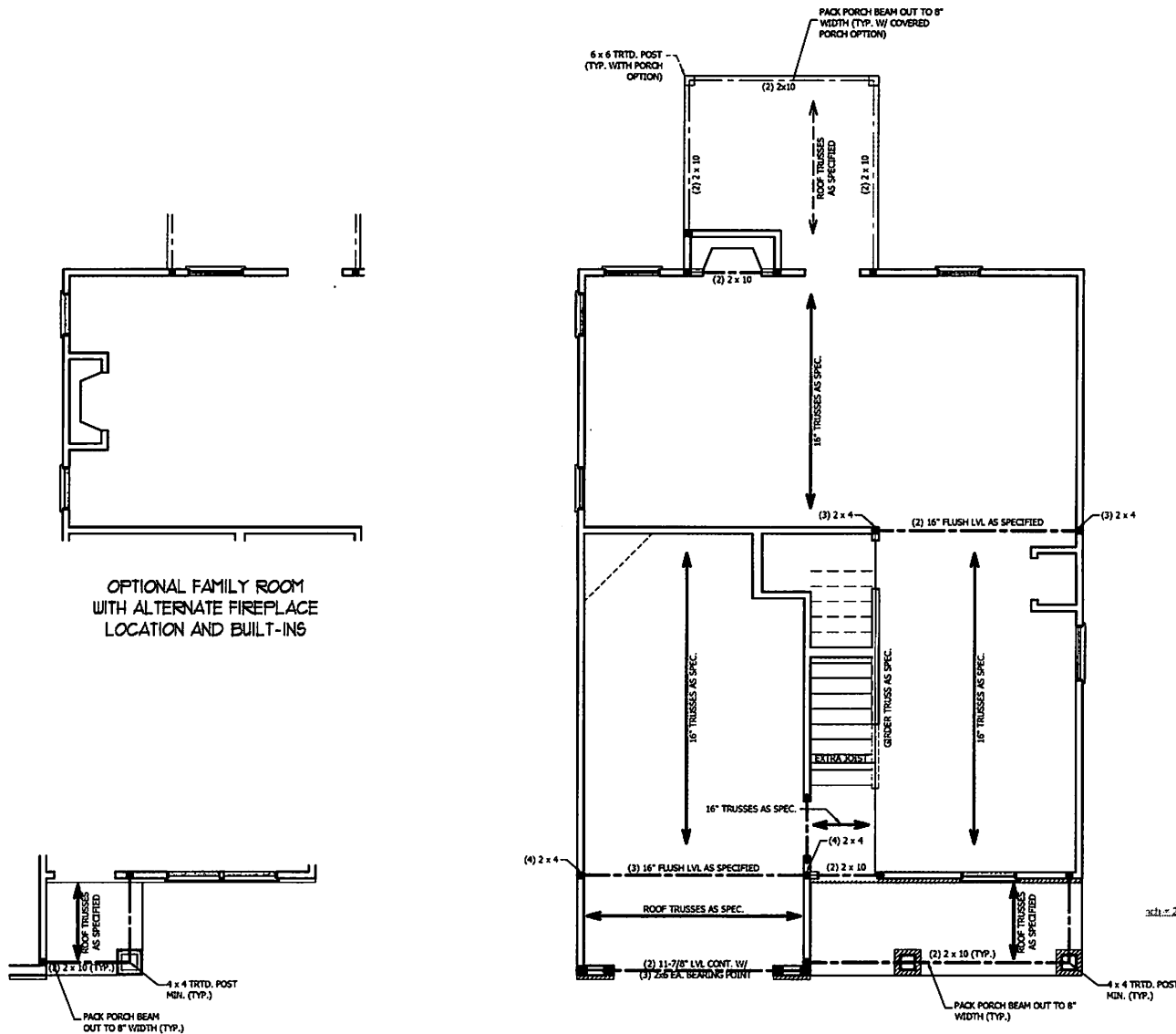


STEM WALL FDN. DETAIL



FRONT PORCH ELEVATION B

SCALE NOTE: 18x24 PRINTS ARE TO SCALE AS NOTED.
11x17 PRINTS ARE NOT TO SCALE



OPTIONAL FAMILY ROOM
WITH ALTERNATE FIREPLACE
LOCATION AND BUILT-INS

FRONT PORCH AND DINING
ROOM WINDOW ELEVATION B

STRUCTURAL NOTES:

1. ALL FRAMING LUMBER TO BE SPF #2 (UNO). ALL TREATED LUMBER TO BE SYP #2 (UNO).
2. ALL LOAD BEARING HEADERS TO BE (2) 2 x 6 (UNO).
3. INSTALL AN EXTRA JOIST UNDER WALLS PARALLEL TO FLOOR JOISTS.
4. WINDOW AND DOOR HEADERS TO BE SUPPORTED W/ (1) JACK STUD AND (1) KING STUD EA. END (UNO). SEE TABLE R602.7.5 FOR ADDITIONAL KING STUD REQUIREMENTS.
5. SQUARES DENOTE POINT LOADS WHICH REQUIRE SOLID BLOCKING TO GIRDER OR FOUNDATION. ALL SQUARES TO BE (2) STUDS (UNO.)
6. ALL 4 x 4 POSTS SHALL BE ANCHORED TO SLABS W/ SIMPSON ABUM POST BASES (OR EQUAL) AND 6 x 6 POSTS W/ ABUG6 POST BASES (OR EQUAL) (UNO). ALL 4 x 4 AND 6 x 6 POSTS TO BE INSTALLED WITH 700 LB CAPACITY UPLIFT CONNECTORS AT TOP (UNO.)
7. FOR FIBERGLASS, ALUMINUM, OR COLUMN ENDS, BY OTHERS, SECURE TO SLAB W/ (2) METAL ANGLES USING 2" CDWC. SCREWS. FASTEN ANGLES TO COLUMN W/ 1/4" THROUGH BOLTS W/ NUTS AND WASHERS. LOCATE ANGLES ON OPPOSITE SIDES OF COLUMN. THROUGH BOLTS MUST BE INSTALLED PRIOR TO SETTING COLUMN.

BRACE WALL PANEL NOTES:

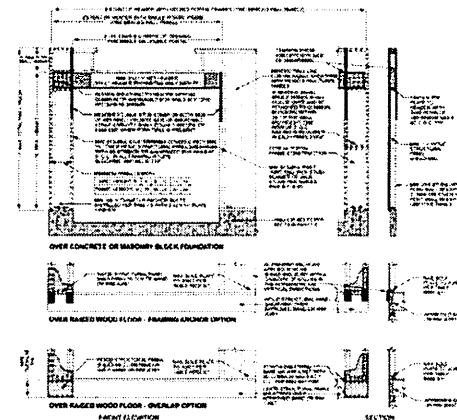
EXTERIOR WALLS: ALL EXTERIOR WALLS TO BE SHEATHED WITH CS-WSP OR CS-SFB IN ACCORDANCE WITH SECTION R602.10.3 UNLESS NOTED OTHERWISE.

REQUIRED LENGTH OF BRACING: REQUIRED BRACE WALL LENGTH FOR EACH SIDE OF THE CIRCUMSCRIBED RECTANGLE ARE INTERPOLATED PER TABLE R602.10.3. METHODS CS-WSP AND CS-SFB CONTRIBUTE THEIR ACTUAL LENGTH. METHOD GB CONTRIBUTES 0.5 ITS ACTUAL LENGTH. METHOD PF CONTRIBUTES 1.5 TIMES ITS ACTUAL LENGTH.

GYPSUM: ALL INTERIOR SIDES OF EXTERIOR WALLS AND BOTH SIDES OF INTERIOR WALLS TO HAVE 1/2" GYPSUM INSTALLED. WHEN NOT USING METHOD GB GYPSUM TO BE FASTENED PER TABLE R702.3.5. METHOD GB TO BE FASTENED PER TABLE R602.10.1.

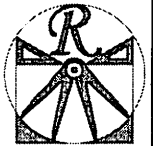
HDI: 800 LBS HOLD DOWN DEVICE FASTENED TO THE EDGE OF THE BRACE WALL PANEL NEAREST TO THE CORNER.

METHODS: PER TABLE R602.10.1



sch. = 25.4 mm, 1.00" = 305 mm, 1 lb. = 4.45 N.

FIGURE R602.10.1
METHOD PF - PORTAL FRAME CONSTRUCTION



RENAISSANCE
RESIDENTIAL DESIGN, INC.
RALEIGH, NC 27612
(919) 849-4129
WWW.RENAISSANCE.COM

RENAISSANCE RESIDENTIAL DESIGN, INC. IS AN EQUAL OPPORTUNITY EMPLOYER. WE ARE COMMITTED TO DIVERSITY AND INCLUSION. ALL EMPLOYEES AND CUSTOMERS ARE TREATED WITH RESPECT AND DIGNITY. WE ARE COMMITTED TO EXCELLENCE IN EVERYTHING WE DO.

RENAISSANCE RESIDENTIAL DESIGN, INC. IS AN EQUAL OPPORTUNITY EMPLOYER. WE ARE COMMITTED TO DIVERSITY AND INCLUSION. ALL EMPLOYEES AND CUSTOMERS ARE TREATED WITH RESPECT AND DIGNITY. WE ARE COMMITTED TO EXCELLENCE IN EVERYTHING WE DO.

WEAVER
HOMES
2154 W. WYOMING STREET • FAYETTEVILLE, NC 28404
919.487.1111

WEAVER HOMES RESIDENTIAL COLLECTIONS OFFER A VARIETY OF DESIGN OPTIONS TO MEET YOUR NEEDS. WE ARE COMMITTED TO EXCELLENCE IN EVERYTHING WE DO. WE ARE COMMITTED TO DIVERSITY AND INCLUSION. ALL EMPLOYEES AND CUSTOMERS ARE TREATED WITH RESPECT AND DIGNITY. WE ARE COMMITTED TO EXCELLENCE IN EVERYTHING WE DO.

WEAVER HOMES
CAROLINA COLLECTION
MAGNOLIA DRIVE LEFT

DATE: JUNE 14, 2020
REV:
SCALE: 1/4" = 1'-0"
DRAWN BY: WO
ENGINEERED BY:
REVIEWED BY:

SECOND FLOOR
FRAMING PLAN

SCALE NOTE: 18x24 PRINTS ARE
TO SCALE AS NOTED.
11x17 PRINTS ARE NOT TO SCALE

S-2

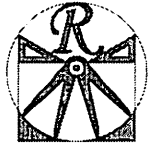
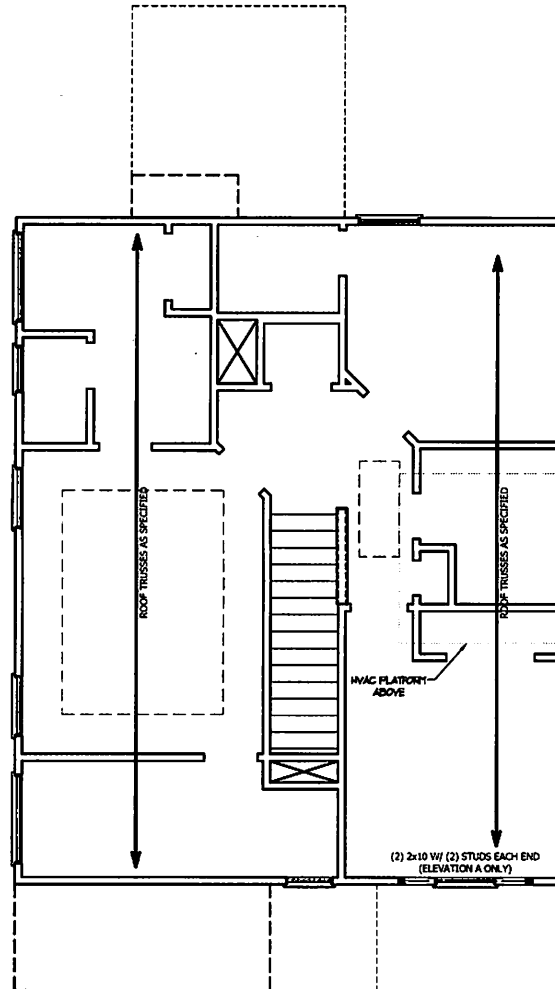
TABLE R602.7.5
MINIMUM NUMBER OF FULL HEIGHT STUDS
AT EACH END OF HEADERS IN EXTERIOR WALLS

HEADER SPAN (FEET)	MAXIMUM STUD SPACING (INCHES) (PER TABLE R602.3(5))	
	16	24
UP TO 3'	1	1
4'	2	1
8'	3	2
12'	5	3
16'	6	4

STRUCTURAL NOTES:

1. ALL FRAMING LUMBER TO BE SPF #2 (UNO). ALL TREATED LUMBER TO BE SYP #2 (UNO.)
2. ALL LOAD BEARING HEADERS TO BE (2) 2 x 6 (UNO).
3. WINDOW AND DOOR HEADERS TO BE SUPPORTED w/ (1) JACK STUD AND (1) KING STUD EA. END (UNO.). SEE TABLE R602.7.5 FOR ADDITIONAL KING STUD REQUIREMENTS.
4. SQUARES DENOTE POINT LOADS WHICH REQUIRE SOLID BLOCKING TO GIRDER OR FOUNDATION. ALL SQUARES TO BE (2) STUDS (UNO.)

DSP - DOUBLE STUD POCKET
TSP - TRIPLE STUD POCKET



RENAISSANCE
RESIDENTIAL DESIGN, INC.

RALEIGH, NC 27612
(919) 849-4128
WWW.RENOCAROLINA.COM

The art of transforming your vision into reality.

RENAISSANCE RESIDENTIAL DESIGN, INC. PROVIDES THE RIGHT TO MAKE MODIFICATIONS TO THE EXISTING AND CONSTRUCTION, ALL RIGHTS RESERVED. SPECIFICATIONS AND CONTRACT DOCUMENTS ARE FOR INFORMATION ONLY. THE NUMBER OF COPIES FROM AN ARCHITECTURAL CONCEPT ONLY.

RENAISSANCE RESIDENTIAL DESIGN, INC. HEREBY DISCLAIMS ANY AND ALL WARRANTIES, INCLUDING BUT NOT LIMITED TO, THE IMPLIED WARRANTIES OF MERCHANTABILITY AND FITNESS FOR A PARTICULAR PURPOSE. THE USER SHALL BE RESPONSIBLE FOR OBTAINING THE NECESSARY PERMITS AND APPROVALS FROM THE LOCAL, STATE AND FEDERAL AUTHORITIES. THE USER SHALL BE RESPONSIBLE FOR OBTAINING THE NECESSARY PERMITS AND APPROVALS FROM THE LOCAL, STATE AND FEDERAL AUTHORITIES. THE USER SHALL BE RESPONSIBLE FOR OBTAINING THE NECESSARY PERMITS AND APPROVALS FROM THE LOCAL, STATE AND FEDERAL AUTHORITIES.

WEAVER
HOMES
SINCE 1977, WE'VE BUILT A REPUTATION FOR EXCELLENCE IN CUSTOM HOME BUILDING.
WWW.WEAVERHOMES.COM

WEAVER HOMES IS AN EQUAL OPPORTUNITY AFFIRMATIVE ACTION EMPLOYER. WE DO NOT DISCRIMINATE ON THE BASIS OF RACE, GENDER, RELIGION, NATIONAL ORIGIN, ANCESTRY, COLOR, SEX, OR AGE. WE DO NOT DISCRIMINATE AGAINST ANY INDIVIDUALS WITH DISABILITIES. WE DO NOT DISCRIMINATE AGAINST ANY INDIVIDUALS WHO ARE VETERANS OR FORMERLY EMPLOYED BY THE U.S. ARMY, U.S. NAVY, U.S. AIR FORCE, U.S. MARINE CORPS, U.S. COAST GUARD, U.S. AIR NATIONAL GUARD, U.S. AIR FORCE RESERVE, U.S. NAVY RESERVE, U.S. MARINE CORPS RESERVE, U.S. COAST GUARD RESERVE, U.S. AIR NATIONAL GUARD RESERVE, U.S. AIR FORCE RESERVE, U.S. NAVY RESERVE, U.S. MARINE CORPS RESERVE, U.S. COAST GUARD RESERVE.

WEAVER HOMES
CAROLINA COLLECTION
MAGNOLIA DRIVE LEFT

DATE: JUNE 14, 2020
REV: _____
SCALE: 1/4" = 1'-0"
DRAWN BY: WJO
ENGINEERED BY: _____
REVIEWED BY: _____

ATTIC FLOOR
FRAMING PLAN

S-3

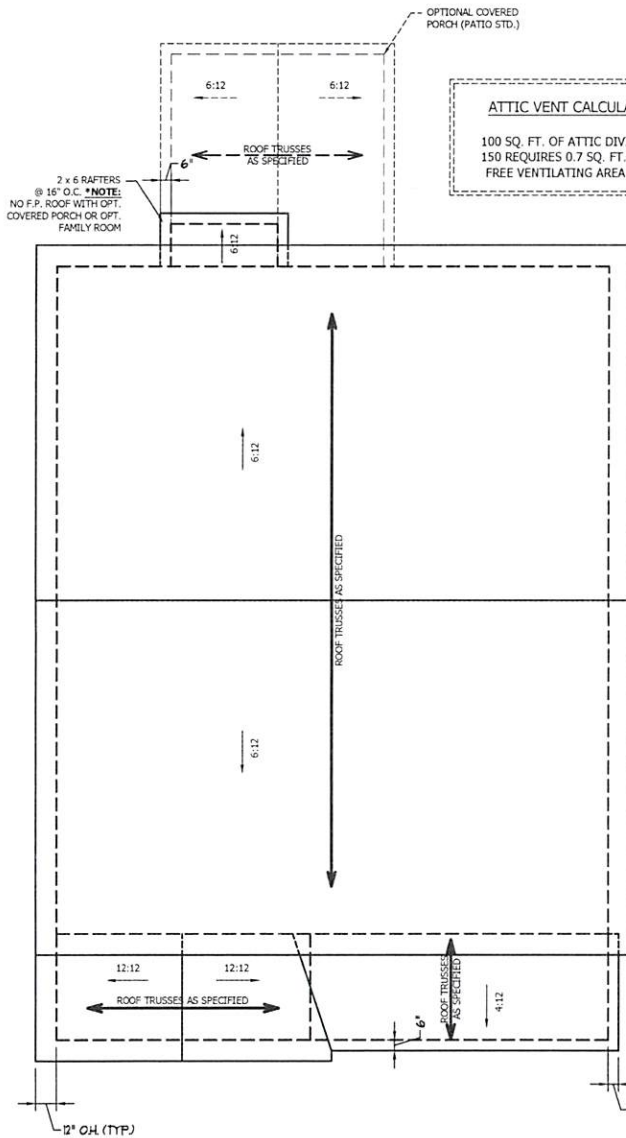
SCALE NOTE: 18x24 PRINTS ARE TO SCALE AS NOTED.
11x17 PRINTS ARE NOT TO SCALE

ATTIC VENT CALCULATION:

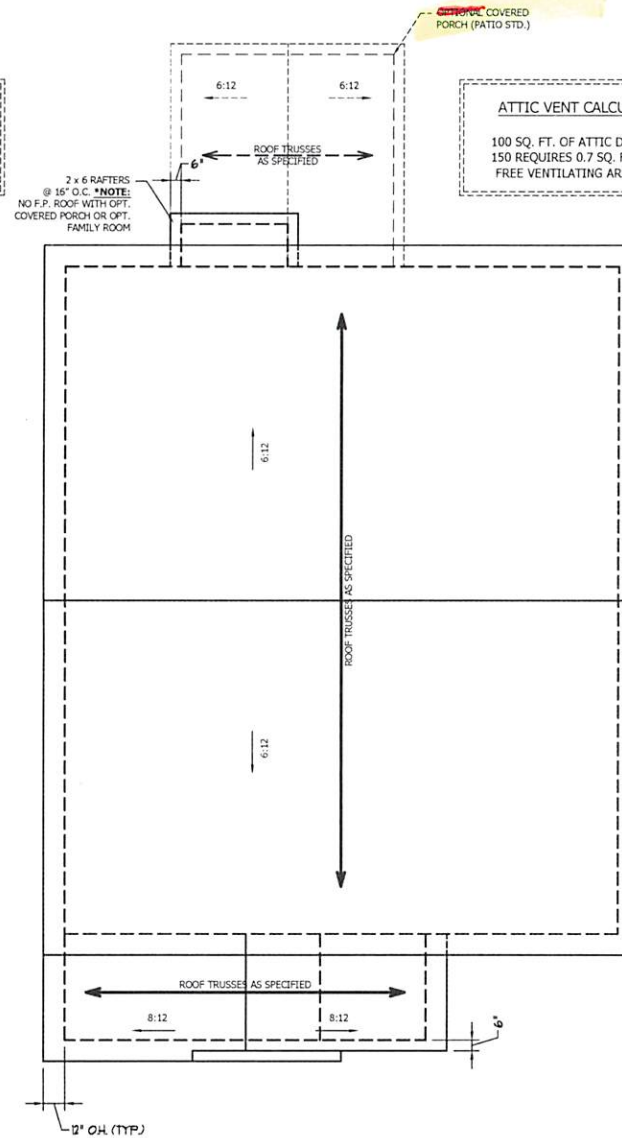
1077 SQ. FT. OF ATTIC DIVIDED BY 150 REQUIRES 7.2 SQ. FT. OF NET FREE VENTILATING AREA (MIN.).

STRUCTURAL NOTES:

1. ALL FRAMING LUMBER TO BE #2 SPF (UNC).
2. HIP SPLICES ARE TO BE SPACED A MIN. OF 8'-0". FASTEN MEMBERS WITH THREE ROWS OF 12d NAILS @ 16" O.C. (TYP.)
3. STICK FRAME OVER-FRAMED ROOF SECTIONS W/ 2 x 8 RIDGES, 2 x 6 RAFTERS @ 16" O.C. AND FLAT 2 x 10 VALLEYS OR USE VALLEY TRUSSES.
4. FASTEN FLAT VALLEYS TO RAFTERS OR TRUSSES WITH SIMPSON H2.5A HURRICANE TIES @ 32" O.C. MAX. PASS HURRICANE TIES THROUGH NOTCH IN ROOF SHEATHING. EACH RAFTER IS TO BE FASTENED TO THE FLAT VALLEY WITH A MIN. OF (6) 12d TOE NAILS.
5. REFER TO SECTION R802.11 OF THE 2018 NRCR FOR REQUIRED UPLIFT RESISTANCE AT RAFTERS AND TRUSSES.

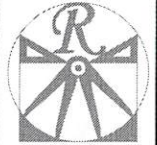


ELEVATION A



ELEVATION B

SCALE NOTE: 18x24 PRINTS ARE TO SCALE AS NOTED.
11x17 PRINTS ARE NOT TO SCALE



RENAISSANCE
RESIDENTIAL DESIGN, INC.

RALEIGH, NC 27612
(919) 649-4128
WWW.RENAISSANCEDSIGN.COM

THE ART OF TRANSFORMING YOUR VISION INTO REALITY
RENAISSANCE RESIDENTIAL DESIGN, INC. PROVIDES ARCHITECTURAL SERVICES FOR RESIDENTIAL PROJECTS. WE ARE A FULL SERVICE ARCHITECTURAL FIRM. OUR SERVICES INCLUDE: CONCEPT DESIGN, PERMITTING, AND CONSTRUCTION ADMINISTRATION. WE ARE A FULL SERVICE ARCHITECTURAL FIRM. OUR SERVICES INCLUDE: CONCEPT DESIGN, PERMITTING, AND CONSTRUCTION ADMINISTRATION.

WEAVER
HOMES
3130 WOODLAND DRIVE, SUITE 100
WAKE FOREST, NC 27158
WWW.WEAVERHOMES.COM

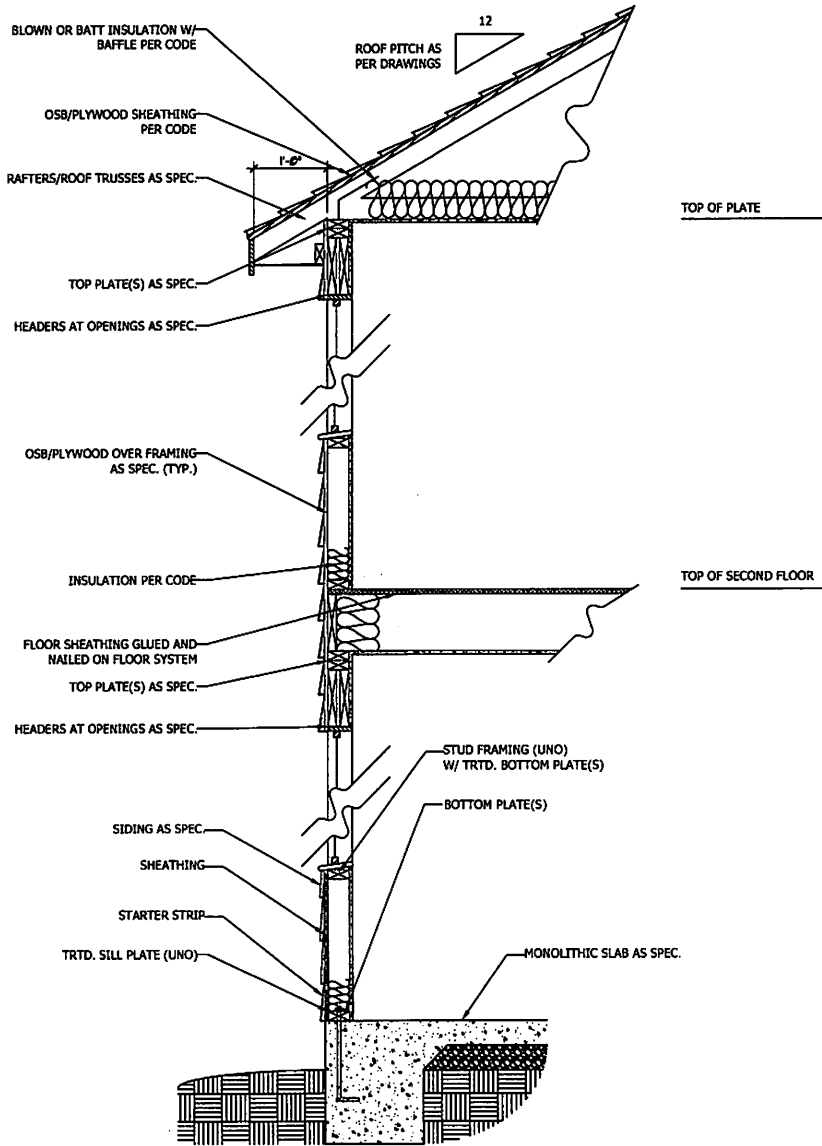
PLEASE CONSULT THE ARCHITECT'S SPECIFICATIONS FOR ALL MATERIALS, FINISHES, AND METHODS OF INSTALLATION. THE ARCHITECT'S SPECIFICATIONS SHALL BE THE BASIS FOR ALL CONSTRUCTION. THE ARCHITECT'S SPECIFICATIONS SHALL BE THE BASIS FOR ALL CONSTRUCTION.

WEAVER HOMES
CAROLINA COLLECTION
MAGNOLIA DRIVE LEFT

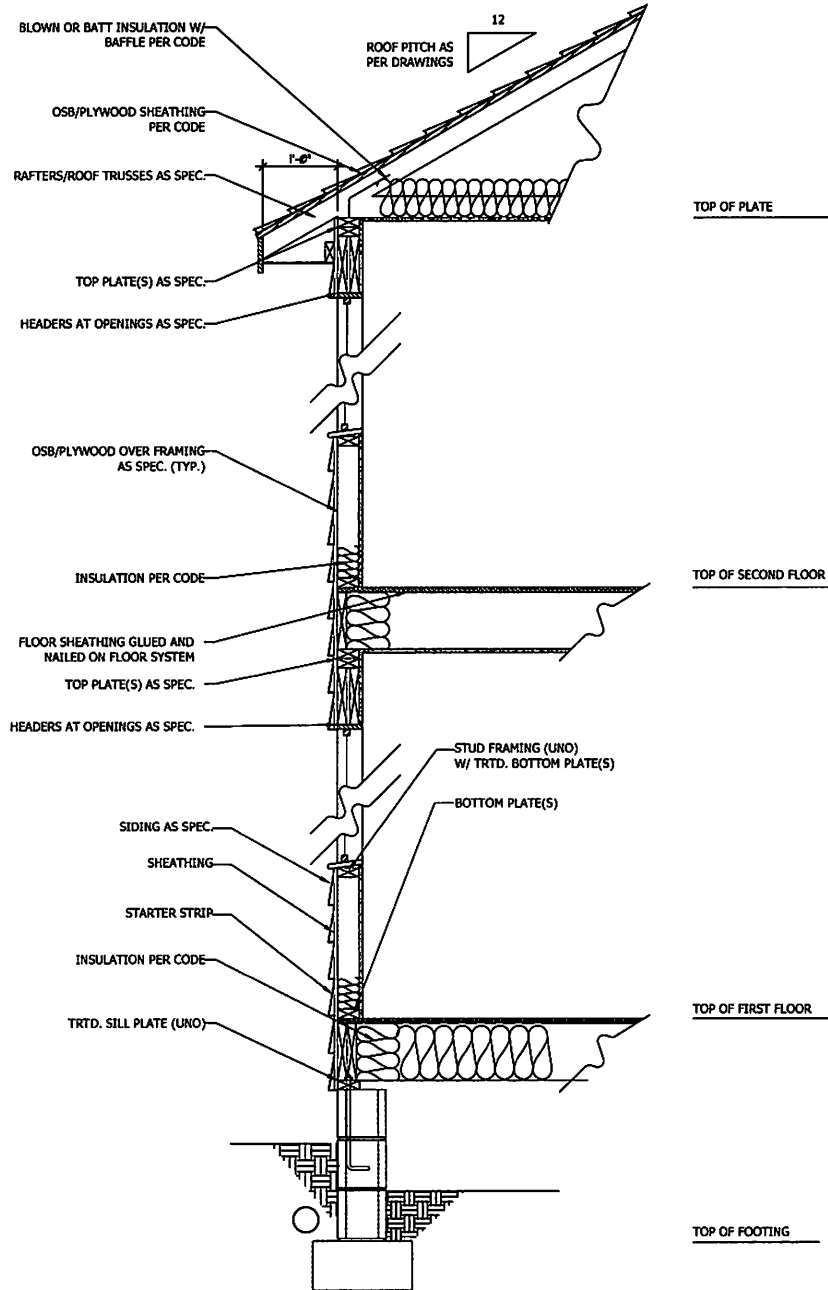
DATE: JUNE 30, 2020
REV: _____
SCALE: 1/4" = 1'-0"
DRAWN BY: WJO
ENGINEERED BY: _____
REVIEWED BY: _____

ROOF PLAN
ELEVATIONS
A & B

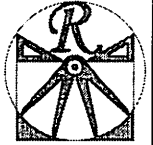
S-3



WALL SECTION W/ SLAB
W/ STD. SIDING SHOWN (NTS)



WALL SECTION W/ CRAWL SPACE
W/ STD. SIDING SHOWN (NTS)



RENAISSANCE
RESIDENTIAL DESIGN, INC.
RALEIGH, NC 27612
(919) 849-4128
WWW.RENDESIGN.COM
The art of transforming your vision into reality.

RENAISSANCE RESIDENTIAL DESIGN, INC. RESERVES THE RIGHT TO MAKE MODIFICATIONS TO THESE PLANS, SPECIFICATIONS AND CONDITIONS WITHOUT NOTICE. THESE CHANGES ARE FOR THE PURPOSE OF CORRECTING AN ARCHITECTURAL ERROR OR OMISSION.

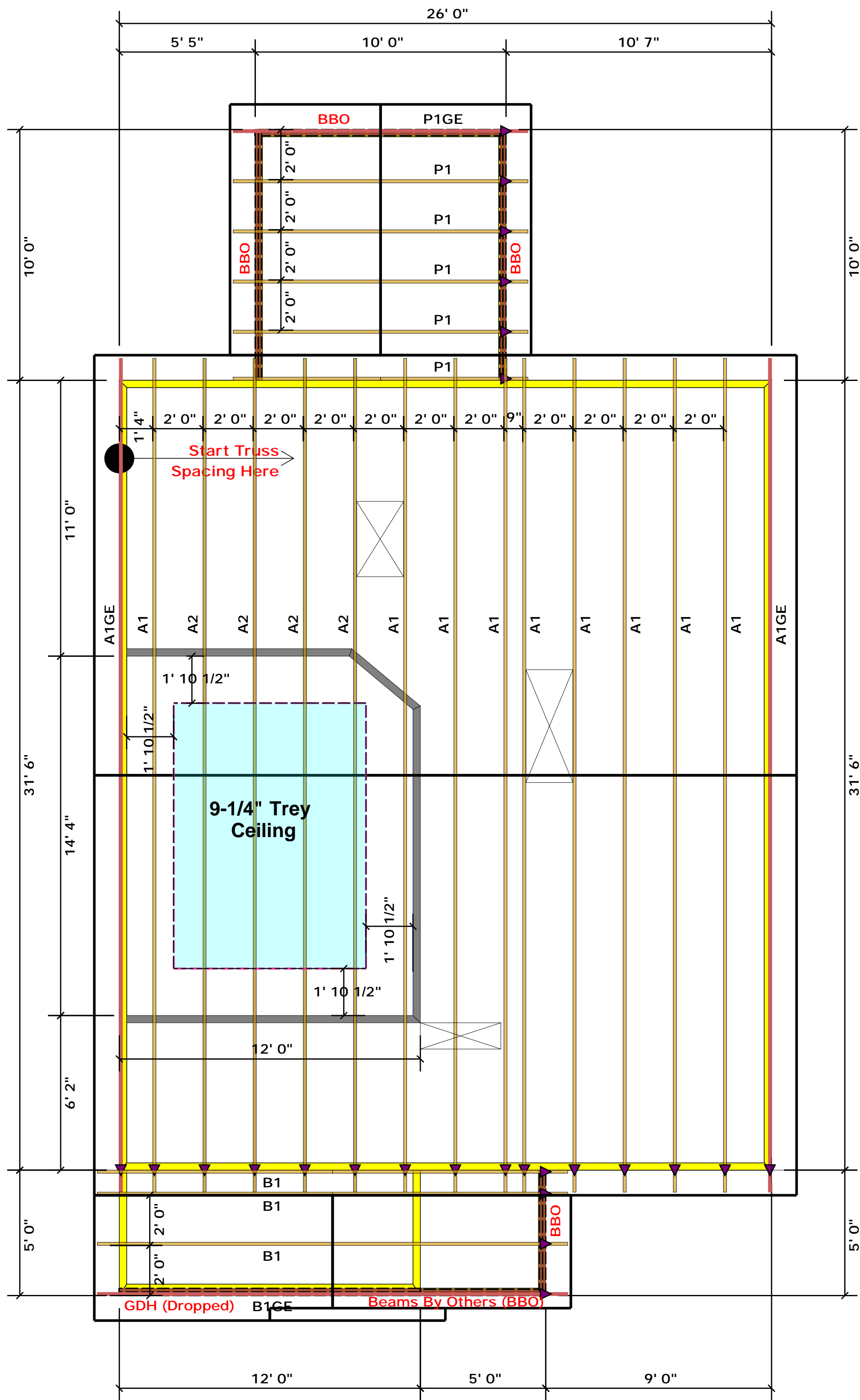
RENAISSANCE RESIDENTIAL DESIGN, INC. RESERVES THE RIGHT TO MAKE MODIFICATIONS TO THESE PLANS, SPECIFICATIONS AND CONDITIONS WITHOUT NOTICE. THESE CHANGES ARE FOR THE PURPOSE OF CORRECTING AN ARCHITECTURAL ERROR OR OMISSION.

WEAVER
HOMES
3500 WOODHURST DRIVE • DEXTER, NC 27825
www.weaverhomes.com

THIS PLAN, SPECIFICATIONS, AND CONDITIONS ARE THE PROPERTY OF RENDESIGN, INC. AND ARE TO BE USED ONLY FOR THE PROJECT AND SITE SPECIFICALLY IDENTIFIED HEREIN. ANY REUSE OR MODIFICATION OF THESE PLANS WITHOUT THE WRITTEN CONSENT OF RENDESIGN, INC. IS STRICTLY PROHIBITED. ANY PARTY WHOSE FIRST OMISSION HAS WRITTEN AND CONSENTED TO THESE PLANS AND CONDITIONS.

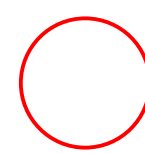
WEAVER HOMES
CAROLINA COLLECTION
MAGNOLIA DRIVE LEFT

DATE: JUNE 30, 2020
REV:
SCALE: 1/4" = 1'-0"
DRAWN BY: WJO
ENGINEERED BY:
REVIEWED BY:



▲ = Denotes Left End of Truss
(Reference Engineered Truss Drawing)

Truss Placement Plan SCALE: NTS



All Truss Reactions are Less than 3,000 lbs. Unless Noted Otherwise.
 -- Denotes Reaction Greater than 3,000 lbs.
 Reaction / # of Studs

LOAD CHART FOR JACK STUDS

MEMBER SIZE	SPACING	LOAD (LBS)
1700	1	2550
1700	2	5100
5100	3	7650
6800	4	10200
8500	5	12750
10200	6	15300
11900	7	
13600	8	
15300	9	

BUILDER	Weaver Development
JOB NAME	Lot 70 Thomas Farm
PLAN	Magnolia Elev. B
SEAL DATE	Seal Date
QUOTE #	Quote #
JOB #	J1220-5726

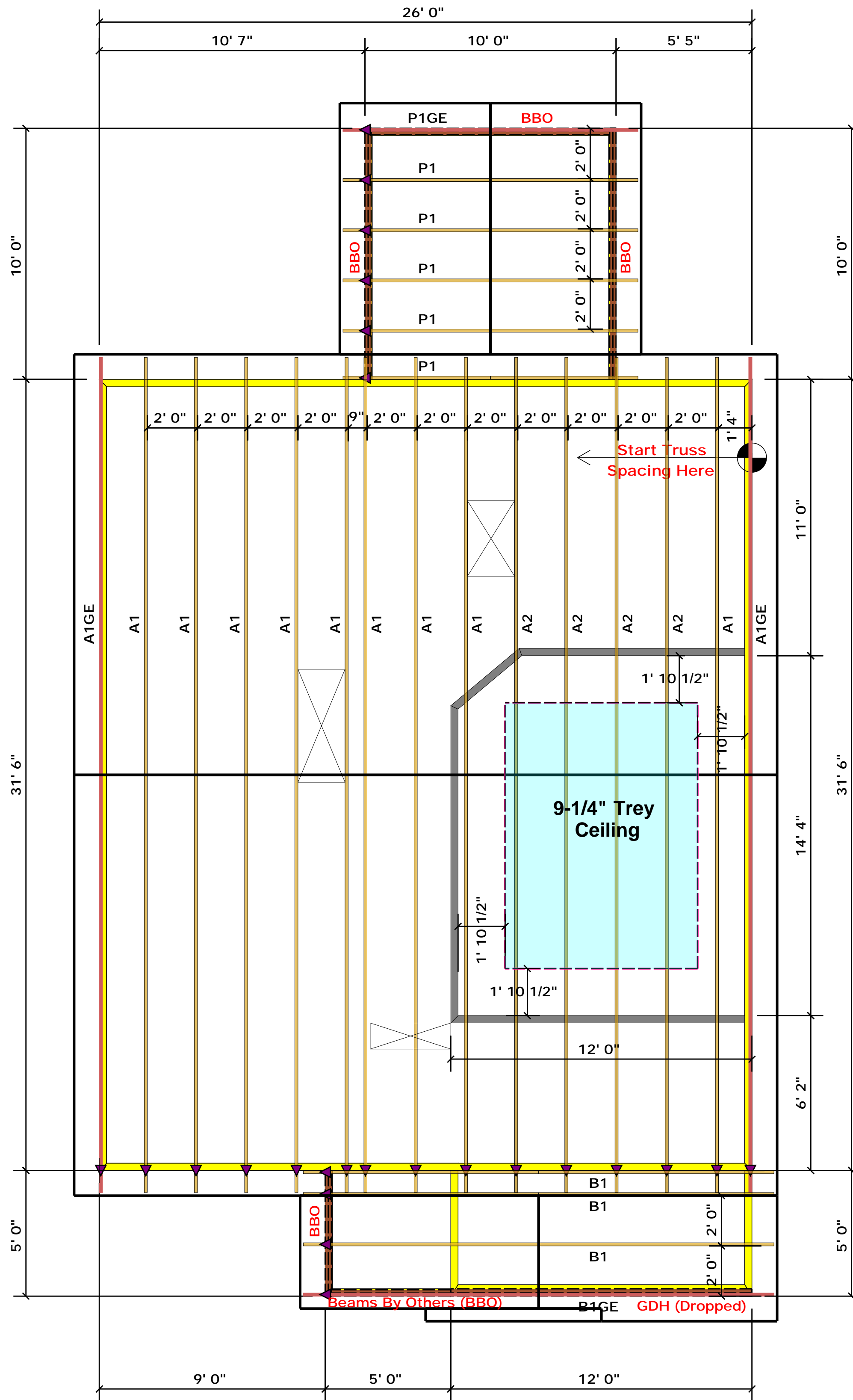
CITY / CO.	Harnett Co. / Harnett
ADDRESS	Lot 70 Thomas Farm
MODEL	Roof
DATE REV.	/ /
DRAWN BY	Christine Shivy
SALES REP.	Lenny Norris

THIS IS A TRUSS PLACEMENT DIAGRAM ONLY. These trusses are designed as individual building components to be incorporated into the building design at the specification of the building designer. See individual design sheets for each truss design identified on the placement drawing. The building designer is responsible for temporary and permanent bracing of the roof and floor system and for the overall structure. The design of the truss support structure including headers, beams, walls, and columns is the responsibility of the building designer. For general guidance regarding bracing, consult BCSH-B1 and BCSH-B3 provided with the truss delivery package or online @ sbcindustry.com

Bearing reactions less than or equal to 3000# are deemed to comply with the prescriptive Code requirements. The contractor shall refer to the attached Tables (derived from the prescriptive Code requirements) to determine the minimum foundation size and number of wood studs required to support reactions greater than 3000# but not greater than 15000#. A registered design professional shall be retained to design the support system for any reaction that exceeds those specified in the attached Tables. A registered design professional shall be retained to design the support system for all reactions that exceed 15000#.

Signature: Christine Shivy
 Christine Shivy

ROOF & FLOOR TRUSSES & BEAMS
 Reilly Road Industrial Park
 Fayetteville, N.C. 28309
 Phone: (910) 864-8787
 Fax: (910) 864-4444



▲ = Denotes Left End of Truss
(Reference Engineered Truss Drawing)

Truss Placement Plan SCALE: NTS

All Truss Reactions are Less than 3,000 lbs. Unless Noted Otherwise.
○ -- Denotes Reaction Greater than 3,000 lbs. Reaction / # of Studs

LOAD CHART FOR JACK STUDS

MEMBER SIZE (UP TO)	SPACING (DOWN TO)	LOAD (DOWN TO)
1700	1	2550
3400	2	5100
5100	3	7650
6800	4	10200
8500	5	12750
10200	6	15300
11900	7	
13600	8	
15300	9	

BUILDER	Weaver Development
JOB NAME	Lot 70 Thomas Farm
PLAN	Magnolia Elev. B
SEAL DATE	Seal Date
QUOTE #	Quote #
JOB #	J1220-5726

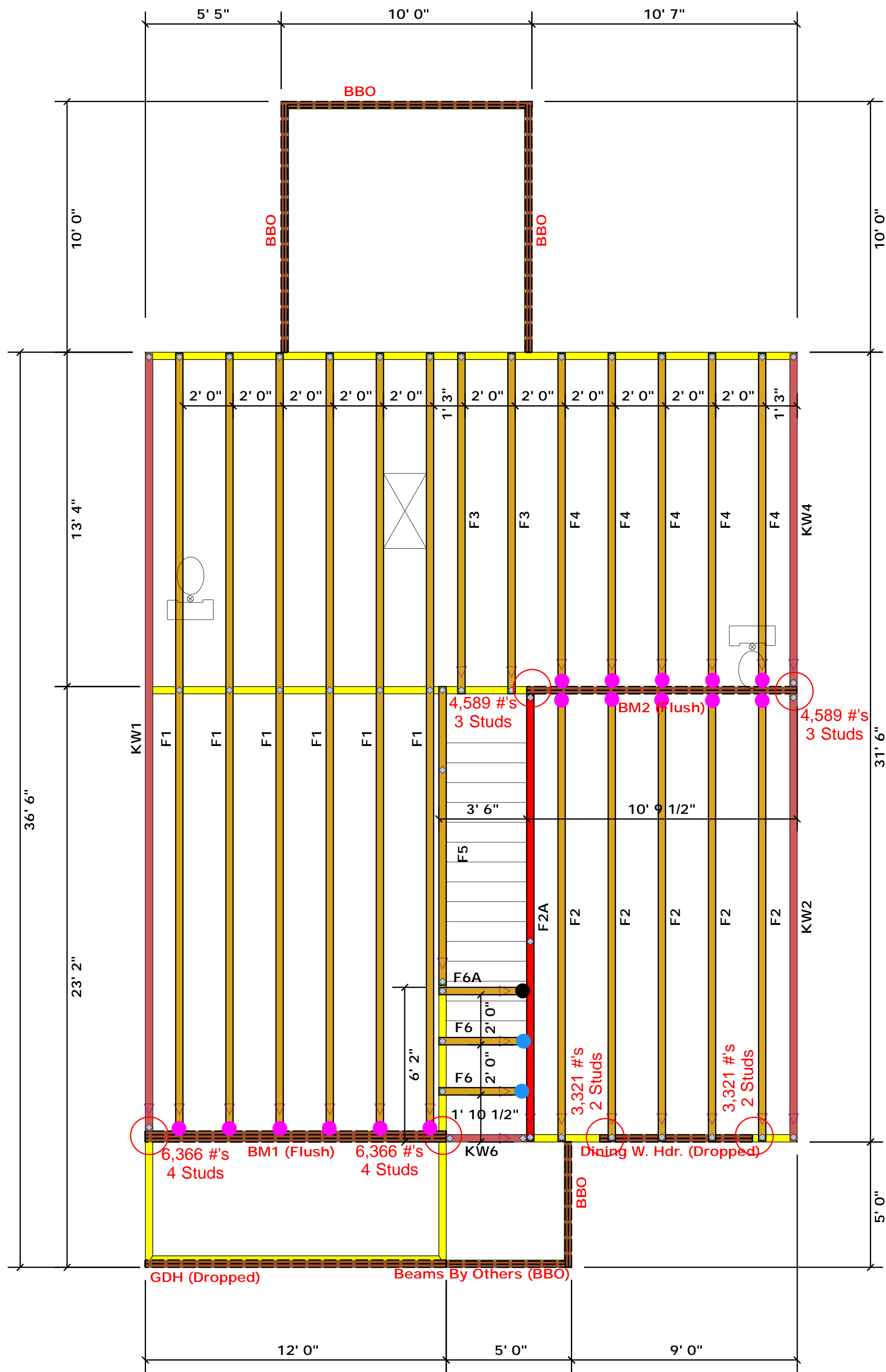
CITY / CO.	Harnett Co. / Harnett
ADDRESS	Lot 70 Thomas Farm
MODEL	Roof
DATE REV.	/ /
DRAWN BY	Christine Shivy
SALES REP.	Lenny Norris

THIS IS A TRUSS PLACEMENT DIAGRAM ONLY. These trusses are designed as individual building components to be incorporated into the building design at the specification of the building designer. See individual design sheets for each truss design identified on the placement drawing. The building designer is responsible for temporary and permanent bracing of the roof and floor system and for the overall structure. The design of the truss support structure including headers, beams, walls, and columns is the responsibility of the building designer. For general guidance regarding bracing, consult BCSH-B1 and BCSH-B3 provided with the truss delivery package or online @ sbcindustry.com

Bearing reactions less than or equal to 3000# are deemed to comply with the prescriptive Code requirements. The contractor shall refer to the attached Tables (derived from the prescriptive Code requirements) to determine the minimum foundation size and number of wood studs required to support reactions greater than 3000# but not greater than 15000#. A registered design professional shall be retained to design the support system for any reaction that exceeds those specified in the attached Tables. A registered design professional shall be retained to design the support system for all reactions that exceed 15000#.

Signature: Christine Shivy
Christine Shivy

ROOF & FLOOR TRUSSES & BEAMS
Reilly Road Industrial Park
Fayetteville, N.C. 28309
Phone: (910) 864-8787
Fax: (910) 864-4444



Truss Placement Plan SCALE: NTS

▲ = Denotes Left End of Truss
(Reference Engineered Truss Drawing)

All Truss Reactions are Less than 3,000 lbs. Unless Noted Otherwise.

○ -- Denotes Reaction Greater than 3,000 lbs.
Reaction / # of Studs

- = HUS410 (Qty. 16)
- = MSH422 (Qty. 2)
- = MSH422IF (Qty. 1)

Products				
PlotID	Length	Product	Plies	Net Qty
Dining W. Hdr. (Dropped)	7' 0"	1-3/4"x 9-1/4" LVL Kerto-S	2	2
GDH (Dropped)	12' 0"	1-3/4"x 11-7/8" LVL Kerto-S	2	2
BM1 (Flush)	12' 0"	1-3/4"x 16" LVL Kerto-S	3	3
BM2 (Flush)	11' 0"	1-3/4"x 16" LVL Kerto-S	2	2

LOAD CHART FOR JACK STUDS

LOAD REACTION (UP TO 1000 LBS)	SPACING	LOAD REACTION (UP TO 1000 LBS)	SPACING
1700	1	2550	1
3400	2	5100	2
5100	3	7650	3
6800	4	10200	4
8500	5	12750	5
10200	6	15300	6
11900	7		
13600	8		
15300	9		

BUILDER	Weaver Development	CITY / CO.	Harnett Co. / Harnett
JOB NAME	Lot 70 Thomas Farm	ADDRESS	Lot 70 Thomas Farm
PLAN	Magnolia Elev. B	MODEL	Floor
SEAL DATE	Seal Date	DATE REV.	/ /
QUOTE #	Quote #	DRAWN BY	Christine Shivy
JOB #	J1220-5727	SALES REP.	Lenny Norris

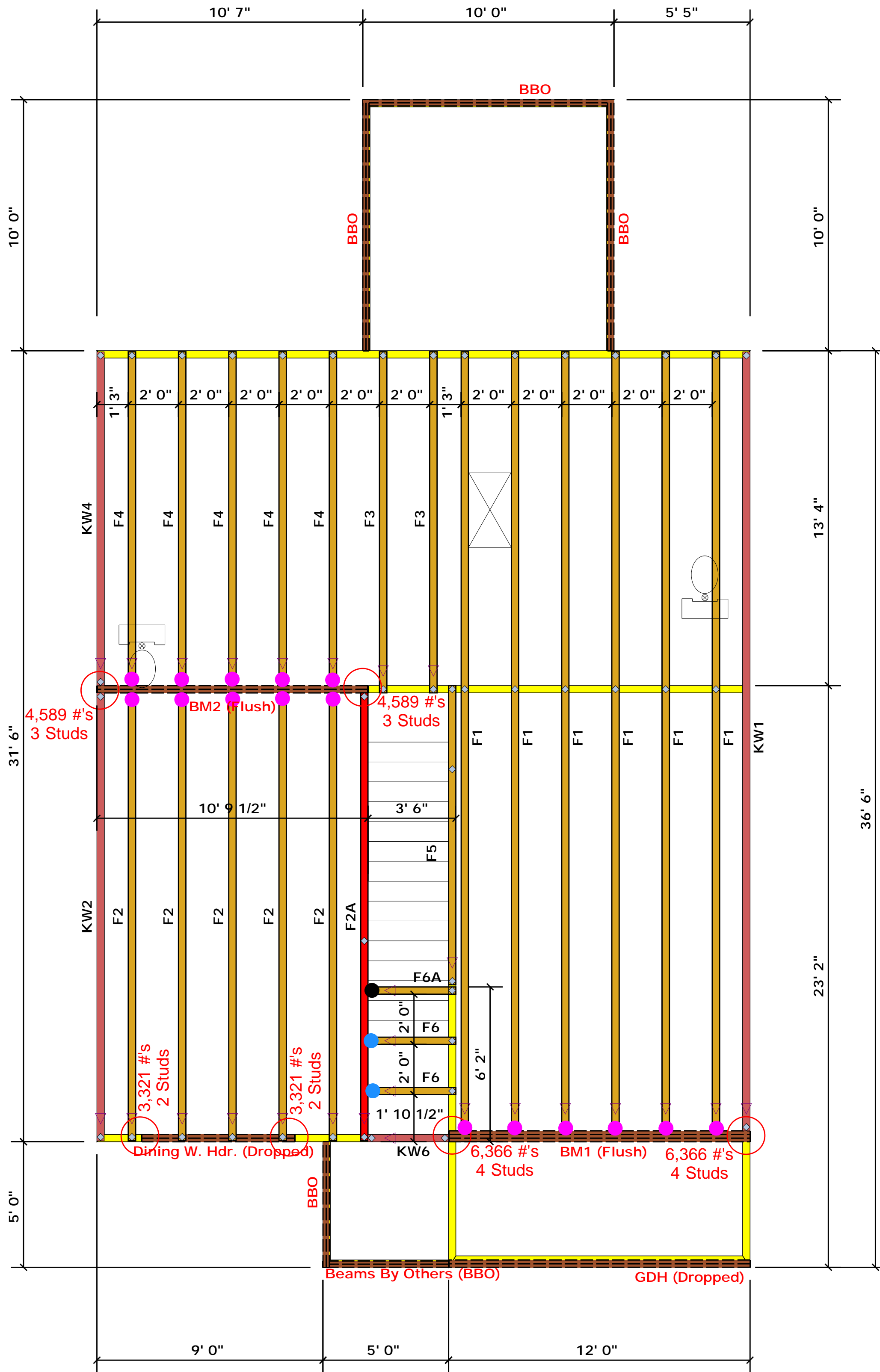
THIS IS A TRUSS PLACEMENT DIAGRAM ONLY. These trusses are designed as individual building components to be incorporated into the building design at the specification of the building designer. See individual design sheets for each truss design identified on the placement drawing. The building designer is responsible for temporary and permanent bracing of the roof and floor system and for the overall structure. The design of the truss support structure including headers, beams, walls, and columns is the responsibility of the building designer. For general guidance regarding bracing, consult BCSI-B1 and BCSI-B3 provided with the truss delivery package or online @ sbcindustry.com

Bearing reactions less than or equal to 3000# are deemed to comply with the prescriptive Code requirements. The contractor shall refer to the attached Tables (derived from the prescriptive Code requirements) to determine the minimum foundation size and number of wood studs required to support reactions greater than 3000# but not greater than 15000#. A registered design professional shall be retained to design the support system for any reaction that exceeds those specified in the attached Tables. A registered design professional shall be retained to design the support system for all reactions that exceed 15000#.

Signature Christine Shivy
Christine Shivy



ROOF & FLOOR TRUSSES & BEAMS
Reilly Road Industrial Park
Fayetteville, N.C. 28309
Phone: (910) 864-8787
Fax: (910) 864-4444



Truss Placement Plan SCALE: NTS

▲ = Denotes Left End of Truss
(Reference Engineered Truss Drawing)

All Truss Reactions are Less than 3,000 lbs. Unless Noted Otherwise.

○ -- Denotes Reaction Greater than 3,000 lbs.
Reaction / # of Studs

- = HUS410 (Qty. 16)
- = MSH422 (Qty. 2)
- = MSH422IF (Qty. 1)

Products				
PlotID	Length	Product	Plies	Net Qty
Dining W. Hdr. (Dropped)	7' 0"	1-3/4"x 9-1/4" LVL Kerto-S	2	2
GDH (Dropped)	12' 0"	1-3/4"x 11-7/8" LVL Kerto-S	2	2
BM1 (Flush)	12' 0"	1-3/4"x 16" LVL Kerto-S	3	3
BM2 (Flush)	11' 0"	1-3/4"x 16" LVL Kerto-S	2	2

LOAD CHART FOR JACK STUDS

LOAD (LBS)	SPACING (IN)	NO. OF STUDS
1700	1	2550
3400	2	5100
5100	3	7650
6800	4	10200
8500	5	12750
10200	6	15300
11900	7	
13600	8	
15300	9	

BUILDER	Weaver Development	CITY / CO.	Harnett Co. / Harnett
JOB NAME	Lot 70 Thomas Farm	ADDRESS	Lot 70 Thomas Farm
PLAN	Magnolia Elev. B	MODEL	Floor
SEAL DATE	Seal Date	DATE REV.	/ /
QUOTE #	Quote #	DRAWN BY	Christine Shivy
JOB #	J1220-5727	SALES REP.	Lenny Norris

THIS IS A TRUSS PLACEMENT DIAGRAM ONLY. These trusses are designed as individual building components to be incorporated into the building design at the specification of the building designer. See individual design sheets for each truss design identified on the placement drawing. The building designer is responsible for temporary and permanent bracing of the roof and floor system and for the overall structure. The design of the truss support structure including headers, beams, walls, and columns is the responsibility of the building designer. For general guidance regarding bracing, consult BCSH-B1 and BCSH-B3 provided with the truss delivery package or online @ sbcindustry.com

Bearing reactions less than or equal to 3000# are deemed to comply with the prescriptive Code requirements. The contractor shall refer to the attached Tables (derived from the prescriptive Code requirements) to determine the minimum foundation size and number of wood studs required to support reactions greater than 3000# but not greater than 15000#. A registered design professional shall be retained to design the support system for any reaction that exceeds those specified in the attached Tables. A registered design professional shall be retained to design the support system for all reactions that exceed 15000#.

Signature: Christine Shivy
Christine Shivy

ROOF & FLOOR TRUSSES & BEAMS
Reilly Road Industrial Park
Fayetteville, N.C. 28309
Phone: (910) 864-8787
Fax: (910) 864-4444