

**RENAISSANCE**  
RESIDENTIAL DESIGN, INC.  
RALEIGH, NC 27612  
(919) 848-8128  
WWW.RENDESIGN.COM

The art of transforming your vision into reality.  
RENAISSANCE RESIDENTIAL DESIGN, INC. HAS OVER THE RIGHT TO MAKE MODIFICATIONS TO ELECTRICAL, MECHANICAL, AND PLUMBING AND OTHER SPECIFICATIONS OF THE PROJECT FOR THE PURPOSE OF COMPLYING WITH ARCHITECTURAL CONCEPTS ONLY.

RENAISSANCE RESIDENTIAL DESIGN, INC. IS NOT RESPONSIBLE FOR THE DESIGN OF COMMON LAW COPYRIGHT AND OTHER PROTECTIVE RIGHTS IN THE PLANS. THE PLANS AND INSTRUMENTS ARE NOT TO BE REPRODUCED, COPIED, OR COPIED IN ANY FORM OR MANNER WITHOUT FIRST OBTAINING THE EXPRESS WRITTEN CONSENT OF RENDESIGN. RENDESIGN, INC. SHALL BE RESPONSIBLE FOR ANY THIRD PARTY WITHOUT FIRST OBTAINING WRITTEN PERMISSION AND CONSENT.

**WEAVER HOMES**  
CAROLINA COLLECTION  
LEYLAND DRIVE LEFT  
8545 WEAVER DRIVE, RALEIGH, NC 27615  
WWW.WEAVERHOMES.COM

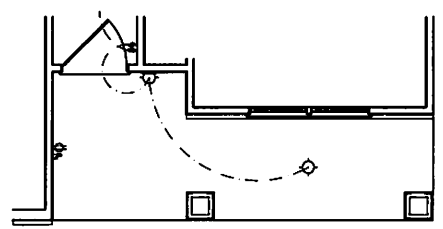
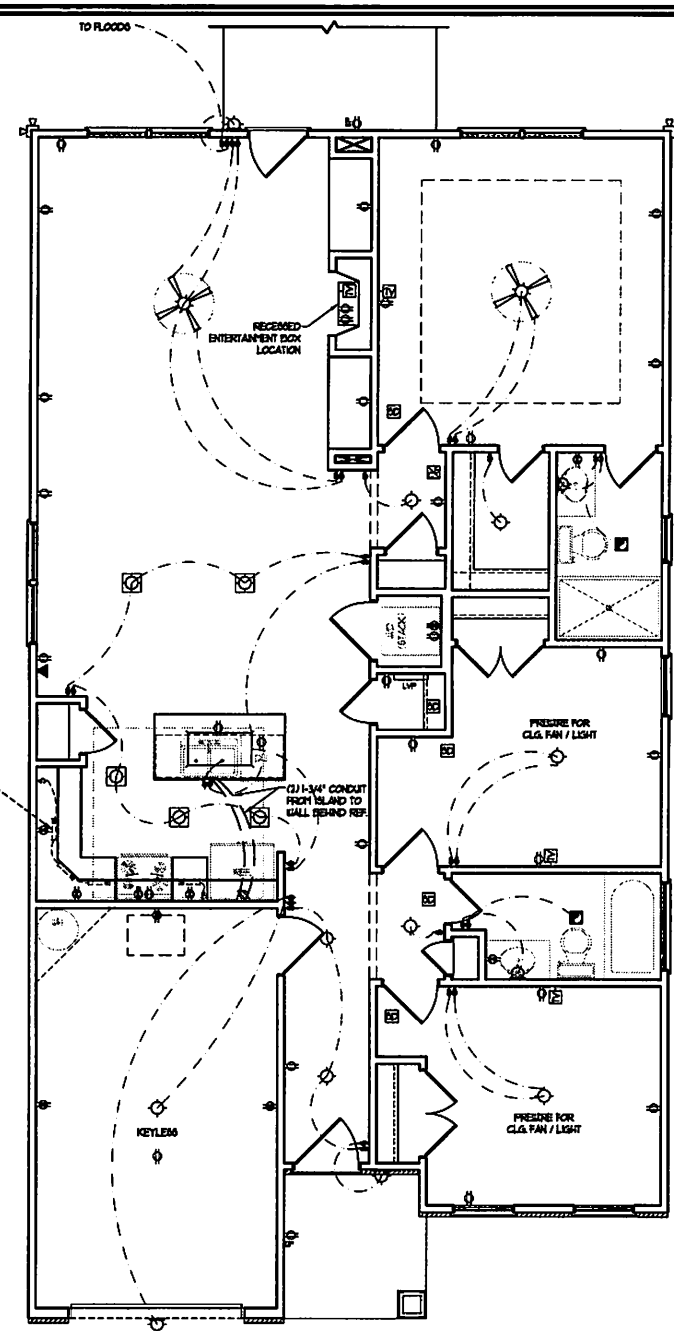
PLEASE REFER TO THE ELECTRICAL SYMBOLS LISTING FOR A COMPLETE LISTING OF ALL ELECTRICAL SYMBOLS AND NOTATIONS. ALL ELECTRICAL SYMBOLS AND NOTATIONS ARE SUBJECT TO CHANGE WITHOUT NOTICE. THE ELECTRICAL SYMBOLS LISTING IS THE ONLY AUTHORITY FOR THE CORRECT INTERPRETATION OF ALL ELECTRICAL SYMBOLS AND NOTATIONS. THE ELECTRICAL SYMBOLS LISTING IS THE ONLY AUTHORITY FOR THE CORRECT INTERPRETATION OF ALL ELECTRICAL SYMBOLS AND NOTATIONS.

**WEAVER HOMES**  
CAROLINA COLLECTION  
LEYLAND DRIVE LEFT

DATE: JUNE 15, 2020  
REV:  
SCALE: 1/4" = 1'-0"  
DRAWN BY: WO  
ENGINEERED BY:  
REVIEWED BY:  
FIRST FLOOR ELECTRICAL PLAN  
E-1

**ELECTRICAL LAYOUT NOTES:**  
1) BLOCK AND WIRE FOR ALL CEILING FANS PER PLAN.  
2) VANITY LIGHTS TO BE SET @ 30" AFF. (TYP.)  
3) ADDITIONAL EXTERIOR OUTLETS REQUIRED BY CODE TO BE LOCATED BY ELECTRICIAN.  
4) PLACE SWITCHES 6" MIN FROM ROUGH OPENING.

- ELECTRICAL LEGEND**
- ⊕ 80 V OUTLET
  - ⊕ 80 V GFI OUTLET
  - ⊕ 80 V SWITCHED OUTLET
  - ⊕ 80 V BAREBOARD OUTLET
  - ⊕ 4-PLUG
  - ⊕ COUNTER OR FLOOR MOUNTED
  - ⊕ COUNTER OR FLOOR MOUNTED 80V GFI
  - ⊕ WEATHERPROOF
  - ⊕ 120 V OUTLET
  - ⊕ 120 V DEDICATED CIRCUIT
  - ⊕ 220 V DEDICATED CIRCUIT
  - ⊕ SPECIAL PURPOSE (120 V, ETC)
  - ⊕ WALL MOUNT LIGHT
  - ⊕ CEILING MOUNT LIGHT
  - ⊕ PENDANT LIGHT
  - ⊕ RECESSED CAN LIGHT
  - ⊕ HIN CAN LIGHT
  - ⊕ EYEBALL LIGHT
  - ⊕ FLUORESCENT LIGHT
  - ⊕ UNDERCABINET LIGHT
  - ⊕ FLOOD LIGHT
  - ⊕ SWITCH
  - ⊕ DIMMER SWITCH
  - ⊕ TELEPHONE
  - ⊕ DATA
  - ⊕ TELEPHONE AND DATA
  - ⊕ TV CONNECTION
  - ⊕ TV/ DATA
  - ⊕ CONDUIT FOR COMPONENT WIRING
  - ⊕ SPEAKER
  - ⊕ 80 V SMOKE/ CO DETECTOR
  - ⊕ 80 V SMOKE DETECTOR
  - ⊕ EXHAUST FAN
  - ⊕ LOW VOLTAGE PANEL
  - ⊕ ALARM PANEL
  - ⊕ CEILING FAN
  - ⊕ CEILING FAN W/ LIGHT



SCALE NOTE: 18x24 PRINTS ARE TO SCALE AS NOTED.  
11x17 PRINTS ARE NOT TO SCALE

**FRONT PORCH AND BEDROOM #2 WINDOW ELEVATIONS-B4C**



**BRACE WALL PANEL NOTES:**

EXTERIOR WALLS: ALL EXTERIOR WALLS TO BE SHEATHED WITH CS-MSP OR CS-SFB IN ACCORDANCE WITH SECTION R502.10.3 UNLESS NOTED OTHERWISE.

REQUIRED LENGTH OF BRACING: REQUIRED BRACE WALL LENGTH FOR EACH SIDE OF THE CIRCUMSCRIBED RECTANGLE ARE INTERPOLATED PER TABLE R502.10.3. METHODS CS-MSP AND CS-SFB CONTRIBUTE THEIR ACTUAL LENGTH. METHOD GB CONTRIBUTES 0.5 ITS ACTUAL LENGTH. METHOD PF CONTRIBUTES 1.5 TIMES ITS ACTUAL LENGTH.

GYPSUM: ALL INTERIOR SIDES OF EXTERIOR WALLS AND BOTH SIDES OF INTERIOR WALLS TO HAVE 1/2" GYPSUM INSTALLED. WHEN NOT USING METHOD GB GYPSUM TO BE FASTENED PER TABLE R702.3.5. METHOD GB TO BE FASTENED PER TABLE R502.10.1.

ND: 800 LBS HOLD DOWN DEVICE FASTENED TO THE EDGE OF THE BRACE WALL PANEL, NEAREST TO THE CORNER

METHODS: PER TABLE R502.10.1

**STRUCTURAL NOTES:**

1. ALL FRAMING LUMBER TO BE SPF #2 (UNO). ALL TREATED LUMBER TO BE SYP #2 (UNO).
2. ALL LOAD BEARING HEADERS TO BE (2) 2 x 4 (UNO).
3. INSTALL AN EXTRA JOIST UNDER WALLS PARALLEL TO FLOOR JOISTS
4. WINDOW AND DOOR HEADERS TO BE SUPPORTED W/ (1) JACK STUD AND (1) KING STUD EA. END (UNO). SEE TABLE R502.7.5 FOR ADDITIONAL KING STUD REQUIREMENTS.
5. SQUARES DENOTE POINT LOADS WHICH REQUIRE SOLID BLOCKING TO GIRDER OR FOUNDATION. ALL SQUARES TO BE (2) STUDS (UNO.)
6. ALL 4 x 4 POSTS SHALL BE ANCHORED TO SLABS W/ SIMPSON ABUM4 POST BASES (OR EQUAL) AND 6 x 6 POSTS W/ ABUS6 POST BASES (OR EQUAL) (UNO). ALL 4 x 4 AND 6 x 6 POSTS TO BE INSTALLED WITH 700 LB CAPACITY UPLIFT CONNECTORS AT TOP (UNO).
7. FOR FIBERGLASS, ALUMINUM, OR COLLUMB. ENG. BY OTHERS, SECURE TO SLAB W/ (2) METAL ANGLES USING 2" CONC. SCREWS. FASTEN ANGLES TO COLLUMBS W/ 1/4" THROUGH BOLTS W/ NUTS AND WASHERS. LOCATE ANGLES ON OPPOSITE SIDES OF COLUMN. THROUGH BOLTS MUST BE INSTALLED PRIOR TO SETTING COLUMN.

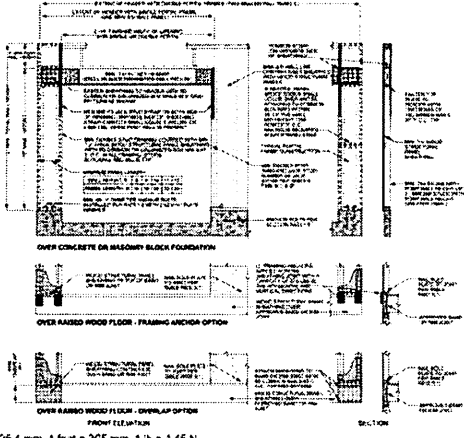
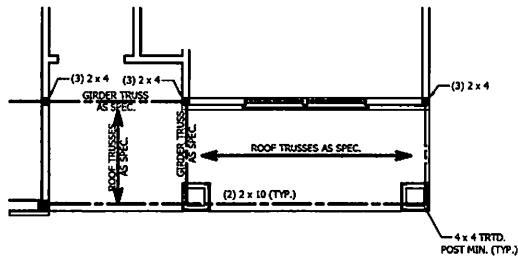
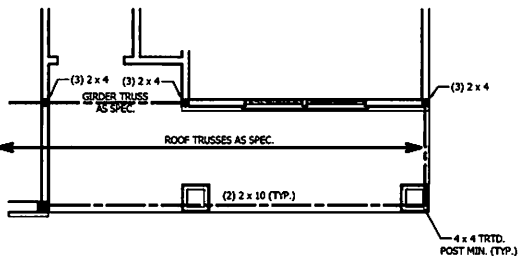


FIGURE R502.10.1  
METHOD PF—PORTAL FRAME CONSTRUCTION

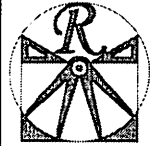
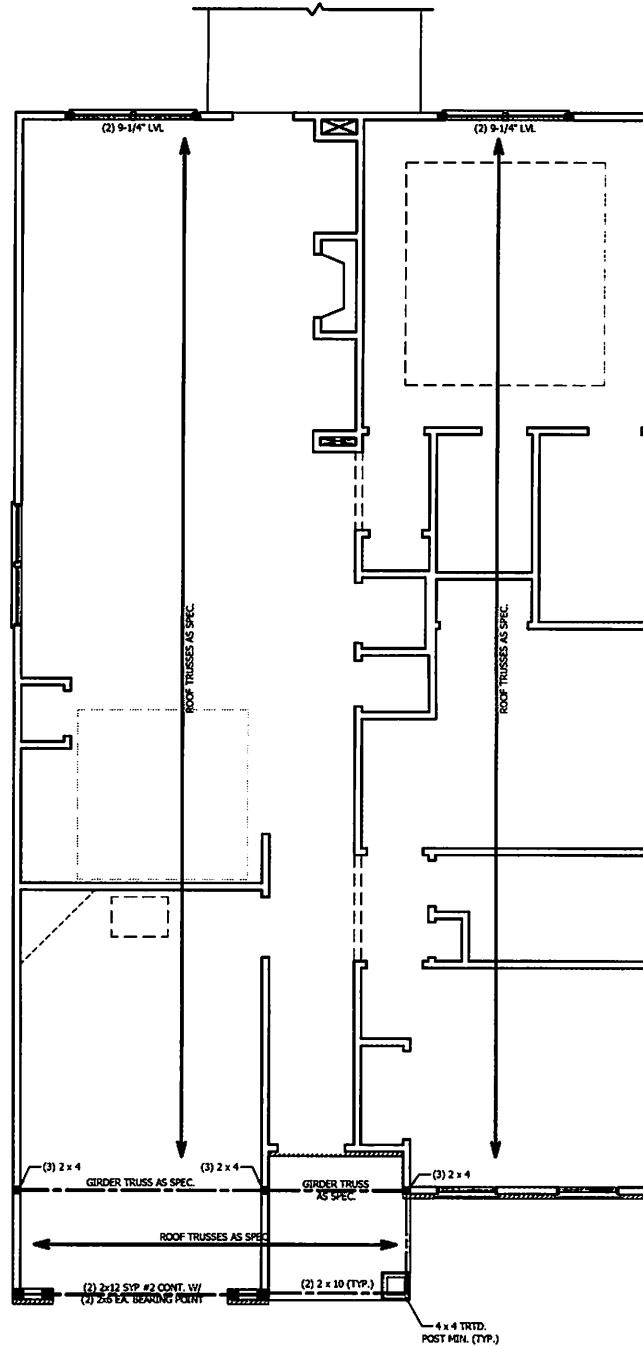
FRONT PORCH  
AND BEDROOM #2  
WINDOW  
ELEVATION B



FRONT PORCH  
AND BEDROOM #2  
WINDOW  
ELEVATION C



SCALE NOTE: 18x24 PRINTS ARE TO SCALE AS NOTED.  
11x17 PRINTS ARE NOT TO SCALE



**RENAISSANCE**

RESIDENTIAL DESIGN, INC.

RALEIGH, NC 27612

(919) 849-1128

WWW.RHDCAQUILA.COM

The Art of Building Your Vision into Reality

RENAISSANCE RESIDENTIAL DESIGN, INC. WE RESERVE THE RIGHT TO MAKE MODIFICATIONS TO THE PLAN. UNLESS OTHERWISE SPECIFIED, ALL DIMENSIONS ARE FOR THE FINISH OR CONSTRUCTION ANCHOR POINT UNLESS OTHERWISE SPECIFIED.

RENAISSANCE RESIDENTIAL DESIGN, INC. WE RESERVE THE RIGHT TO MAKE MODIFICATIONS TO THE PLAN. UNLESS OTHERWISE SPECIFIED, ALL DIMENSIONS ARE FOR THE FINISH OR CONSTRUCTION ANCHOR POINT UNLESS OTHERWISE SPECIFIED.

**WEAVER  
HOMES**  
3100 Weaver Road, Suite 100, Raleigh, NC 27612  
www.weaverhomes.com

PLEASE CONSULT THE ARCHITECTURAL PLAN FOR ALL DIMENSIONS AND SPECIFICATIONS. ALL DIMENSIONS ARE FOR THE FINISH OR CONSTRUCTION ANCHOR POINT UNLESS OTHERWISE SPECIFIED. ALL DIMENSIONS ARE FOR THE FINISH OR CONSTRUCTION ANCHOR POINT UNLESS OTHERWISE SPECIFIED.

**WEAVER HOMES  
CAROLINA COLLECTION  
LEYLAND DRIVE LEFT**

DATE: JUNE 15, 2020

REV

SCALE: 1/4" = 1'-0"

DRAWN BY: WJ

ENGINEERED BY:

REVIEWED BY:

SECOND FLOOR  
FRAMING PLAN

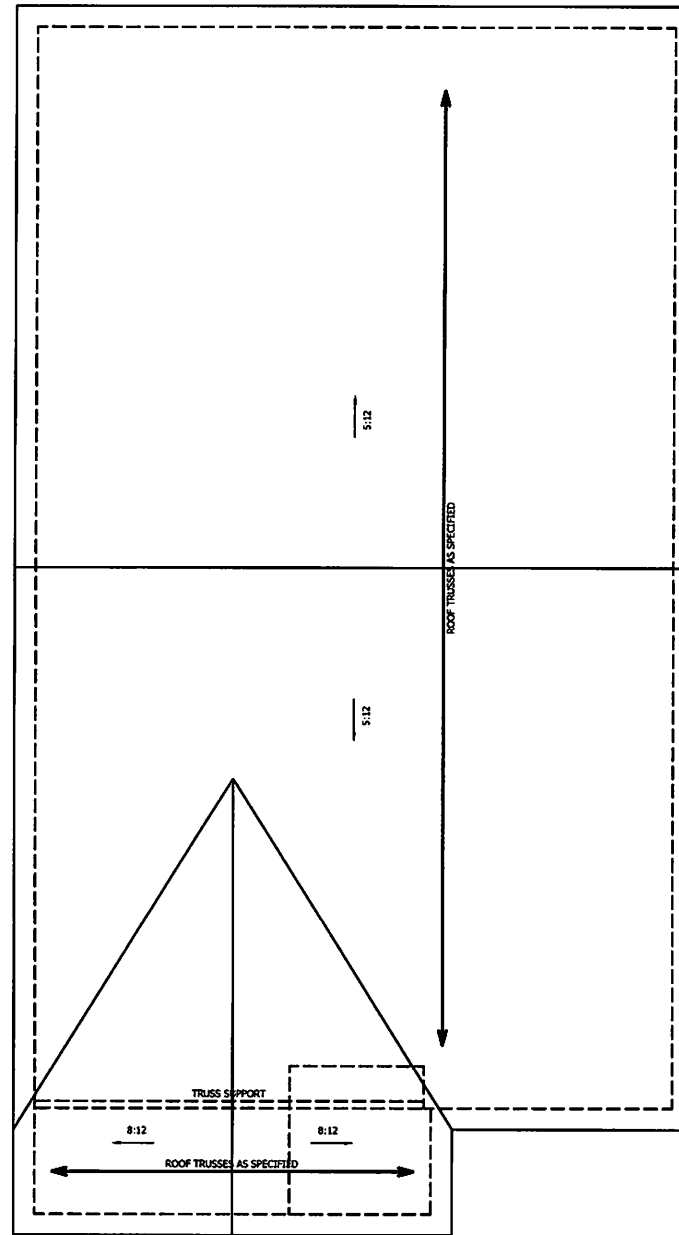
S-2

**ATTIC VENT CALCULATION:**

1756 SQ. FT. OF ATTIC DIVIDED BY 150 REQUIRES 11.7 SQ. FT. OF NET FREE VENTILATING AREA (MIN.).

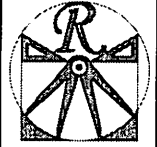
**STRUCTURAL NOTES:**

1. ALL FRAMING LUMBER TO BE #2 SPF (WHC).
2. HIP BRACES ARE TO BE SPACED A MIN. OF 8'-0". FASTEN MEMBERS WITH THREE ROWS OF 12d NAILS @ 16" O.C. (TYP.)
3. STICK FRAME OVER-FRAMED ROOF SECTIONS W/ 2 x 8 RIDGES, 2 x 6 RAFTERS @ 16" O.C. AND FLAT 2 x 10 VALLEYS OR USE VALLEY TRUSSES. FASTEN FLAT VALLEYS TO RAFTERS OR TRUSSES WITH SIMPSON H2.5A HURRICANE TIES @ 32" O.C. MAX. PASS HURRICANE TIES THROUGH NOTCH IN ROOF SHEATHING. EACH RAFTER IS TO BE FASTENED TO THE FLAT VALLEY WITH A MIN. OF (6) 12d TOE NAILS.
5. REFER TO SECTION R802.11 OF THE 2018 NRC FOR REQUIRED UPLIFT RESISTANCE AT RAFTERS AND TRUSSES.



**ELEVATION A**

SCALE NOTE: 18x24 PRINTS ARE TO SCALE AS NOTED.  
11x17 PRINTS ARE NOT TO SCALE



**RENAISSANCE**  
RESIDENTIAL DESIGN, INC.  
RALEIGH, NC 27612  
(919) 848-4128  
WWW.RDCAQOLINK.COM

THE ACT OF ENDORSEMENT OF THIS DESIGN BY WEAVER HOMES IS NOT AN ENDORSEMENT OF THE DESIGN OR THE DESIGNER. WEAVER HOMES IS NOT RESPONSIBLE FOR ANY ERRORS OR OMISSIONS IN THIS DESIGN. THE DESIGN IS PROVIDED AS IS AND WITHOUT WARRANTY. THE DESIGN IS THE PROPERTY OF RENAISSANCE RESIDENTIAL DESIGN, INC. AND IS NOT TO BE REPRODUCED, COPIED, OR TRANSMITTED IN ANY FORM OR BY ANY MEANS, WITHOUT THE WRITTEN CONSENT OF RENAISSANCE RESIDENTIAL DESIGN, INC. ANY SUCH REPRODUCTION OR TRANSMISSION WITHOUT THE WRITTEN CONSENT OF RENAISSANCE RESIDENTIAL DESIGN, INC. IS PROHIBITED AND WILL BE SUBJECT TO LEGAL ACTION.

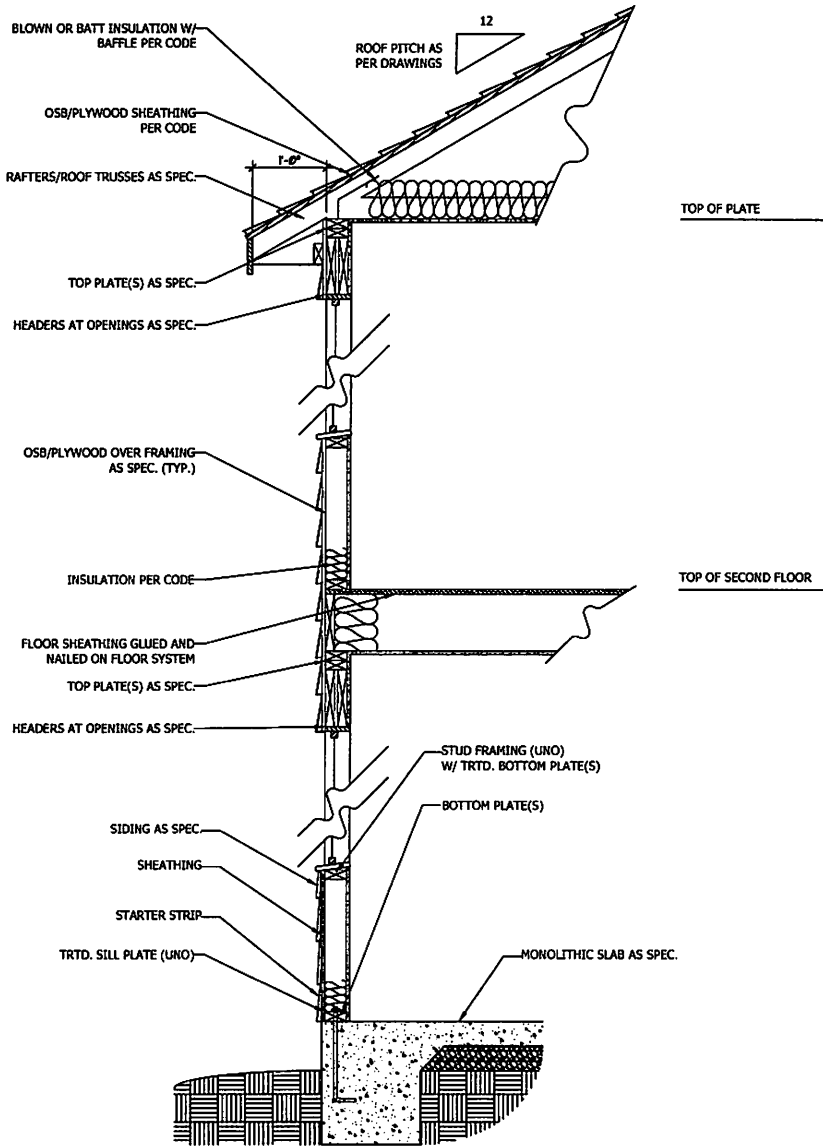
**WEAVER**  
**HOMES**  
3100 Weaver Road, Raleigh, NC 27612  
www.weaverhomes.com

WEAVER HOMES IS A REGISTERED TRADEMARK OF WEAVER HOMES, INC. WEAVER HOMES IS NOT RESPONSIBLE FOR ANY ERRORS OR OMISSIONS IN THIS DESIGN. THE DESIGN IS PROVIDED AS IS AND WITHOUT WARRANTY. THE DESIGN IS THE PROPERTY OF RENAISSANCE RESIDENTIAL DESIGN, INC. AND IS NOT TO BE REPRODUCED, COPIED, OR TRANSMITTED IN ANY FORM OR BY ANY MEANS, WITHOUT THE WRITTEN CONSENT OF RENAISSANCE RESIDENTIAL DESIGN, INC. ANY SUCH REPRODUCTION OR TRANSMISSION WITHOUT THE WRITTEN CONSENT OF RENAISSANCE RESIDENTIAL DESIGN, INC. IS PROHIBITED AND WILL BE SUBJECT TO LEGAL ACTION.

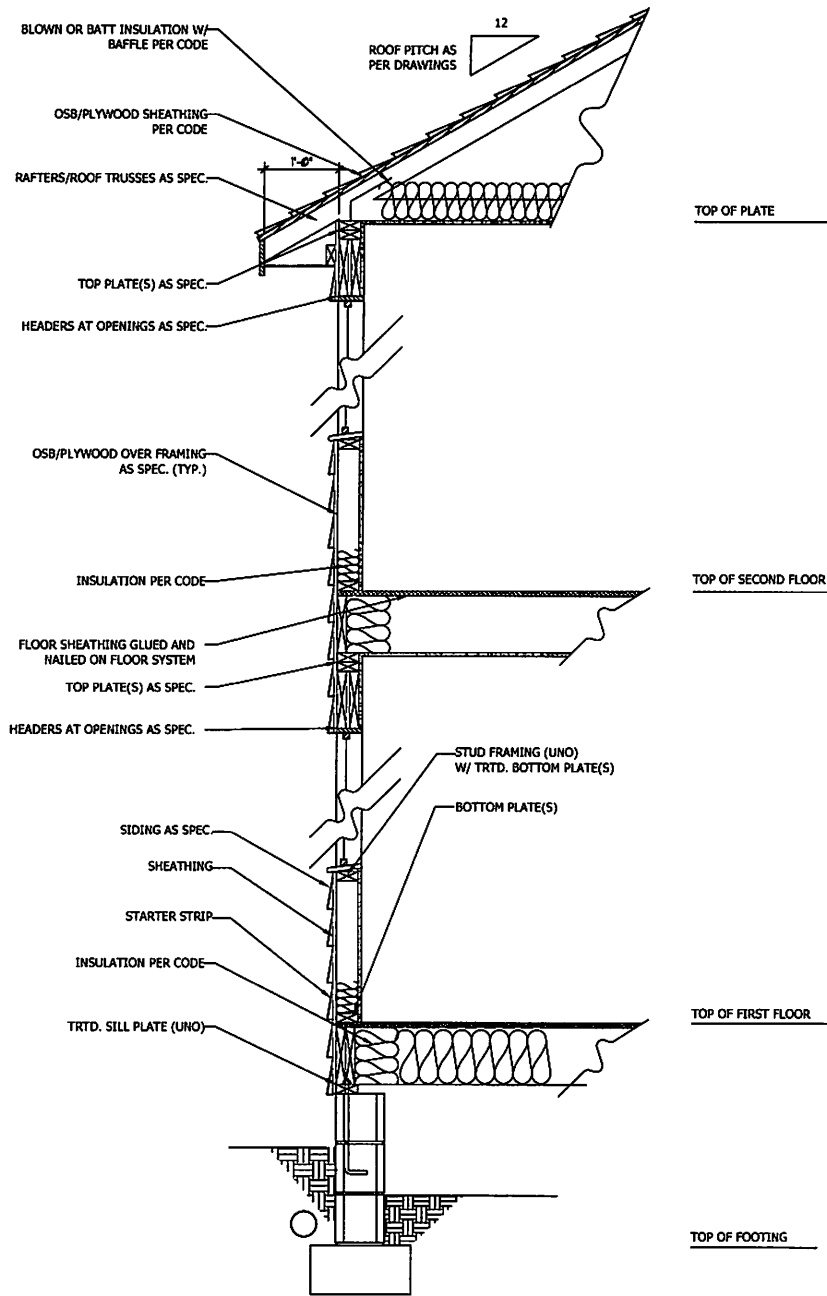
**WEAVER HOMES**  
**CAROLINA COLLECTION**  
**LEYLAND DRIVE LEFT**

DATE	JUNE 15, 2020
REV.	
SCALE	1/4" = 1'-0"
DRAWN BY	WCO
ENGINEERED BY	
REVIEWED BY	

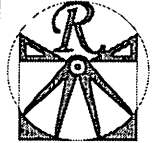
ROOF PLAN  
ELEVATION A  
**S-3**



**WALL SECTION W/ SLAB**  
W/ STD. SIDING SHOWN (NTS)



**WALL SECTION W/ CRAWL SPACE**  
W/ STD. SIDING SHOWN (NTS)



**RENAISSANCE**  
RESIDENTIAL DESIGN, INC.  
RALEIGH, NC 27612  
(919) 849-4128  
WWW.RENOCAROLINA.COM

THIS SET OF DRAWINGS IS YOUR PROPERTY AND IS NOT TO BE REPRODUCED OR TRANSMITTED IN ANY FORM OR BY ANY MEANS, ELECTRONIC OR MECHANICAL, INCLUDING PHOTOCOPYING, RECORDING, OR BY ANY INFORMATION STORAGE AND RETRIEVAL SYSTEM, WITHOUT THE WRITTEN PERMISSION OF RENOCAROLINA.COM. ANY UNAUTHORIZED REPRODUCTION OR TRANSMISSION OF THIS SET OF DRAWINGS IS STRICTLY PROHIBITED. ANY SUCH REPRODUCTION OR TRANSMISSION IS AT THE USER'S SOLE RISK AND WITHOUT LIABILITY TO RENOCAROLINA.COM.

RENAISSANCE RESIDENTIAL DESIGN, INC. IS AN EQUAL OPPORTUNITY AFFIRMATIVE ACTION EMPLOYER. WE ARE COMMITTED TO DIVERSITY AND INCLUSION IN OUR WORKPLACE. WE ENCOURAGE ALL QUALIFIED APPLICANTS TO APPLY. IF YOU ARE AN INDIVIDUAL WITH A DISABILITY AND NEED A REASONABLE ACCOMMODATION TO PARTICIPATE IN THE EMPLOYMENT PROCESS, PLEASE CONTACT US AT (919) 849-4128. WE WILL MAKE REASONABLE ACCOMMODATIONS AVAILABLE TO YOU.

**WEAVER**  
**HOMES**  
3500 W. WEAVER DRIVE • FAYETTEVILLE, NC 28403  
www.weaverhomes.com

WEAVER HOMES IS AN EQUAL OPPORTUNITY AFFIRMATIVE ACTION EMPLOYER. WE ARE COMMITTED TO DIVERSITY AND INCLUSION IN OUR WORKPLACE. WE ENCOURAGE ALL QUALIFIED APPLICANTS TO APPLY. IF YOU ARE AN INDIVIDUAL WITH A DISABILITY AND NEED A REASONABLE ACCOMMODATION TO PARTICIPATE IN THE EMPLOYMENT PROCESS, PLEASE CONTACT US AT (919) 849-4128. WE WILL MAKE REASONABLE ACCOMMODATIONS AVAILABLE TO YOU.

**WEAVER HOMES**  
**CAROLINA COLLECTION**  
**LEYLAND DRIVE LEFT**

DATE: JUNE 15, 2020  
REV: \_\_\_\_\_  
SCALE: 1/4" = 1'-0"  
DRAWN BY: WJ  
ENGINEERED BY: \_\_\_\_\_  
REVIEWED BY: \_\_\_\_\_  
TYPICAL WALL SECTIONS

D-1