

RENAISSANCE
RESIDENTIAL DESIGN, INC.
RALEIGH, NC 27612
(919) 649-4128
WWW.RENOCAROLINA.COM

THE ART OF EMPOWERING YOUR VISION INTO REALITY

RENAISSANCE RESIDENTIAL DESIGN, INC. IS AN EQUAL OPPORTUNITY EMPLOYER. WE RESERVE THE RIGHT TO MAKE ANY CHANGES TO THE DESIGN OR MATERIALS AND SPECIFICATIONS WITHOUT NOTICE. THESE CHANGES ARE FOR THE PURPOSE OF CORRECTING AN ARCHITECTURAL CONCEPT ONLY.

RENAISSANCE RESIDENTIAL DESIGN, INC. IS NOT BEING BOUND BY ANY STATE OR FEDERAL COMMON LAW COPYRIGHT AND OTHER PROTECTIONS CREATED BY THESE PLANS. THESE PLANS AND DRAWINGS ARE NOT TO BE REPRODUCED, CHANGED, COPIED IN ANY FORM OR MANNER WITHOUT FIRST OBTAINING THE EXPRESS WRITTEN CONSENT OF RENAISSANCE RESIDENTIAL DESIGN, INC. NO LIABILITY IS TO BE ASSIGNED TO ANY THIRD PARTY WITHOUT FIRST OBTAINING THE WRITTEN PERMISSION AND CONSENT.

WEAVER
HOMES
3016 W. Weaver Parkway, Raleigh, NC 27612
919-420-2200 • 919-420-2201
www.weaverhomes.com

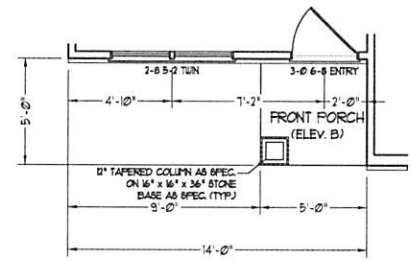
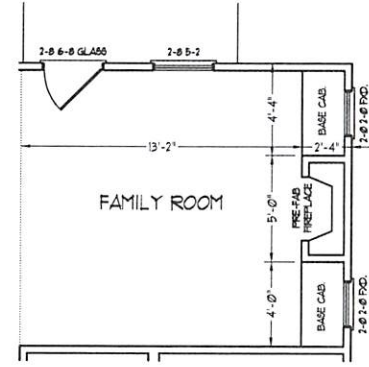
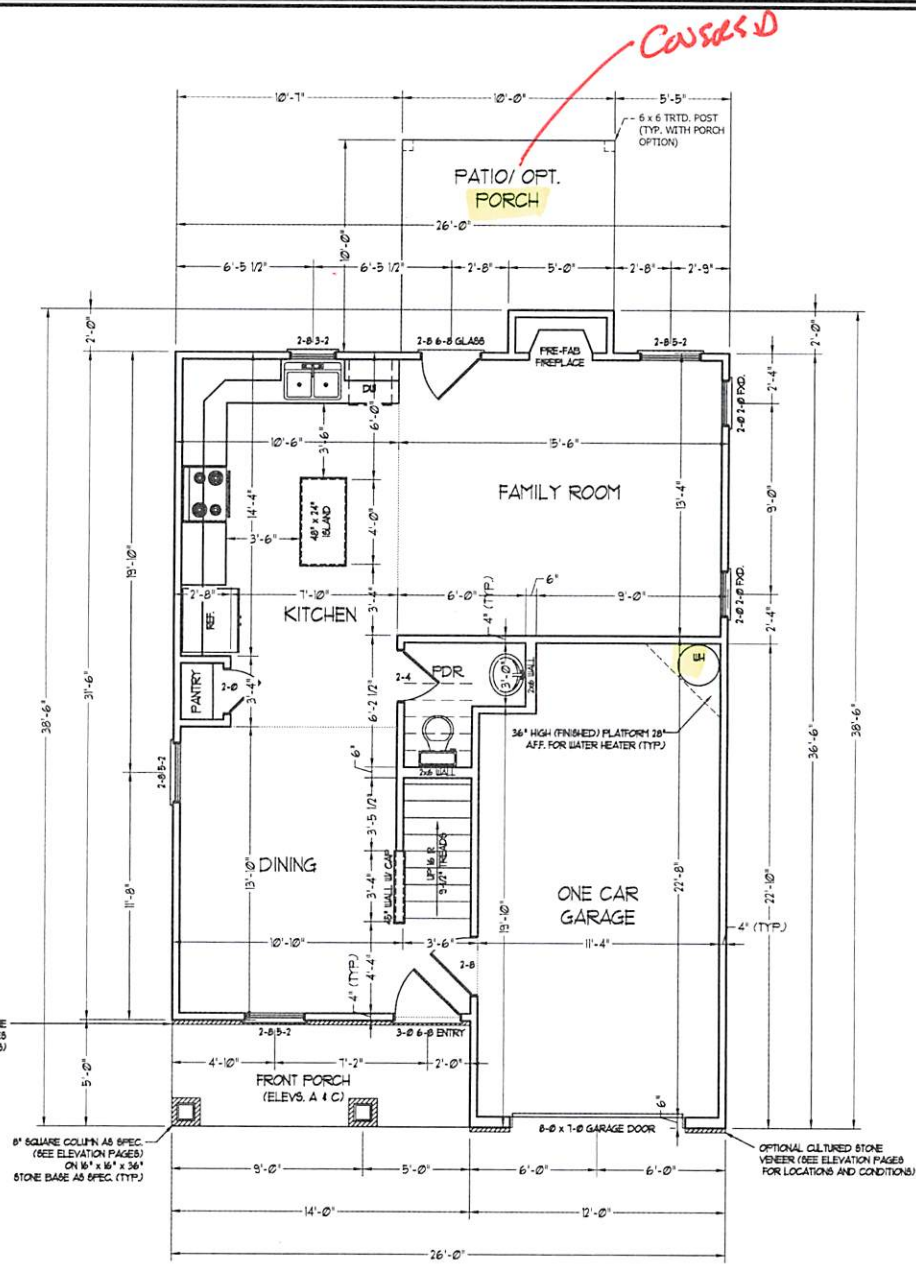
FILES FROM THESE PLANS ARE SUBJECT TO THE FOLLOWING: THESE PLANS, DRAWINGS, SPECIFICATIONS, AND NOTATIONS ARE THE PROPERTY OF RENAISSANCE RESIDENTIAL DESIGN, INC. AND ARE TO BE USED ONLY FOR THE PROJECT AND SITE SPECIFICALLY IDENTIFIED HEREIN. ANY REUSE, REPRODUCTION, OR MODIFICATION OF THESE PLANS WITHOUT THE WRITTEN PERMISSION OF RENAISSANCE RESIDENTIAL DESIGN, INC. IS STRICTLY PROHIBITED.

WEAVER HOMES
CAROLINA COLLECTION
MAGNOLIA

DATE: JUNE 30, 2020
REV:
SCALE: 1/4" = 1'-0"
DRAWN BY: WO
ENGINEERED BY:
REVIEWED BY:

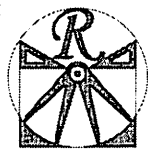
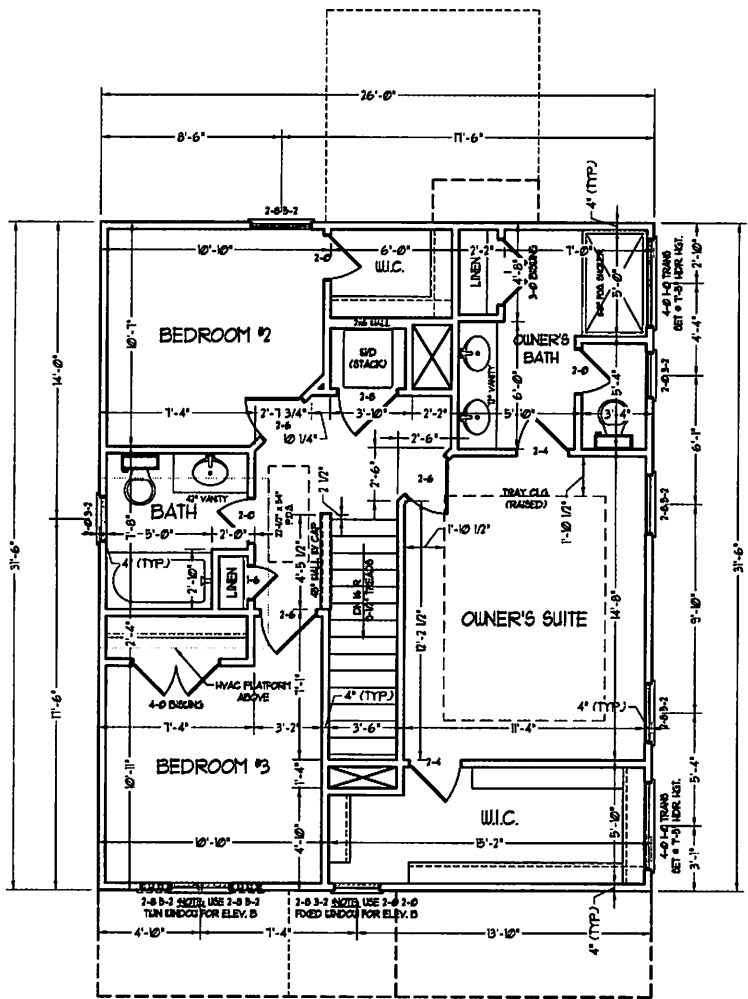
FIRST FLOOR
PLAN
A-4

SQUARE FOOTAGE (IFS)	
1st FLOOR:	581 SQ. FT.
2nd FLOOR:	141 SQ. FT.
TOTAL:	1378 SQ. FT.
GARAGE:	246 SQ. FT.
FRONT PORCH (ELEV.-A/C):	10 SQ. FT.
FRONT PORCH (ELEV.-B):	25 SQ. FT.
STD. REAR PATIO:	100 SQ. FT.
OPT. REAR PORCH:	100 SQ. FT.



FRONT PORCH AND DINING ROOM WINDOW ELEVATION B

SCALE NOTE: 18x24 PRINTS ARE TO SCALE AS NOTED.
11x17 PRINTS ARE NOT TO SCALE



RENAISSANCE
RESIDENTIAL DESIGN, INC.
RALEIGH, NC 27612
WWW.RENAISSANCEDESIGN.COM

RENAISSANCE RESIDENTIAL DESIGN, INC. HAS THE RIGHT TO MAKE AND/OR SELL ANY OF THE ARCHITECTURAL CONCEPTS, SKETCHES AND SPECIFICATIONS AND TO REPRODUCE THEM IN WHOLE OR IN PART FOR THE PURPOSE OF CREATING AN ARCHITECTURAL CONCEPT ONLY.

RENAISSANCE RESIDENTIAL DESIGN, INC. HEREBY DISCLAIMS ANY LIABILITY FOR COMMON LAW COPYRIGHT AND OTHER PROPRITY RIGHTS IN THESE PLANS. THESE PLANS AND DIMENSIONS ARE NOT TO BE REPRODUCED, COPIED, OR COPIED AS ANY FORM OR MANNER WITHOUT THE WRITTEN CONSENT OF RENAISSANCE RESIDENTIAL DESIGN, INC. NO PART OF THIS DOCUMENT IS TO BE REPRODUCED OR TRANSMITTED IN ANY FORM OR BY ANY MEANS WITHOUT THE WRITTEN PERMISSION AND CONSENT.

WEAVER
HOMES
3500 Magnolia Parkway • Fayetteville, NC 28403
www.weaverhomes.com

PLEASE READ THESE ARCHITECTURAL CONCEPTS AND PLANS CAREFULLY. THESE PLANS AND DIMENSIONS ARE NOT TO BE REPRODUCED, COPIED, OR COPIED AS ANY FORM OR MANNER WITHOUT THE WRITTEN CONSENT OF RENAISSANCE RESIDENTIAL DESIGN, INC. NO PART OF THIS DOCUMENT IS TO BE REPRODUCED OR TRANSMITTED IN ANY FORM OR BY ANY MEANS WITHOUT THE WRITTEN PERMISSION AND CONSENT.

WEAVER HOMES
CAROLINA COLLECTION
MAGNOLIA

DATE	JUNE 30, 2010
REV	
SCALE	1/4" = 1'-0"
DRAWN BY	WO
ENGINEERED BY	
REVIEWED BY	

SECOND FLOOR PLAN

A-5

SCALE NOTE: 1/8x24 PRINTS ARE TO SCALE AS NOTED.
11x17 PRINTS ARE NOT TO SCALE

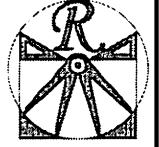
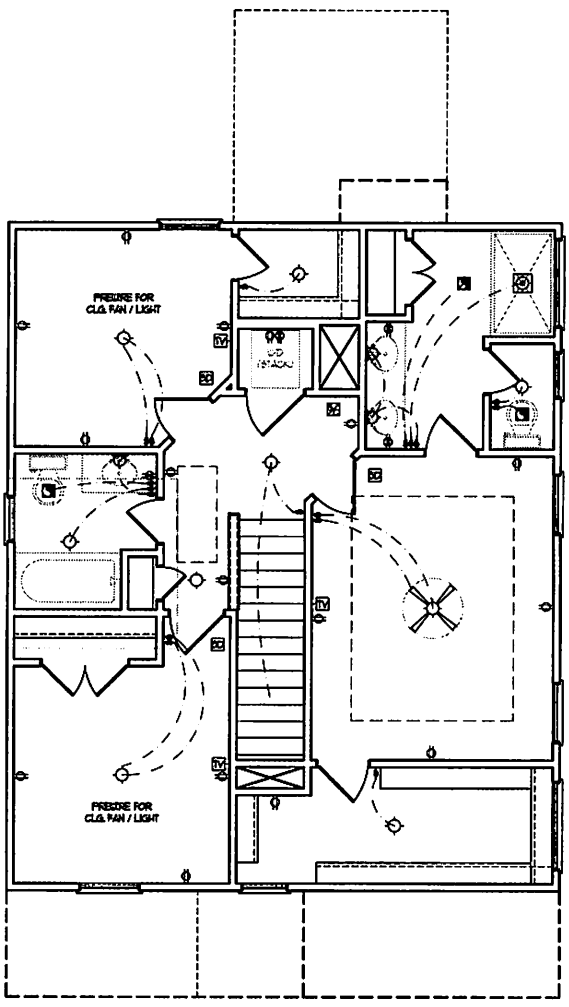
ELECTRICAL LAYOUT NOTES:

- 1) BLOCK AND WIRE FOR ALL CEILING FANS PER PLAN
- 2) VANTY LIGHTS TO BE SET @ 90" AFF. (TYP)
- 3) ADDITIONAL EXTERIOR OUTLETS REQUIRED BY CODE TO BE LOCATED BY ELECTRICAL
- 4) PLACE SWITCHES 6" FROM ROUGH OPENINGS

ELECTRICAL LEGEND

- ⊕ 120 V OUTLET
- ⊕ 120 V GFI OUTLET
- ⊕ 120 V SWITCHED OUTLET
- ⊕ 120 V BASEBOARD OUTLET
- ⊕ 4-FLEX
- ⊕ COUNTER OR FLOOR MOUNTED
- ⊕ COUNTER OR FLOOR MOUNTED NOY GFI
- ⊕ DEAD-ENPROOF
- ⊕ 220 V OUTLET
- ⊕ 120 V DEDICATED CIRCUIT
- ⊕ 220 V DEDICATED CIRCUIT
- ⊕ SPECIAL PURPOSE (240 V, ETC.)
- ⊕ BALL MOUNT LIGHT
- ⊕ CEILING MOUNT LIGHT
- ⊕ PENDANT LIGHT
- ⊕ RECESSED CAN LIGHT
- ⊕ MINI CAN LIGHT
- ⊕ EYEBALL LIGHT
- ⊕ FLUORESCENT LIGHT
- ⊕ UNDERCABINET LIGHT
- ⊕ FLOOD LIGHT
- ⊕ SWITCH
- ⊕ DIMMER SWITCH
- ⊕ TELEPHONE
- ⊕ DATA
- ⊕ TELEPHONE AND DATA
- ⊕ TV CONNECTION
- ⊕ TV/ DATA
- ⊕ CONDUIT FOR COMPONENT BRING
- ⊕ SPEAKER
- ⊕ 120 V SMOKE/ CO DETECTOR
- ⊕ 120 V SMOKE DETECTOR
- ⊕ EXHAUST FAN
- ⊕ LOW VOLTAGE PANEL
- ⊕ ALARM PANEL

- ⊕ CEILING FAN
- ⊕ CEILING FAN W/ LIGHT



RENAISSANCE
RESIDENTIAL DESIGN, INC.
RALEIGH, NC 27612
(919) 848-4128
WWW.RRDCAROLINA.COM

The art of transforming your needs into plans.
RENAISSANCE RESIDENTIAL DESIGN, INC. RESERVES THE RIGHT TO MAKE NEAR OR EQUAL TO THE ORIGINAL WORK. THESE LAYOUTS ARE FOR THE PURPOSE OF CONVEYING AN ARCHITECTURAL CONCEPT ONLY.
RENAISSANCE RESIDENTIAL DESIGN, INC. RESERVES THE RIGHT TO MAKE NEAR OR EQUAL TO THE ORIGINAL WORK. THESE LAYOUTS ARE FOR THE PURPOSE OF CONVEYING AN ARCHITECTURAL CONCEPT ONLY.

WEAVER
HOMES
3500 W. MARKET DRIVE - FAYETTEVILLE, NC 28404
910.486.2410 • 910.486.2410
www.weaverhomedesign.com

PLEASE REFER TO ALL ELECTRICAL SYMBOLS, SPECIFICATIONS, AND NOTES ON THIS DRAWING. THE CONTRACTOR SHALL BE RESPONSIBLE FOR VERIFYING THE LOCATION AND DEPTH OF ALL UTILITIES PRIOR TO ANY EXCAVATION. THE CONTRACTOR SHALL BE RESPONSIBLE FOR OBTAINING ALL NECESSARY PERMITS AND APPROVALS FROM THE LOCAL AUTHORITIES. THE CONTRACTOR SHALL BE RESPONSIBLE FOR OBTAINING ALL NECESSARY PERMITS AND APPROVALS FROM THE LOCAL AUTHORITIES.

WEAVER HOMES
CAROLINA COLLECTION
MAGNOLIA

DATE: JUNE 30, 2020
REV: _____
SCALE: 1/4" = 1'-0"
DRAWN BY: WJO
ENGINEERED BY: _____
REVIEWED BY: _____

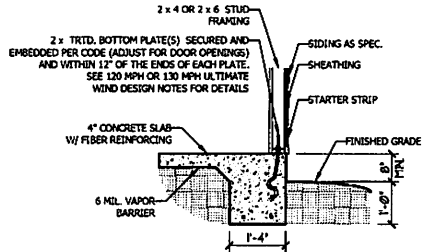
SECOND FLOOR
ELECTRICAL
PLAN

E-2

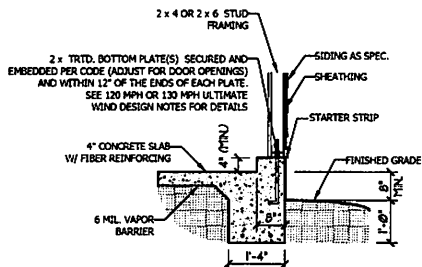
SCALE NOTE: 18x24 PRINTS ARE TO SCALE AS NOTED.
11x17 PRINTS ARE NOT TO SCALE

ULTIMATE DESIGN WIND SPEED NOTES FOR LESS THAN 30' MEAN ROOF HEIGHT:

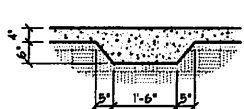
- STRUCTURAL DESIGN PER NORTH CAROLINA RESIDENTIAL CODE, 2018 EDITION.
- FOR 120 MPH WIND ZONES INSTALL 1/2" ANCHOR BOLTS 6" O.C. AND WITHIN 1'-0" FROM END OF EACH CORNER. ANCHOR BOLTS MUST EXTEND A MINIMUM OF 7" INTO CONCRETE OR 15" INTO MASONRY. LOCATE BOLT WITHIN MIDDLE THIRD OF PLATE WIDTH.
- FOR 130 MPH WIND ZONES INSTALL 1/2" ANCHOR BOLTS 4'-0" O.C. AND WITHIN 1'-0" FROM END OF EACH CORNER. ANCHOR BOLTS MUST EXTEND A MINIMUM OF 7" INTO CONCRETE OR 15" INTO MASONRY. LOCATE BOLT WITHIN MIDDLE THIRD OF PLATE WIDTH.
- MEAN ROOF HEIGHT IS LESS THAN 30 FEET.
- EXTERIOR WALLS DESIGNED FOR 120 OR 130 MPH WINDS.
- INSTALL 7/16" OSB SHEATHING ON ALL EXTERIOR WALLS OF ALL STORIES IN ACCORDANCE WITH SECTION R602.10.3 OF THE NRC, 2018 EDITION.
- ENERGY EFFICIENCY COMPLIANCE AND INSULATION VALUES OF THE BUILDING TO BE IN ACCORDANCE WITH CHAPTER 11 OF THE NRC, 2018 EDITION.



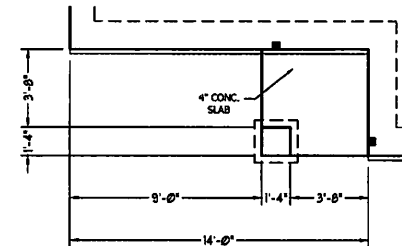
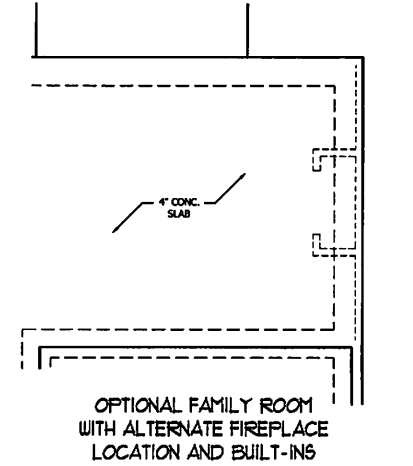
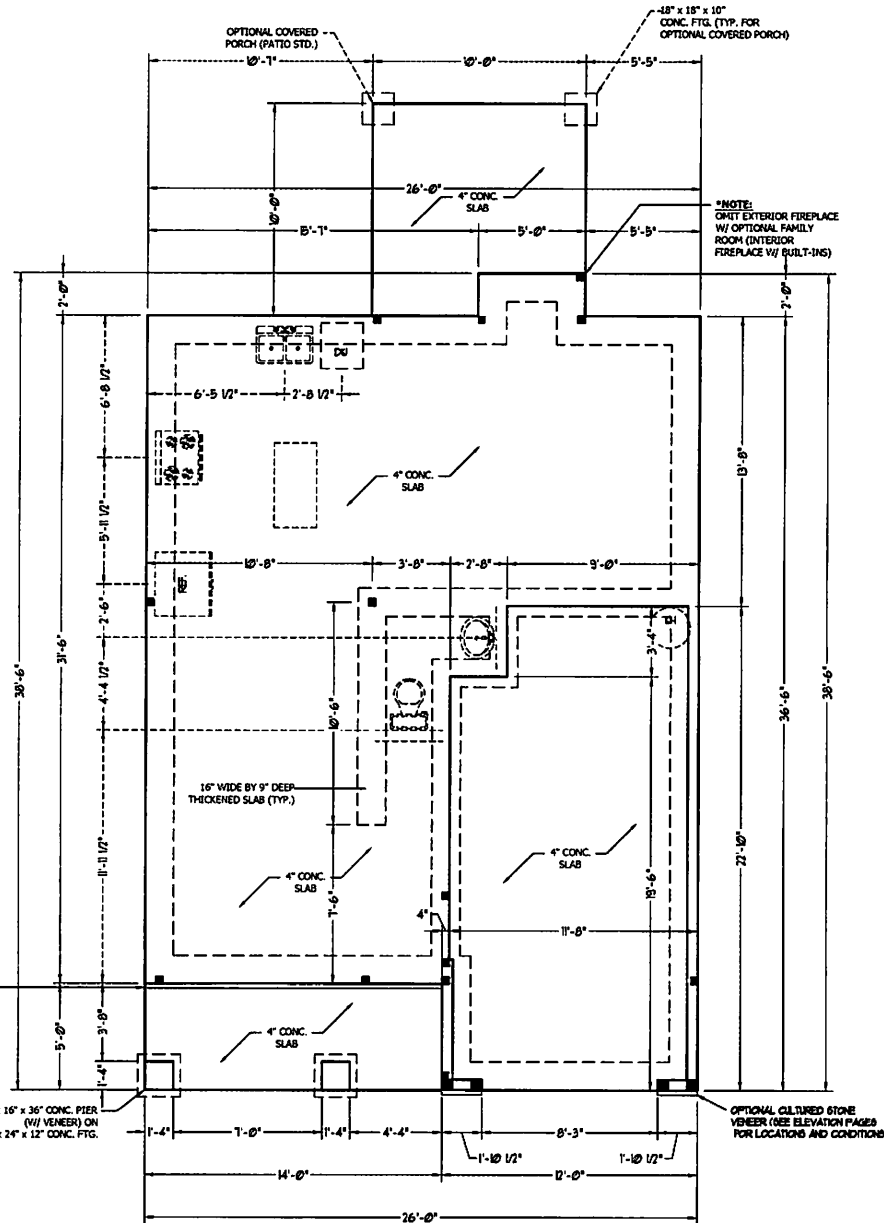
TYPICAL SLAB DETAIL



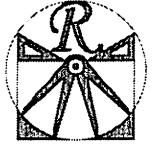
GARAGE CURB DETAIL



THICKENED SLAB DETAIL



FRONT PORCH ELEVATION B



RENAISSANCE
RESIDENTIAL DESIGN, INC.
RALEIGH, NC 27612
(919) 849-4128
WWW.RENDESIGN.COM

The art of redefining your residential space.

RENAISSANCE RESIDENTIAL DESIGN, INC. HEREBY EXPRESSLY DISCLAIMS ANY AND ALL LIABILITY FOR THE ACCURACY OF THE INFORMATION CONTAINED HEREIN. THE INFORMATION CONTAINED HEREIN IS PROVIDED AS IS WITHOUT WARRANTY OF ANY KIND. THE USER ASSUMES ALL LIABILITY FOR THE USE OF THE INFORMATION CONTAINED HEREIN. THE INFORMATION CONTAINED HEREIN IS NOT TO BE REPRODUCED OR TRANSMITTED IN ANY FORM OR BY ANY MEANS, ELECTRONIC OR MECHANICAL, INCLUDING PHOTOCOPYING, RECORDING, OR BY ANY INFORMATION STORAGE AND RETRIEVAL SYSTEM, WITHOUT THE WRITTEN CONSENT OF RENDESIGN, INC. RENDESIGN, INC. IS NOT RESPONSIBLE FOR ANY DAMAGES, INCLUDING CONSEQUENTIAL DAMAGES, ARISING FROM THE USE OF THE INFORMATION CONTAINED HEREIN.

WEAVER
HOMES
800.537.2410 • Raleigh, NC • 27612
www.weaverhomes.com

WEAVER HOMES
CAROLINA COLLECTION
MAGNOLIA

DATE: JUNE 30, 2020

REV:

SCALE: 1/4" = 1'-0"

DRAWN BY: WFO

ENGINEERED BY:

REVIEWED BY:

MONO SLAB
FOUNDATION
PLAN

S-1

SCALE NOTE: 18x24 PRINTS ARE TO SCALE AS NOTED.
11x17 PRINTS ARE NOT TO SCALE

STRUCTURAL NOTES:

1. ALL FRAMING LUMBER TO BE SPF #2 (LNO). ALL TREATED LUMBER TO BE SYP #2 (LNO).
2. ALL LOAD BEARING HEADERS TO BE (2) 2 x 6 (LNO).
3. INSTALL AN EXTRA JOIST UNDER WALLS PARALLEL TO FLOOR JOISTS.
4. WINDOW AND DOOR HEADERS TO BE SUPPORTED W/ (1) JACK STUD AND (1) KING STUD EA. END (LNO.). SEE TABLE R602.7.5 FOR ADDITIONAL KING STUD REQUIREMENTS.
5. SQUARES DENOTE POINT LOADS WHICH REQUIRE SOLID BLOCKING TO GIRDER OR FOUNDATION. ALL SQUARES TO BE (2) STUDS (LNO.).
6. ALL 4 x 4 POSTS SHALL BE ANCHORED TO SLABS W/ SIMPSON ABU44 POST BASES (OR EQUAL) AND 6 x 6 POSTS W/ ABUS6 POST BASES (OR EQUAL) (LNO.). ALL 4 x 4 AND 6 x 6 POSTS TO BE INSTALLED WITH 700 LB CAPACITY UPLIFT CONNECTORS AT TOP (LNO.).
7. FOR FIBERGLASS, ALUMINUM, OR COLUMN ENCL. BY OTHERS, SECURE TO SLAB W/ (2) METAL ANGLES USING 2" CONC. SCREWS. FASTEN ANGLES TO COLUMNS W/ 1/4" THROUGH BOLTS W/ NUTS AND WASHERS. LOCATE ANGLES ON OPPOSITE SIDES OF COLUMN. THROUGH BOLTS MUST BE INSTALLED PRIOR TO SETTING COLUMN.

BRACE WALL PANEL NOTES:

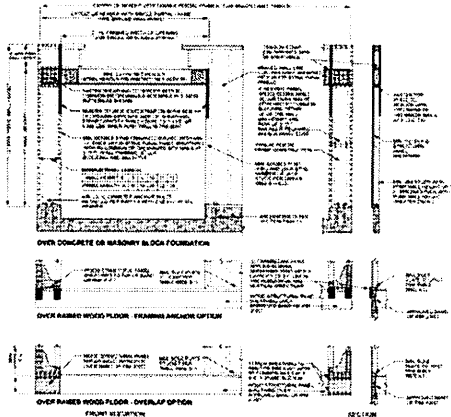
EXTERIOR WALLS: ALL EXTERIOR WALLS TO BE SHEATHED WITH CS-VSP OR CS-SFB IN ACCORDANCE WITH SECTION R602.10.3 UNLESS NOTED OTHERWISE.

REQUIRED LENGTH OF BRACING: REQUIRED BRACE WALL LENGTH FOR EACH SIDE OF THE CIRCUMSCRIBED RECTANGLE ARE INTERPOLATED PER TABLE R602.10.3. METHODS CS-VSP AND CS-SFB CONTRIBUTE THEIR ACTUAL LENGTH. METHOD GS CONTRIBUTES 0.5 ITS ACTUAL LENGTH. METHOD PF CONTRIBUTES 1.5 TIMES ITS ACTUAL LENGTH.

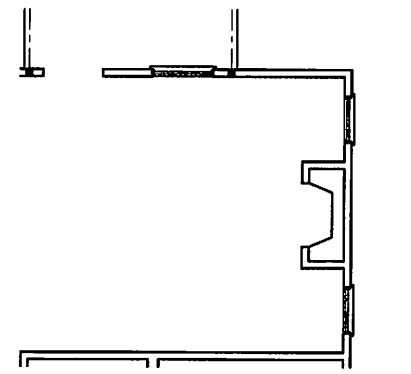
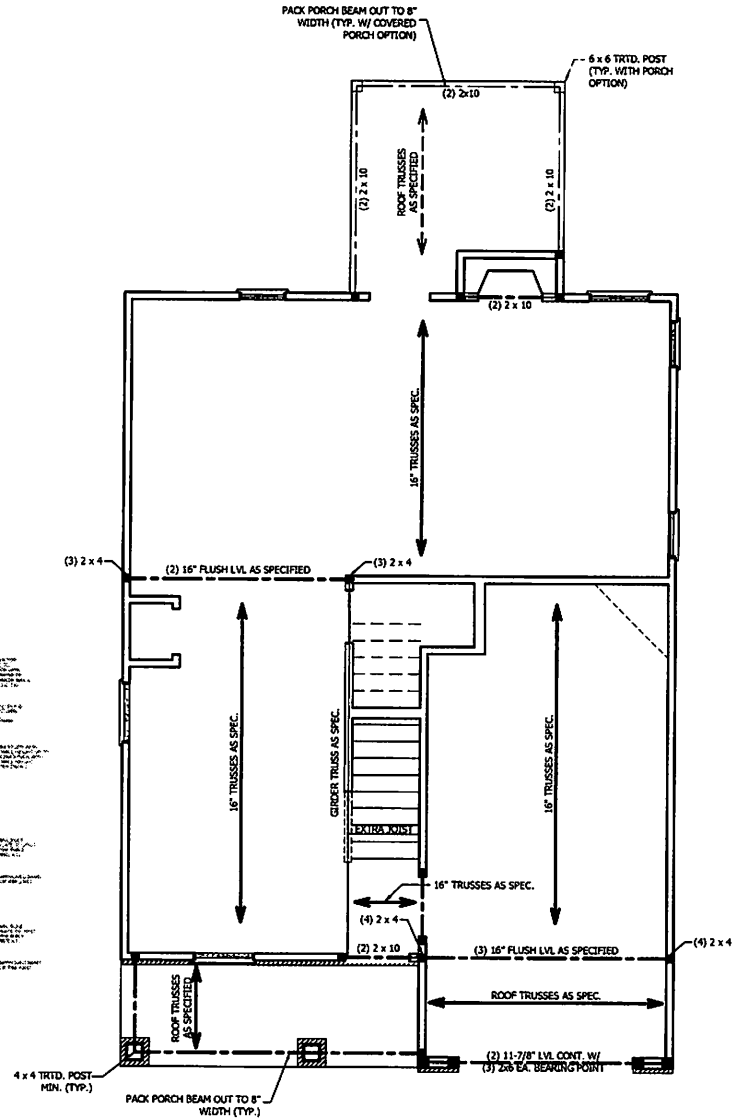
GYPSUM: ALL INTERIOR SIDES OF EXTERIOR WALLS AND BOTH SIDES OF INTERIOR WALLS TO HAVE 1/2" GYPSUM INSTALLED. WHEN NOT USING METHOD GS GYPSUM TO BE FASTENED PER TABLE R602.3.5. METHOD GS TO BE FASTENED PER TABLE R602.10.1.

HD: 800 LBS HOLD DOWN DEVICE FASTENED TO THE EDGE OF THE BRACE WALL PANEL NEAREST TO THE CORNER.

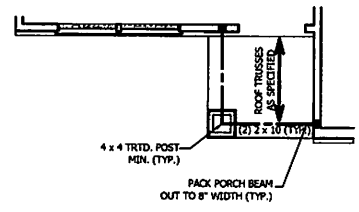
METHODS: PER TABLE R602.10.1



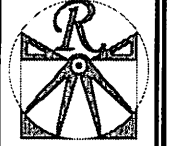
**FIGURE R602.10.1
METHOD PF - PORTAL FRAME CONSTRUCTION**



OPTIONAL FAMILY ROOM WITH ALTERNATE FIREPLACE LOCATION AND BUILT-INS



FRONT PORCH AND DINING ROOM WINDOW ELEVATION B



RENAISSANCE
RESIDENTIAL DESIGN, INC.
RALEIGH, NC 27612
(919) 643-4128
WWW.RDCA.ROLINA.COM

RE RENAISSANCE RESIDENTIAL DESIGN, INC. RECEIVES THE RIGHT TO MAKE MODIFICATIONS TO THE ORIGINAL CONCEPTUAL AND FINAL ARCHITECTURAL DRAWINGS AND SPECIFICATIONS WITHOUT NOTICE. THESE DRAWINGS ARE FOR THE PURPOSE OF CONVEYING AN ARCHITECTURAL CONCEPT ONLY.

RE RENAISSANCE RESIDENTIAL DESIGN, INC. RECEIVES THE RIGHT TO MAKE MODIFICATIONS TO THE ORIGINAL CONCEPTUAL AND FINAL ARCHITECTURAL DRAWINGS AND SPECIFICATIONS WITHOUT NOTICE. THESE DRAWINGS ARE FOR THE PURPOSE OF CONVEYING AN ARCHITECTURAL CONCEPT ONLY.

**WEAVER
HOMES**
3145 W. MARKET STREET - FAYETTEVILLE, NC 28404
910.438.2400 • 910.438.2499
www.weaverhomes.com

PLEASE PRINT OR TYPED ALL INFORMATION. ALL INFORMATION IS SUBJECT TO CHANGE WITHOUT NOTICE. ALL INFORMATION IS SUBJECT TO CHANGE WITHOUT NOTICE. ALL INFORMATION IS SUBJECT TO CHANGE WITHOUT NOTICE. ALL INFORMATION IS SUBJECT TO CHANGE WITHOUT NOTICE.

**WEAVER HOMES
CAROLINA COLLECTION
MAGNOLIA**

DATE: JUNE 30, 2020
REV
SCALE: 1/4" = 1'-0"
DRAWN BY: WJ
ENGINEERED BY:
REVIEWED BY:

SECOND FLOOR FRAMING PLAN

S-2

SCALE NOTE: 18x24 PRINTS ARE TO SCALE AS NOTED.
11x17 PRINTS ARE NOT TO SCALE

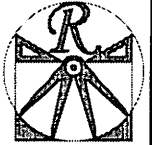
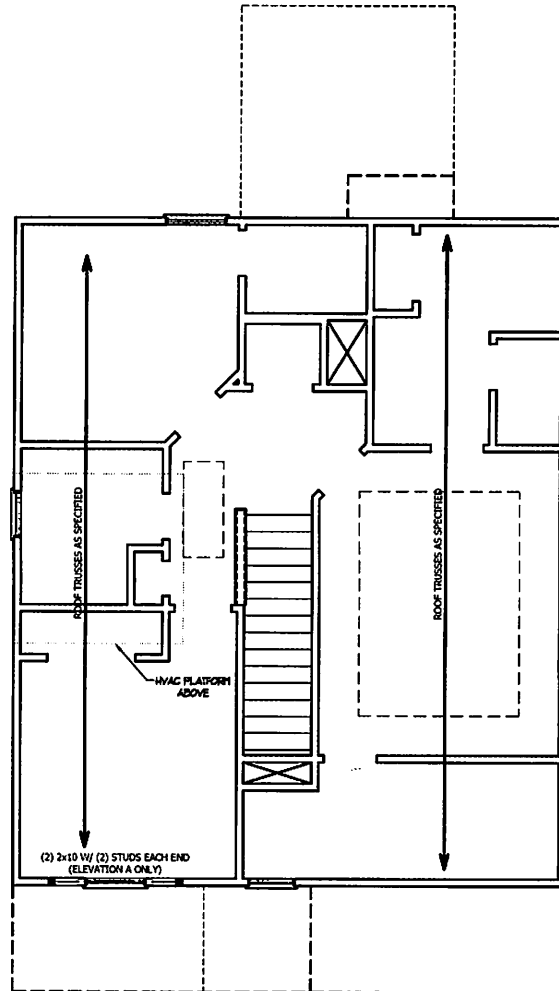
TABLE R602.7.5
MINIMUM NUMBER OF FULL HEIGHT STUDS
AT EACH END OF HEADERS IN EXTERIOR WALLS

HEADER SPAN (FEET)	MAXIMUM STUD SPACING (INCHES) (PER TABLE R602.3(5))	
	16	24
UP TO 3'	1	1
4'	2	1
8'	3	2
12'	5	3
16'	6	4

STRUCTURAL NOTES:

1. ALL FRAMING LUMBER TO BE SPF #2 (UNO). ALL TREATED LUMBER TO BE SYP #2 (UNO.)
2. ALL LOAD BEARING HEADERS TO BE (2) 2 x 6 (UNO).
3. WINDOW AND DOOR HEADERS TO BE SUPPORTED w/ (1) JACK STUD AND (1) KING STUD EA. END (UNO.). SEE TABLE R602.7.5 FOR ADDITIONAL KING STUD REQUIREMENTS.
4. SQUARES DENOTE POINT LOADS WHICH REQUIRE SOLID BLOCKING TO GIRDER OR FOUNDATION. ALL SQUARES TO BE (2) STUDS (UNO.)

DSP - DOUBLE STUD POCKET
TSP - TRIPLE STUD POCKET



RENAISSANCE
RESIDENTIAL DESIGN, INC.
RALEIGH, NC 27612
(919) 847-4128
WWW.RRDCAROLINA.COM

The art of transforming your vision into reality.
RENAISSANCE RESIDENTIAL DESIGN, INC. HAS OVER 20 YEARS OF DESIGN EXPERIENCE IN THE RESIDENTIAL ARCHITECTURE INDUSTRY. OUR DESIGNERS AND ARCHITECTS ARE PASSIONATE ABOUT CREATING BEAUTIFUL HOMES THAT REFLECT OUR CLIENTS' LIFESTYLES AND VISIONS. WE ARE COMMITTED TO EXCELLENCE IN EVERY ASPECT OF OUR BUSINESS, FROM CONCEPT TO COMPLETION. CONTACT US TODAY TO DISCUSS YOUR PROJECT AND SEE HOW WE CAN HELP YOU REALIZE YOUR DREAMS.

WEAVER
HOMES
318 Weaver Drive, Cary, NC 27513
www.weaverhomes.com

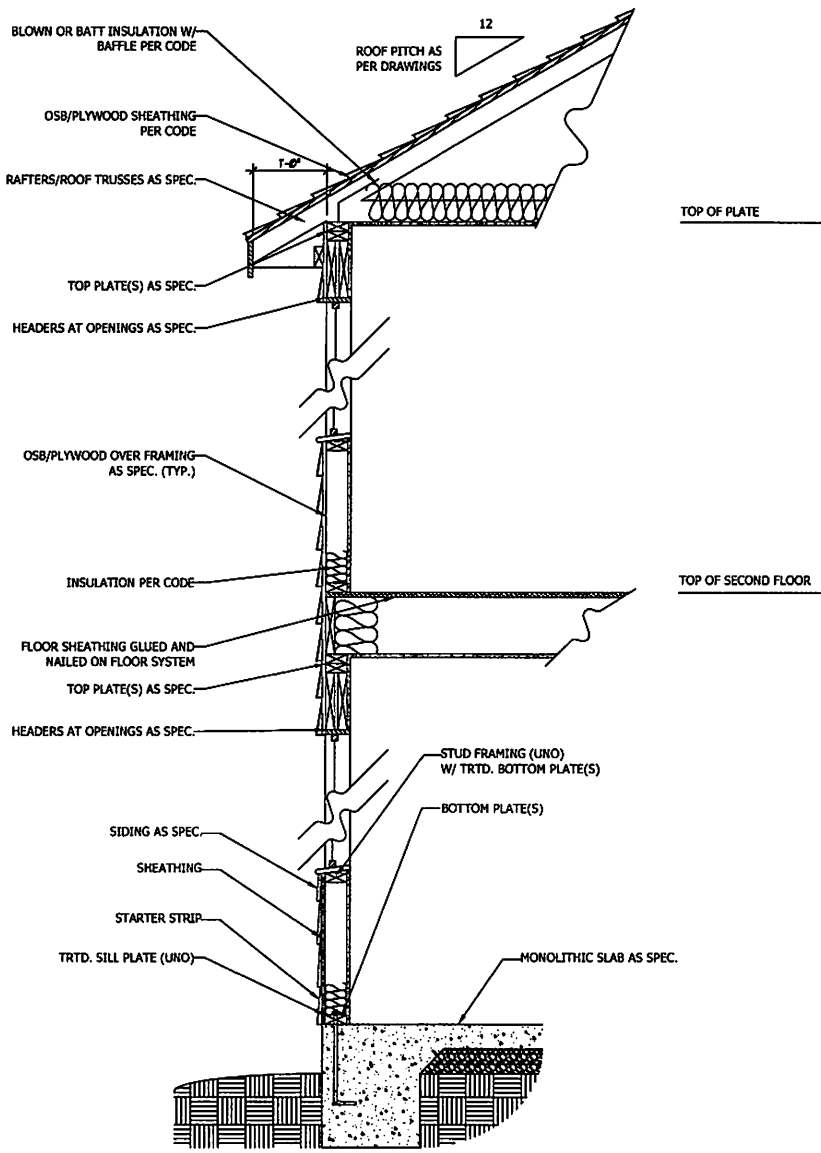
PER THE ARCHITECTURAL AND ENGINEERING PROFESSIONAL SEAL, THIS DOCUMENT IS THE PROPERTY OF RENAISSANCE RESIDENTIAL DESIGN, INC. AND IS NOT TO BE REPRODUCED OR TRANSMITTED IN ANY FORM OR BY ANY MEANS, ELECTRONIC OR MECHANICAL, INCLUDING PHOTOCOPYING, RECORDING, OR BY ANY INFORMATION STORAGE AND RETRIEVAL SYSTEM, WITHOUT THE WRITTEN PERMISSION OF RENAISSANCE RESIDENTIAL DESIGN, INC. ANY UNAUTHORIZED REPRODUCTION OR TRANSMISSION IS STRICTLY PROHIBITED AND WILL BE PROSECUTED TO THE FULL EXTENT OF THE LAW.

WEAVER HOMES
CAROLINA COLLECTION
MAGNOLIA

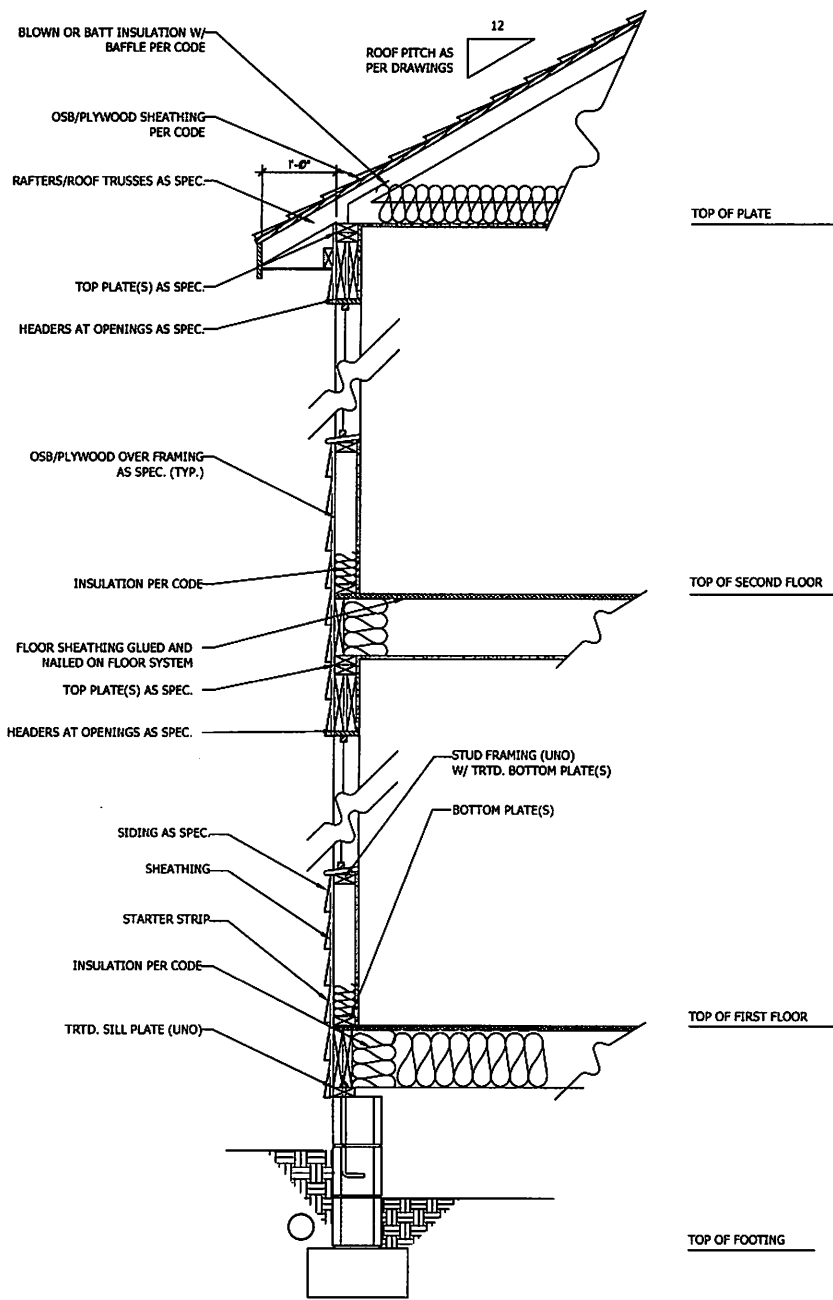
DATE: 11/18/2020
REV: _____
SCALE: 1/8" = 1'-0"
DRAWN BY: WJ
ENGINEERED BY: _____
REVIEWED BY: _____

ATTIC FLOOR
FRAMING PLAN

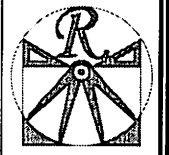
SCALE NOTE: 18x24 PRINTS ARE TO SCALE AS NOTED.
11x17 PRINTS ARE NOT TO SCALE



WALL SECTION W/ SLAB
W/ STD. SIDING SHOWN (NTS)



WALL SECTION W/ CRAWL SPACE
W/ STD. SIDING SHOWN (NTS)



RENAISSANCE
RESIDENTIAL DESIGN, INC.
RALEIGH, NC 27612
(919) 849-8128
WWW.RHDCA.ORG/RA.DESIGN.COM

THE ART OF REIMAGINING YOUR VISION INTO REALITY
RENAISSANCE RESIDENTIAL DESIGN, INC. IS AN ARCHITECTURAL FIRM THAT PROVIDES ARCHITECTURAL SERVICES TO HOMEOWNERS, CONTRACTORS, AND COMMERCIAL CLIENTS. WE ARE A FULL SERVICE ARCHITECTURAL FIRM THAT PROVIDES ARCHITECTURAL SERVICES FROM CONCEPT TO CONSTRUCTION. WE ARE A FULL SERVICE ARCHITECTURAL FIRM THAT PROVIDES ARCHITECTURAL SERVICES FROM CONCEPT TO CONSTRUCTION. WE ARE A FULL SERVICE ARCHITECTURAL FIRM THAT PROVIDES ARCHITECTURAL SERVICES FROM CONCEPT TO CONSTRUCTION.

WEAVER
HOMES
SINCE 1988
3505 WEAVER DRIVE, SUITE 100
RALEIGH, NC 27612
WWW.WEAVERHOMES.COM

WEAVER HOMES IS AN EQUAL OPPORTUNITY AFFIRMATIVE ACTION EMPLOYER. WE ARE COMMITTED TO DIVERSITY AND INCLUSION IN OUR WORKPLACE. WE ARE COMMITTED TO PROVIDING A SAFE AND HEALTHY WORKING ENVIRONMENT FOR ALL OF OUR EMPLOYEES. WE ARE COMMITTED TO PROVIDING A SAFE AND HEALTHY WORKING ENVIRONMENT FOR ALL OF OUR EMPLOYEES.

WEAVER HOMES
CAROLINA COLLECTION
MAGNOLIA

DATE: 08.12.2020
REV: _____
SCALE: 1/4" = 1'-0"
DRAWN BY: WJO
ENGINEERED BY: _____
REVIEWED BY: _____
TYPICAL WALL SECTIONS