

VICINITY MAP (NTS)

SUMMERFIELD S/D  
 PHASE 2  
 M.B.2001, PG.315

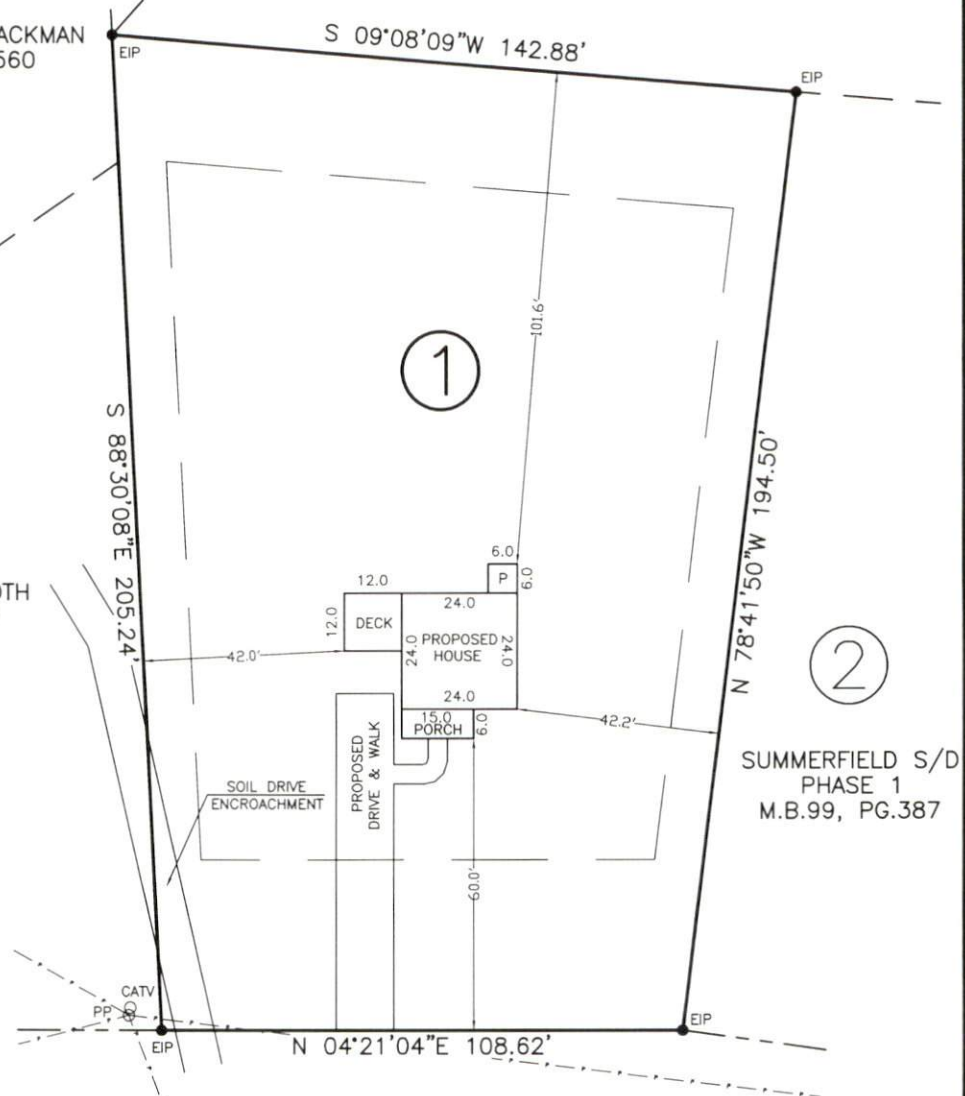


- LEGEND**
- NTS NOT TO SCALE
  - EIP EXISTING IRON PIPE
  - PP POWER POLE
  - W/M WATER METER
  - TB TELEPHONE BOX
  - IPS IRON PIPE SET
  - CP&L TRANSFORMER
  - CATV CABLE TV BOX
  - L POLE LIGHT POLE
  - OVERHEAD UTILITY LINE
  - F.E.S. FLARED END SECTION (PIPE)
  - RCP REINFORCED CONC. PIPE
  - B.O.C. BACK OF CURB
  - F.H. FIRE HYDRANT
  - C/O SEWER CLEAN OUT
  - EIS EXISTING IRON STAKE
  - M.H. MANHOLE
  - ECM EXISTING CONCRETE MONUMENT
  - P.K. PARKER KALON NAIL

ERNESDEEN W. BLACKMAN  
 D.B.1096, PG.560

VICKIE KAY FAIRCLOTH  
 D.B.1605, PG.98

PLAT NORTH  
 (REF: M.B.99, PG.387)

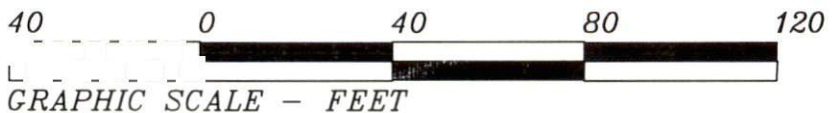


SUMMERFIELD S/D  
 PHASE 1  
 M.B.99, PG.387

**CHIC ENNIS ROAD**  
 (60' PUBLIC R/W)

NOTE: ALL INTERIOR LOT SHALL HAVE A 20' EASEMENT, 10' EACH SIDE OF ALL LOT LINES. A 10' DRAINAGE AND UTILITY EASEMENT SHALL LIE INSIDE ALL EXTERIOR BOUNDARY LINES. A 10' WIDE GRADING, SLOPE, DRAINAGE AND UTILITY EASEMENT IS RESERVED ON THE LOT SIDE OF AND ADJACENT TO ALL STREET RIGHT-OF-WAYS.

NOTE: SHOWN IS LOT 1 OF  
 SUMMERFIELD S/D - PHASE 1  
 REF: M.B.99, PG.387



AREA = 0.574 ACRES  
 66 CHIC ENNIS ROAD