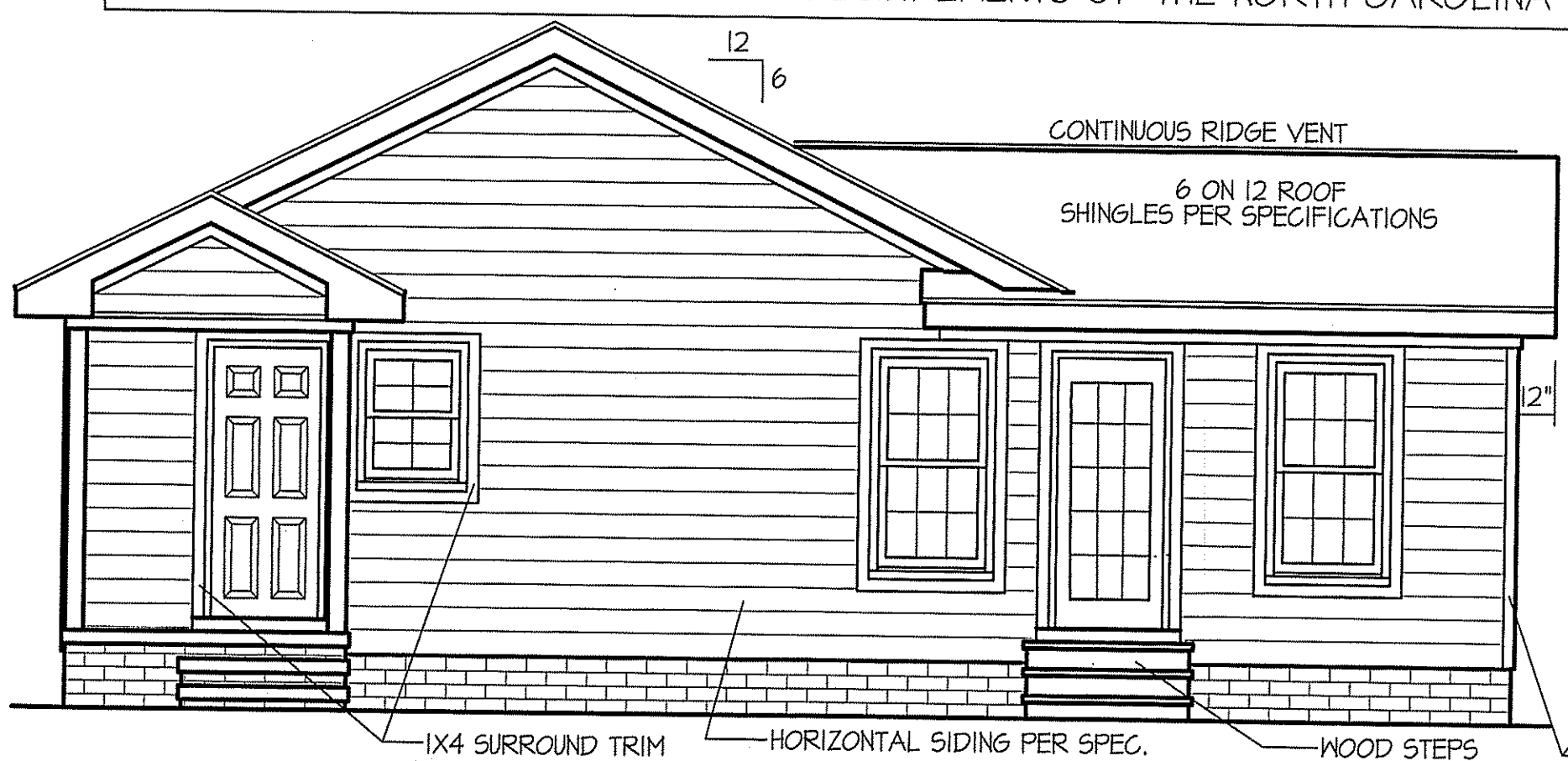
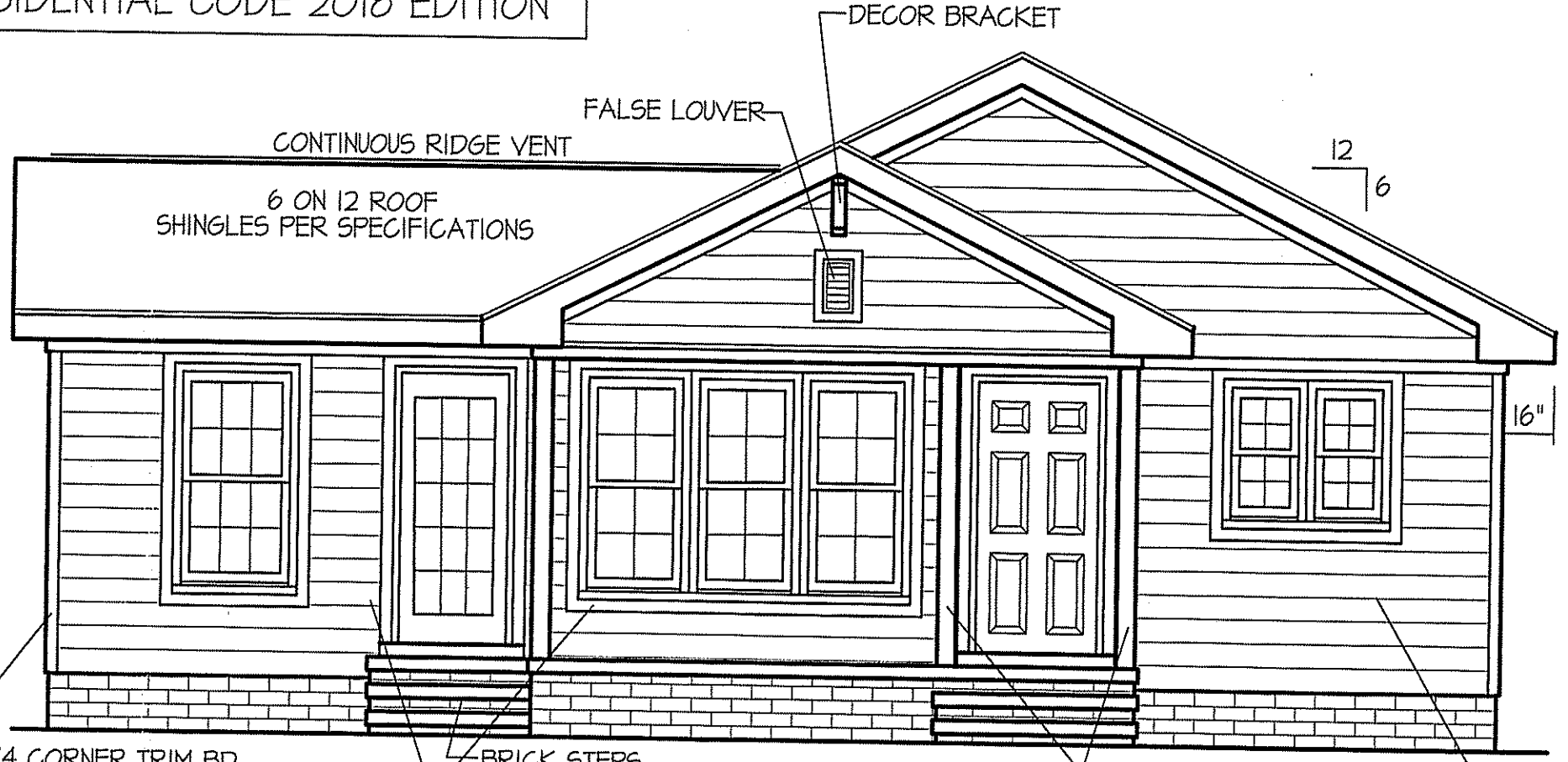


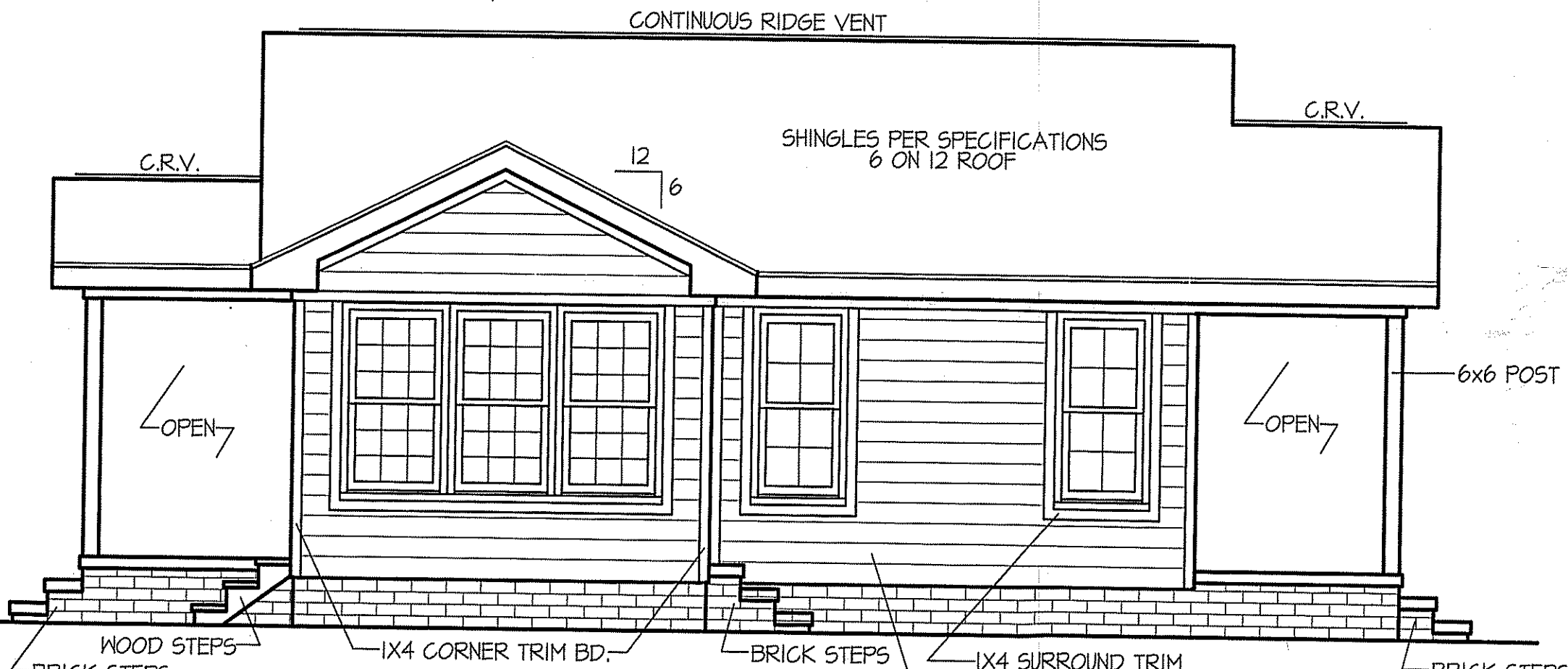
THIS PLAN IS DESIGNED TO MEET THE REQUIREMENTS OF THE NORTH CAROLINA RESIDENTIAL CODE 2018 EDITION



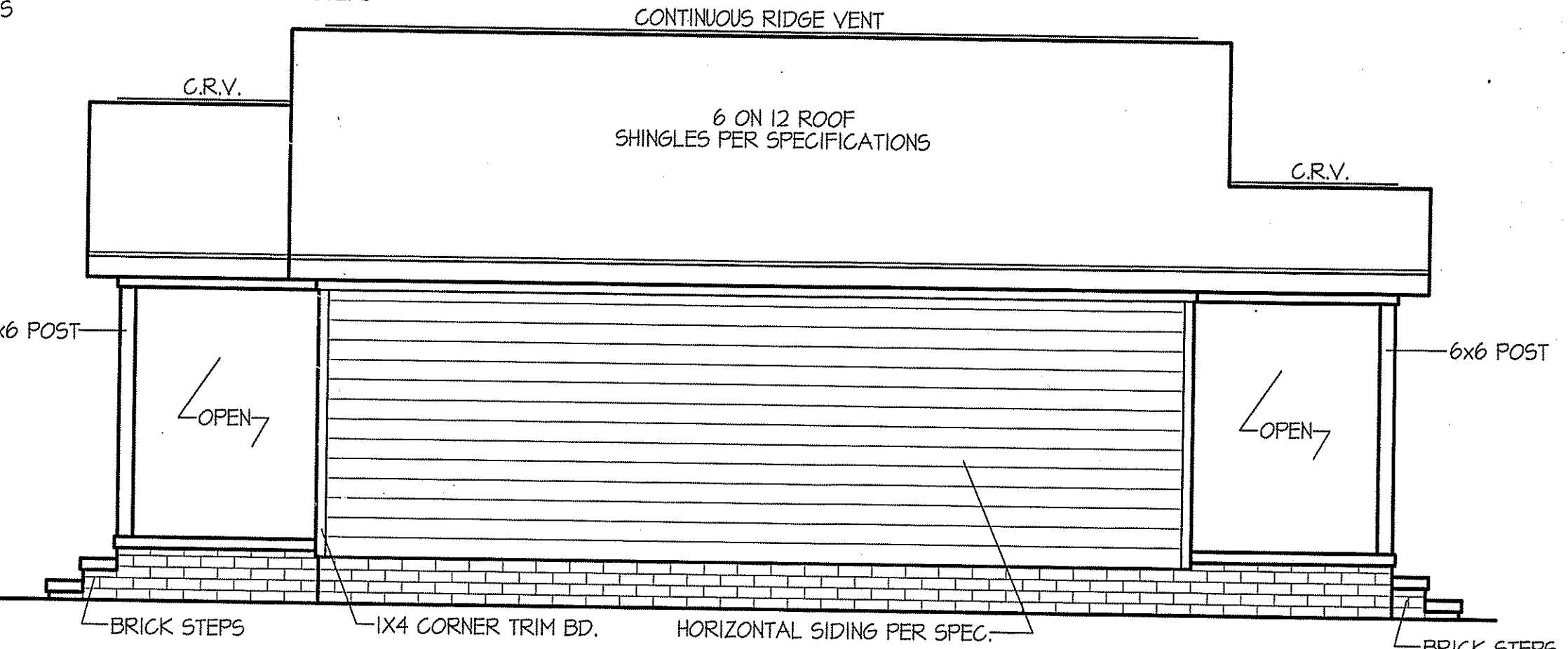
REAR ELEVATION
SCALE: 1/4" = 1'-0"



FRONT ELEVATION
SCALE: 1/4" = 1'-0"



LEFT ELEVATION
SCALE: 1/4" = 1'-0"



RIGHT ELEVATION
SCALE: 1/4" = 1'-0"

ROOF VENTILATION REQ'MTS.
900 ATTIC SQ. FT. / 300 = 3.00
PROVIDED ON PLAN
51 L.F. RIDGE VENT = 9.56
90 L.F. SOFFIT VENT = 5.62
TOTAL = 15.18 S.F. FREE NET AREA

INSULATION and FENESTRATION REQUIREMENTS		
CLIMATE ZONE	ZONE-3	ZONE-4
FENESTRATION U-FACTOR	0.35	0.35
GLAZED FENESTRATION SHGC	0.30	0.30
MINIMUM CEILING R-VALUE	R-30	R-30
MINIMUM WALL R-VALUE	R-15, 13+2.5	R-15, 13+2.5
MINIMUM FLOOR R-VALUE	R-19	R-19
MIN. CRAWL SPACE WALL R-VALUE	5/13	10/15
MIN. SLAB R-VALUE	0	R-10

PROVIDE STEPS AS REQUIRED
GRADE MAY VARY - BUILDER TO VERIFY

siding cypress 5" dutchlap
all trim white no shutters

WIND ZONES (PER TABLE R301.2(4))	
COUNTY	MPH
HARNETT	120
JOHNSTON	120
SAMPSON	130
WAKE	115

ALL EXTERIOR WALLS TO BE SHEATHED WITH CS-WSP (7/16" OSB) IN ACCORDANCE WITH SECTION R602.10.3 UNLESS OTHERWISE NOTED.

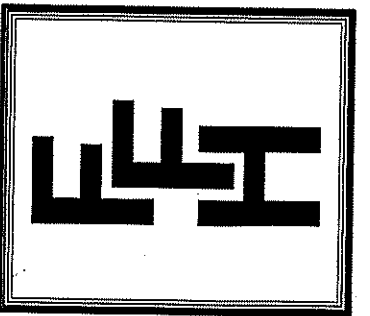
NOTICE TO CONTRACTOR
All construction must comply with current NC Building Codes and is subject to field inspection and verification.

APPROVED
Limited building only review
Permit holder responsible for full compliance with the code.

03/15/2021

DATE:
FEB. 22, 2021

FREEDOM FAMILY HOMES
P.O. BOX 608
DUNN, N.C. - 28335
0: (910) 892-1231 FAX: (910) 892-5680
©2021, FREEDOM FAMILY HOMES



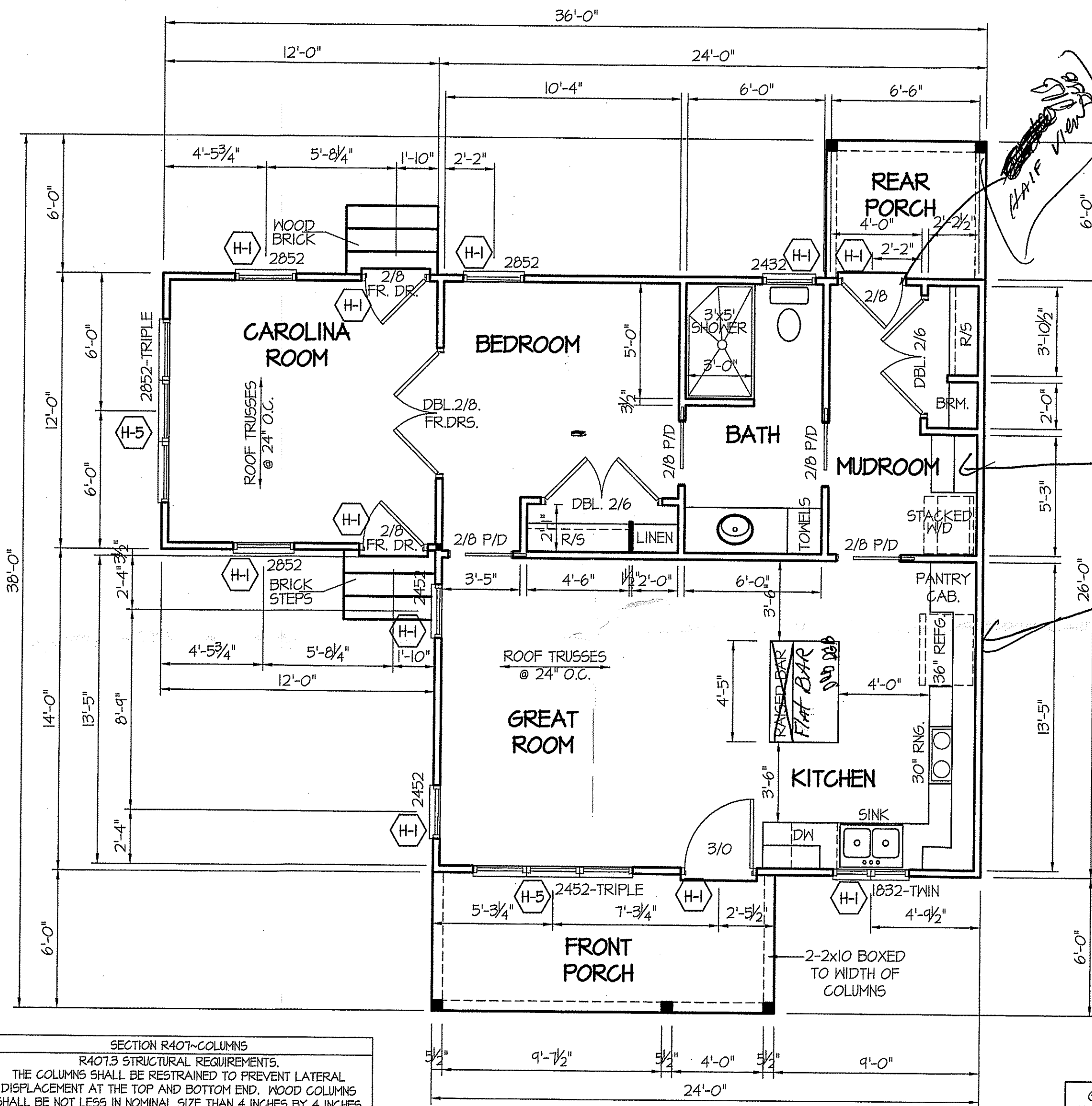
EXCLUSIVE PLAN FOR
FREEDOM FAMILY HOMES
BREWSTER

PLAN:

SHEET NO.
1

FILE: FFH - BREWSTER-FEB.-2021

SEE NOTES ON PLAN



WIND ZONES (PER TABLE R301.2(4))

COUNTY	MPH
HARNETT	120
JOHNSTON	120
SAMPSON	130
WAKE	115

HEADER SCHEDULE

SYMBOL #	SIZE	JACKS
H-1	(2) 2x10	1
H-2	(2) 2x10	2
H-3	(2) 2x8	2
H-4	(2) 2x12	2
H-5	(2) 1.75 x 9.25 LVL	3

ALL INTERIOR AND EXTERIOR LOAD BEARING HEADERS WILL BE 2x10 #2 SPF UNLESS OTHERWISE NOTED.

Hot water H-1e under House 2nd choice is Laundry Room.

HVAC Unit.

TABLE R602.7.5
MINIMUM NUMBER OF FULL HEIGHT STUDS AT EACH END OF HEADERS IN EXTERIOR WALLS

HEADER SPAN (feet)	MAX. STUD SPACING (inches) [per Table R602.3(5)]	
	16	24
< 3'	1	1
4'	2	1
8'	3	2
12'	5	3
16'	6	4

SECTION R401-COLUMNS
R401.3 STRUCTURAL REQUIREMENTS.
THE COLUMNS SHALL BE RESTRAINED TO PREVENT LATERAL DISPLACEMENT AT THE TOP AND BOTTOM END. WOOD COLUMNS SHALL BE NOT LESS IN NOMINAL SIZE THAN 4 INCHES BY 4 INCHES (102 mm BY 102 mm). STEEL COLUMNS SHALL BE NOT LESS THAN 3-INCH-DIAMETER (76 mm) SCHEDULE 40 PIPE MANUFACTURED IN ACCORDANCE WITH ASTM A53 GRADE B OR APPROVED EQUIVALENT.

SQUARE FOOTAGES
HEATED FRAME = 768 S.F.
FRONT PORCH = 90 S.F.
REAR PORCH = 42 S.F.

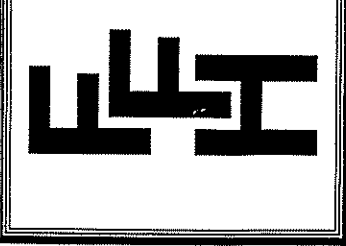
8' CEILINGS
DIMENSIONS FLOOR PLAN
SCALE: 1/4"=1'-0"

GIRDER AND HEADER SIZES AND JACK STUD REQUIREMENTS ON EXTERIOR AND INTERIOR LOAD BEARING WALLS ARE TO COINCIDE WITH TABLE EXT.-R602.7 (1) AND INT.-R602.7 (2).

DATE:

FEB. 22, 2021

FREEDOM FAMILY HOMES
P.O. BOX 608
DUNN, N.C. - 28335
O: (910) 892-1231 FAX: (910) 892-5680
© 2021, FREEDOM FAMILY HOMES

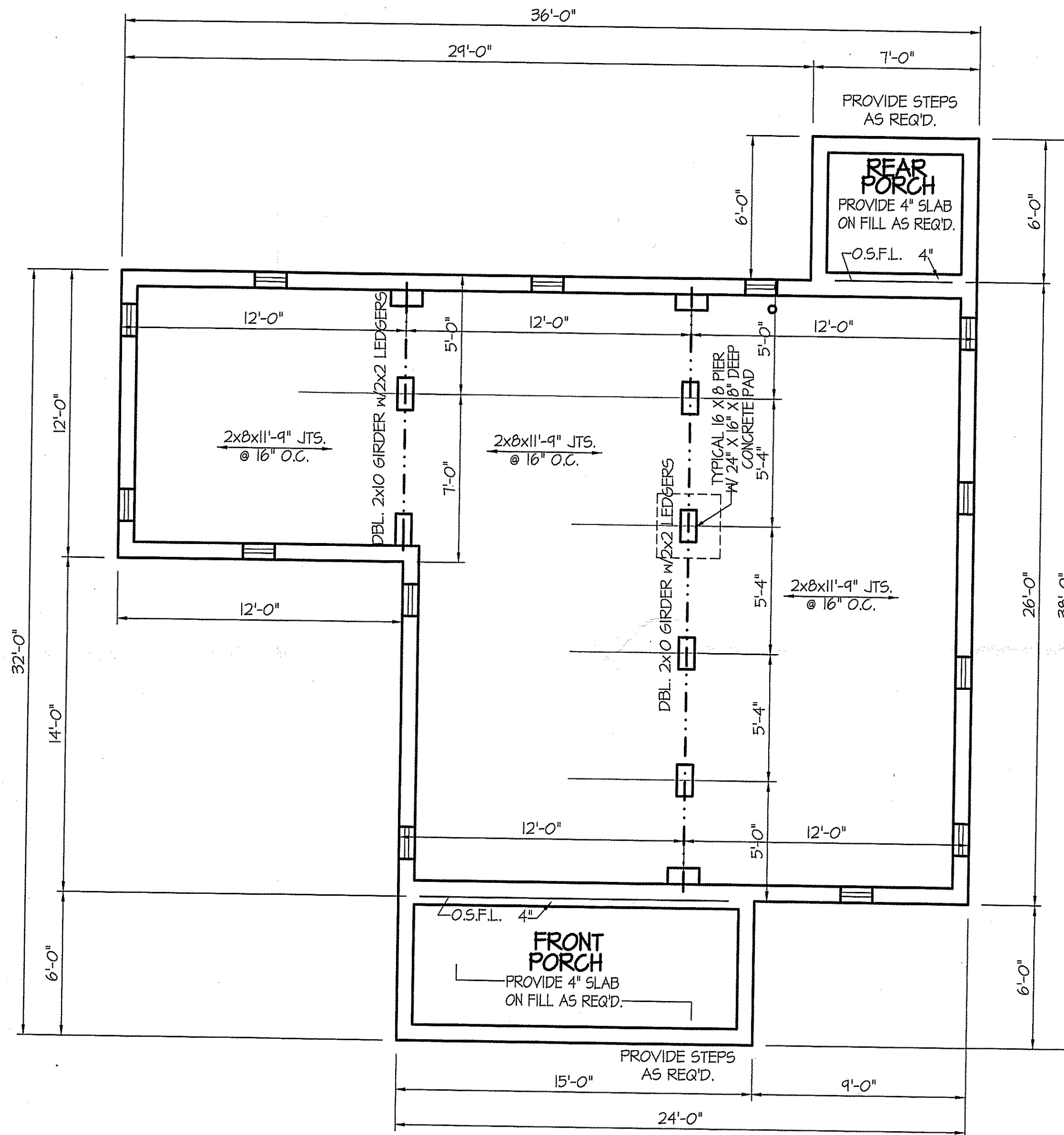


**EXCLUSIVE PLAN FOR
FREEDOM FAMILY HOMES**
BREWSTER

PLAN: *[Signature]*

SHEET NO.

2



ALL JOISTS AND GIRDERS WILL BE #2 S.Y.P.
 JOIST SPANS TO COINCIDE WITH REVISED TABLES
 R502.3.1(1) and R502.3.1(2) FROM 2018 NCR CODES
 GIRDER SPANS AND HEADER SPANS TO COINCIDE
 WITH TABLE R602.7(1), R602.7(2) AND R602.7(3).

BOX SILL

FOUNDATION PLAN

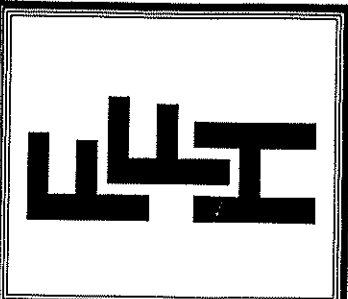
SCALE: 1/4"=1'-0"

NOTES:
 USE 2 X 6 MUD SILL W/ SGL. 2X8 BANDS ON 8" WALLS
 USE DBL. 2X10 GIRDERS W/ 2X2 LEDGERS
 USE 2X8 JOISTS AT 16" O.C., ADD SGL. JOIST
 UNDER PARALLEL INTERIOR WALLS AS REQ'D.
 PROVIDE 24 X 36 ACCESS OPENING IN FND. WALL.
 PROVIDE STEPS TO GRADE (MAX. 8")
 HOLD ALL PIERS 1/2" BELOW FND. WALLS.

FOUNDATION VENTILATION INFORMATION
 (MIN. NET AREA OF VENT. REQ'D. = 1/150)
 768 S.F. (CRAWL) x .96 = 737.28 S.I.
 USE 12" WITTEN AUTO. VENT" FND. VENTS
 @ 65 S.I. FREE NET AREA or EQUIVALENT.
 (MIN. NET AREA CAN BE REDUCED TO 1/1500)
 768 S.F. (CRAWL) x .096 = 73.73 S.I.
 USE 2" WITTEN AUTO. VENT" FND. VENTS
 @ 65 S.I. FREE NET AREA or EQUIVALENT.
 W/ APPROVED 6-mil POLYETHYLENE VAPOR RETARDER
 or EQUIVALENT IN CRAWL SPACE.
 REQUIRED VENTS ARE TO BE PLACED SO AS TO
 PROVIDE CROSS-VENTILATION OF THE CRAWL SPACE.

DATE:
 FEB. 22, 2021

FREEDOM FAMILY HOMES
 P.O. BOX 608
 DUNN, N.C. - 28335
 O: (910) 892-1231 FAX: (910) 892-5680
 ©2021, FREEDOM FAMILY HOMES



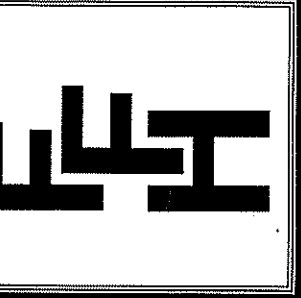
**EXCLUSIVE PLAN FOR
 FREEDOM FAMILY HOMES**
BREWSTER

PLAN: *[Signature]*

SHEET NO.
3

DATE:
FEB. 22, 2021

FREEDOM FAMILY HOMES
P.O. BOX 608
DUNN, N.C. - 28335
O: (910) 892-1231 FAX: (910) 892-5680
© 2021, FREEDOM FAMILY HOMES

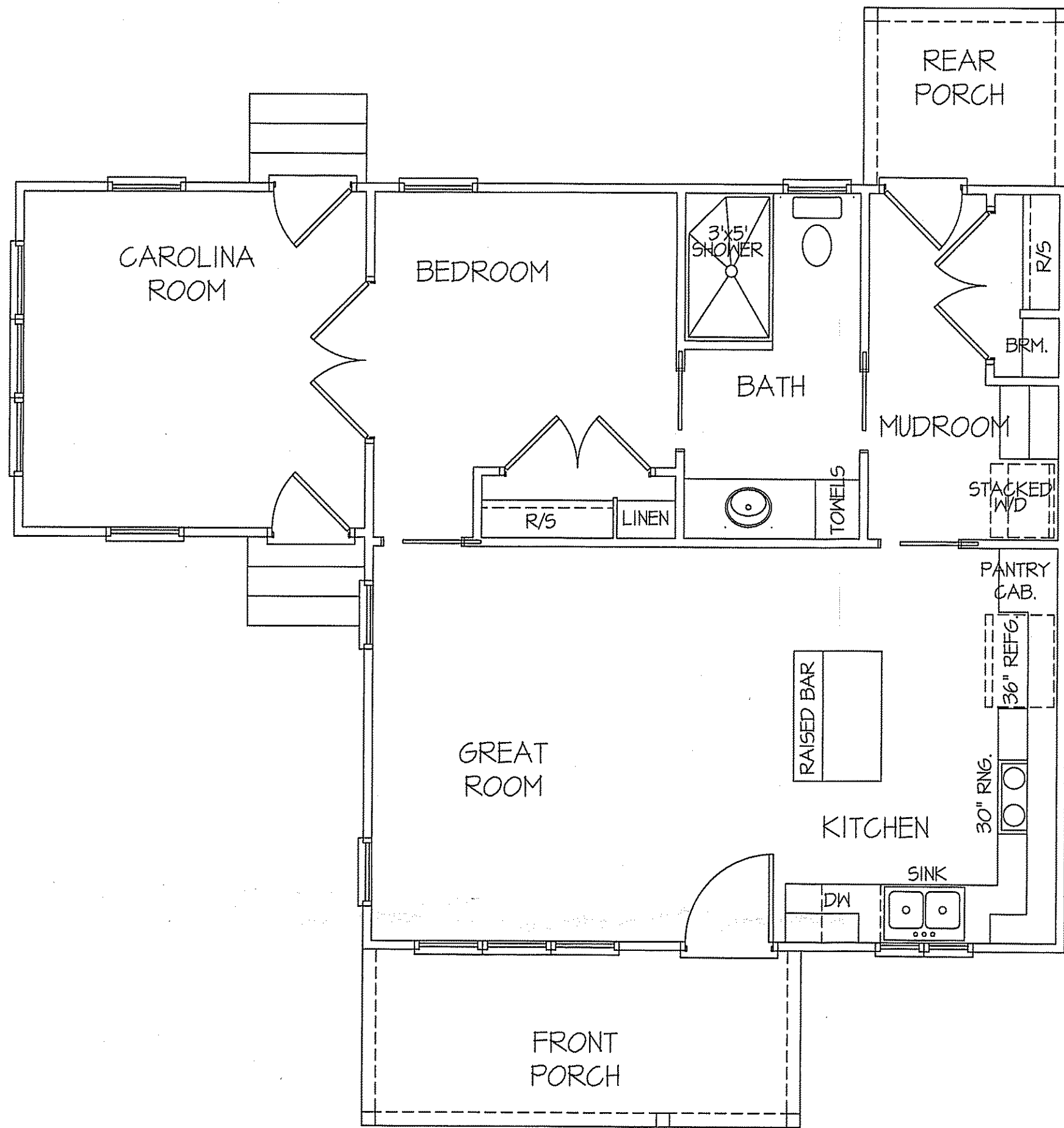


**EXCLUSIVE PLAN FOR
FREEDOM FAMILY HOMES**

BREWSTER

PLAN: *[Signature]*

SHEET NO.
4



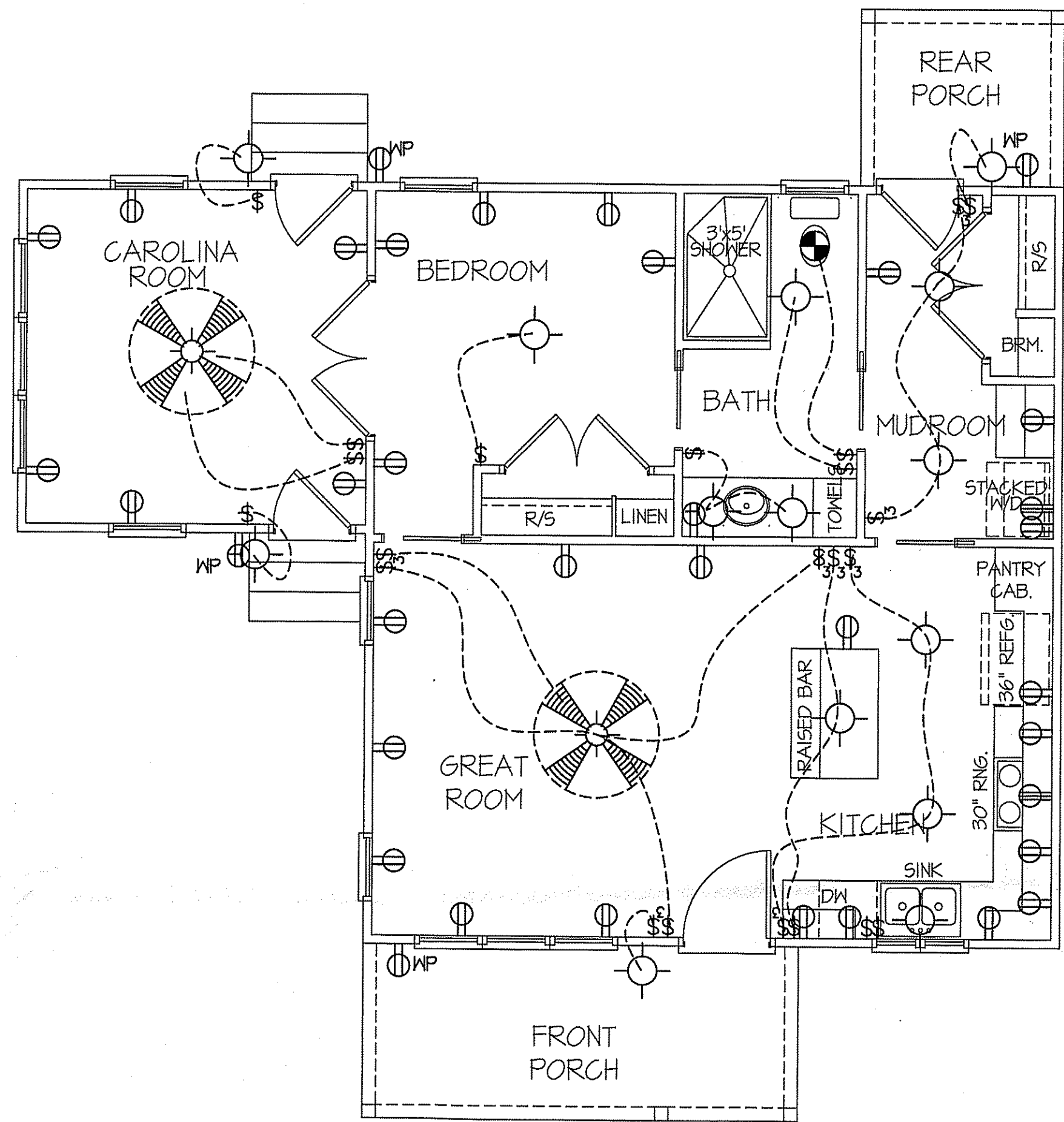
**HVAC
FLOOR PLAN**

SCALE: 1/4"=1'-0"

SQUARE FOOTAGES

HEATED FRAME = 760 S.F.
FRONT PORCH = 90 S.F.
REAR PORCH = 42 S.F.

TOTAL HEAT GAIN = 12,365 B.T.U.H.
TOTAL HEAT LOSS = 19,546 B.T.U.H.



**ELECTRICAL
FLOOR PLAN**

SCALE: 1/4"=1'-0"

SQUARE FOOTAGES

HEATED FRAME = 760 S.F.
FRONT PORCH = 90 S.F.
REAR PORCH = 42 S.F.

ELECTRICAL LEGEND

PROVIDE BURGLAR/SMOKE AND FIRE DETECTORS AS PER MANUFACTURER'S SPECIFICATIONS.
PROVIDE CENTRAL VACUUM SYSTEM AS PER MANUFACTURER'S SPECIFICATIONS.
ALL FANS ARE TO BE CONTROLLED BY VAR/SPEED AND DIRECTIONAL SWITCHES

⊕ SURF. MOUNTED LIGHT	⊕ TYPICAL WALL RECEP.	⊕ TYPICAL SWITCH
○ RECESSED LIGHT	⊕ TOP 1/2 HOT W/SWITCH	⊕ 3-WAY SWITCH
⊕ EYEBALL LIGHT	⊕ CEILING RECEPTACLE	⊕ 4-WAY SWITCH
⊕ FAN/LIGHT COMB.	⊕ FLOOR RECEPTACLE	⊕ DIMMER SWITCH
— FLUORESCENT TUBE	⊕ WATERPROOF RECEP.	⊕ ELEC. PANEL BOX
□ FLUOR. LIGHT FIXTURE	⊕ GROUND FAULT	⊕ T.V. CABLE RECEP.
⊕ EXHAUST FAN	⊕ DISPOSAL UNIT	⊕ TELEPHONE JACK
⊕ CL'G. FAN	⊕ 220 VOLT RECEPTACLE	⊕ COMPUTER JACK
⊕ FLOOD LIGHT		

DATE:
FEB. 22, 2021

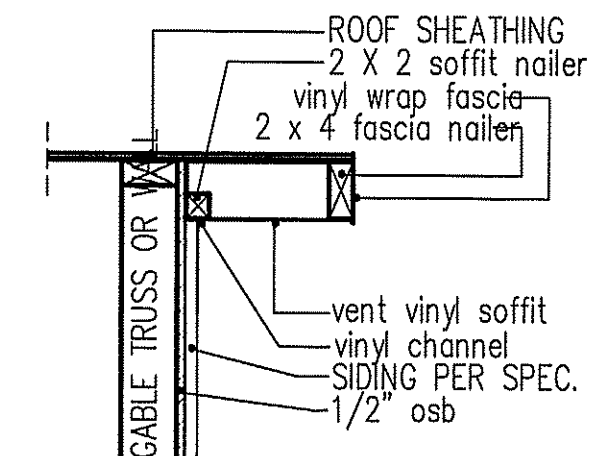
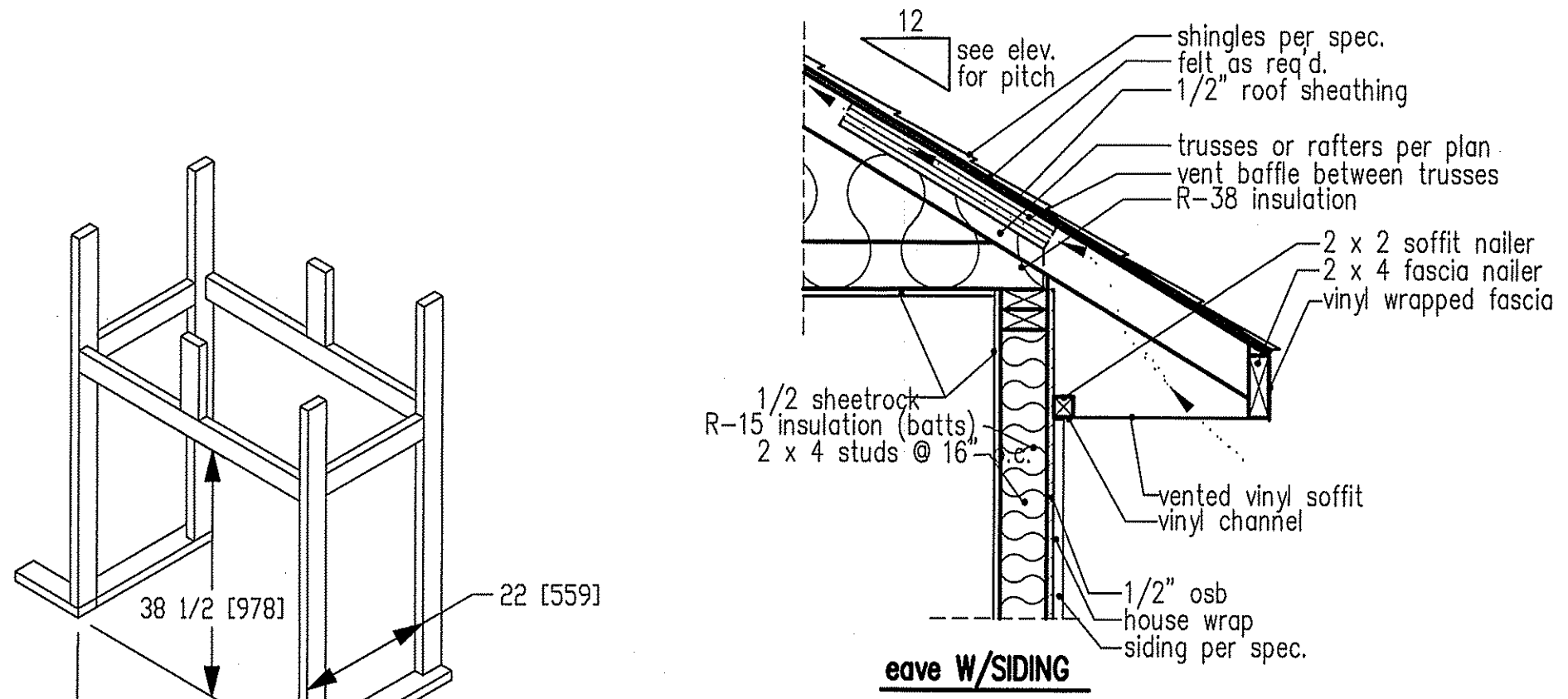
FREEDOM FAMILY HOMES
P.O. BOX 608
DUNN, N.C. - 28335
O: (910) 892-1231 FAX: (910) 892-5680
© 2021, FREEDOM FAMILY HOMES



**EXCLUSIVE PLAN FOR
FREEDOM FAMILY HOMES**

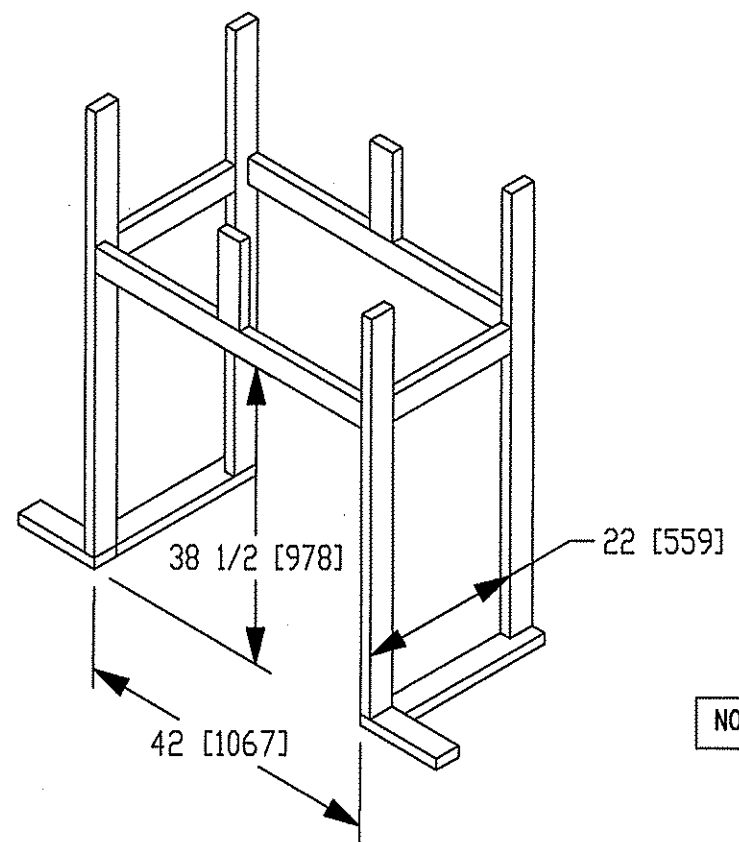
PLAN:
[Signature]

SHEET NO.
5



RAKE w/SIDING

NOTE: OVERHANG DISTANCE NOTED ON ELEVATION SHEET IS ALWAYS MEASURED FROM FRAME LINE



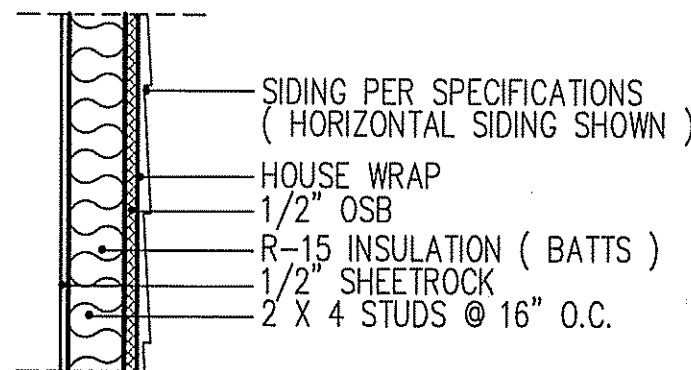
NOTE: OVERHANG DISTANCE NOTED ON ELEVATION SHEET IS ALWAYS MEASURED FROM FRAME LINE

standard eave details

DIMENSIONS IN [] ARE MM

Model 6000-TR	Height		Front Width		Back Width		Depth		Glass Size	BTU Input
	Actual	Framing	Actual	Framing	Actual	Framing	Actual	Framing		
Inches	38	38-1/2	41	42	28-1/2	42	21-1/2	22		

Reference dimensions only. We recommend measuring individual units at installation.



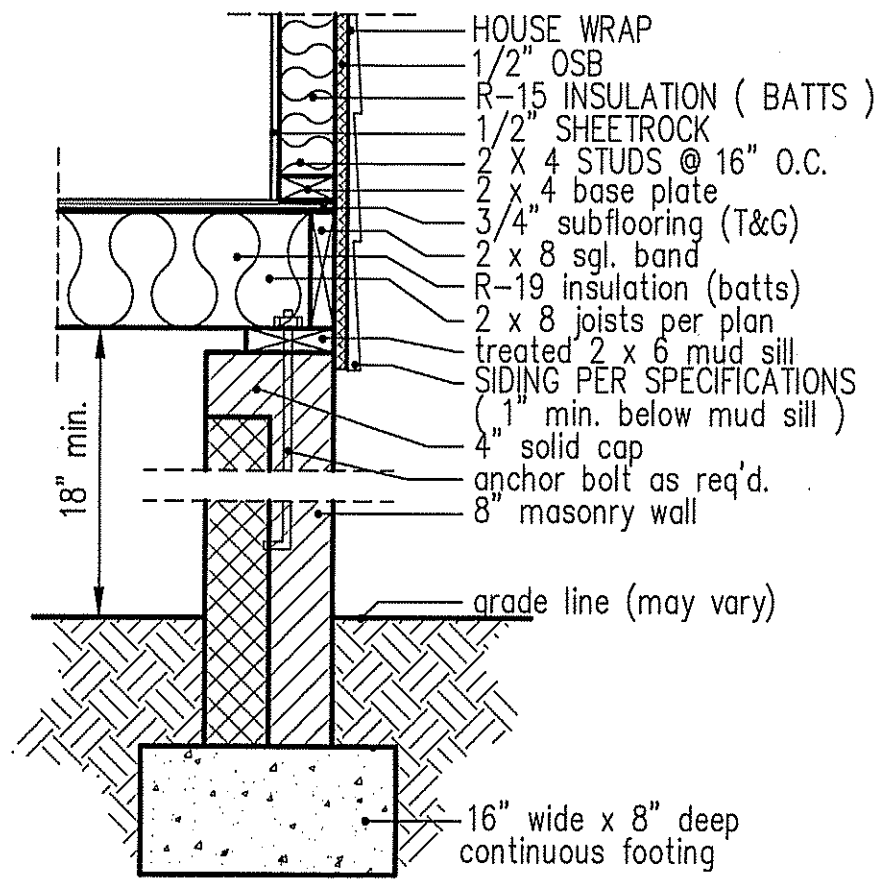
WALL W/Siding

intermediate wall details

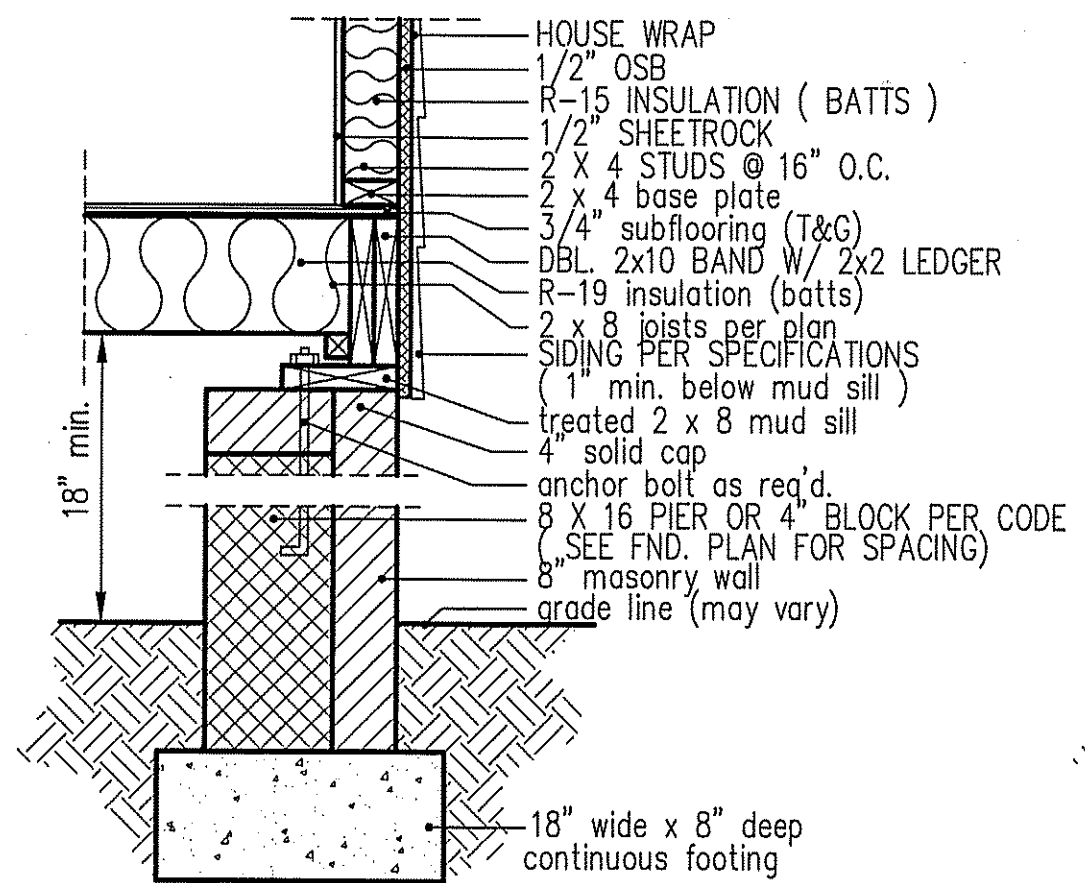
TABLE R602.7.5
MINIMUM NUMBER OF FULL HEIGHT STUDS AT EACH END OF HEADERS IN EXTERIOR WALLS

HEADER SPAN (feet)	MAX. STUD SPACING (Inches) [per Table R602.3(5)]	
	16	24
< 3'	1	1
4'	2	1
8'	3	2
12'	5	3
16'	6	4

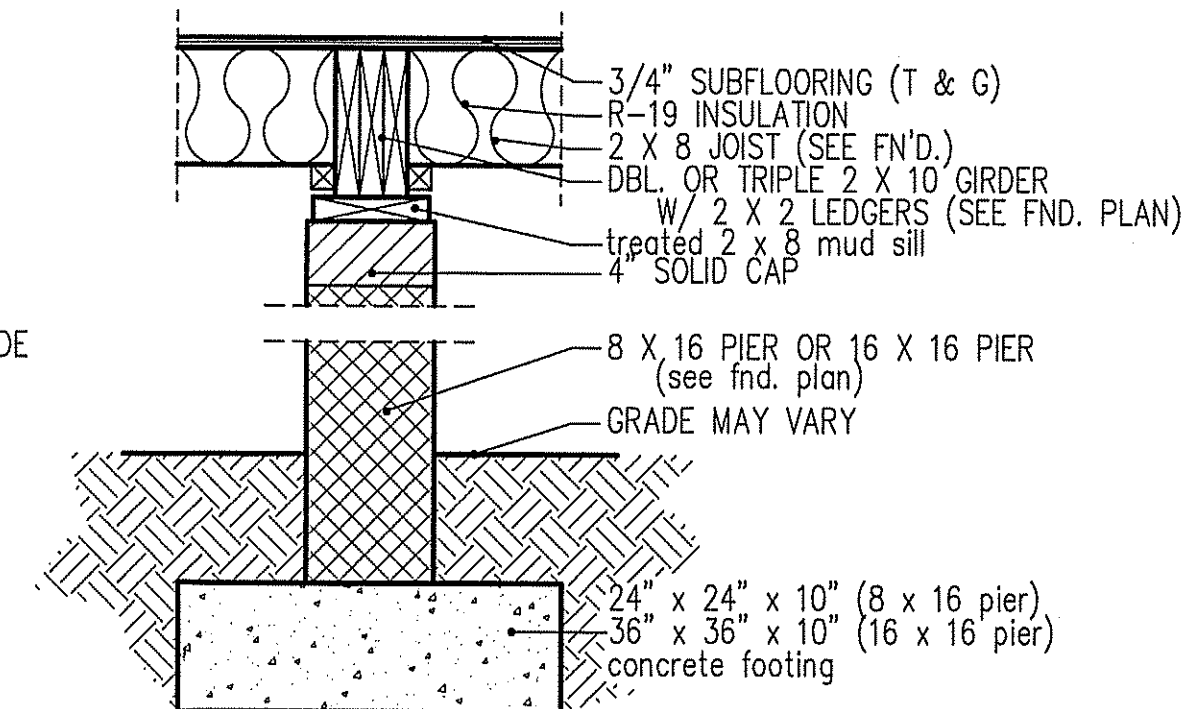
GIRDER AND HEADER SIZES AND JACK STUD REQUIREMENTS ON EXTERIOR AND INTERIOR LOAD BEARING WALLS ARE TO COINCIDE WITH TABLE EXT.-R602.7 (1) AND INT.-R602.7 (2).



**8" BOX SILL
FOUNDATION WALL**



**PIER and CURTAIN
FOUNDATION WALL**



**PIER and GIRDER
DETAIL**

FILE: FFH - BREWSTER-FEB.-2021

