

SOUTHEASTERN SOIL & ENVIRONMENTAL ASSOC., INC.

PROPOSED SUBSURFACE WASTE DISPOSAL SYSTEM DETAIL SHEET

SUBDIVISION: Summerlin  
 INITIAL SYSTEM: APPROVED 25% REDUCTION  
 DISTRIBUTION: SEMIAL  
 BENCHMARK: 100.0  
 NO. BEDROOMS: 4

LOT 42  
 REPAIR APPROVED 25% REDUCTION  
 DISTRIBUTION SEMIAL  
 LOCATION PL 37 (MID POINT)  
 LTAR 0.4 GPD/FT<sup>2</sup>

LINE	FLAG COLOR	ELEVATION	LENGTH
1	B	100.92	65'
2	w	100.67	65'
3	B	100.25	75'
4	w	99.84	75'
5A	B	99.34	20'
			<u>300'</u>
5B	B	99.34	60'
6	w	98.92	90'
7	B	98.42	90'
8	w	98.08	90'
			<u>300'</u>

In final system

BY M EAKER

DATE 02/2020

TYPICAL PROFILE

0-8 LS (V.F., wgs)  
8-32+ SU (F<sub>i</sub>, 16K)  
C-2 = 27"

THERE SHALL BE NO GRADING,  
CUTTING, LOGGING OR OTHER SOIL  
DISTURBANCE IN SEPTIC AREA

HEALTH DEPARTMENT USE ONLY.  
 DESIGNS DO NOT GUARANTEE FUNCTIONALITY

INSTALL AT 12-14". ADD 6" COVER



01-31-19

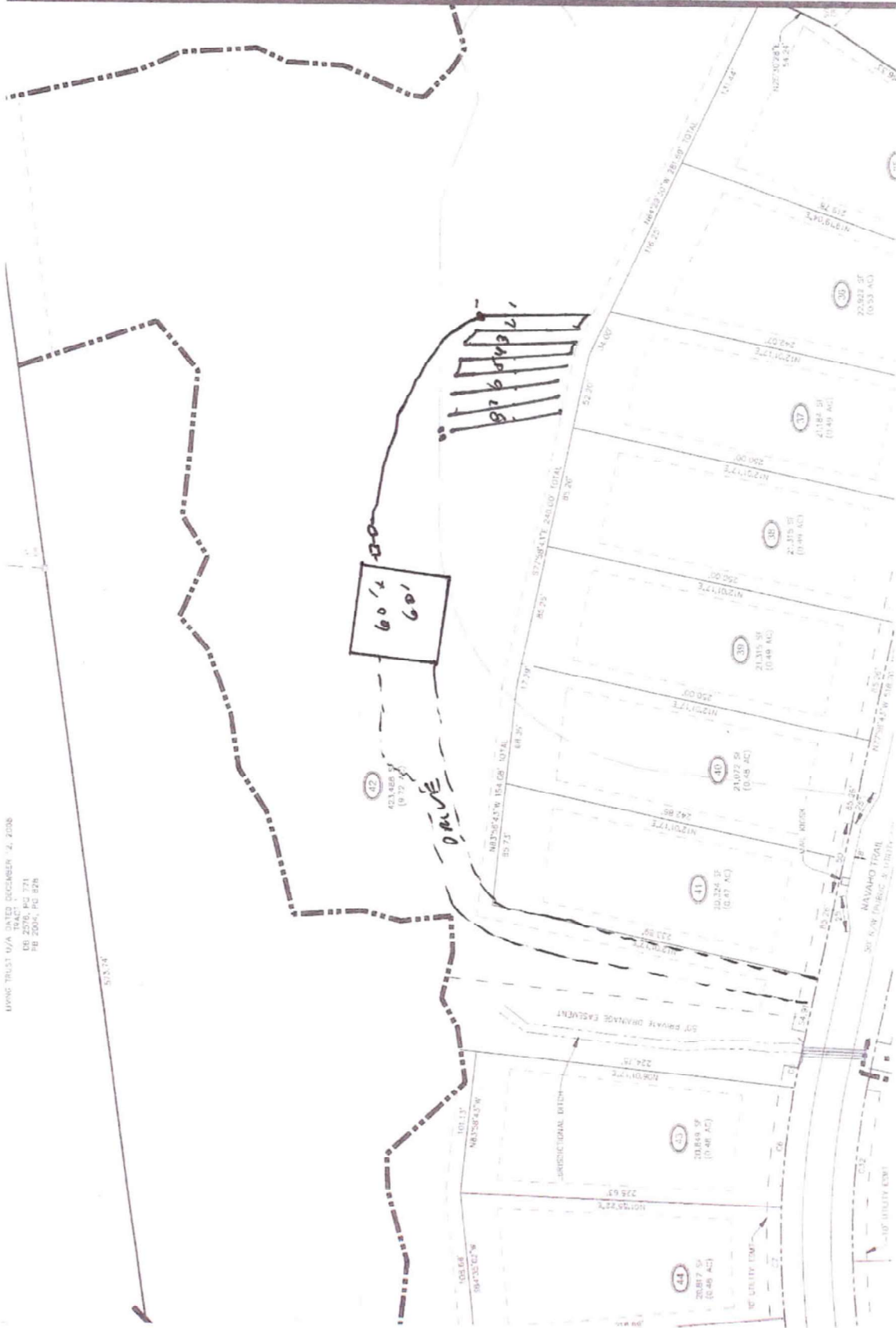
REVISIONS

FINAL DRAWING  
NOT RELEASED FOR CONSTRUCTION

PROJECT NAME

# SUMMERLIN SUBDIVISION PHASE II

SSEA  
Proposed  
Septic  
DETAILED  
SITE PLAN



LYING TRUST U/A DATED DECEMBER 2, 2006  
AS AMENDED BY  
ORD. 2004, PG. 271  
PB. 2004, PG. 828