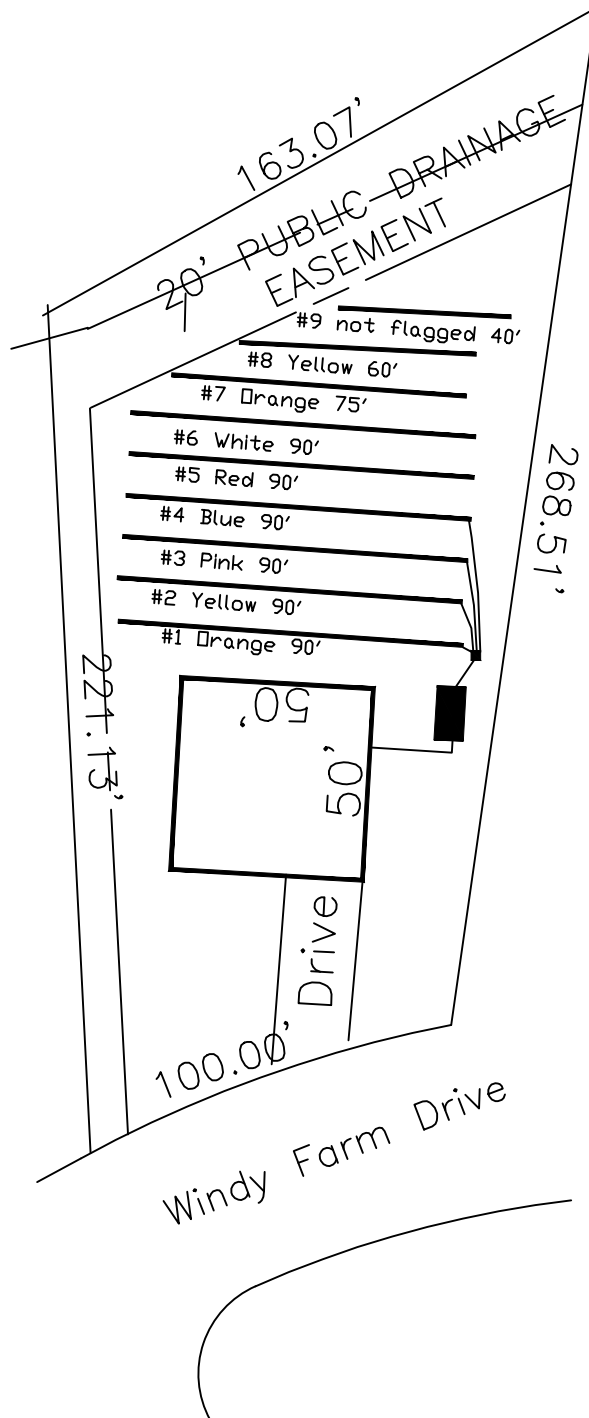


Highland Grove 4-Bedroom Septic Proposal Lot #6

6

27,830 SQ.FT.



*If plumbing is not sufficient a separate pump and tank may be required.

This drawing represents a preliminary septic plan made prior to final construction activities. A revised plan may need to be reworked at time of permitting.

System: Gravity to D-Box
Lines: 1-4 (360')
0.35 LTAR
24" Trench Bottom
Accepted Status System
Repair: Gravity to serial dist.
Lines: 5-9 (360')
0.35 LTAR
24 Trench Bottom
Accepted Status System

Adams
Soil Consulting
919-414-6761
Job #561