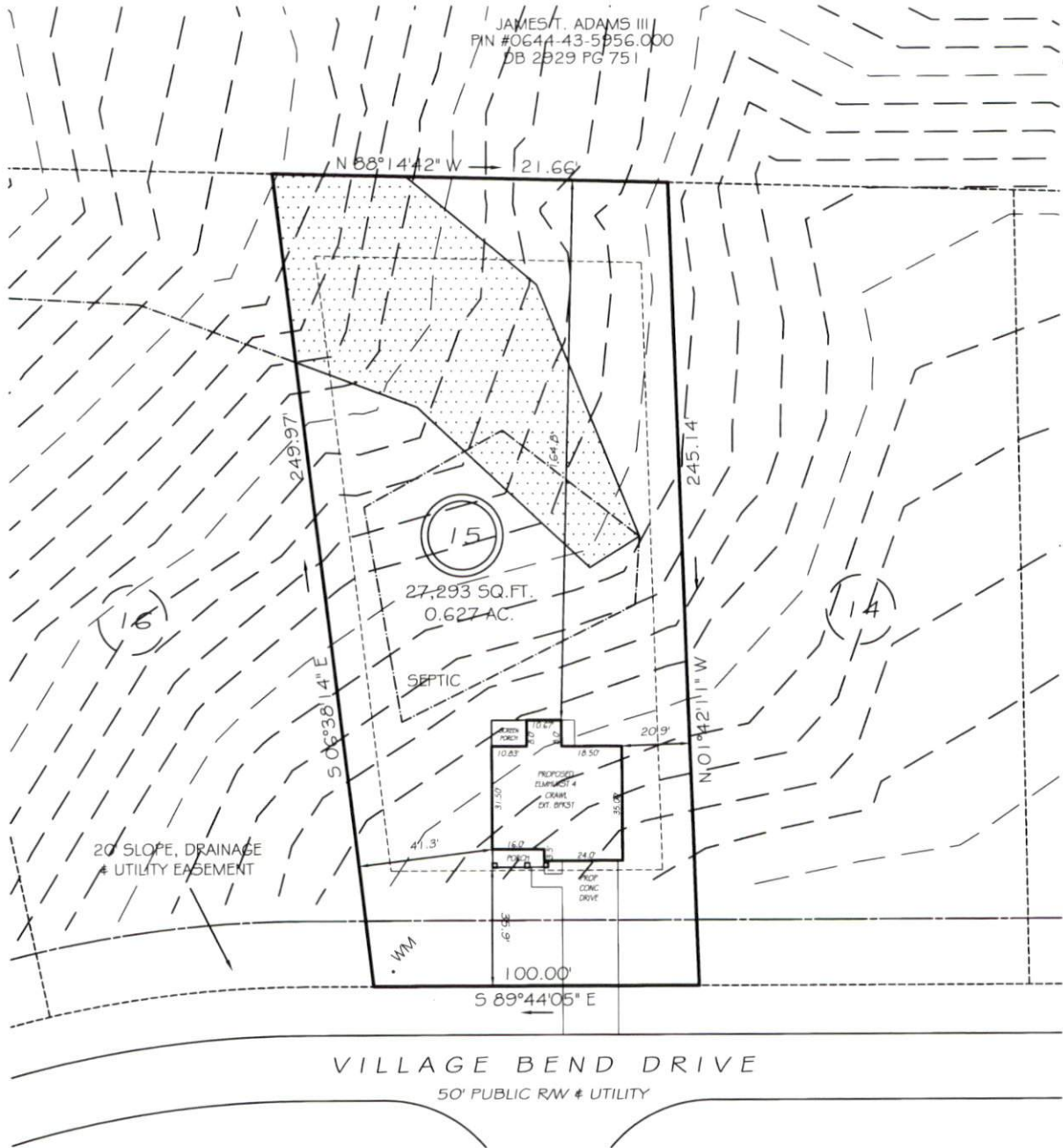


I, MICHAEL P. GRIFFIN, certify that under my direction and supervision this map was drawn from an actual field survey; that the error of closure of the survey as calculated by coordinates is 1: 10,000+; that the area shown hereon was calculated by coordinates.

Witness my hand and seal this day of MONTH 2020.

BK 2019 PGS 421-424
HARNETT CO. REGISTRY

JAMES T. ADAMS III
PIN #0644-43-5956.000
DB 2029 PG 751



NEW IMPERVIOUS RECORDING
PB 2020 PG 306

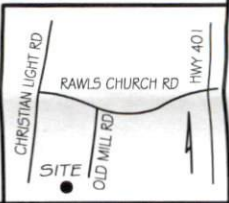
IMPERVIOUS AREAS	
HOUSE	1603 SQ. FT.
DRIVE & WALKS	693 SQ. FT.
PATIO	32 SQ. FT.
TOTAL	2328 SQ. FT.
ALLOWED	3445 SQ. FT.

REVISION: NEW LOCATION & SEPTIC 11/25/20
REVISION: NEW PLANS 11/24/20

SETBACKS	
FRONT	35'
REAR	25'
SIDE	10'
CORNER SIDE	20'

PRELIMINARY
NOT FOR RECORDATION,
SALES OR CONVEYANCE

LEGEND			
EIP	EXISTING IRON PIPE	FES	FLARED END SECTION
IPS	IRON PIPE SET	WM	WATER METER
R/W	RIGHT OF WAY	CO	CLEAN OUT
N/F	NOW OR FORMERLY	FH	FIRE HYDRANT
EIS	EXISTING IRON STAKE	CB	CATCH BASIN



PLOT PLAN