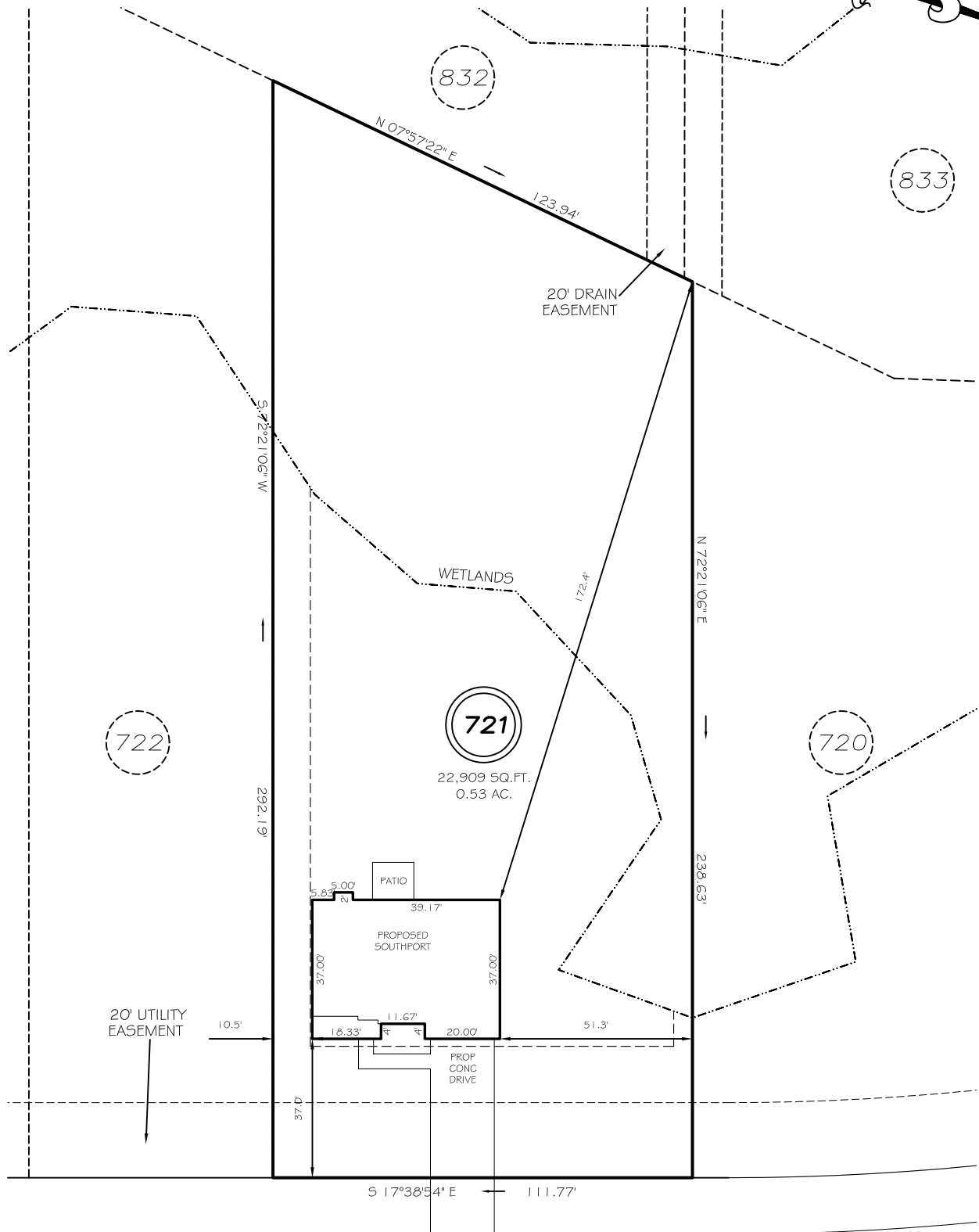


I, MICHAEL P. GRIFFIN, certify that under my direction and supervision this map was drawn from an actual field survey; that the error of closure of the survey as calculated by coordinates is 1: 10,000+; that the area shown hereon was calculated by coordinates.

Witness my hand and seal this day of MONTH 2020.

BK 2019 PG 44-45  
HARNETT CO. REGISTRY



OLD MONTAGUE WAY  
50' PUBLIC/UTILITY RW

SETBACKS

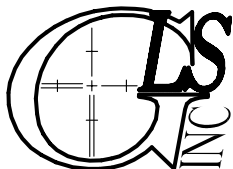
FRONT	35'
REAR	25'
SIDE (ONE SIDE)	5'
SIDE (ONE SIDE)	10'
CORNER SIDE	20'

REVISION: MOVE LEFT 10/6/20

**PRELIMINARY**  
NOT FOR RECORDATION,  
SALES OR CONVEYANCE

LEGEND

EIP	EXISTING IRON PIPE	FES	FLARED END SECTION
IPS	IRON PIPE SET	WM	WATER METER
RW	RIGHT OF WAY	CO	CLEAN OUT
N/F	NOW OR FORMERLY	FH	FIRE HYDRANT
EIS	EXISTING IRON STAKE	CB	CATCH BASIN



GRIFFIN LAND SURVEYING, INC.

P. O. BOX 148  
FUQUAY-VARINA, NC 27526  
(919) - 567 - 1963

PLOT PLAN  
FOR

**H & H HOMES**

LEXINGTON PLANTATION

LOT 721

OLD MONTAGUE WAY

NORTH CAROLINA

HARNETT COUNTY ANDERSON CREEK TOWNSHIP

DRAWN BY NMF

DATE 9/29/20

CHECKED BY MPG

SCALE 1" = 40'