

16'
02"W

101.13'

N83°58'43"W

SITE PLAN APPROVAL
 DISTRICT RAZON USE W0X40
 #BEDROOMS 3
11-13-20 KAG
 ZONE ADMINISTRATIVE

JURISDICTIONAL DITCH

N01°55'22"E

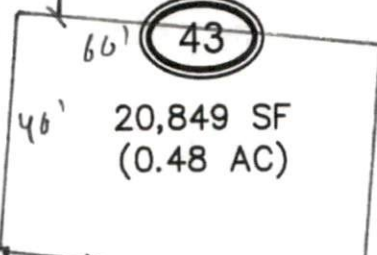
225.63'

128'

N06°01'17"E

224.75'

1)
SF
2)



20,849 SF
(0.48 AC)

5'X10'
ESMT

37

Driveway

C6

C5

50' DRIVE

