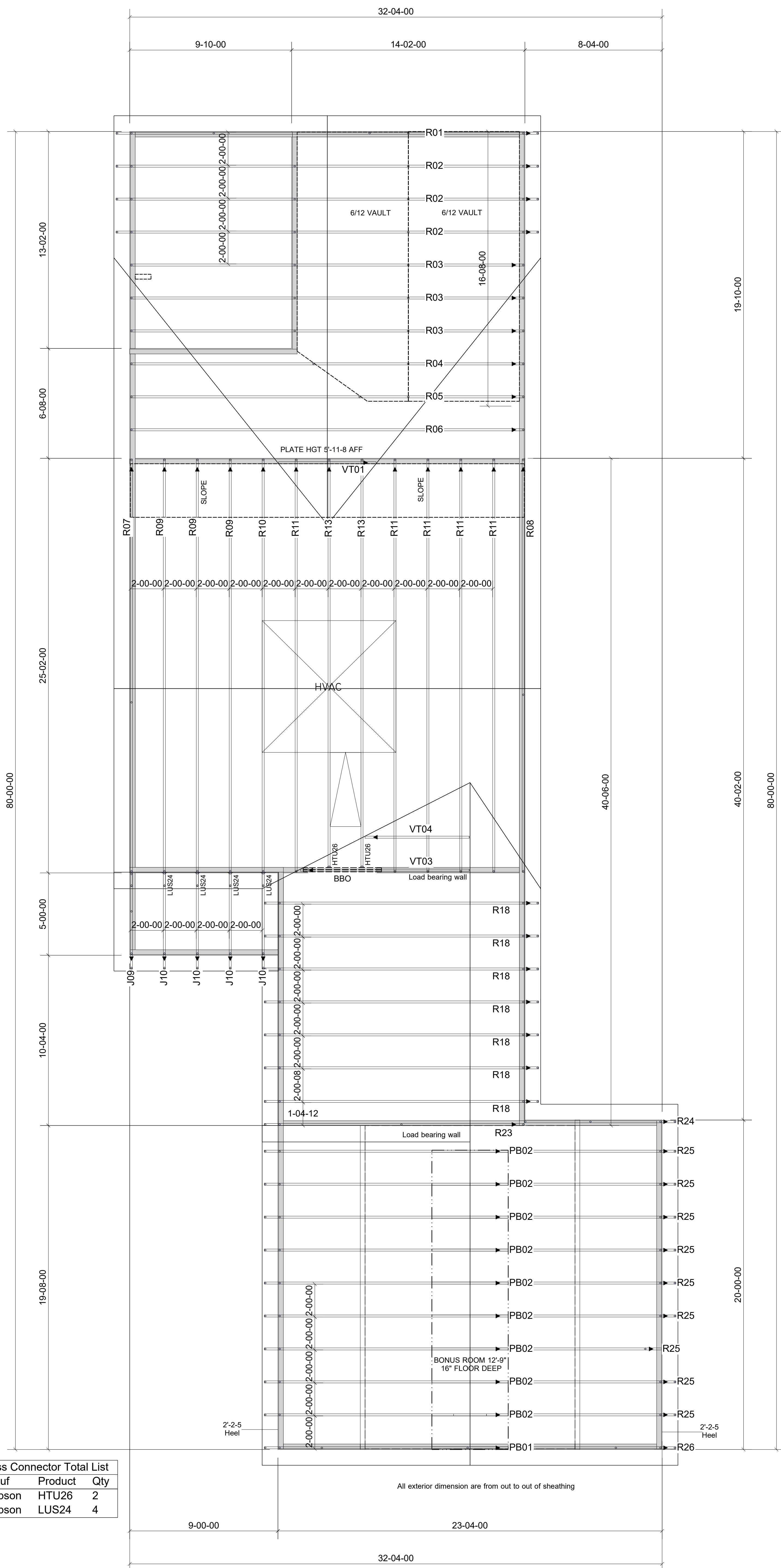


WARNING! Long span trusses, 60' or greater in length, require extreme care and experience for proper and safe handling and installation. For general handling and installation guidance, see the "Guide to Good Practice for Handling, Installing, Restraining & Bracing of Metal Plate Connected Wood Trusses (BCS)", JOINTLY PRODUCED BY SBCA and TPI. For project specific guidance, consult with a registered design professional. ATLANTIC assumes no responsibility for the handling, installation or bracing of trusses.



Truss Connector Total List			
Manuf	Product	Qty	
Simpson	HTU26	2	
Simpson	LUS24	4	

All exterior dimension are from out to out of sheathing

▲ = LEFT END OF TRUSS

NOT FOR CONSTRUCTION



Moncks Corner/Easley, SC (800) 475-3999
Sparta, NC (336) 372-2226

REVISIONS:

Client: **CAPITOL CITY HOMES, LLC**
Job: **LOT 1169 CARRIAGE CIRCLE**
Plan Information:
WATSON II-A

NOT TO SCALE

Date: / /

Drawn By:
AMH

Job #: 20-4692-R01
Sales Rep: Brent Davis
Phone:

ROOF