

General Floor Plan Notes

General Floor Plan Notes shall apply unless noted otherwise on plan.

1. Wall heights: Typically 10'-1 1/2' at first floor and 11'-0" at second floor. All walls shall be one constructed using a double top plate. Space of Double Top Plate as not needed to occur at vertical corners, door and window openings, or at other top floor floor lines. Special wall heights are noted on plans where they occur.
2. Wall thickness is typically 4" of exterior walls, 3 1/2" for interior walls. All walls shall be back up to plumbing fixtures. With gables that 10" high shall be formed with 2x6 framing or greater and shall be finished as specified on the exterior of the plan.
3. Header height shall be 8'-0" AFF of first floor and 7'-6" AFF of second floor unless noted otherwise.
4. Jack's Openings up to 3'-4" wide shall have (1) 2x4 post and girder on each side. Openings greater than 3'-4" wide shall have (2) 2x4 post and girder on each side. Unless specifically call out as included, kitchen cabinets include soffits over wall cabinet.
5. Soffits, Coffered Ceilings, Tidy Callings and other significant plan elements are shown on the plan. Unless specifically call out as included, kitchen cabinets include soffits over wall cabinet.
6. Door & Window frames, where occurring near exterior walls, shall be finished as specified on the plan. Except for walls in closets with doors near corners, doors of closets shall be centered on closet.
7. Windows: Shall have at least (1) window in each room. Windows shall be finished as specified on the plan with tempered glass of (1) standard glazing area. Fall windows shall be installed with obscure glazing.
8. Closets for clothing or coat storage and be finished as specified on the plan. Closets for linen shall have a open wire shelves. Closets for pantries shall have 5" wood shelves, painted.
9. See heads shall be 10' deep, raise shall be a minimum of 7'-0" in, unless noted otherwise.
10. Headers and doors shall be 2" above finished floor and shall be 2" above finished floor. Headers of landings and overbooks of mullered (sticks or bolsters) shall be spaced with no more than 4" between girders.
11. AEC Access shall be provided of all attic areas with 4" x 4" x 4" framing. Access shall be 20" x 30". Full down stairs and access doors in knee walls meeting minimum criteria are also acceptable.
12. Garage door to living spaces shall be 2'-8" x 6'-8" minimum. Details of 4" inside the wall and weather sealed.
13. Garage Walls, as a minimum, shall be as spaced from living space and living space shall be installed 1/2" gypsum board on the garage side of the wall.

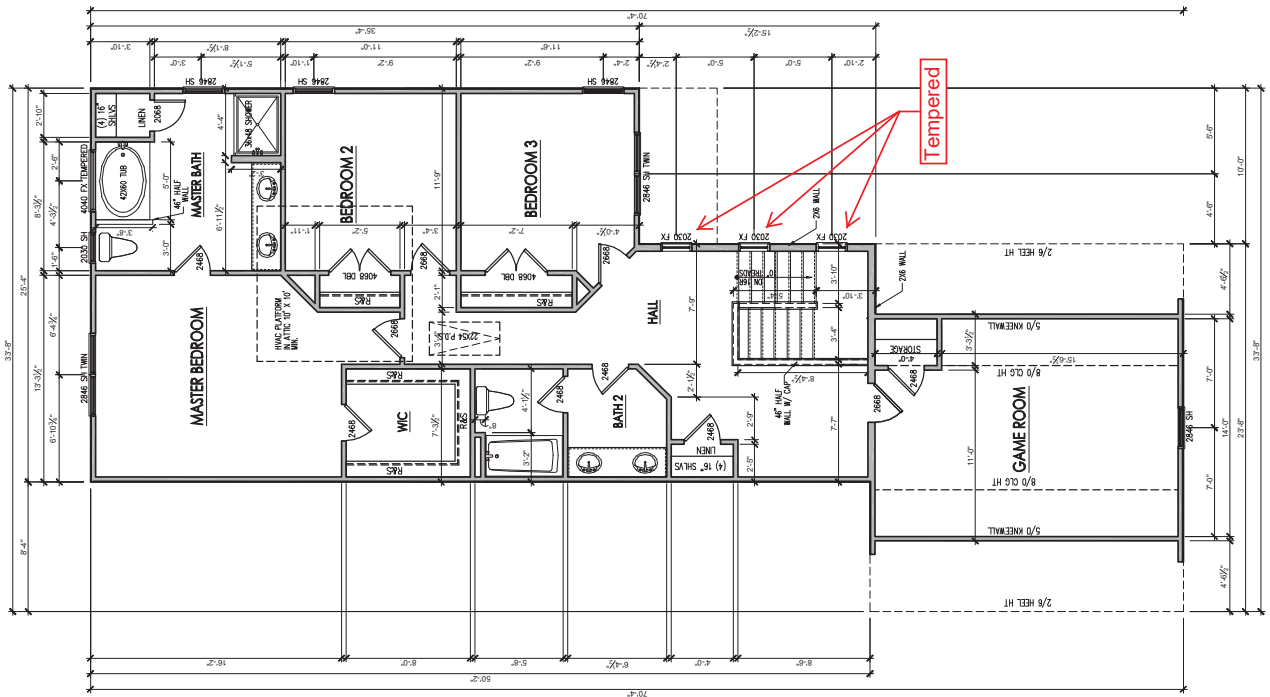


REV #	DESCRIPTION	DATE
1		
2		
3		
4		
5		
6		
7		
8		

2334 - THE NICKLAUS II - LH
Second Floor Plan

OWNER: SOAP DESIGN
ISSUE DATE: 03/05/2017
CURRENT REVISION DATE: XXXXXXXX

SCALE: 1/8" = 1'-0"
SHEET: 2.2



SECOND FLOOR PLAN
SCALE: 1/8"=1'-0" ON 11X17, 1/4"=1'-0" ON 24X34



SOUTH DESIGNS
 (919) 556-2206
 (919) 556-2228
 www.southdesigns.com



Wynn HOMES
 PROFESSIONAL REAL ESTATE SERVICES
 2557 Capitol Drive
 Suite 105
 Creedmoor, NC 27522
 919-526-1347

REV #	DESCRIPTION	DATE
1		
2		
3		
4		
5		
6		
7		
8		

2334 - THE NICKLAUS II - LH
 Heritage European Front & Right Elevations

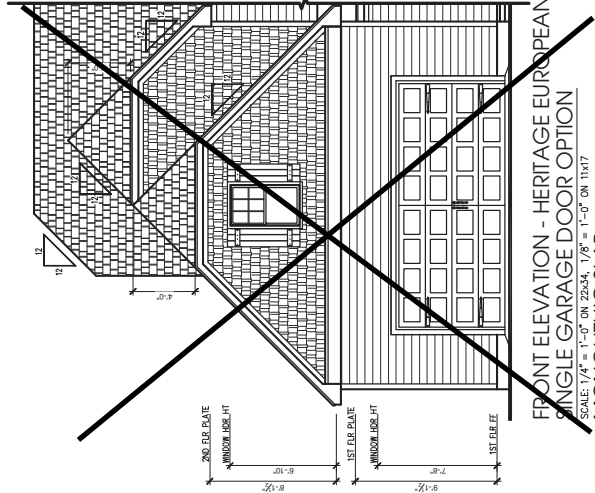
OWNER: Soap Design

ISSUE DATE: 05/05/2017

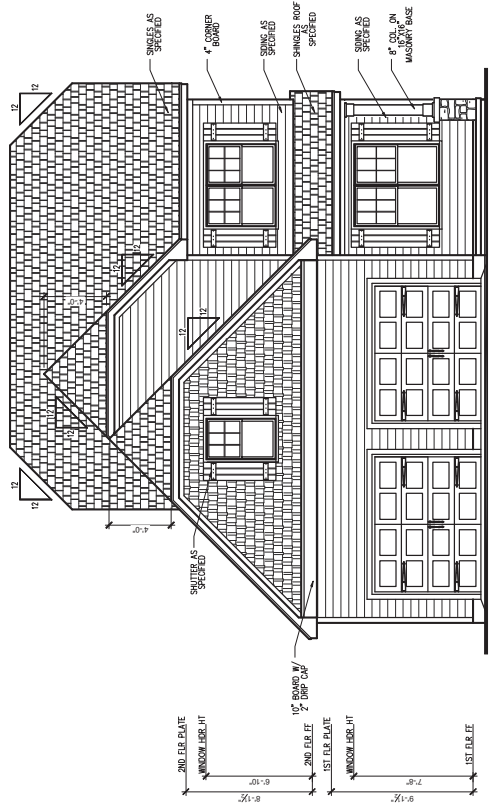
CURRENT REVISION/LIST: XXXXXXXX

SCALE: 1/8" = 1'-0"

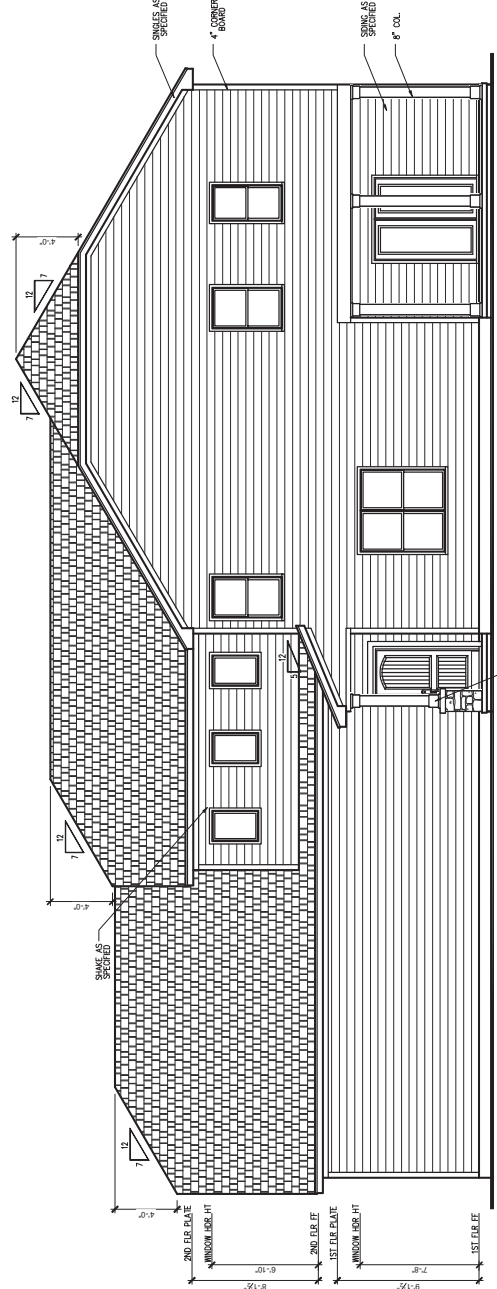
SHEET: 3.A.0



FRONT ELEVATION - HERITAGE EUROPEAN SINGLE GARAGE DOOR OPTION
 SCALE: 1/4" = 1'-0" ON 22x34, 1/8" = 1'-0" ON 11x17
 MONOLITHIC SLAB



FRONT ELEVATION - HERITAGE EUROPEAN MONOLITHIC SLAB
 SCALE: 1/4" = 1'-0" ON 22x34, 1/8" = 1'-0" ON 11x17



RIGHT SIDE ELEVATION - HERITAGE EUROPEAN MONOLITHIC SLAB
 SCALE: 1/4" = 1'-0" ON 22x34, 1/8" = 1'-0" ON 11x17

8" COL. ON MASONRY BASE

SINGLES AS SPECIFIED

4" CORNER BOARD

SINGLES AS SPECIFIED

8" COL.

SHAKE AS SPECIFIED

2ND. FIB. PLATE WINDOW, HORIZ. JT

6'-10"

8'-1 1/2"

2ND. FIB. PLATE WINDOW, HORIZ. JT

7'-8"

8'-1 1/2"

1ST. FIB. PLATE

6'-0"

12

12

4'-0"

12

12

12

12

12

12

12



**SOUTH
DESIGNS**
(919) 556-2206
(919) 556-2228
www.southdesigns.com



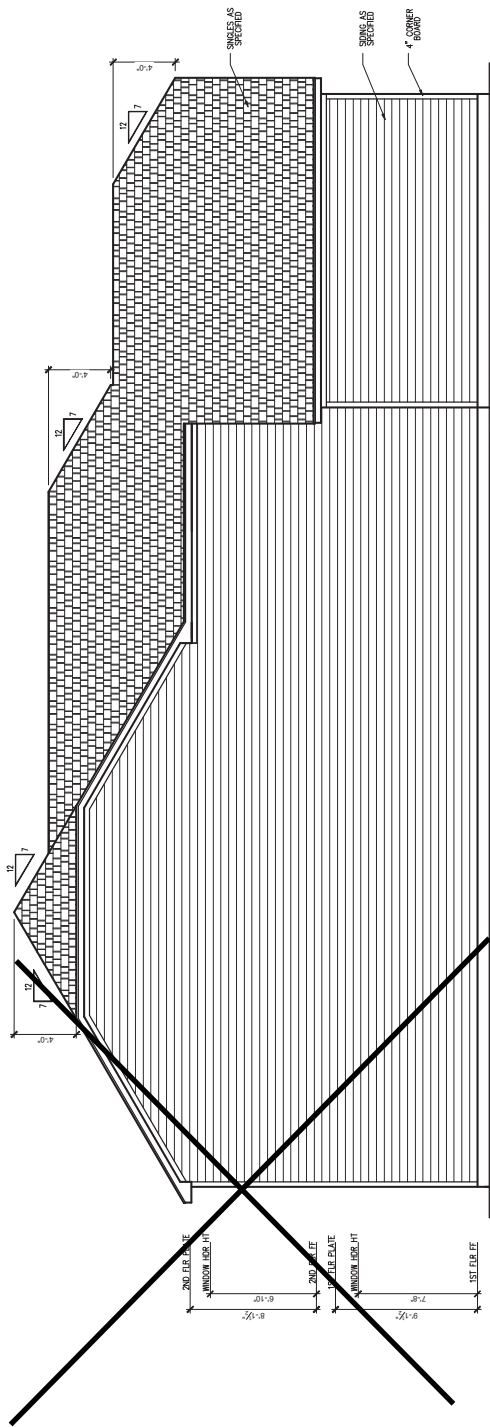
**Wynn
HOMES**
PROFESSIONAL REALTY GROUP
2550 Capital Drive
Suite 105
Credentoor, NC 27522
919-526-1347

REV #	DESCRIPTION	DATE
1		
2		
3		
4		
5		
6		
7		
8		

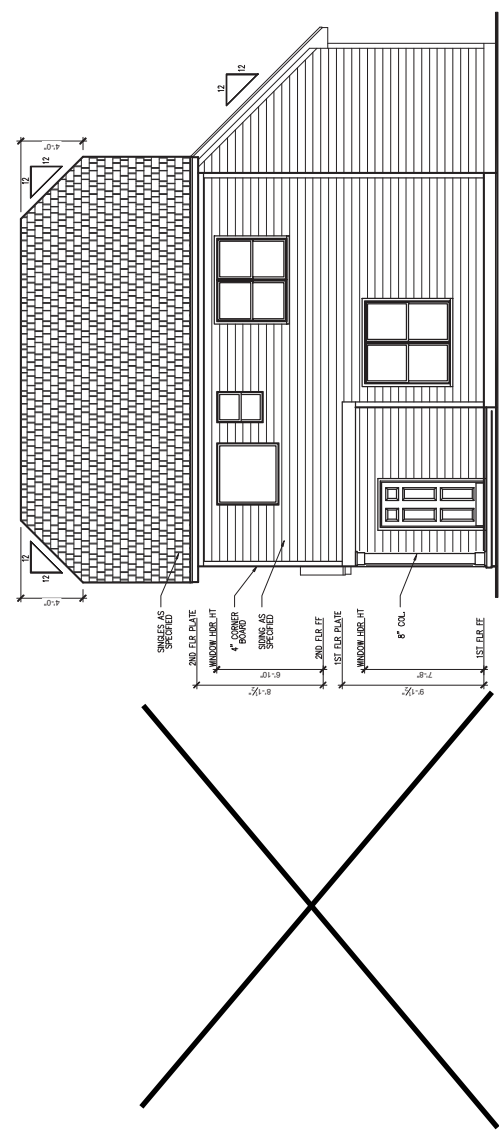
2334 - THE NICKLAUS II - LH
Heritage European Rear & Left Elevations

OWNER:
South Designs
ISSUE DATE:
05/05/2017
CURRENT REVISION/DATE:
XXXXXXXXXX
SCALE:
1/8" = 1'-0"

3.A.1
SHEET



LEFT SIDE ELEVATION - HERITAGE EUROPEAN
SCALE: 1/4" = 1'-0" ON 22234, 1/8" = 1'-0" ON 11x17
MONOLITHIC SLAB



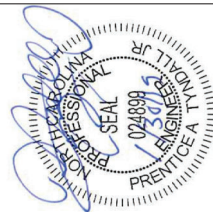
REAR ELEVATION - HERITAGE EUROPEAN
SCALE: 1/4" = 1'-0" ON 22234, 1/8" = 1'-0" ON 11x17
MONOLITHIC SLAB

*Engineers will have no liability construction means, methods, techniques, sequences, or timing unless specifically indicated in the drawings. Any deviation or interpretation of the drawings shall be the responsibility of the contractor. Plans are to be used for the construction of the project. Plans are to be used for the construction of the project. Plans are to be used for the construction of the project.

TYNDALL
ENGINEERING & DESIGN, P.A.
10077-0000 - 2025
3000 N. 14th Street, Suite 100
Farmingdale, NY 11735
Tel: 631-241-1100
Fax: 631-241-1101
www.tyndalleng.com

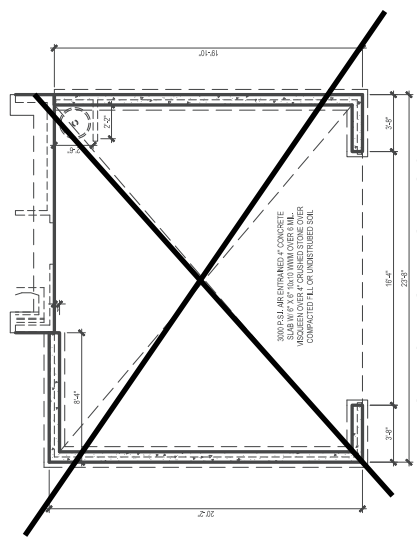
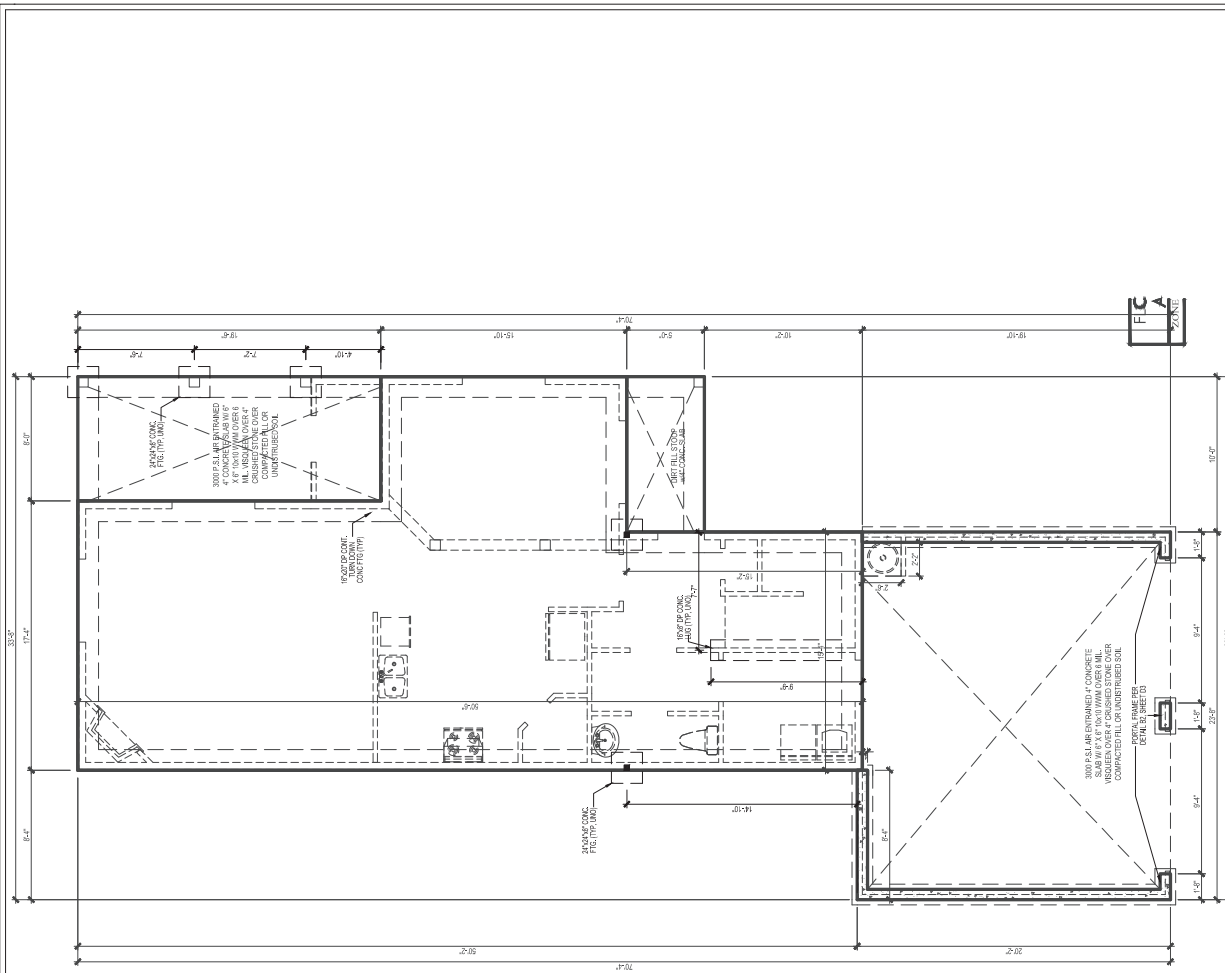


Client: WYNN HOMES
Plan: THE NICKLAUSI GARAGE LEFT



Project No.	1901010039
Date	11/19
Revised/By	RF
Scale	AS SHOWN
Sheet	SET PLAN
Drawn	RF
Checked	RF
Reviewed	RF
Notes	

Sheet Number: **S2**
2 of 4

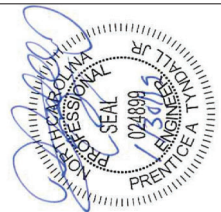


*Engineers and their staff shall be responsible for the design, construction, erection, maintenance, and repair of the structure. Any alterations or modifications to the structure shall be approved by the engineer. Plans are to be submitted to the appropriate authorities for review and approval. Plans to be submitted to the appropriate authorities for review and approval. Plans to be submitted to the appropriate authorities for review and approval.

TYNDALL
ENGINEERING & DESIGN, P.A.
1107 Tyn dall Drive - Suite 100
Wynnton, MD 21155
Phone: 410-326-1107
Fax: 410-326-1108
www.tyndall-engineering.com

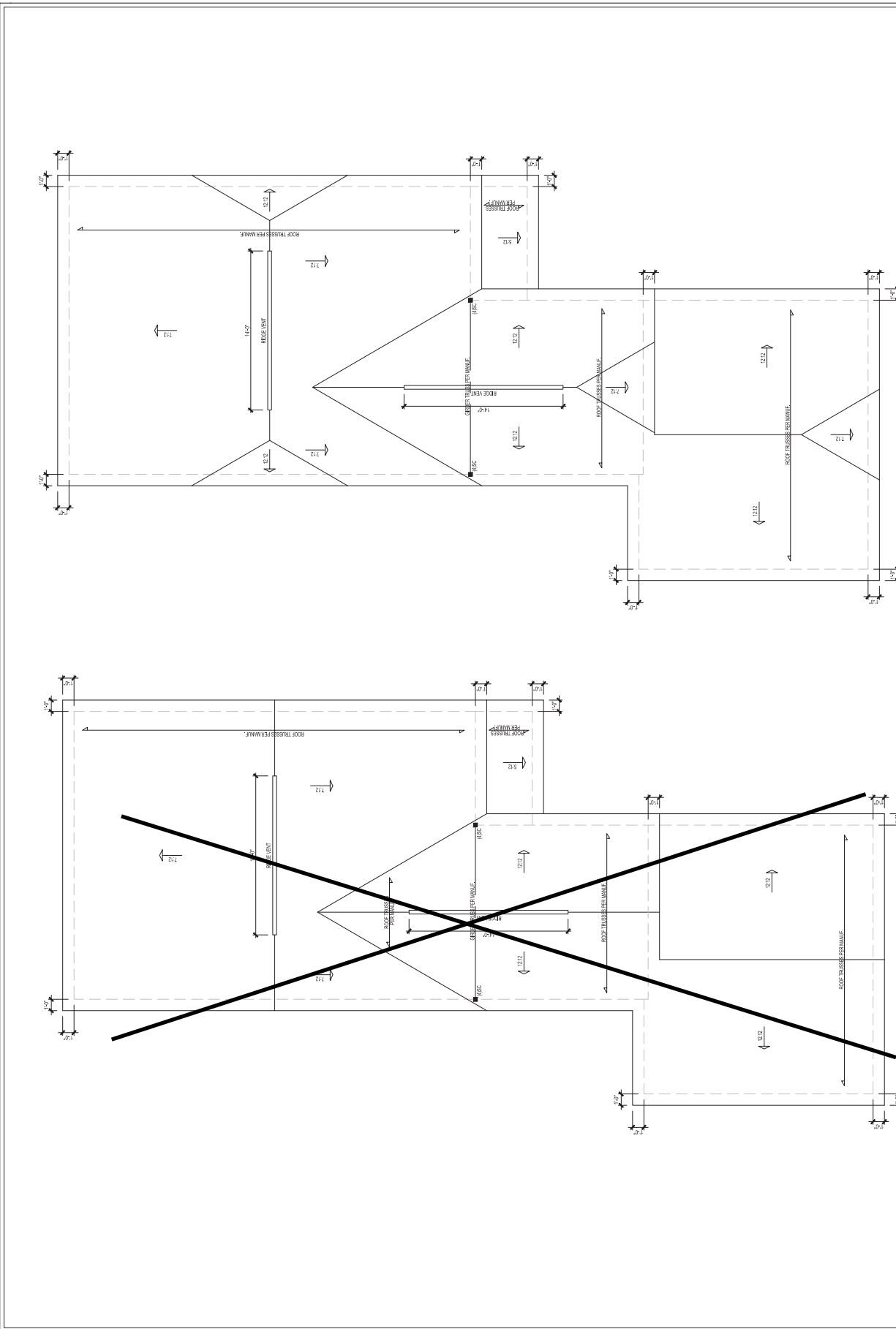


Client: WYNN HOMES
Plan: THE NICKLAUS II GARAGE LEFT



Project No.	18011010039
Date	11/19
Revised/By	
RF	
PAV	
SE	
SEF PLAN	

Sheet Number: **S4**
4 of 4



ROOF PLAN - EUROPEAN
SCALE: 1/8"=1'-0" ON 11x17, 1/4"=1'-0" ON 22x34

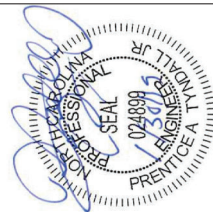
ROOF PLAN - FARMHOUSE
SCALE: 1/8"=1'-0" ON 11x17, 1/4"=1'-0" ON 22x34

*Excludes but does not include construction means, methods, techniques, sequences, etc. Any deviations or substitutions shall be approved in writing by the engineer. Plans are to be brought to the attention of the engineer by the contractor. Plans to be approved by the engineer shall be accompanied by a copy of the contractor's specifications. Plans to be approved by the engineer shall be accompanied by a copy of the contractor's specifications. Plans to be approved by the engineer shall be accompanied by a copy of the contractor's specifications.

TYNDALE
ENGINEERING & DESIGN, P.A.
10777 2nd Avenue, Suite 200
Plymouth, MN 55441
Phone: 763-885-8888
Fax: 763-885-8889
www.tyndale.com

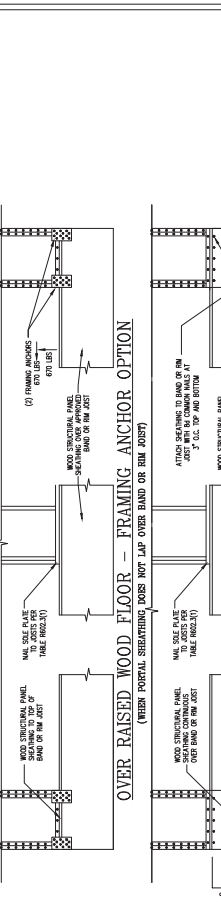
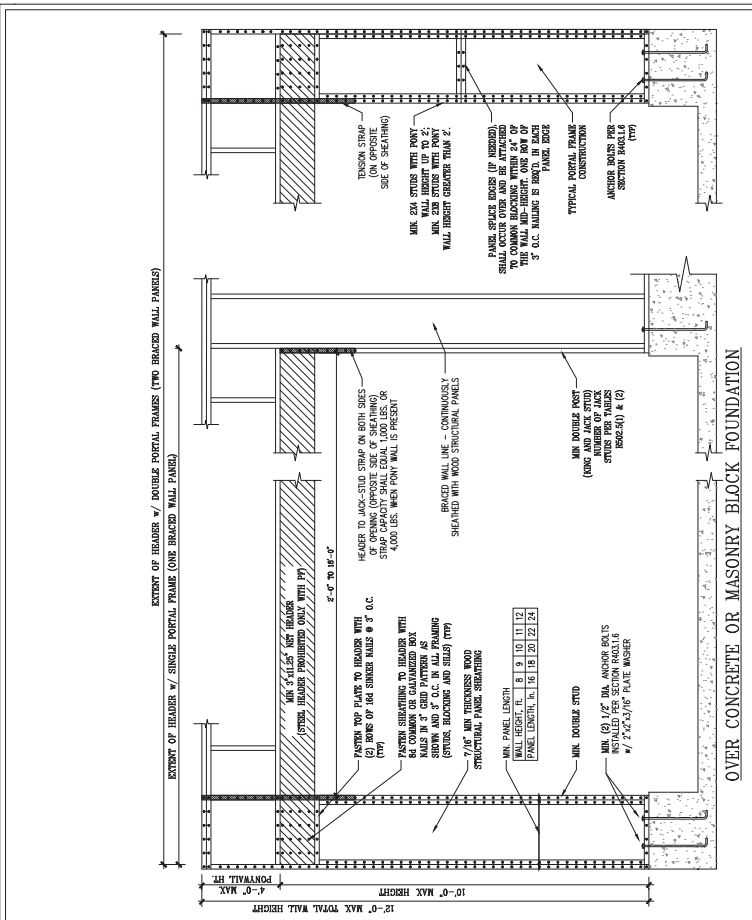


Client: WYNN HOMES
Plan: THE NICKLAUSI GARAGE LEFT

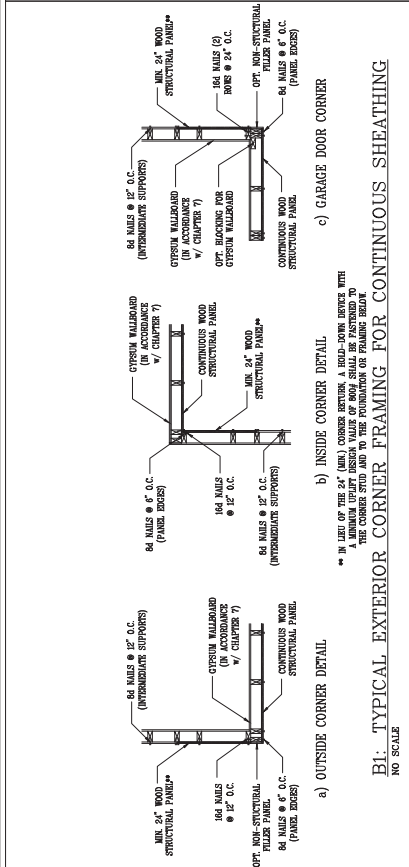


Project No.	1901101039	
Date	10/19/19	
Drawn/Checked By	ACCS	
Scale	PAT	
Name	NOT TO SCALE	
Revision		
Rev.	Date	Remarks

Sheet Number: **D3**
3 of 3



B2: METHOD CS-PF: CONTINUOUSLY SHEATHED PORTAL FRAME
FIGURE B062.01

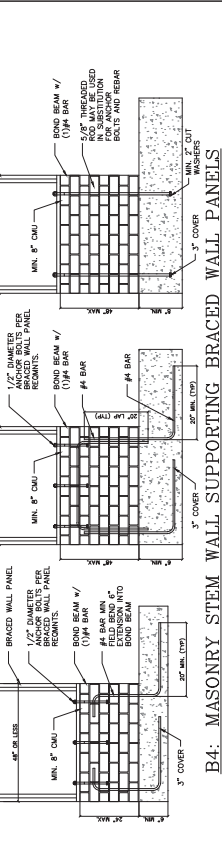
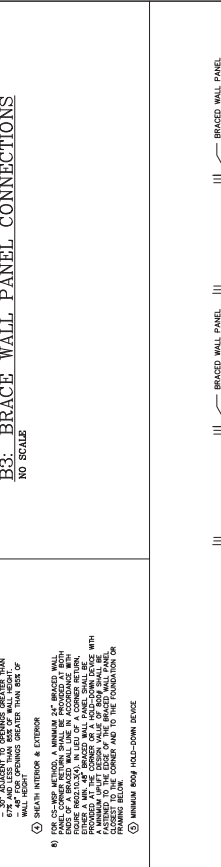


B1: TYPICAL EXTERIOR CORNER FRAMING FOR CONTINUOUS SHEATHING
NO SCALE

METHOD	MATERIAL	MIN. THICKNESS	MIN. PANEL WIDTH	REQUIRED CONNECTION
CS-SP	WOOD STRUCTURAL PANEL	3/8"	64 COMMON NAILS @ 6" O.C.	INTERMEDIATE SUPPORTS
CB	CYRUSIM BOARD	1/2"	54 COMMON NAILS @ 6" O.C.	54 COMMON NAILS @ 6" O.C.
SP	WOOD STRUCTURAL PANEL	3/8"	64 COMMON NAILS @ 6" O.C.	64 COMMON NAILS @ 6" O.C.

MIN. BRACING FOR PANEL PROFILES

B3: BRACE WALL PANEL CONNECTIONS
NO SCALE



B4: MASONRY STEM WALL SUPPORTING BRACED WALL PANELS
WHICH CONTAIN REBAR, THEREAD BOLTS AND ANCHOR BOLTS