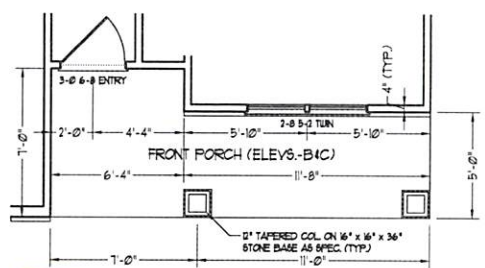


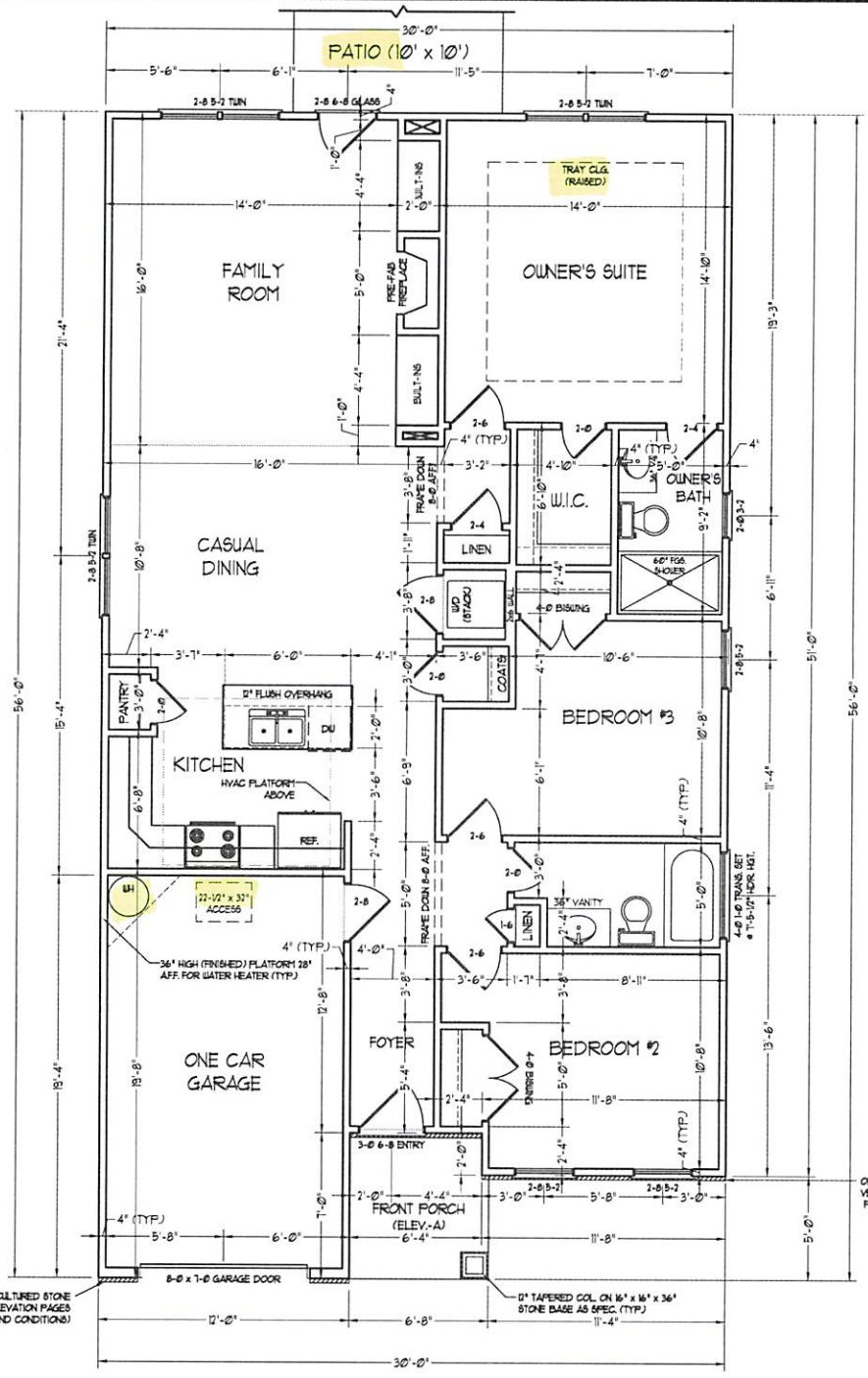


SQUARE FOOTAGE (I.F.S.)	
1st FLOOR:	1795 SQ. FT.
TOTAL:	1795 SQ. FT.
GARAGE:	215 SQ. FT.
FRONT PORCH (ELEV.-A):	46 SQ. FT.
FRONT PORCH (ELEV.-B/C):	107 SQ. FT.
REAR PATIO:	100 SQ. FT.

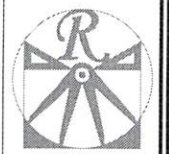


**FRONT PORCH AND BEDROOM #2 WINDOW ELEVATIONS B/C**

SCALE NOTE: 18x24 PRINTS ARE TO SCALE AS NOTED.  
11x17 PRINTS ARE NOT TO SCALE



OPTIONAL CULTURED STONE VENEER (SEE ELEVATION PAGES FOR LOCATIONS AND CONDITIONS)



**RENAISSANCE**  
RESIDENTIAL DESIGN, INC.  
RALEIGH, NC 27612  
(919) 649-4128  
WWW.RRIDCAROLINA.COM

RENAISSANCE RESIDENTIAL DESIGN, INC. RECEIVES THE RIGHT TO MAKE AND TO TAKE ANY AND ALL NECESSARY ENGINEERING, MATERIALS, AND MECHANICAL WORK WITHOUT NOTICE. THESE DRAWINGS ARE FOR THE PURPOSE OF CONVEYING AN ARCHITECTURAL CONCEPT ONLY. RENAISSANCE RESIDENTIAL DESIGN, INC. RECEIVES ADDITIONAL RIGHTS UNDER COMMON LAW COPYRIGHT AND OTHER PROPERLY RIGHTS IN THESE PLANS. THESE PLANS AND DRAWINGS ARE NOT TO BE REPRODUCED, CHANGED, COPIED IN ANY FORM OR MANNER, WITHOUT FIRST OBTAINING THE EXPRESS WRITTEN CONSENT OF RENAISSANCE RESIDENTIAL DESIGN, INC. NOT BE THEY TO BE ASSIGNED TO ANY THIRD PARTY WITHOUT THE FIRST WRITING BY WRITTEN PERMISSION AND CONSENT.

**WEAVER**  
**HOMES**  
3215 WEAVER DRIVE, SUITE 100  
WALTON, NC 28688  
919-435-2244

PLEASE REFER TO THE ARCHITECTURAL ELEVATION OPTIONS SHEET FOR FINISHES, MATERIALS, AND DIMENSIONS. FINISHES, MATERIALS, AND DIMENSIONS ARE SUBJECT TO CHANGE WITHOUT NOTICE. DIMENSIONS ARE TO FACE UNLESS OTHERWISE SPECIFIED. ALL DIMENSIONS ARE TO FACE UNLESS OTHERWISE SPECIFIED. ALL DIMENSIONS ARE TO FACE UNLESS OTHERWISE SPECIFIED. ALL DIMENSIONS ARE TO FACE UNLESS OTHERWISE SPECIFIED. ALL DIMENSIONS ARE TO FACE UNLESS OTHERWISE SPECIFIED.

**WEAVER HOMES**  
**CAROLINA COLLECTION**  
**LEYLAND DRIVE LEFT**

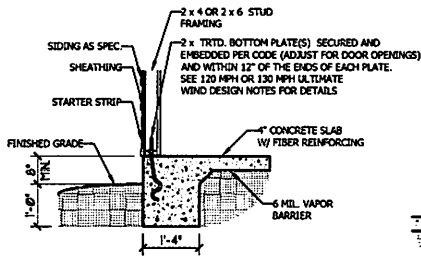
DATE:	JUNE 15, 2020
REV:	
SCALE:	1/4" = 1'-0"
DRAWN BY:	WO
ENGINEERED BY:	
REVIEWED BY:	

FIRST FLOOR PLAN  
**A-4**

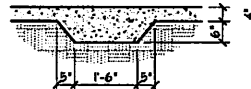


**ULTIMATE DESIGN WIND SPEED NOTES FOR LESS THAN 30' MEAN ROOF HEIGHT:**

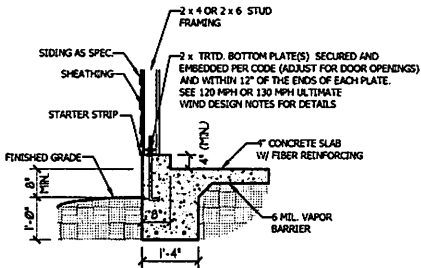
1. STRUCTURAL DESIGN PER NORTH CAROLINA RESIDENTIAL CODE, 2018 EDITION.
2. FOR 120 MPH WIND ZONES INSTALL 1/2" ANCHOR BOLTS 6'-0" O.C. AND WITHIN 1'-0" FROM END OF EACH CORNER. ANCHOR BOLTS MUST EXTEND A MINIMUM OF 7" INTO CONCRETE OR 15" INTO MASONRY. LOCATE BOLT WITHIN MIDDLE THIRD OF PLATE WIDTH.
3. FOR 130 MPH WIND ZONES INSTALL 1/2" ANCHOR BOLTS 4'-0" O.C. AND WITHIN 1'-0" FROM END OF EACH CORNER. ANCHOR BOLTS MUST EXTEND A MINIMUM OF 7" INTO CONCRETE OR 15" INTO MASONRY. LOCATE BOLT WITHIN MIDDLE THIRD OF PLATE WIDTH.
4. MEAN ROOF HEIGHT IS LESS THAN 30 FEET.
5. EXTERIOR WALLS DESIGNED FOR 120 OR 130 MPH WINDS.
6. INSTALL 7/16" OSB SHEATHING ON ALL EXTERIOR WALLS OF ALL STORIES IN ACCORDANCE WITH SECTION 602.10.3 OF THE NCRC, 2018 EDITION.
7. ENERGY EFFICIENCY COMPLIANCE AND INSULATION VALUES OF THE BUILDING TO BE IN ACCORDANCE WITH CHAPTER 11 OF THE NCRC, 2018 EDITION.



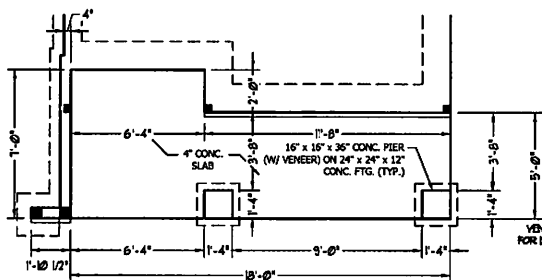
**TYPICAL SLAB DETAIL**



**THICKENED SLAB DETAIL**

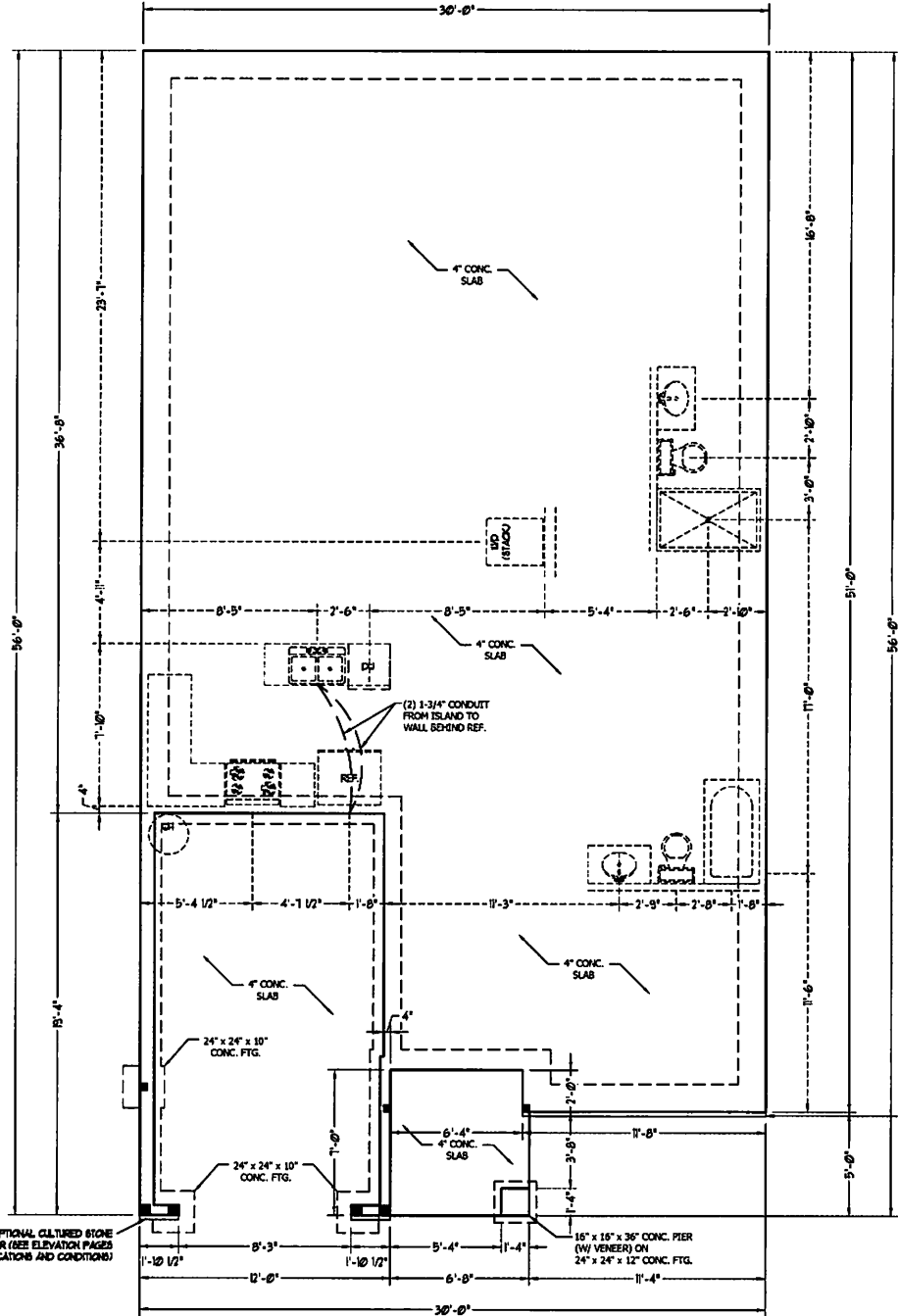


**GARAGE CURB DETAIL**

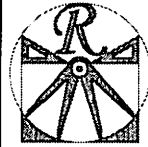


SCALE NOTE: 18x24 PRINTS ARE TO SCALE AS NOTED.  
11x17 PRINTS ARE NOT TO SCALE

**FRONT PORCH ELEVATIONS-B&C**



OPTIONAL CULTURED STONE VENEER (SEE ELEVATION PAGES FOR LOCATIONS AND CONDITIONS)



**RENAISSANCE**  
RESIDENTIAL DESIGN, INC.  
RALEIGH, NC 27612  
(919) 849-4128  
WWW.RENDESIGN.COM

RENAISSANCE RESIDENTIAL DESIGN, INC. RESERVES THE RIGHT TO MAKE MODIFICATIONS TO THESE PLANS. CONDITIONS, MATERIALS AND SPECIFICATIONS NOTED ON THESE DRAWINGS ARE FOR THE PURPOSE OF CONVEYING AN ARCHITECTURAL CONCEPT ONLY.

**WEAVER HOMES**  
310 W. WEAVER DRIVE, SUITE 100  
RALEIGH, NC 27612  
WWW.WEAVERHOMES.COM

PER ALL APPLICABLE REGULATIONS, THE DESIGNER ASSUMES NO LIABILITY FOR THE ACCURACY OF THE INFORMATION PROVIDED HEREON. THE USER OF THESE PLANS SHALL BE RESPONSIBLE FOR OBTAINING ALL NECESSARY PERMITS AND FOR VERIFYING THE ACCURACY OF ALL INFORMATION PROVIDED HEREON. THE USER SHALL BE RESPONSIBLE FOR OBTAINING ALL NECESSARY PERMITS AND FOR VERIFYING THE ACCURACY OF ALL INFORMATION PROVIDED HEREON.

**WEAVER HOMES**  
CAROLINA COLLECTION  
LEYLAND DRIVE LEFT

DATE: JUNE 15, 2020  
REV:  
SCALE: 1/4" = 1'-0"  
DRAWN BY: WJO  
ENGINEERED BY:  
REVIEWED BY:  
MONO SLAB FOUNDATION PLAN

S-1

**BRACE WALL PANEL NOTES:**

EXTERIOR WALLS: ALL EXTERIOR WALLS TO BE SHEATHED WITH CS-HSP OR CS-SFB IN ACCORDANCE WITH SECTION R602.10.3 UNLESS NOTED OTHERWISE.

REQUIRED LENGTH OF BRACING: REQUIRED BRACE WALL LENGTH FOR EACH SIDE OF THE CIRCUMSCRIBED RECTANGLE ARE INTERPOLATED PER TABLE R602.10.3. METHODS CS-HSP AND CS-SFB CONTRIBUTE THEIR ACTUAL LENGTH. METHOD GB CONTRIBUTES 0.5 ITS ACTUAL LENGTH. METHOD PF CONTRIBUTES 1.5 TIMES ITS ACTUAL LENGTH.

GYPSUM: ALL INTERIOR SIDES OF EXTERIOR WALLS AND BOTH SIDES OF INTERIOR WALLS TO HAVE 1/2" GYPSUM INSTALLED, WHEN NOT USING METHOD GB GYPSUM TO BE FASTENED PER TABLE R702.3.5. METHOD GB TO BE FASTENED PER TABLE R602.10.1.

HD: 800 LBS HOLD DOWN DEVICE FASTENED TO THE EDGE OF THE BRACE WALL PANEL NEAREST TO THE CORNER

METHODS: PER TABLE R602.10.1

**STRUCTURAL NOTES:**

1. ALL FRAMING LUMBER TO BE SPF #2 (UNO). ALL TREATED LUMBER TO BE SYP #2 (UNO).
2. ALL LOAD BEARING HEADERS TO BE (2) 2 x 4 (UNO).
3. INSTALL AN EXTRA JOIST UNDER WALLS PARALLEL TO FLOOR JOISTS
4. WINDOW AND DOOR HEADERS TO BE SUPPORTED W/ (1) JACK STUD AND (1) KING STUD EA. END (UNO). SEE TABLE R602.7.5 FOR ADDITIONAL KING STUD REQUIREMENTS.
5. SQUARES DENOTE POINT LOADS WHICH REQUIRE SOLID BLOCKING TO GIRDER OR FOUNDATION. ALL SQUARES TO BE (2) STUDS (UNO).
6. ALL 4 x 4 POSTS SHALL BE ANCHORED TO SLABS W/ SIMPSON A3084 POST BASES (OR EQUAL) AND 6 x 6 POSTS W/ A3086 POST BASES (OR EQUAL) (UNO). ALL 4 x 4 AND 6 x 6 POSTS TO BE INSTALLED WITH 700 LB CAPACITY UPLIFT CONNECTORS AT TOP (UNO).
7. FOR FIBERGLASS, ALUMINUM, OR COLUMN ENG. BY OTHERS, SECURE TO SLAB W/ (2) METAL ANGLES USING 2" CONC. SCREWS. FASTEN ANGLES TO COLUMNS W/ 1/4" THROUGH BOLTS W/ NUTS AND WASHERS. LOCATE ANGLES ON OPPOSITE SIDES OF COLUMN. THROUGH BOLTS MUST BE INSTALLED PRIOR TO SETTING COLUMN.

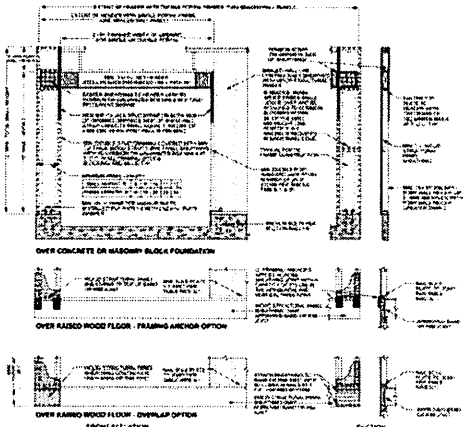
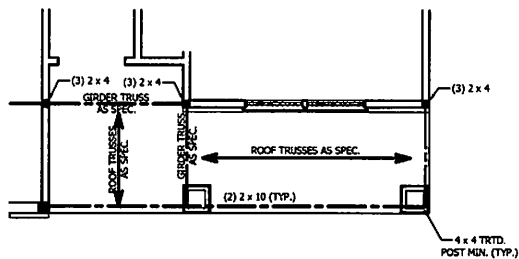
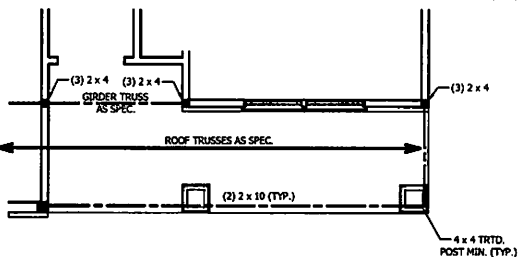


FIGURE R602.10.1  
METHOD PF—PORTAL FRAME CONSTRUCTION

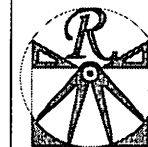
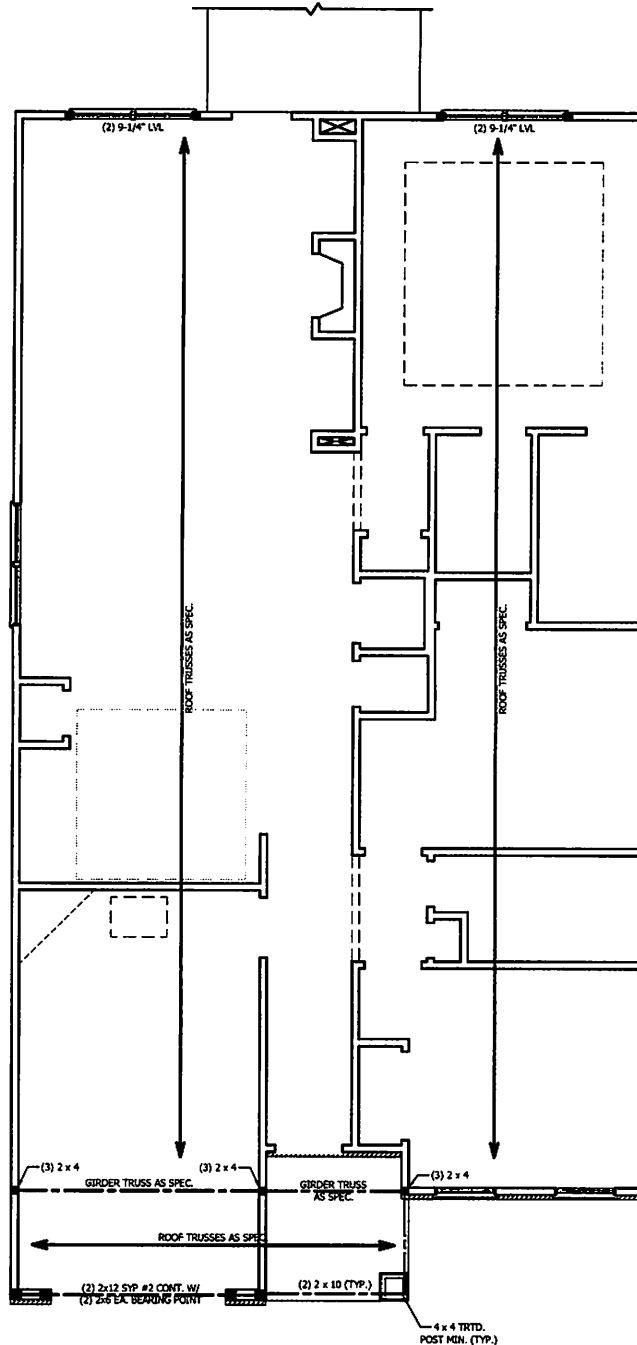
FRONT PORCH  
AND BEDROOM #2  
WINDOW  
ELEVATION B



FRONT PORCH  
AND BEDROOM #2  
WINDOW  
ELEVATION C



SCALE NOTE: 18x24 PRINTS ARE TO SCALE AS NOTED.  
11x17 PRINTS ARE NOT TO SCALE



**RENAISSANCE**  
RESIDENTIAL DESIGN, INC.  
RALEIGH, NC 27612  
(919) 848-4128  
WWW.RENOCAD.COM

RENAISSANCE RESIDENTIAL DESIGN, INC. RESERVES THE RIGHT TO MAKE MODIFICATIONS TO THESE PLANS AND SPECIFICATIONS, AND TO MAKE ANY CHANGES NECESSARY TO COMPLY WITH THE REQUIREMENTS OF ANY APPLICABLE CODES OR REGULATIONS. THESE CHANGES ARE FOR THE PURPOSE OF CORRECTING AN ARCHITECTURAL CONCEPT ONLY.

**WEAVER**  
**HOMES**  
3545 Weaver Parkway, Raleigh, NC 27612  
919-848-2110 • 919-848-2199  
www.weaverhomes.com

WEAVER HOMES RESERVES THE RIGHT TO MAKE MODIFICATIONS TO THESE PLANS AND SPECIFICATIONS, AND TO MAKE ANY CHANGES NECESSARY TO COMPLY WITH THE REQUIREMENTS OF ANY APPLICABLE CODES OR REGULATIONS. THESE CHANGES ARE FOR THE PURPOSE OF CORRECTING AN ARCHITECTURAL CONCEPT ONLY.

**WEAVER HOMES**  
**CAROLINA COLLECTION**  
**LEYLAND DRIVE LEFT**

DATE: JUNE 15, 2020  
REV  
SCALE: 1/4" = 1'-0"  
DRAWN BY: WO  
ENGINEERED BY:  
REVIEWED BY:

SECOND FLOOR  
FRAMING PLAN

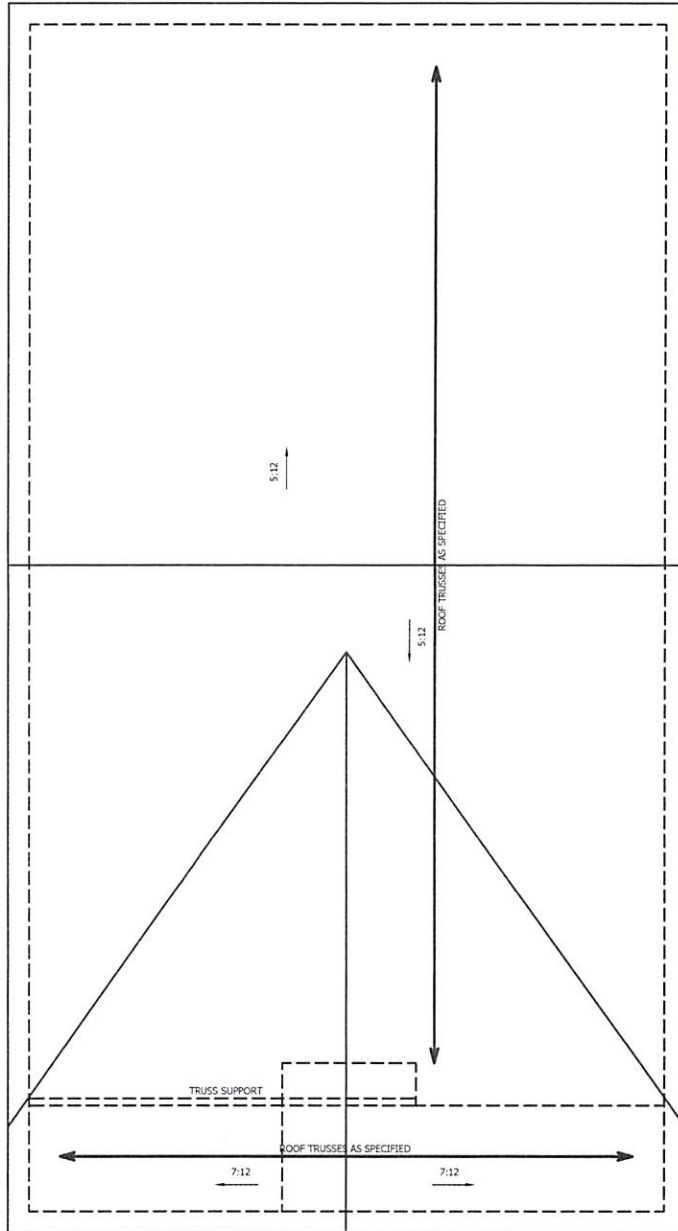
S-2

**ATTIC VENT CALCULATION:**

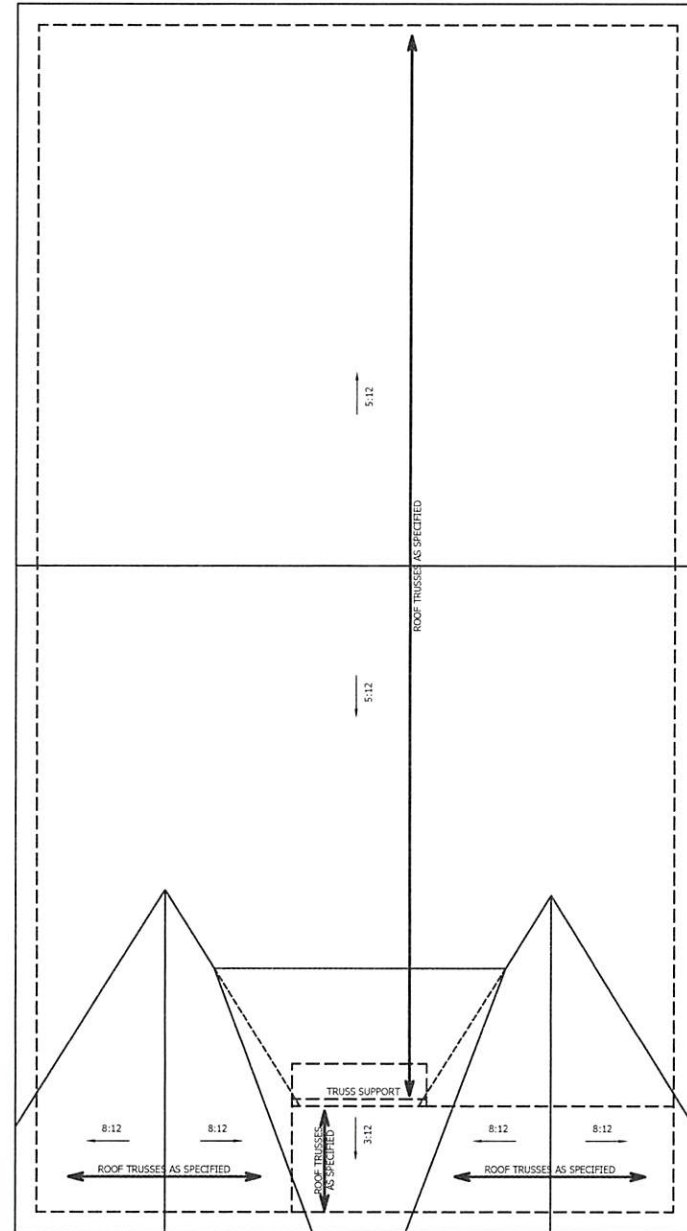
1824 SQ. FT. OF ATTIC DIVIDED BY 150 REQUIRES 12.2 SQ. FT. OF NET FREE VENTILATING AREA (MIN.).

**STRUCTURAL NOTES:**

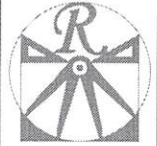
1. ALL FRAMING LUMBER TO BE #2 SPF (UNO).
2. HIP SPLICES ARE TO BE SPACED A MIN. OF 8'-0". FASTEN MEMBERS WITH THREE ROWS OF 12d NAILS @ 16" O.C. (TYP.)
3. STICK FRAME OVER-FRAMED ROOF SECTIONS W/ 2 x 8 RIDGES, 2 x 6 RAFTERS @ 16" O.C. AND FLAT 2 x 10 VALLEYS OR USE VALLEY TRUSSES.
4. FASTEN FLAT VALLEYS TO RAFTERS OR TRUSSES WITH SIMPSON H2.5A HURRICANE TIES @ 32" O.C. MAX. PASS HURRICANE TIES THROUGH NOTCH IN ROOF SHEATHING. EACH RAFTER IS TO BE FASTENED TO THE FLAT VALLEY WITH A MIN. OF (6) 12d TOE NAILS.
5. REFER TO SECTION R802.11 OF THE 2018 NIRC FOR REQUIRED UPLIFT RESISTANCE AT RAFTERS AND TRUSSES.



**ELEVATION C**



**ELEVATION B**



**RENAISSANCE**  
RESIDENTIAL DESIGN, INC.

RALEIGH, NC 27612  
(919) 648-4128

WWW.HRDCAROLINA.COM

The art of rendering the way you see the world.

RENAISSANCE RESIDENTIAL DESIGN, INC. RESERVES THE RIGHT TO MAKE MODIFICATIONS TO LOADS, DIMENSIONS, MATERIALS, AND SPECIFICATIONS WITHOUT NOTICE. THESE DRAWINGS ARE FOR THE PURPOSES OF CONVEYING AN ARCHITECTURAL CONCEPT ONLY.

RENAISSANCE RESIDENTIAL DESIGN, INC. HEREBY EXPRESSLY DISCLAIMS ITS COMMON LAW COPYRIGHT AND OTHER PROPERTIES CREATED BY THESE PLANS. THESE PLANS AND DIMENSIONS ARE NOT TO BE REPRODUCED, CHANGED, COPIED IN ANY FORM OR MANNER WITHOUT THE WRITING PERMISSION OF RENAISSANCE RESIDENTIAL DESIGN, INC. SUCH ARE TO BE ADVANCED TO ANY THIRD PARTY WITHOUT FIRST OBTAINING WRITTEN PERMISSION AND CONSENT.

**WEAVER**  
**HOMES**  
2108 BUCKINGHAM DRIVE, SUITE 101  
RANDLEMAN, NC 27614  
919.489.2110 • 919.489.2100  
WWW.WEAVERHOMES.COM

THESE DRAWINGS ARE NOT TO BE USED FOR CONSTRUCTION WITHOUT THE WRITING PERMISSION OF RENAISSANCE RESIDENTIAL DESIGN, INC. SUCH ARE TO BE ADVANCED TO ANY THIRD PARTY WITHOUT FIRST OBTAINING WRITTEN PERMISSION AND CONSENT.

**WEAVER HOMES**  
**CAROLINA COLLECTION**  
**LEYLAND DRIVE LEFT**

DATE: JUNE 15, 2020

REV: \_\_\_\_\_

SCALE: 1/4" = 1'-0"

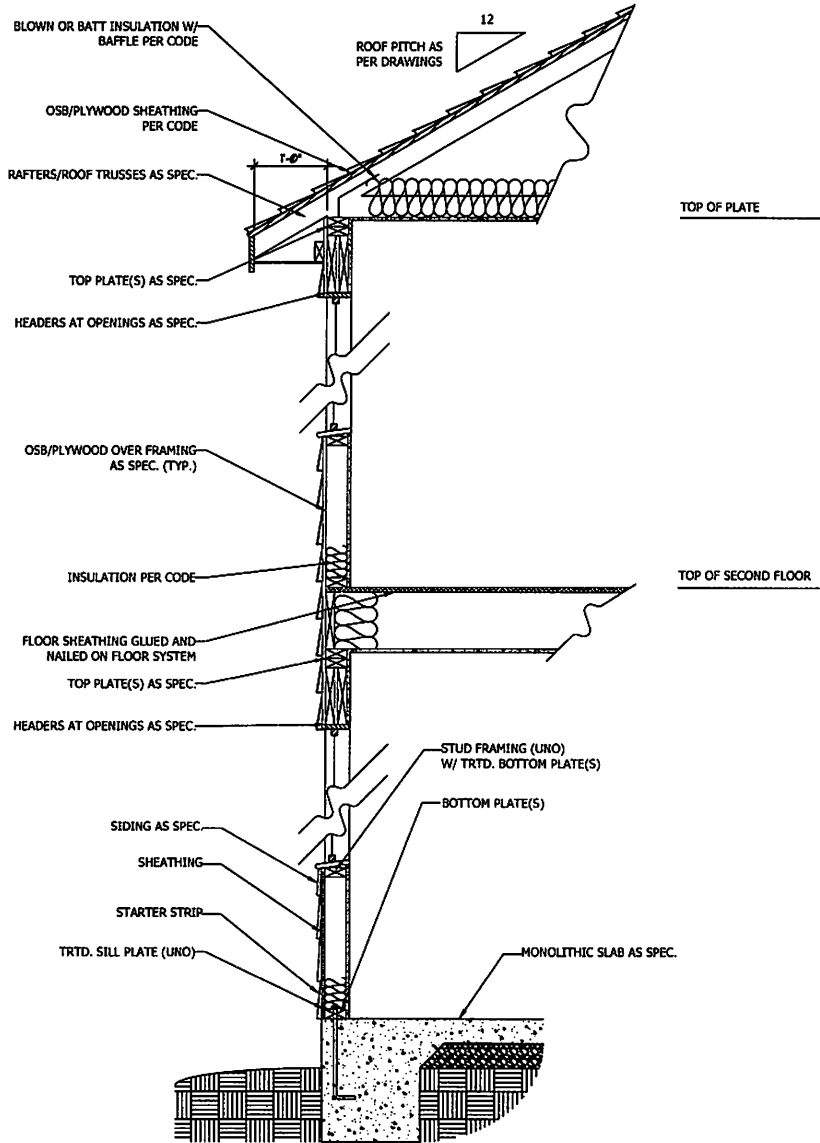
DRAWN BY: WO

ENGINEERED BY: \_\_\_\_\_

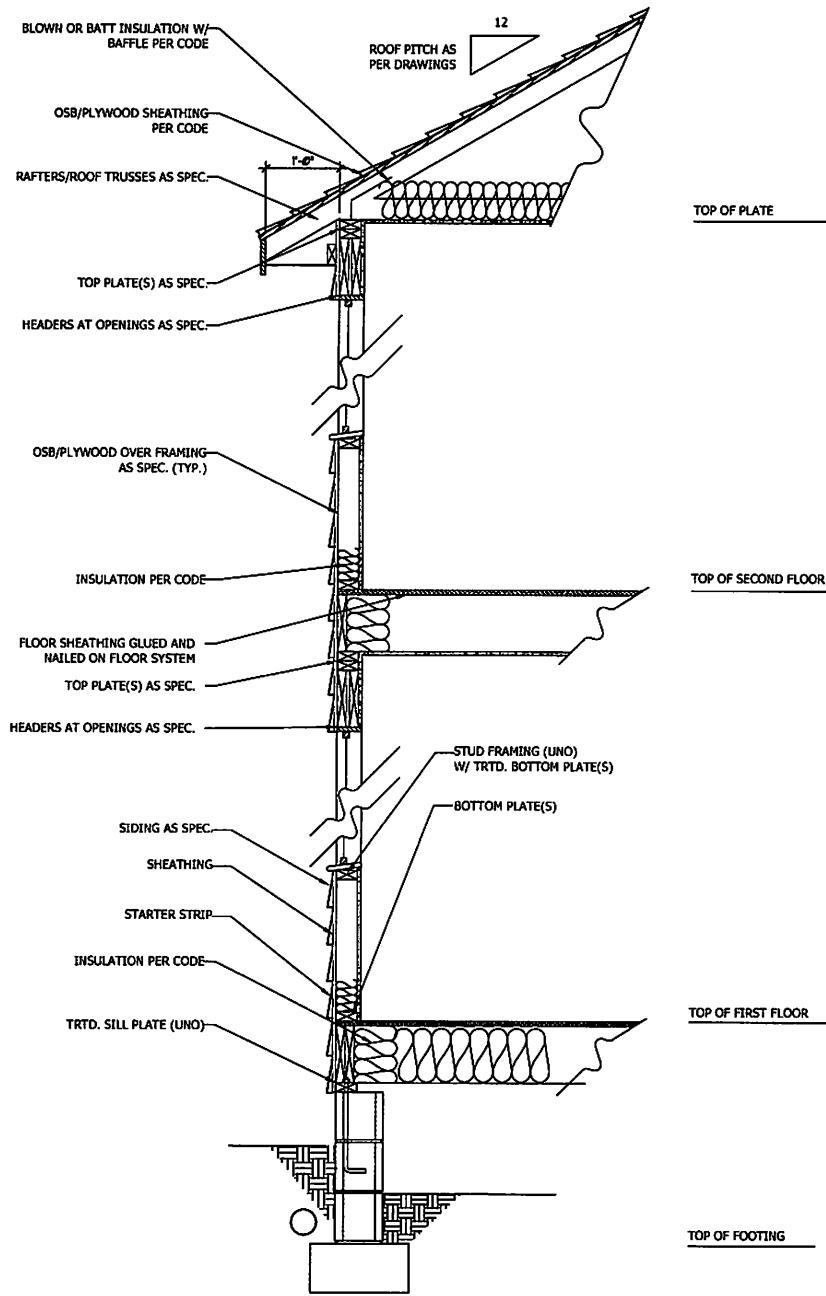
REVIEWED BY: \_\_\_\_\_

ROOF PLANS  
ELEVATIONS B&C

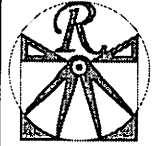
**S-4**



**WALL SECTION W/ SLAB**  
W/ STD. SIDING SHOWN (NTS)



**WALL SECTION W/ CRAWL SPACE**  
W/ STD. SIDING SHOWN (NTS)



**RENAISSANCE**  
RESIDENTIAL DESIGN, INC.  
RALEIGH, NC 27612  
(919) 848-4128  
WWW.RENDESIGN.COM

THE SET OF DRAWINGS IS YOUR SOLE PROPERTY. IT IS TO BE USED ONLY FOR THE PROJECT AND SITE SPECIFICALLY IDENTIFIED HEREON. ANY REUSE, REPRODUCTION, OR MODIFICATION OF THESE DRAWINGS WITHOUT THE WRITTEN CONSENT OF RENAISSANCE RESIDENTIAL DESIGN, INC. IS STRICTLY PROHIBITED. THE USER ASSUMES ALL LIABILITY FOR THE ACCURACY AND COMPLETENESS OF THE INFORMATION PROVIDED HEREON.

RENAISSANCE RESIDENTIAL DESIGN, INC. IS NOT PROVIDING ARCHITECTURAL SERVICES IN ANY STATE WHERE ARCHITECTURE IS REGULATED BY LAW. ANY SUCH SERVICES ARE PROVIDED BY AN ARCHITECT IN THE STATE OF NORTH CAROLINA. ANY SUCH SERVICES ARE PROVIDED BY AN ARCHITECT IN THE STATE OF NORTH CAROLINA.

**WEAVER**  
HOMES  
3145 W. Weaver Parkway, Raleigh, NC 27612  
www.weaverhomes.com

WEAVER HOMES IS AN EQUAL OPPORTUNITY HOME BUILDER. WE DO NOT DISCRIMINATE ON THE BASIS OF RACE, COLOR, RELIGION, SEX, NATIONAL ORIGIN, ANCESTRY, AGE, OR MARITAL STATUS. WE DO NOT DISCRIMINATE ON THE BASIS OF HANDICAP. IF YOU ARE HANDICAPPED AND NEED SPECIAL ACCOMMODATIONS IN ORDER TO PARTICIPATE IN OUR SALES PROCESS, PLEASE CONTACT US AT 919-848-4128.

**WEAVER HOMES**  
CAROLINA COLLECTION  
LEYLAND DRIVE LEFT

DATE: JUNE 15, 2020

REV: \_\_\_\_\_

SCALE: 1/4" = 1'-0"

DRAWN BY: WJ

ENGINEERED BY: \_\_\_\_\_

REVIEWED BY: \_\_\_\_\_

TYPICAL WALL SECTIONS

SECTIONS

D-1