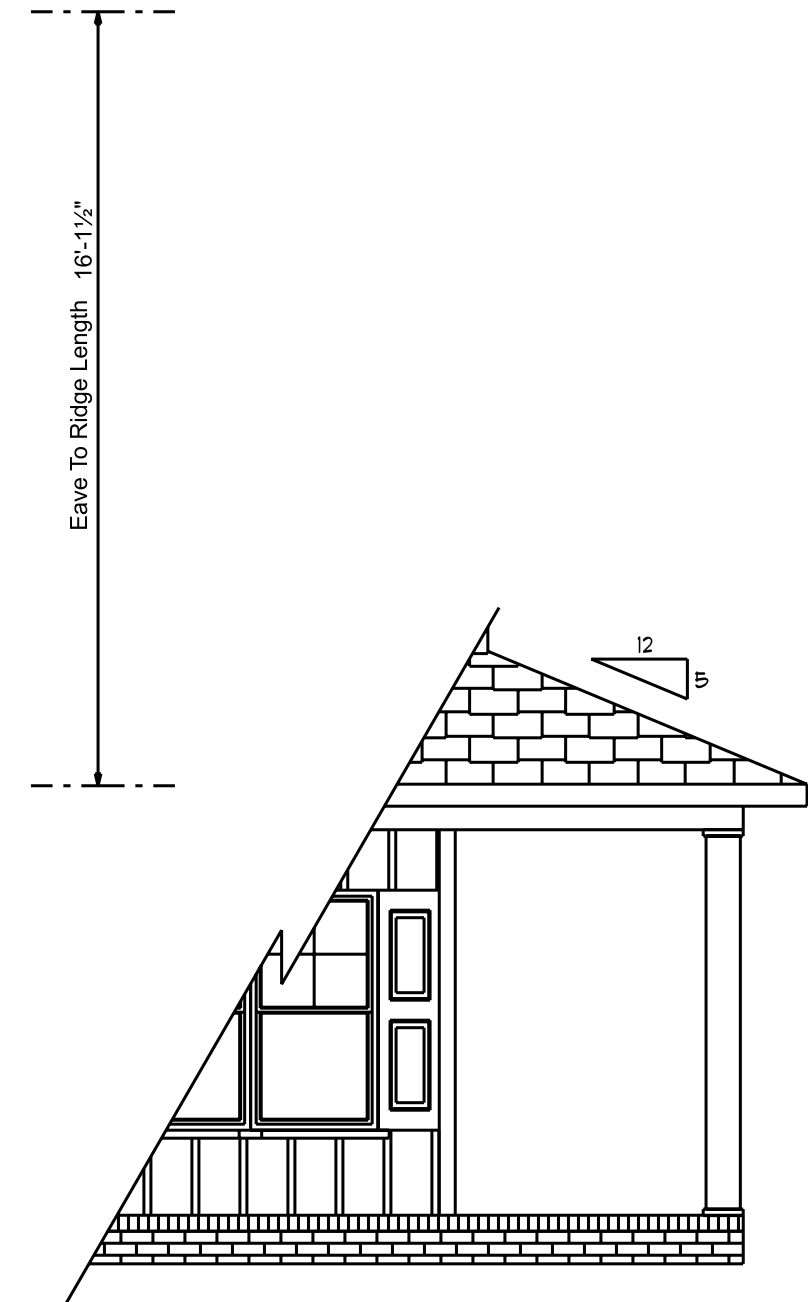


Continuous Ridge Vent



Optional  
3rd Car

Front Elevation  
Scale: 1/4" = 1'0"



Optional  
Wrap-Around  
Porch

**ATTIC VENTILATION**

1266 SQ.FT. OF ATTIC / 150 = 8.44 SQ.FT.  
TOTAL NET FREE VENTILATING AREA.

VENTILATION MAY BE REDUCED 50%  
PROVIDED AT LEAST 50 PERCENT AND  
NOT MORE THAN 80 PERCENT OF THE  
REQUIRED VENTILATING AREA IS  
PROVIDED BY VENTILATORS LOCATED IN  
THE UPPER PORTION OF THE SPACE TO  
BE VENTILATED AT LEAST 3'-0" ABOVE  
EAVE OR CORNICE VENTS WITH THE  
BALANCE OF THE REQUIRED VENTILATION  
PROVIDED BY EAVE OR CORNICE VENTS.

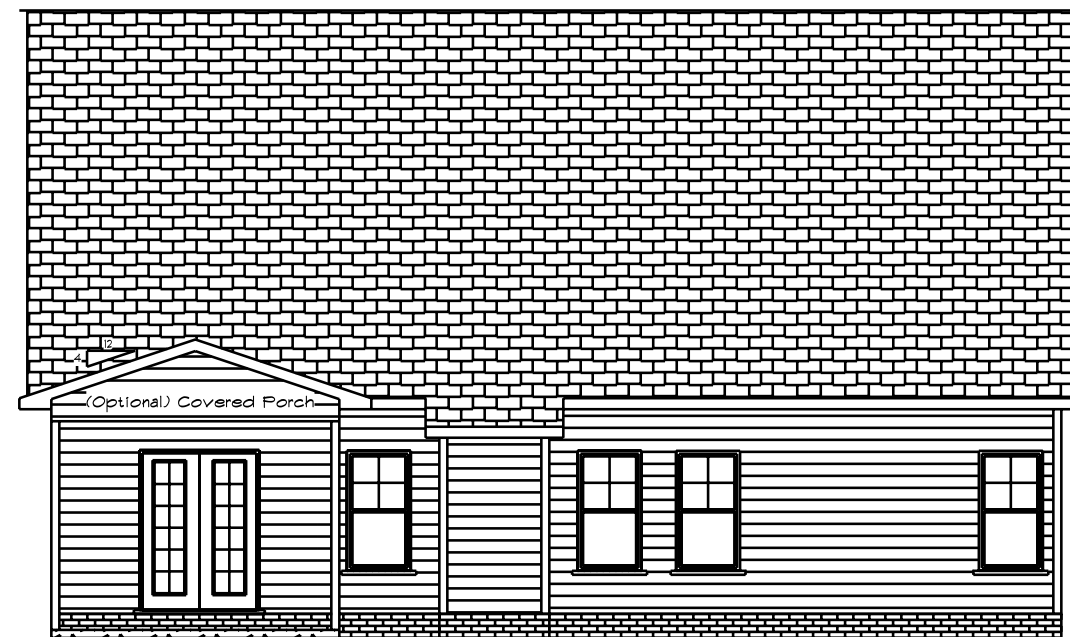
This Plan Is Designed To Meet  
The Requirements Of The 2018  
Residential Building Code

1/2" Continuous Wood Sheathing On  
All exterior Walls  
Exterior Finish Is Vinyl Siding, Vinyl  
Shakes Or Manufactured Stone

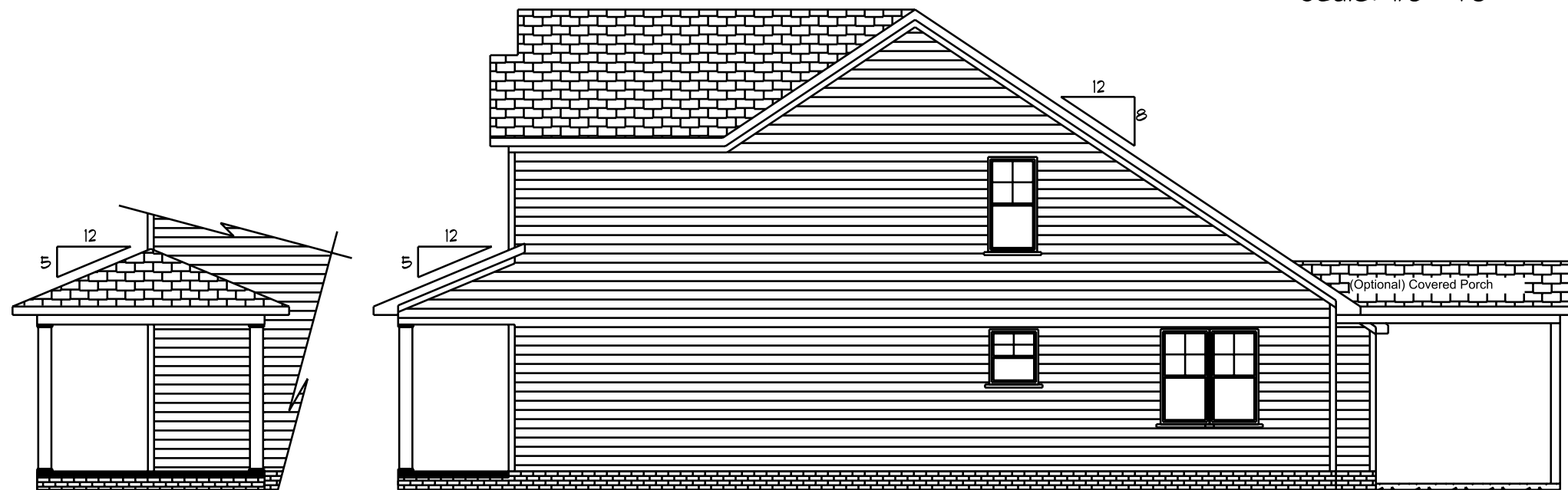
**Fenestration And Insulation Requirements**

Climate Zone	3A	4A
Fenestration U-Factor	0.35	0.35
Glazed Fenestration SHGC	0.3	0.3
Minimum Ceiling R-Value	30	30/38
Minimum Wall R-Value	13	15
Minimum Slab R-Value	0	10
Minimum Floor R-Value	19	19
Glazing Pressure	+/-2 psf	+/-2 psf

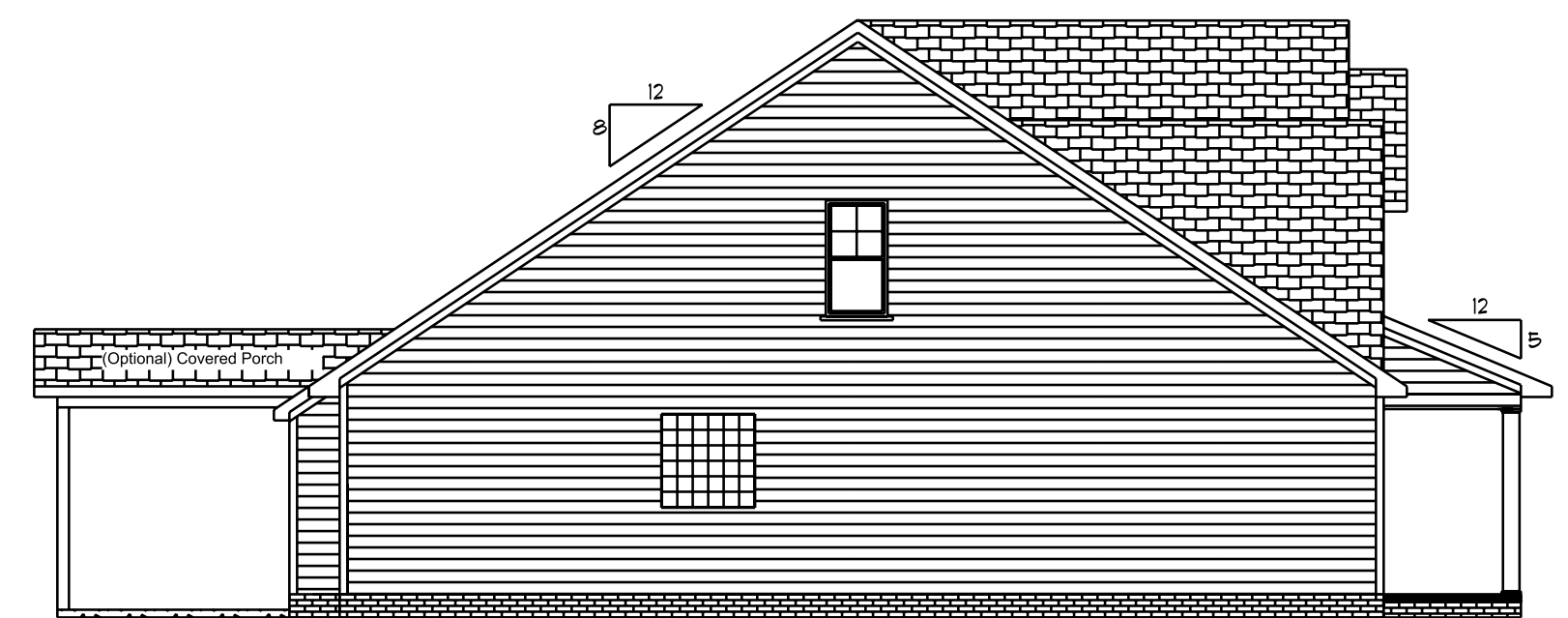
Total Glazing Area = 255.68 Sq.Ft.



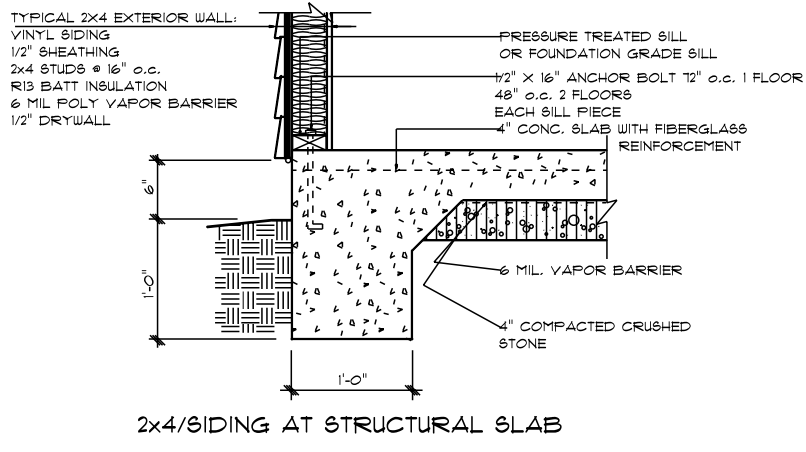
Rear Elevation  
Scale: 1/8" = 1'0"



Right Elevation  
Scale: 1/8" = 1'0"



Left Elevation  
Scale: 1/8" = 1'0"



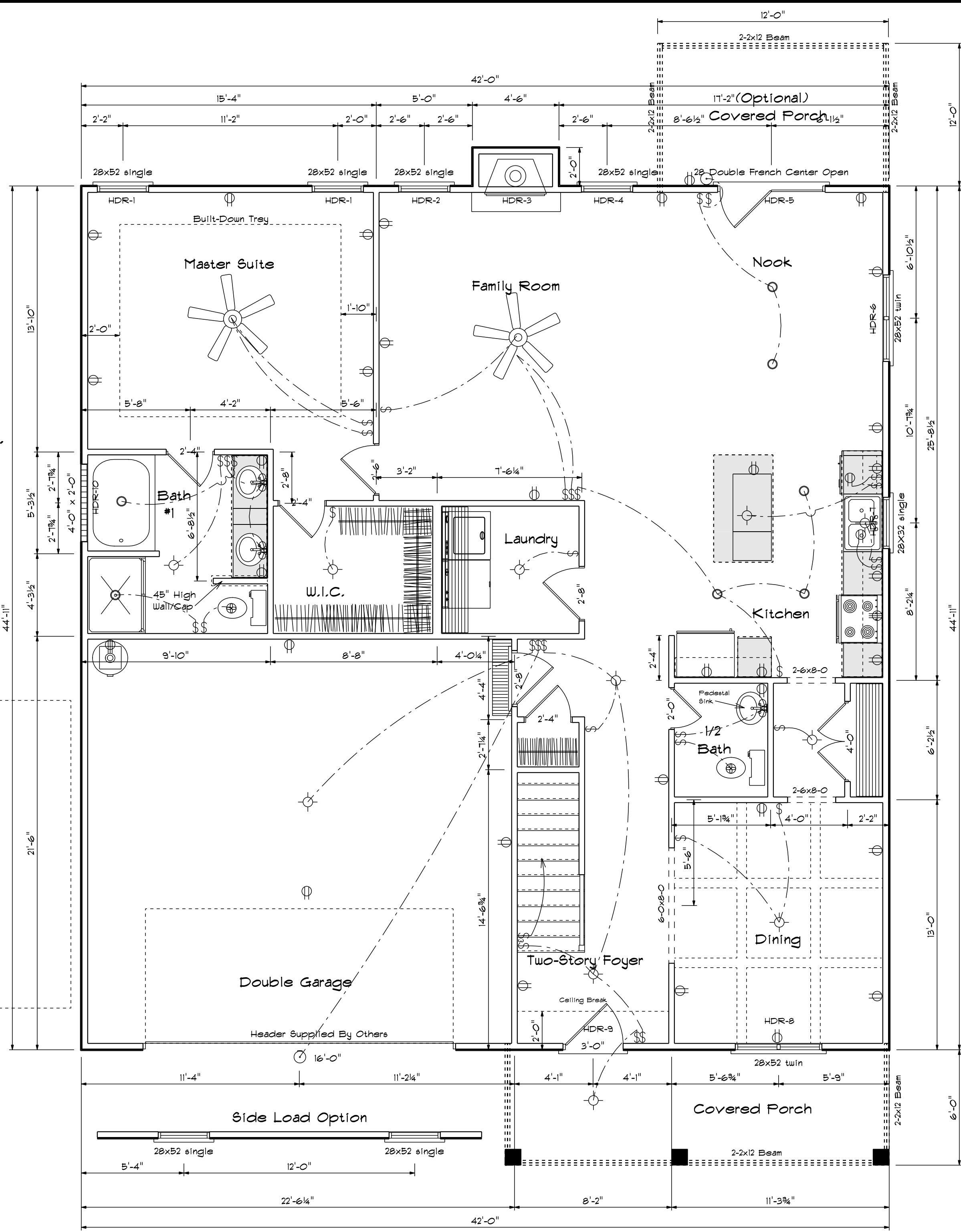
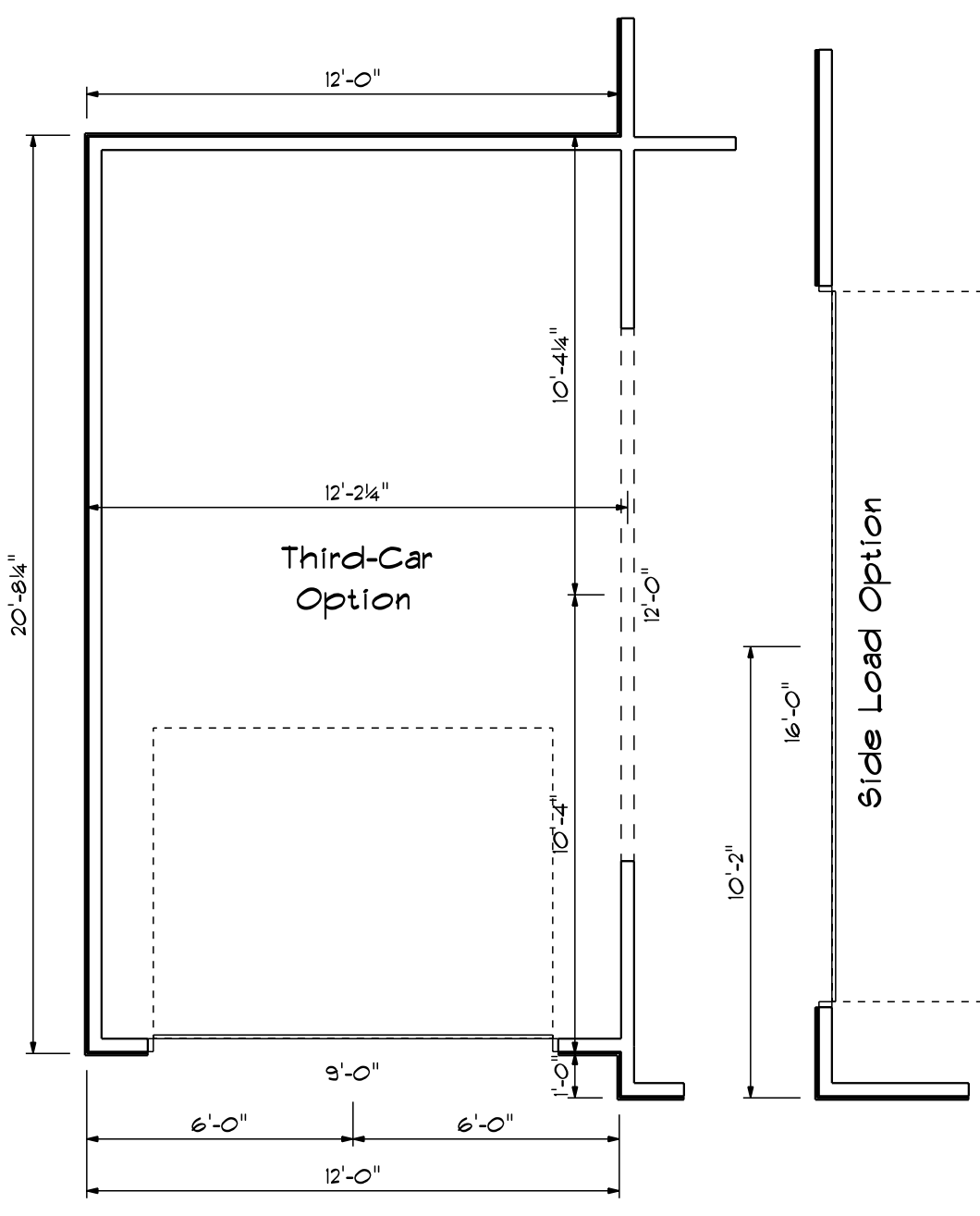
All Headers Double #2 Pine With Double Jacks When Length Over 6'-0"

HDR	Size	Length
1	2x10	3' 3 1/2"
2	2x12	3' 3 1/2"
3	2x10	4' 3 1/2"
4	2x10	2' 3 1/2"
5	2x10	5' 7 1/2"
6	2x10	5' 7 1/2"
7	2x10	3' 3 1/2"
8	2x10	5' 7 1/2"
9	2x10	3' 3 1/2"
10	2x10	4' 3 1/2"

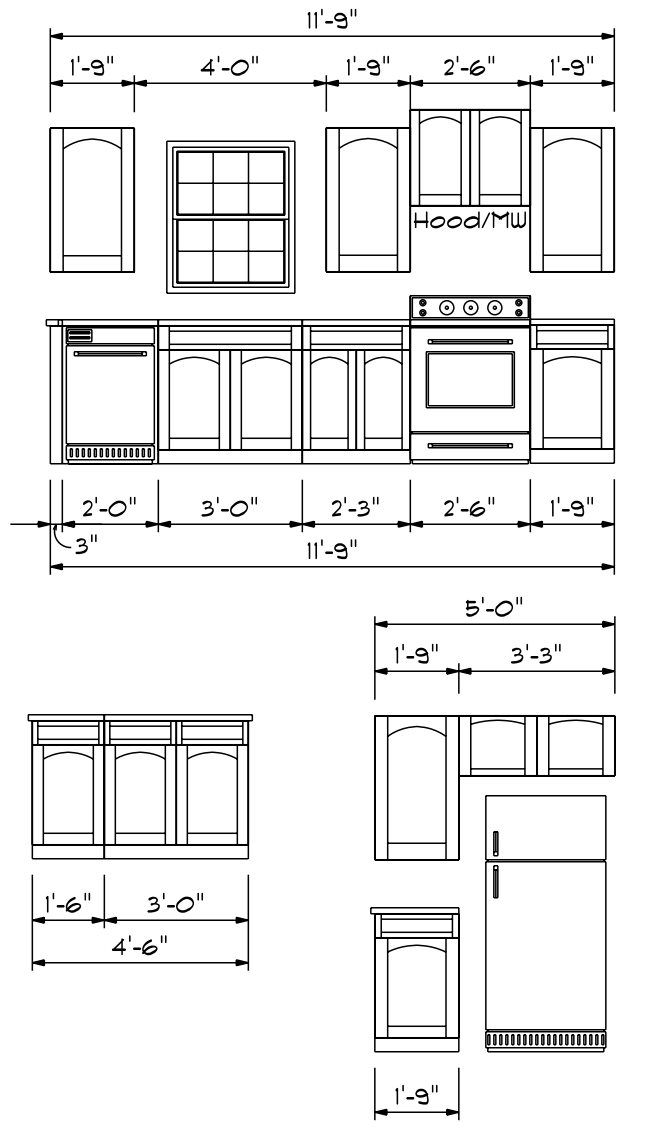
Note: ALL EXTERIOR WALLS TO BE SHEATHED WITH 7/16 OSB For Bacewall Support.

1st Floor Glazing Area = 133.07 Sq.Ft.

PRODUCT CODE	SIZE	COUNT	WIDTH	HEIGHT
60X80 LH ENTRY - 2 SL	5'-0"	1	5'-0"	6'-9 1/2"
28X32 single	2'-8" x 3'-2"	1	2'-8"	3'-2"
28X52 single	2'-8" x 5'-2"	4	2'-8"	5'-2"
28X52 twin	5'-4" x 5'-2"	1	5'-4"	5'-2"
4.0x2.0 Glass Block	4'-0" x 2'-0"	1	4'-0"	2'-0"



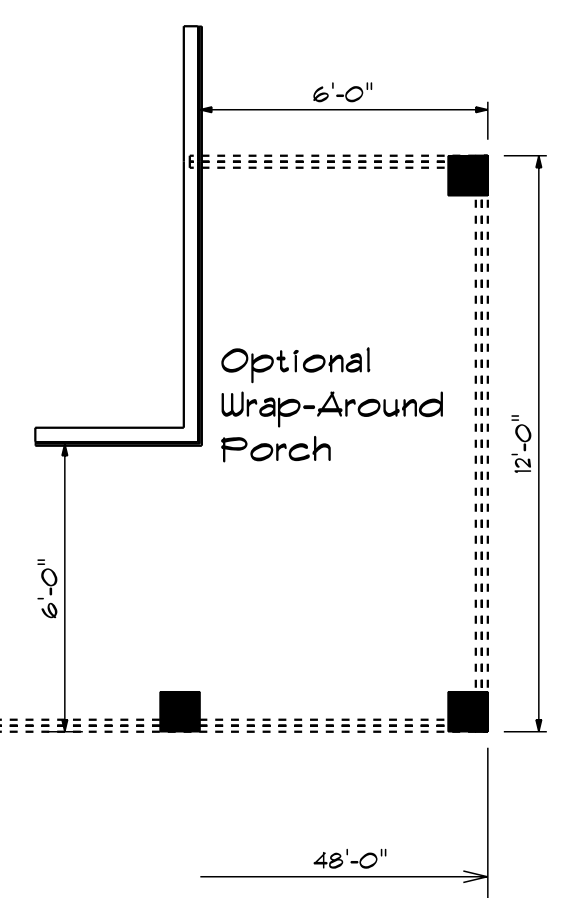
### Kitchen Cabinets



### First Floor Plan

#### Areas

First Floor	1412
Second Floor	840
<b>Total Heated</b>	<b>2252</b>
With Optional Bdrm #2	2310
Garage	479
Front Porch	115
Optional Third Car Garage	240
Optional Rear Covered Porch	144

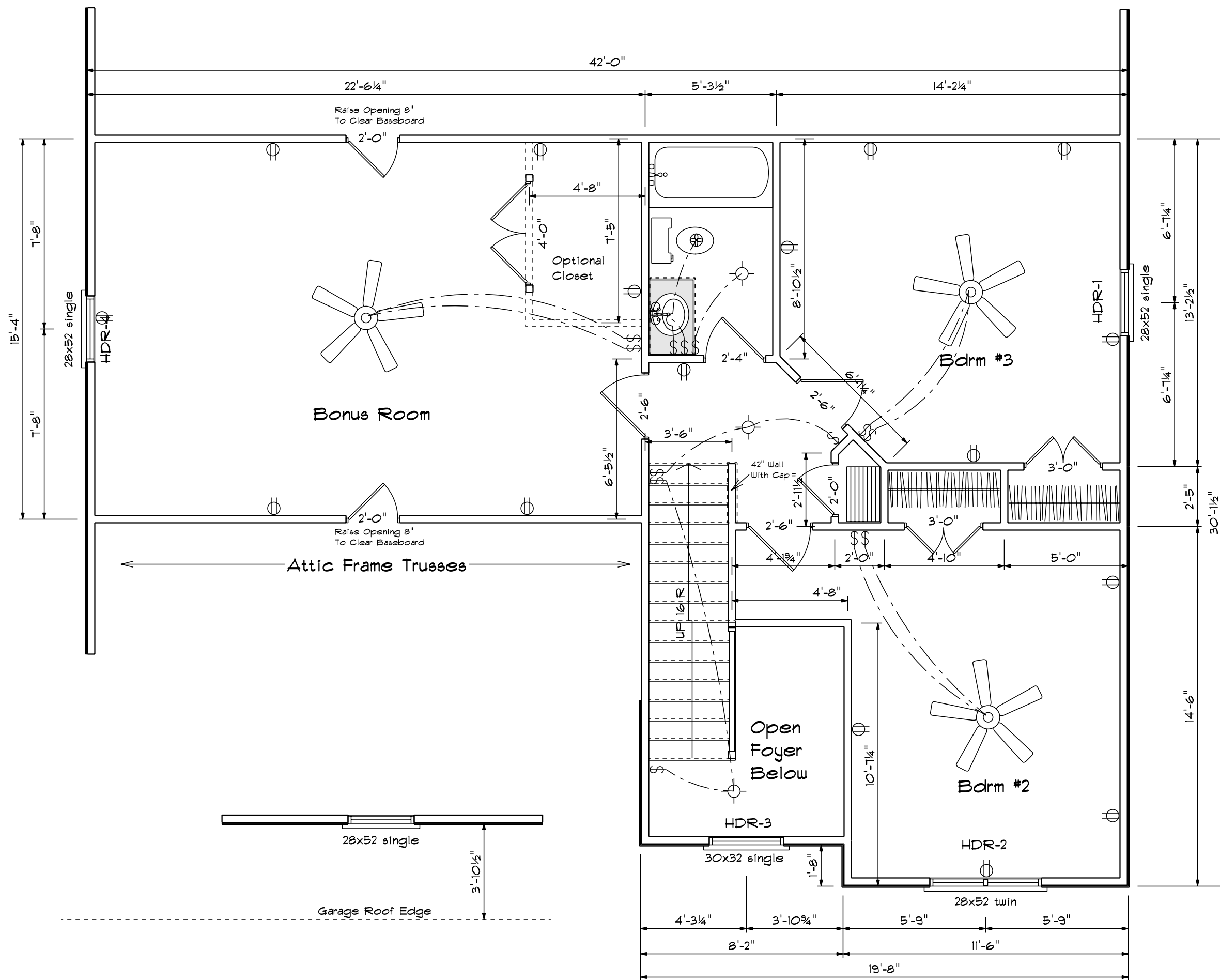


All Headers Double #2  
Fins With Double Jacks  
When Length Over 6'-0"

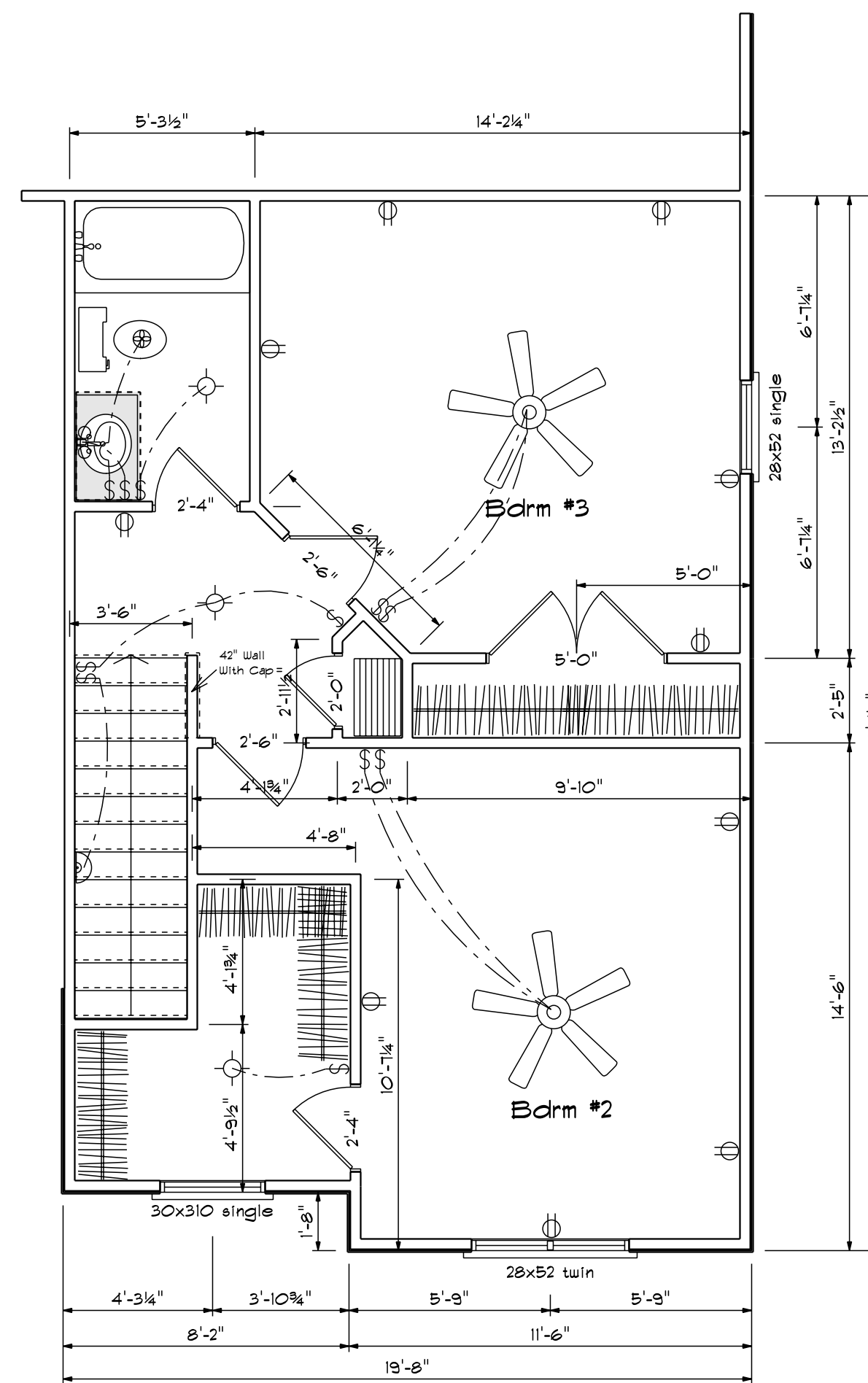
HDR	Size	Length
1	2x10	3' 3 1/2"
2	2x12	5' 7 1/2"
3	2x10	3' 3 1/2"
4	2x10	3' 3 1/2"

FIRST FLOOR OPENING SCHEDULE			
PRODUCT CODE	SIZE	HINGE	COUNT
32X80 COLONIAL A 1	2'-8"	R	1
36X80 Entry	3'-0"	L	1
28 Double French Center Open	5'-4"	NL	1
108X84 - 4 PANEL - 2 WINDOW (Optional)	9'-0"	U	1
192X84 - 8 PANEL - 4 WINDOW	16'-0"	U	2
2-6 Door Unit	2'-6"	L	1
2-0 Door Unit	2'-0"	L	1
2-4 Door Unit	2'-4"	L	1
2-4 Door Unit	2'-4"	R	2
2-8 Door Unit	2'-8"	L	1
4-0 Double Hung Door Unit	4'-0"	LR	1
28X32 single	2'-8" x 3'-2"	N	1
28x52 single	2'-8" x 5'-2"	N	4
28x52 twin	4'-6" x 5'-2"	NN	2
1-0x4-0 glass block	4'-0" x 2'-0"	N	1

SECOND FLOOR OPENING SCHEDULE			
PRODUCT CODE	SIZE	HINGE	COUNT
2-0 Door Unit	2'-0"	R	1
2-6 Door Unit	2'-6"	R	1
2-0 Door Unit	2'-0"	R	1
2-0 Door Unit	2'-0"	L	1
2-4 Door Unit	2'-4"	L	1
2-6 Door Unit	2'-6"	R	1
2-6 Door Unit	2'-6"	L	1
3-0 Double Hung Door Unit	3'-0"	LR	2
4-0 Double Hung Door Unit	4'-0"	LR	1
28x52 single	2'-8" x 5'-2"	N	1
28x52 single	2'-8" x 5'-2"	N	2
28x52 twin	4'-6" x 5'-2"	NN	1
30x32 single	3'-0" x 3'-2"	N	1



Second Floor Plan



(Optional) Bdrm #2  
+ 58 Sq.Ft.

Bass Designs  
2121 Chimney Pt.  
Linden N.C. 28356  
910-864-9310

DATE 6/2/2020

REVISED

DRAWING\*

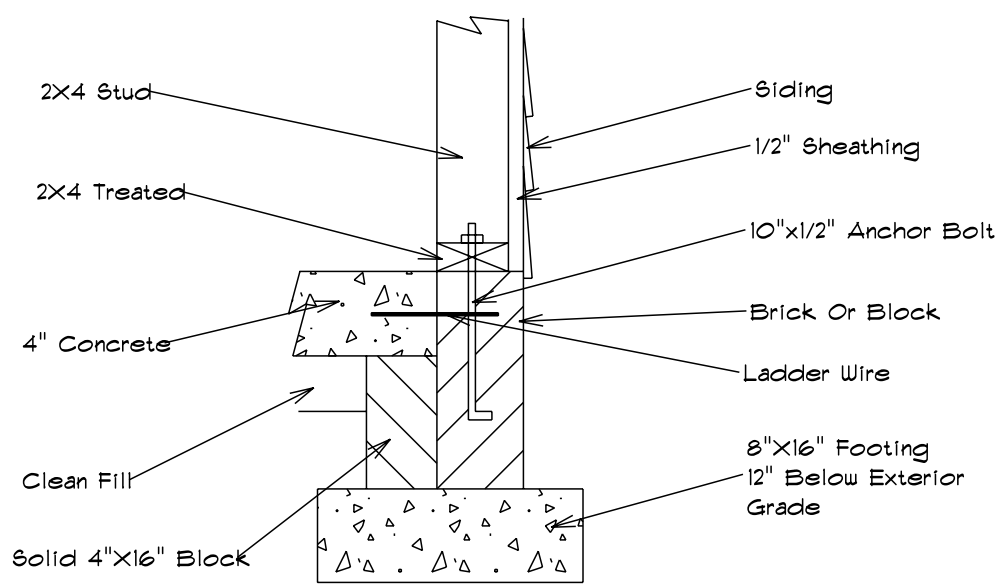
SCALE 1/4"

DRAWN BY

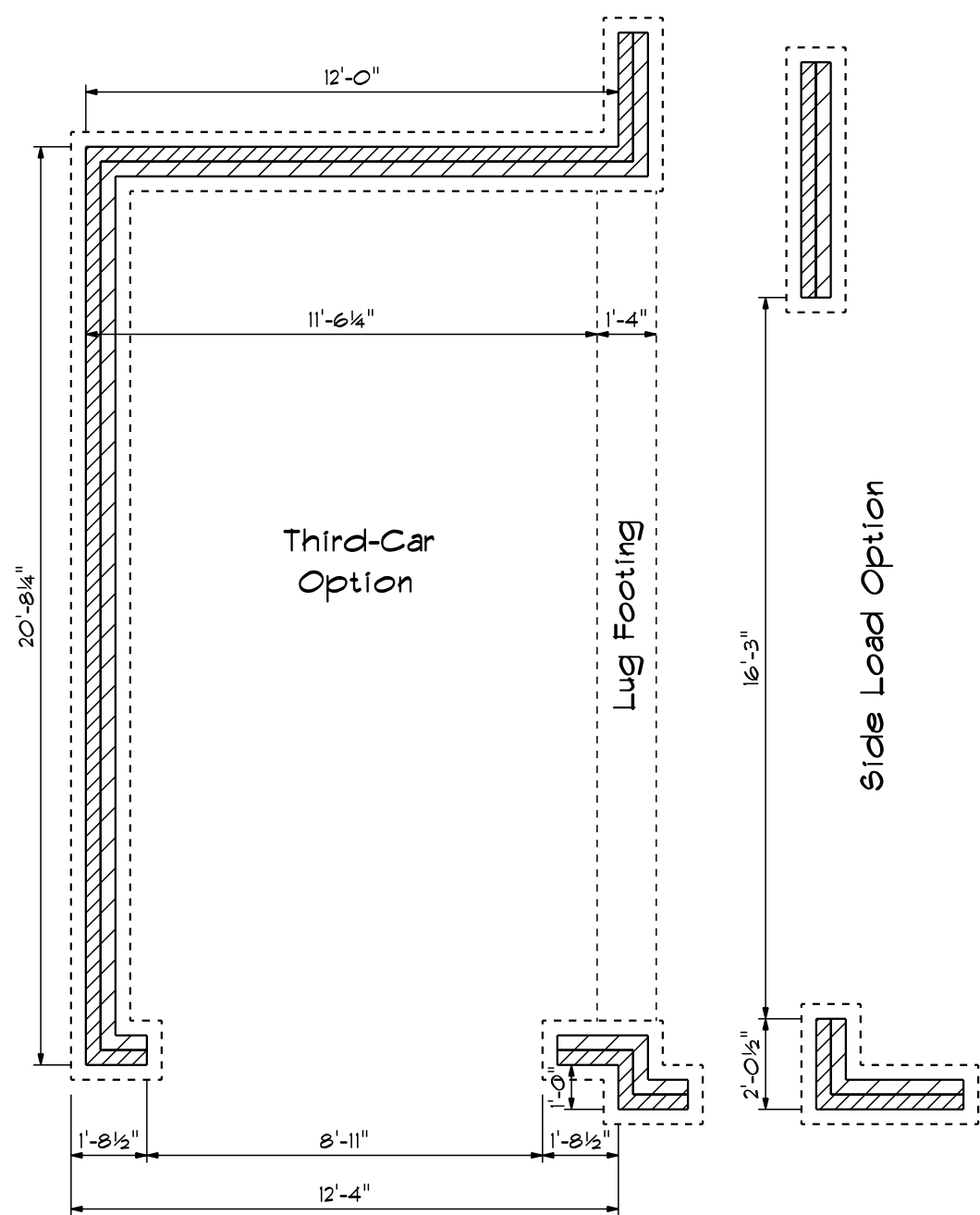
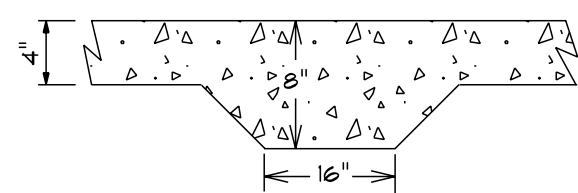
APPROVED

The Stockton XL

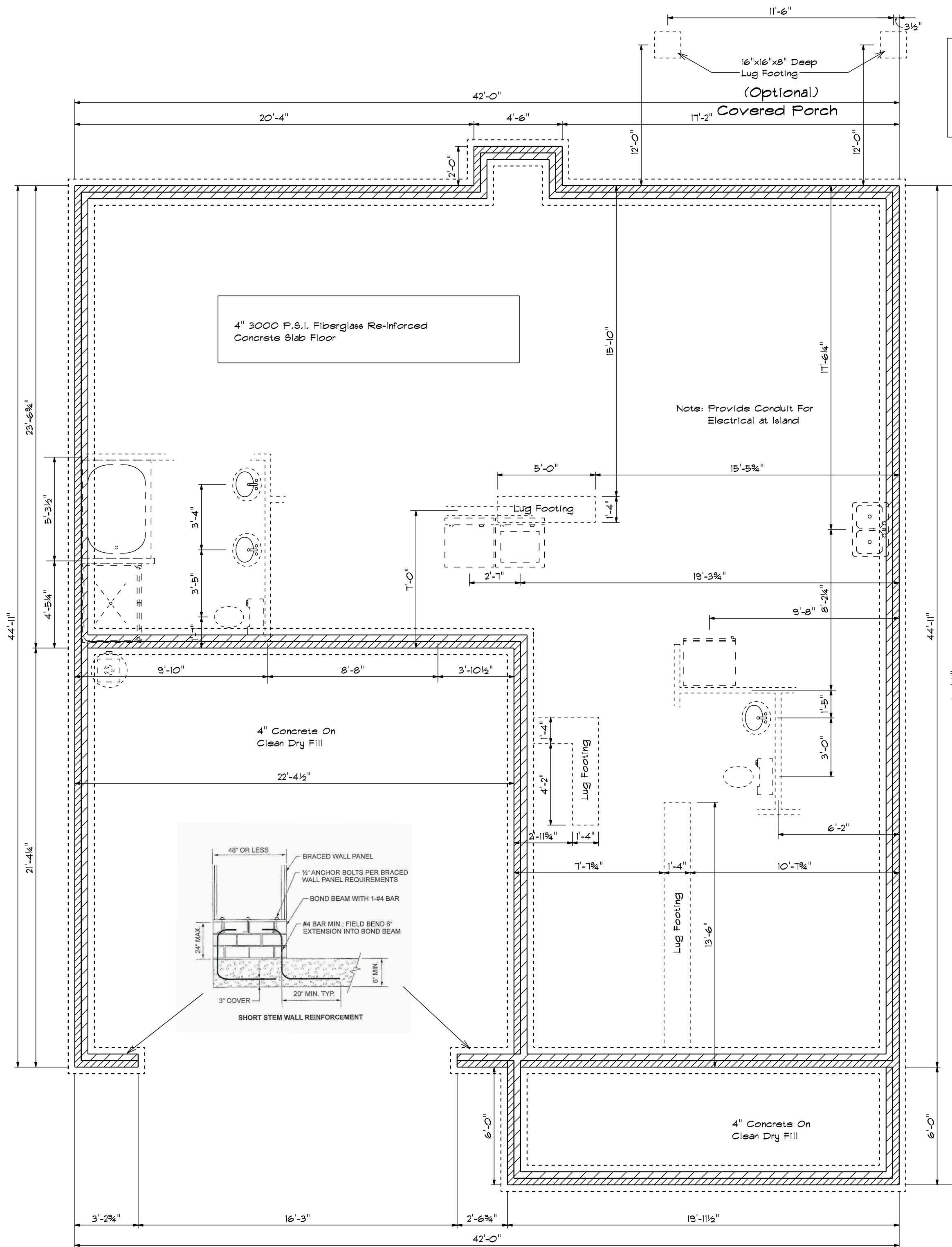
**Foundation Detail Siding**



**Lug Footing Detail**

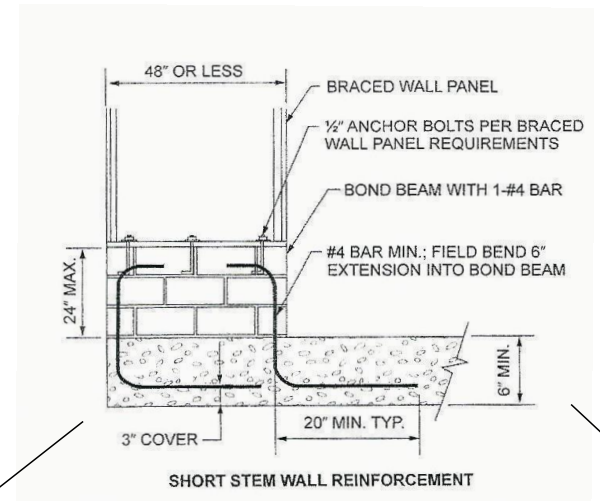


**Foundation Plan**



**Foundation Anchorage**  
 The Wood Sole Plats At Exterior Walls On Monolithic Slabs Shall Be Anchored To The Foundation With Anchor Bolts Spaced A Maximum Of 6' On Center And Not More Than 12" From The Corner. Anchor Bolts Shall Be At Least 1/2" In Diameter And Extend A Minimum Of 1" Into Concrete.

This Plan is Designed To Meet The Requirements Of The 2012 Residential Building Code



Base Designs  
 2727 Chimney Pt.  
 Linden N.C. 28356  
 910-864-1253

DATE 6/6/2020  
 REVISION  
 DRAWING\*

SCALE 1/4"  
 DRAWN BY  
 APPROVED

**The Stockton XL**