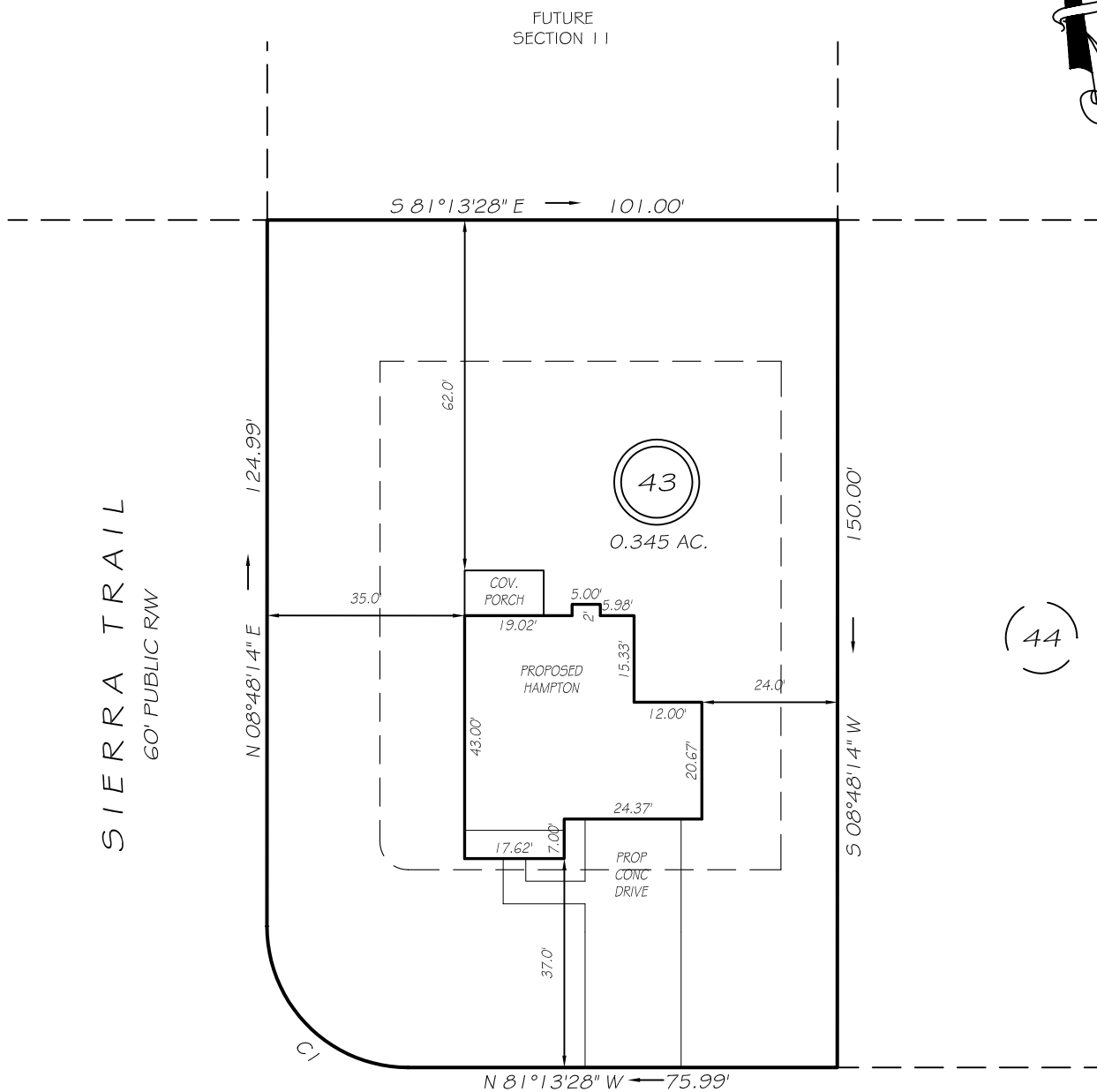


I, MICHAEL P. GRIFFIN, certify that under my direction and supervision this map was drawn from an actual field survey; that the error of closure of the survey as calculated by coordinates is 1: 10,000+; that the area shown hereon was calculated by coordinates.

Witness my hand and seal this day of MONTH 2020.

BK 2006 PG 477-478
HARNETT CO. REGISTRY



SOUTH DAKOTA COURT
50' PUBLIC R/W

SETBACKS

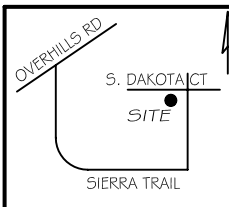
FRONT	35'
REAR	25'
SIDE	10'
CORNER SIDE	20'

C1 R=25.00' L=39.28' S36°12'37"E 35.36'

PRELIMINARY
NOT FOR RECORDATION,
SALES OR CONVEYANCE

LEGEND

EIP	EXISTING IRON PIPE	FES	FLARED END SECTION
IPS	IRON PIPE SET	WM	WATER METER
R/W	RIGHT OF WAY	CO	CLEAN OUT
N/F	NOW OR FORMERLY	FH	FIRE HYDRANT
EIS	EXISTING IRON STAKE	CB	CATCH BASIN



GRIFFIN LAND SURVEYING, INC.

P. O. BOX 148
FUQUAY-VARINA, NC 27526
(919) - 567-1963

PLOT PLAN
FOR
A & G RESIDENTIAL
SIERRA VILLAGE
AT OVERHILLS
LOT 43

SOUTH DAKOTA COURT
NORTH CAROLINA
HARNETT CO. ANDERSON CREEK TWSHP

DRAWN BY NMF DATE _____

CHECKED BY MPG SCALE **1" = 30'**