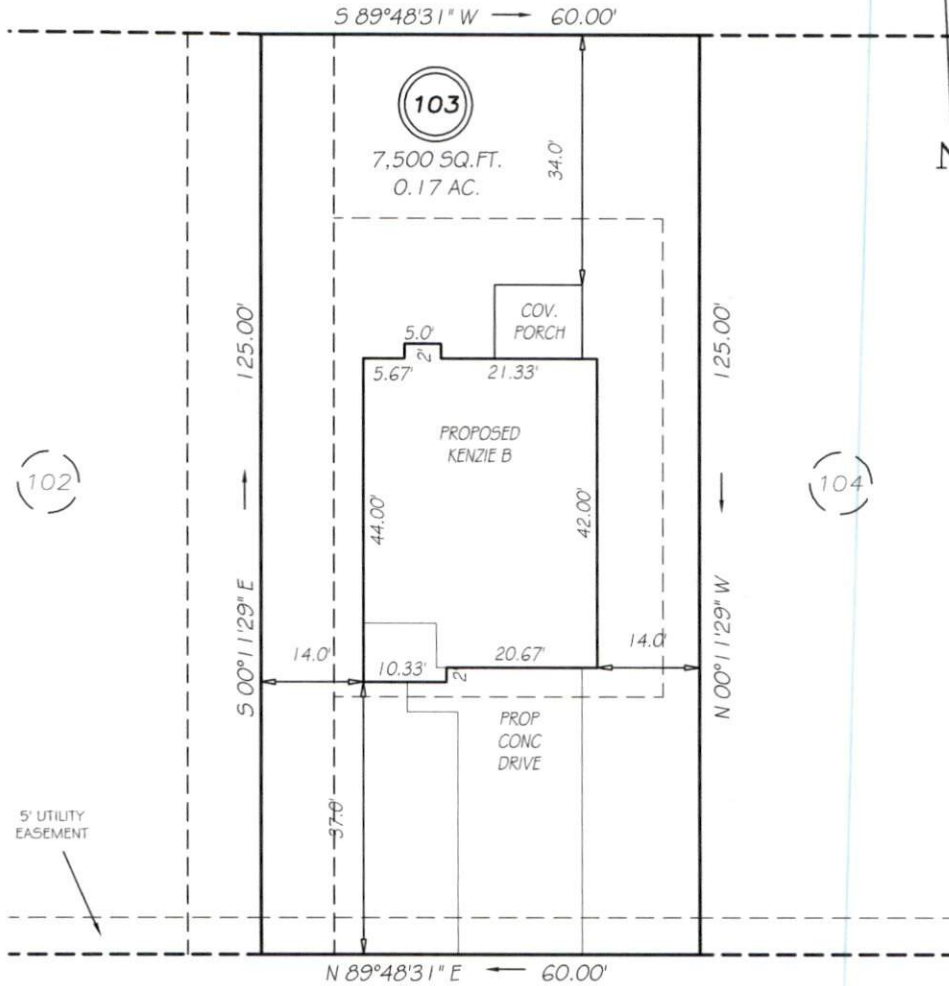


I, MICHAEL P. GRIFFIN, certify that under my direction and supervision this map was drawn from an actual field survey; that the error of closure of the survey as calculated by coordinates is 1: 10,000+; that the area shown hereon was calculated by coordinates.
 Witness my hand and seal this day of MONTH 2020.

ANDERSON CREEK PARTNERS, LP
 PIN 0505-86-8897
 DB 1346 PG 98

MAP 2019 PG 311
 HARNETT CO. REGISTRY
 N



FALLS CREEK DRIVE
 PRIVATE & UTILITY 50' RW

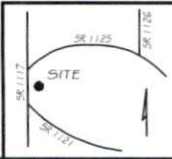
SETBACKS

FRONT	35'
REAR	25'
SIDE	5'
OTHER SIDE	10'
CORNER SIDE	20'

PRELIMINARY
 NOT FOR RECORDATION,
 SALES OR CONVEYANCE

LEGEND

EIP	EXISTING IRON PIPE	FES	FLARED END SECTION
IPS	IRON PIPE SET	WM	WATER METER
RAW	RIGHT OF WAY	CO	CLEAN OUT
N/F	NOW OR FORMERLY	FH	FIRE HYDRANT
EIS	EXISTING IRON STAKE	CB	CATCH BASIN



GRiffin LAND SURVEYING, INC.
 P.O. BOX 148
 FUQUAY-VARINA, NC 27526
 (919) - 567 - 1963

PLOT PLAN
 FOR
H & H HOMES
 ANDERSON CREEK CLUB
 LOT 103
 FALLS CREEK DRIVE
 NORTH CAROLINA
 HARNETT COUNTY ANDERSON CREEK TOWNSHIP

DRAWN BY NMF	DATE 8/26/20
CHECKED BY MPG	SCALE 1" = 20'